



Chronic Conditions Quick Facts 2011-2014

Louisiana Behavior Risk Factor Surveillance System

The Behavioral Risk Factor Surveillance System (BRFSS) is the nation's premier system of health-related telephone surveys that collects state data about U.S. residents regarding their health-related risk behaviors, chronic health conditions, and use of preventive services. Visit the following CDC site for information on methodology and data access:

<http://www.cdc.gov/brfss/about/index.htm>

All data in the following tables are taken from the Louisiana Behavioral Risk Factor Surveillance System (BRFSS) for 2011, 2012, 2013 and 2014. Because the BRFSS survey results are derived from a weighted sample of the population, the accuracy and precision of the estimates is dependent on sample size and sample bias. Where the sample size was too small to provide a valid estimate, NA (not available) was entered.

For further information, contact:

Laurie Freyder, MPH

Louisiana BRFSS Coordinator

Laurie.Freyder@la.gov

504.568.8191

All plots contributed by Jay Besse, Chief Data Officer, Bureau of Health Informatics

NINE ADMINISTRATIVE REGIONS OF LOUISIANA

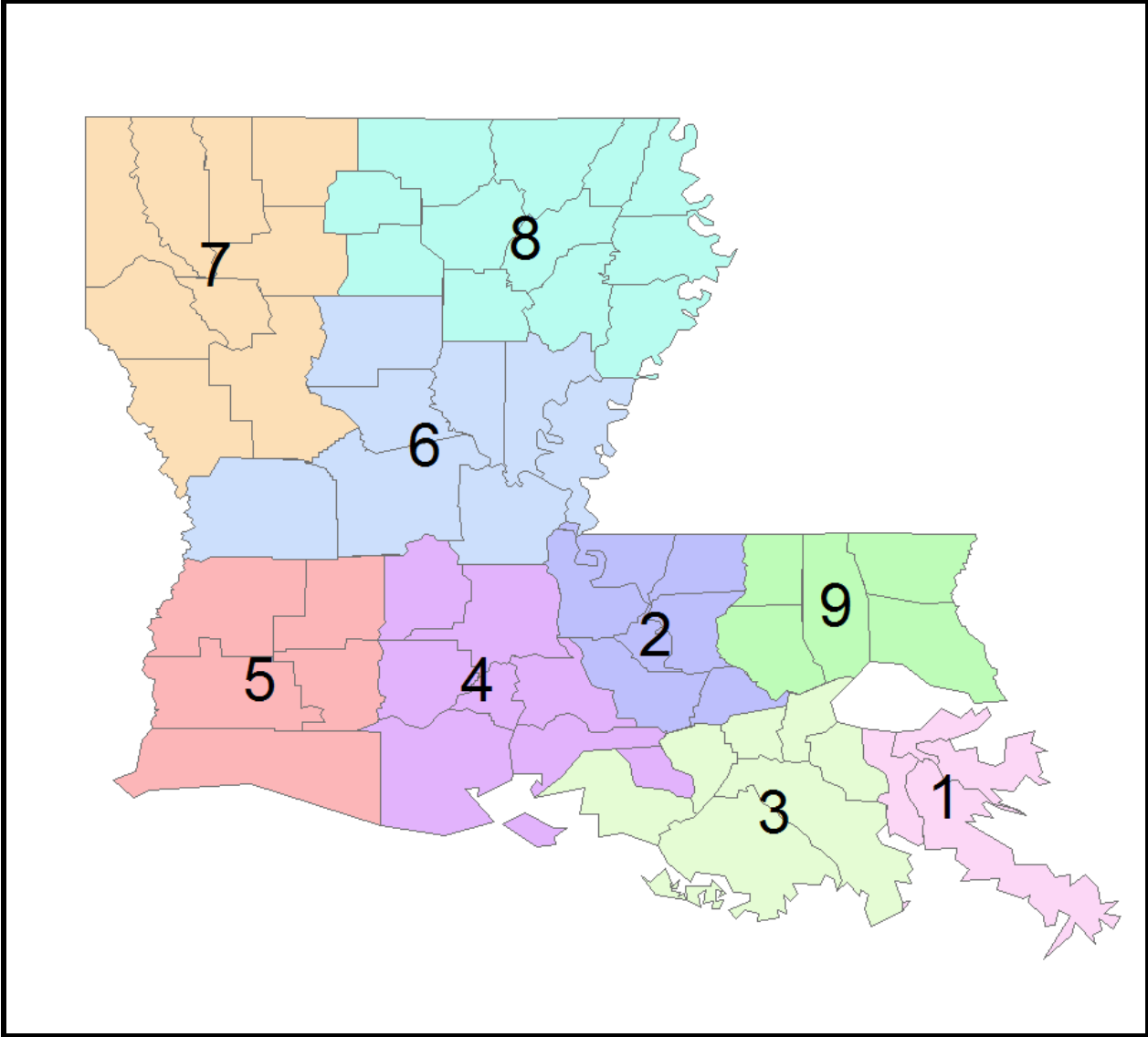


TABLE OF CONTENTS

CONDITIONS AND RISK FACTORS	PAGE
DIABETES	1
HYPERTENSION	2
CHOLESTEROL CHECK (LAST 5 YEARS)	3
HIGH CHOLESTEROL	4
CURRENT SMOKER: SMOKES CIGARETTES EVERY DAY	5
CURRENT SMOKER: SMOKES CIGARETTES EVERY DAY OR SOME DAYS	6
EX SMOKERS	7
NEVER SMOKERS	8
BMI 25.0-29.9: OVERWEIGHT	9
BMI 30.0 AND ABOVE: OBESE	10
MYOCARDIAL INFARCTION	11
CORONARY HEART DISEASE	12
STROKE	13
EVER ASTHMA	14
SKIN CANCER	15
CANCER (EXCLUDING SKIN CANCER)	16
COPD	17
ANY TYPE ARTHRITIC CONDITION	18
DEPRESSIVE DISORDER	19
KIDNEY DISEASE	20
2011 CONDITIONS AND RISK FACTORS BY REGION	21
2012 CONDITIONS AND RISK FACTORS BY REGION	21
2013 CONDITIONS AND RISK FACTORS BY REGION	22
2014 CONDITIONS AND RISK FACTORS BY REGION	22

DIABETES

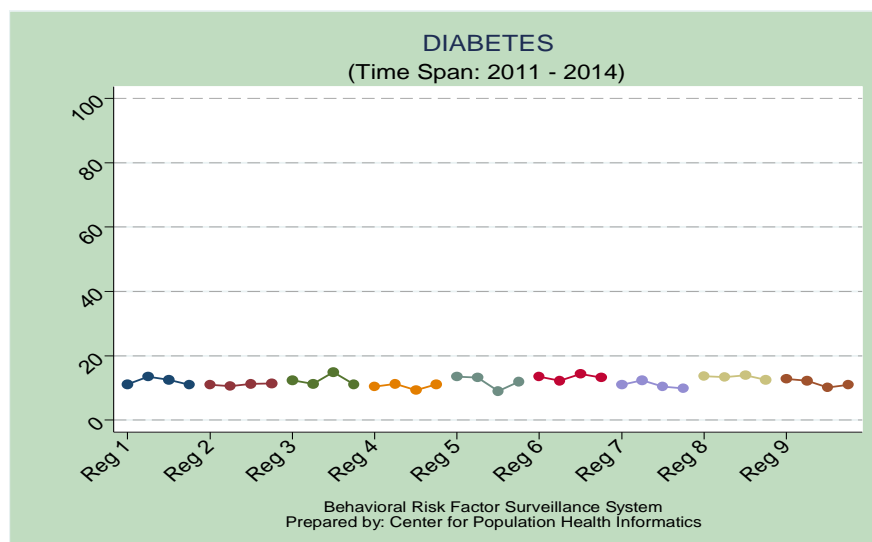
SEX	% DIABETES			
	2011	2012	2013	2014
MALE	12.2	11.8	10.4	11.6
FEMALE	11.5	12.7	12.8	11.0

INCOME	% DIABETES			
	2011	2012	2013	2014
LESS THAN \$15,000	14.8	19.2	17.3	16.8
\$15,000 TO < \$25,000	14.9	16.1	13.6	14.2
\$25,000 TO < \$35,000	13.5	14.7	13.2	14.0
\$35,000 TO < \$50,000	11.5	11.9	9.1	11.3
\$50,000 OR MORE	8.0	7.1	7.5	7.7

RACE	% DIABETES			
	2011	2012	2013	2014
WHITE	10.2	11.2	10.9	9.9
BLACK	15.8	14.7	15.0	15.0
HISPANIC	10.0	8.6	NA	8.8
OTHER	10.8	9.4	NA	7.5
MULTIRACIAL	4.3	12.2	NA	NA

AGE	% DIABETES			
	2011	2012	2013	2014
18-24	1.8	1.6	2.6	NA
25-34	3.9	2.1	1.1	2.3
35-44	9.4	7.9	6.2	5.7
45-54	11.6	14.0	11.7	9.7
55-64	19.8	21.7	20.7	21.4
65 AND OLDER	24.2	24.6	25.2	25.4

EDUCATION	% DIABETES			
	2011	2012	2013	2014
LESS THAN H.S.	14.9	19.2	20.2	15.1
GRADUATED H.S.	13.2	12.0	11.2	11.7
SOME COLLEGE	11.0	10.5	9.4	10.3
GRADUATED COLLEGE	7.2	8.6	7.5	8.6



HYPERTENSION

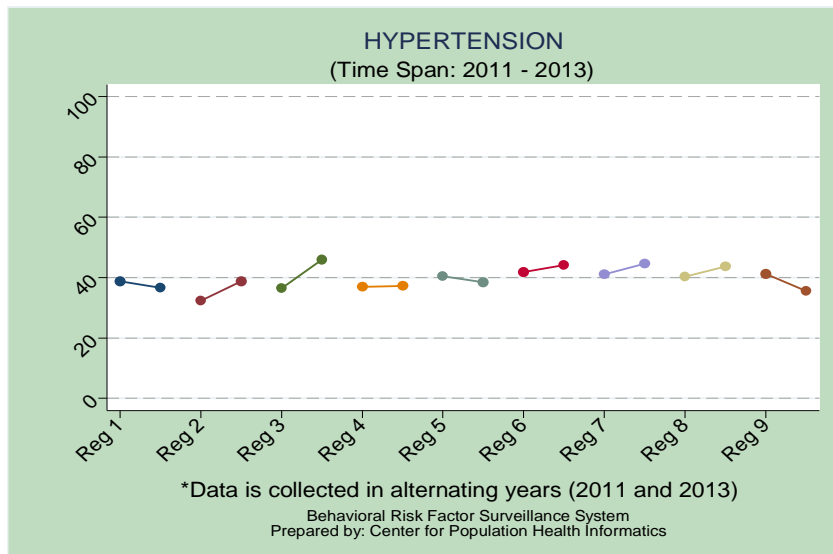
SEX	% HYPERTENSION			
	2011	2012	2013	2014
MALE	38.4	NA	39.4	NA
FEMALE	38.3	NA	40.3	NA

INCOME CATEGORY	% HYPERTENSION			
	2011	2012	2013	2014
LESS THAN \$15,000	47.0	NA	48.3	NA
\$15,000 TO < \$25,000	43.8	NA	46.4	NA
\$25,000 TO < \$35,000	37.2	NA	43.4	NA
\$35,000 TO < \$50,000	40.8	NA	39.0	NA
\$50,000 OR MORE	31.6	NA	31.2	NA

RACE CATEGORY	% HYPERTENSION			
	2011	2012	2013	2014
WHITE	36.5	NA	38.9	NA
BLACK	44.0	NA	46.2	NA
HISPANIC	31.7	NA	20.1	NA
OTHER	29.3	NA	28.0	NA
MULTIRACIAL	30.7	NA	NA	NA

AGE CATEGORY	% HYPERTENSION			
	2011	2012	2013	2014
18-24	8.3	NA	9.0	NA
25-34	17.7	NA	17.1	NA
35-44	30.5	NA	31.2	NA
45-54	43.2	NA	44.9	NA
55-64	60.2	NA	60.2	NA
65 AND OLDER	67.8	NA	70.4	NA

EDUCATION CATEGORY	% HYPERTENSION			
	2011	2012	2013	2014
LESS THAN H.S.	47.1	NA	48.8	NA
GRADUATED H.S.	40.7	NA	44.1	NA
SOME COLLEGE	36.0	NA	36.2	NA
GRADUATED COLLEGE	28.5	NA	29.2	NA



CHECK CHOLESTEROL (LAST 5 YEARS)

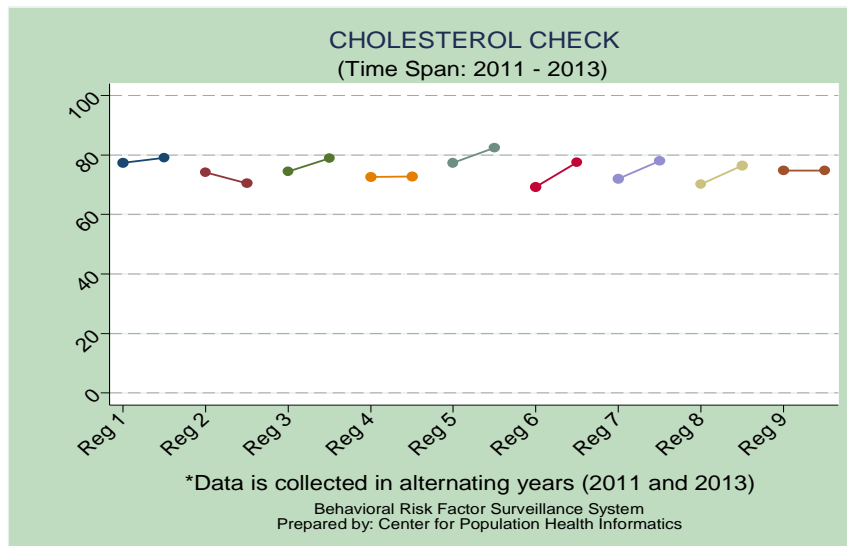
SEX	% CHOLESTEROL CHECK <= 5 YEARS			
	2011	2012	2013	2014
MALE	71.8	NA	74.1	NA
FEMALE	76.1	NA	78.0	NA

INCOME CATEGORY	% CHOLESTEROL CHECK <= 5 YEARS			
	2011	2012	2013	2014
LESS THAN \$15,000	64.6	NA	70.0	NA
\$15,000 TO < \$25,000	67.7	NA	65.1	NA
\$25,000 TO < \$35,000	71.0	NA	72.1	NA
\$35,000 TO < \$50,000	80.7	NA	82.9	NA
\$50,000 OR MORE	83.3	NA	85.0	NA

RACE CATEGORY	% CHOLESTEROL CHECK <= 5 YEARS			
	2011	2012	2013	2014
WHITE	77.7	NA	80.0	NA
BLACK	66.9	NA	72.5	NA
HISPANIC	72.0	NA	60.1	NA
OTHER	68.5	NA	64.6	NA
MULTIRACIAL	71.7	NA	NA	NA

AGE CATEGORY	% CHOLESTEROL CHECK <= 5 YEARS			
	2011	2012	2013	2014
18-24	32.6	NA	40.7	NA
25-34	57.1	NA	53.7	NA
35-44	76.8	NA	79.7	NA
45-54	82.8	NA	85.7	NA
55-64	90.9	NA	92.6	NA
65 AND OLDER	95.5	NA	95.6	NA

EDUCATION CATEGORY	% CHOLESTEROL CHECK <= 5 YEARS			
	2011	2012	2013	2014
LESS THAN H.S.	63.8	NA	68.9	NA
GRADUATED H.S.	71.3	NA	75.1	NA
SOME COLLEGE	77.5	NA	76.5	NA
GRADUATED COLLEGE	84.4	NA	84.3	NA



HIGH CHOLESTEROL

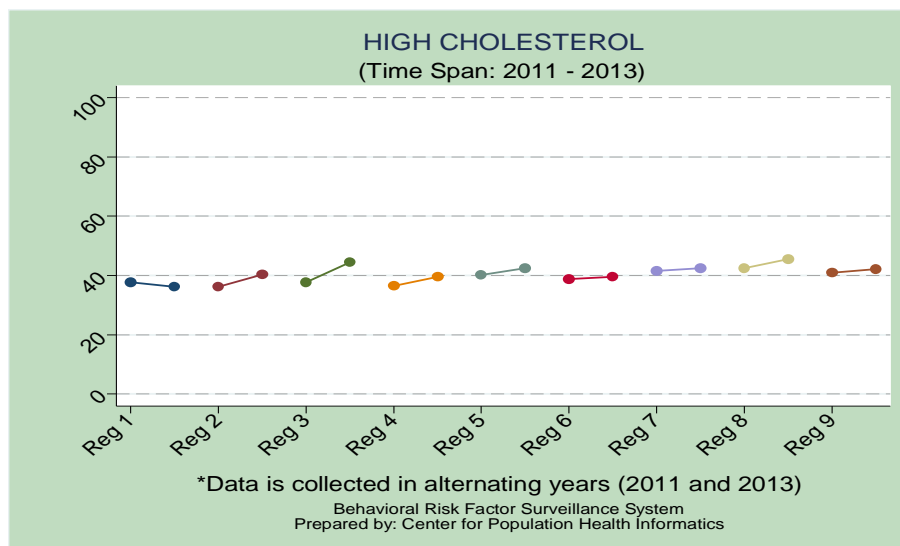
SEX	% HIGH CHOLESTEROL			
	2011	2012	2013	2014
MALE	40.1	NA	40.1	NA
FEMALE	37.5	NA	41.2	NA

RACE CATEGORY	% HIGH CHOLESTEROL			
	2011	2012	2013	2014
WHITE	40.6	NA	41.2	NA
BLACK	34.2	NA	40.2	NA
HISPANIC	43.9	NA	36.8	NA
OTHER	27.4	NA	38.2	NA
MULTIRACIAL	39.9	NA	NA	NA

EDUCATION CATEGORY	% HIGH CHOLESTEROL			
	2011	2012	2013	2014
LESS THAN H.S.	48.4	NA	49.4	NA
GRADUATED H.S.	40.0	NA	45.1	NA
SOME COLLEGE	37.2	NA	35.1	NA
GRADUATED COLLEGE	31.6	NA	34.0	NA

INCOME CATEGORY	% HIGH CHOLESTEROL			
	2011	2012	2013	2014
LESS THAN \$15,000	42.9	NA	49.5	NA
\$15,000 TO < \$25,000	45.6	NA	47.1	NA
\$25,000 TO < \$35,000	40.7	NA	42.2	NA
\$35,000 TO < \$50,000	34.5	NA	39.5	NA
\$50,000 OR MORE	34.4	NA	33.6	NA

AGE CATEGORY	% HIGH CHOLESTEROL			
	2011	2012	2013	2014
18-24	8.7	NA	9.9	NA
25-34	17.1	NA	16.4	NA
35-44	31.4	NA	34.4	NA
45-54	39.6	NA	40.9	NA
55-64	53.4	NA	53.1	NA
65 AND OLDER	53.7	NA	57.9	NA



SMOKES CIGARETTES EVERY DAY

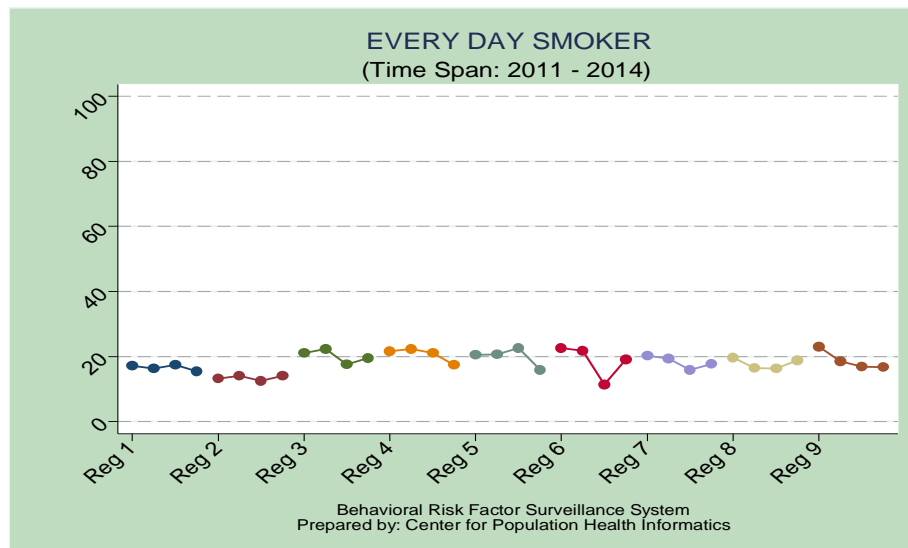
SEX	% EVERY DAY SMOKER			
	2011	2012	2013	2014
MALE	21.4	21.9	20.0	18.7
FEMALE	17.4	15.3	13.6	15.0

INCOME CATEGORY	% EVERY DAY SMOKER			
	2011	2012	2013	2014
LESS THAN \$15,000	27.0	20.9	23.3	27.7
\$15,000 TO < \$25,000	23.4	25.2	16.8	19.2
\$25,000 TO < \$35,000	19.6	22.0	18.5	15.4
\$35,000 TO < \$50,000	18.8	19.2	21.5	18.8
\$50,000 OR MORE	14.5	13.8	12.0	11.6

RACE CATEGORY	% EVERY DAY SMOKER			
	2011	2012	2013	2014
WHITE	20.4	19.8	18.7	18.0
BLACK	17.7	16.5	13.4	15.8
HISPANIC	12.2	20.6	5.7	NA
OTHER	22.2	16.2	17.0	15.1
MULTIRACIAL	26.1	9.8	NA	NA

AGE CATEGORY	% EVERY DAY SMOKER			
	2011	2012	2013	2014
18-24	15.8	12.9	17.1	10.6
25-34	25.2	24.4	20.1	20.3
35-44	23.1	24.8	18.2	22.8
45-54	23.7	21.0	22.7	20.9
55-64	16.8	17.6	13.9	16.7
65 AND OLDER	9.5	9.2	8.1	8.6

EDUCATION CATEGORY	% EVERY DAY SMOKER			
	2011	2012	2013	2014
LESS THAN H.S.	30.2	28.4	27.3	31.4
GRADUATED H.S.	21.6	20.5	17.0	17.7
SOME COLLEGE	16.2	17.1	16.1	13.5
GRADUATED COLLEGE	8.6	7.4	7.1	7.1



CURRENT SMOKER (INCLUDES SMOKES EVERY DAY AND SOME DAYS)

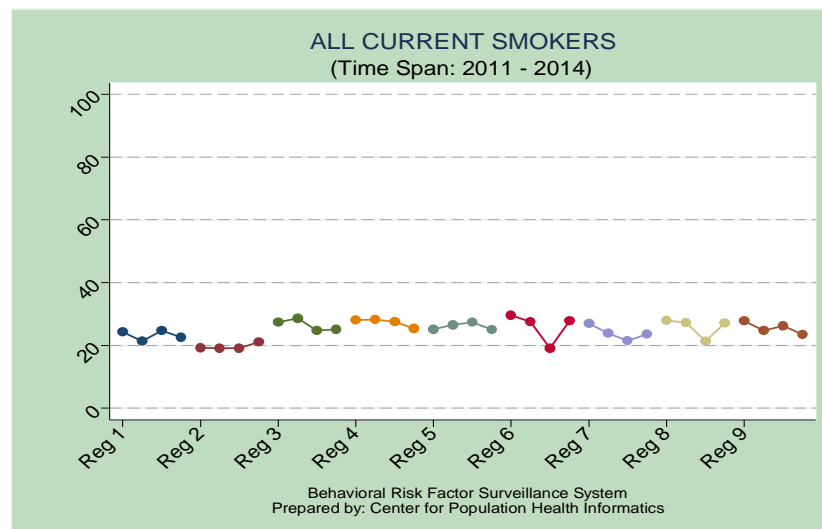
SEX	% CURRENT SMOKERS			
	2011	2012	2013	2014
MALE	29.5	28.6	27.3	27.6
FEMALE	22.3	21.1	20.0	20.7

INCOME CATEGORY	% CURRENT SMOKERS			
	2011	2012	2013	2014
LESS THAN \$15,000	34.8	32.7	35.8	37.3
\$15,000 TO < \$25,000	31.2	32.1	27.6	28.8
\$25,000 TO < \$35,000	25.1	26.7	20.5	25.6
\$35,000 TO < \$50,000	24.0	23.9	26.2	25.1
\$50,000 OR MORE	19.8	18.0	17.2	16.7

RACE CATEGORY	% CURRENT SMOKERS			
	2011	2012	2013	2014
WHITE	26.1	25.6	24.9	23.9
BLACK	25.4	23.0	20.6	24.7
HISPANIC	18.2	29.6	21.4	NA
OTHER	30.3	22.7	21.2	27.7
MULTI-RACIAL	36.7	27.5	NA	NA

AGE CATEGORY	% CURRENT SMOKERS			
	2011	2012	2013	2014
18-24	22.8	21.2	22.5	17.5
25-34	36.3	32.4	32.9	32.3
35-44	29.5	30.6	24.0	29.7
45-54	29.3	27.6	29.4	28.2
55-64	22.2	23.8	20.2	23.8
65 AND OLDER	12.1	12.0	11.5	11.6

EDUCATION CATEGORY	% CURRENT SMOKERS			
	2011	2012	2013	2014
LESS THAN H.S.	37.9	37.4	37.0	42.0
GRADUATED H.S.	28.9	25.9	25.0	24.8
SOME COLLEGE	22.4	23.6	21.8	20.8
GRADUATED COLLEGE	12.3	12.0	10.7	11.5



EX SMOKERS

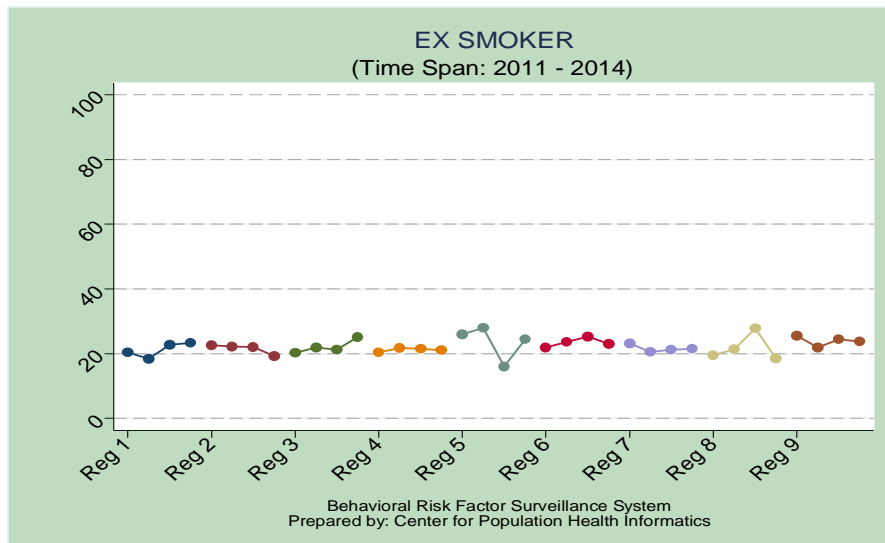
SEX	% EX SMOKER			
	2011	2012	2013	2014
MALE	25.3	25.5	27.1	25.7
FEMALE	19.0	18.5	18.4	18.8

INCOME CATEGORY	% EX SMOKER			
	2011	2012	2013	2014
LESS THAN \$15,000	17.8	18.2	20.3	17.6
\$15,000 TO < \$25,000	21.2	17.9	24.9	21.9
\$25,000 TO < \$35,000	26.2	25.2	22.9	21.6
\$35,000 TO < \$50,000	22.7	23.2	21.1	24.8
\$50,000 OR MORE	24.2	25.0	22.2	24.7

RACE CATEGORY	% EX SMOKER			
	2011	2012	2013	2014
WHITE	26.2	26.4	25.2	25.9
BLACK	13.6	13.9	15.3	14.3
HISPANIC	25.6	12.1	32.3	22.4
OTHER	12.3	15.7	24.5	19.5
MULTIRACIAL	17.5	39.2	NA	28.0

AGE CATEGORY	% EX SMOKER			
	2011	2012	2013	2014
18-24	7.3	5.6	6.4	7.6
25-34	15.4	14.4	18.5	15.3
35-44	16.4	15.9	20.4	17.7
45-54	21.6	22.6	18.6	19.4
55-64	29.5	29.3	31.6	27.9
65 AND OLDER	40.3	40.4	36.6	40.4

EDUCATION CATEGORY	% X SMOKER			
	2011	2012	2013	2014
LESS THAN H.S.	20.9	23.8	22.7	20.0
GRADUATED H.S.	21.2	21.2	23.6	22.5
SOME COLLEGE	22.2	21.8	22.4	23.5
GRADUATED COLLEGE	24.4	21.4	21.1	21.5



NEVER SMOKERS

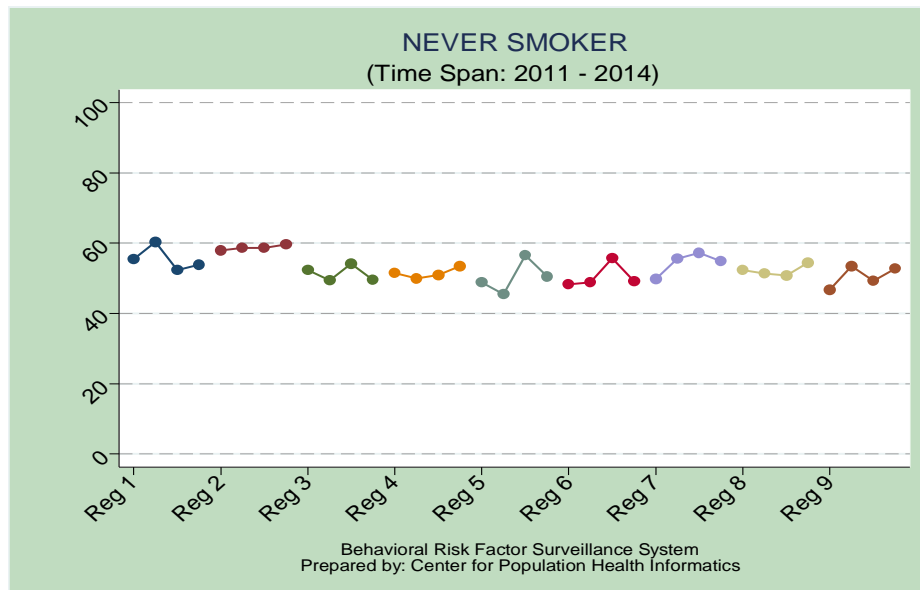
SEX	% NEVER SMOKER			
	2011	2012	2013	2014
MALE	45.2	45.8	45.6	46.6
FEMALE	58.7	60.4	61.5	60.5

INCOME CATEGORY	% NEVER SMOKER			
	2011	2012	2013	2014
LESS THAN \$15,000	47.4	49.0	43.8	45.1
\$15,000 TO < \$25,000	47.6	50.0	47.4	49.3
\$25,000 TO < \$35,000	48.7	48.1	56.6	52.8
\$35,000 TO < \$50,000	53.3	52.9	52.7	50.1
\$50,000 OR MORE	56.0	57.1	60.6	58.6

RACE CATEGORY	% NEVER SMOKER			
	2011	2012	2013	2014
WHITE	47.7	48.0	49.8	50.3
BLACK	61.1	63.1	64.1	61.0
HISPANIC	56.2	58.3	46.3	57.8
OTHER	57.4	61.7	54.2	52.8
MULTIRACIAL	45.8	33.3	NA	49.3

AGE CATEGORY	% NEVER SMOKER			
	2011	2012	2013	2014
18-24	69.9	73.1	71.1	75.0
25-34	48.3	53.1	48.7	52.4
35-44	54.1	53.5	55.6	52.6
45-54	49.0	49.8	52.0	52.3
55-64	48.3	46.9	48.2	48.2
65 AND OLDER	47.6	47.6	51.9	48.0

EDUCATION CATEGORY	% NEVER SMOKER			
	2011	2012	2013	2014
LESS THAN H.S.	41.1	38.8	40.3	38.0
GRADUATED H.S.	49.9	52.9	51.4	52.7
SOME COLLEGE	55.4	54.5	55.8	55.7
GRADUATED COLLEGE	63.3	66.6	68.2	67.0



BMI 25.0-29.9: OVERWEIGHT

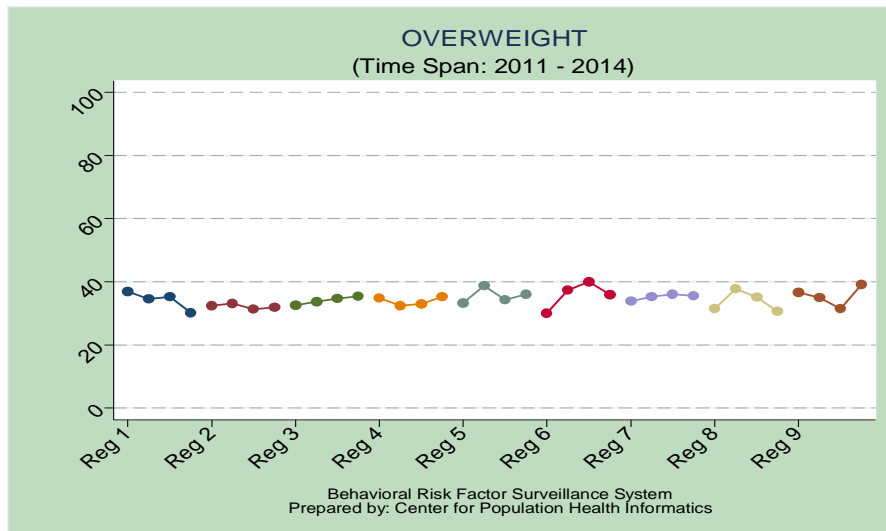
SEX	% BMI CATEGORY: OVERWEIGHT			
	2011	2012	2013	2014
MALE	38.8	39.4	41.3	39.2
FEMALE	29.6	30.4	27.4	28.8

INCOME	% BMI CATEGORY: OVERWEIGHT			
	2011	2012	2013	2014
LESS THAN \$15,000	28.4	30.1	26.2	29.7
\$15,000 TO < \$25,000	32.8	31.3	29.9	33.6
\$25,000 TO < \$35,000	37.1	38.7	37.6	34.1
\$35,000 TO < \$50,000	35.8	35.8	33.9	34.9
\$50,000 OR MORE	37.0	38.0	39.8	36.7

RACE	% BMI CATEGORY: OVERWEIGHT			
	2011	2012	2013	2014
WHITE	33.6	35.9	35.4	35.9
BLACK	34.9	33.2	32.7	30.9
HISPANIC	34.7	36.8	29.7	32.8
OTHER	32.6	28.9	31.6	30.8
MULTIRACIAL	50.5	28.9	NA	32.9

AGE	% BMI CATEGORY: OVERWEIGHT			
	2011	2012	2013	2014
18-24	24.8	30.2	24.7	26.5
25-34	33.9	33.0	34.1	30.7
35-44	36.0	34.0	36.0	31.8
45-54	33.5	34.4	35.5	37.2
55-64	35.9	39.5	36.2	35.0
65 AND OLDER	39.3	39.2	37.1	40.7

EDUCATION	%BMI CATEGORY: OVERWEIGHT			
	2011	2012	2013	2014
LESS THAN H.S.	32.1	32.9	27.8	32.1
GRADUATED H.S.	34.3	37.0	34.8	34.1
SOME COLLEGE	33.5	31.8	35.0	35.1
GRADUATED COLLEGE	36.9	37.3	38.3	34.0



BMI 30.0 AND ABOVE: OBESE

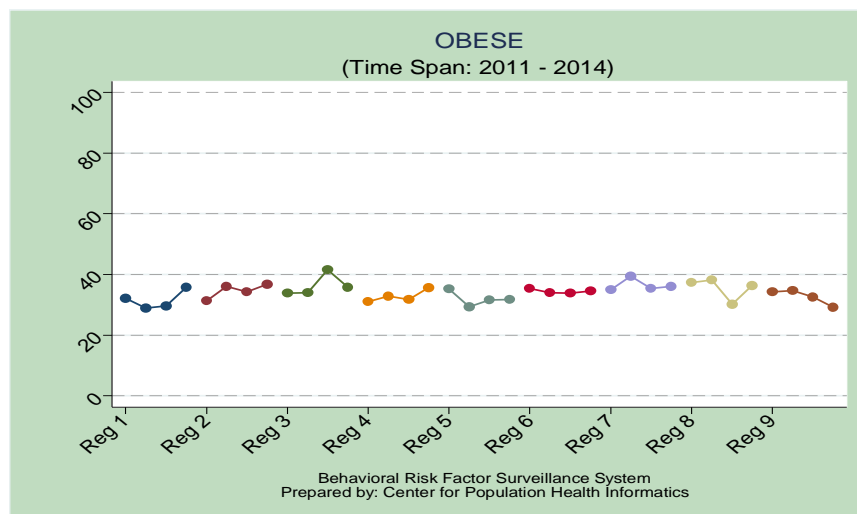
SEX	% BMI CATEGORY: OBESE			
	2011	2012	2013	2014
MALE	33.0	33.5	31.1	34.1
FEMALE	33.8	35.9	35.0	35.7

INCOME	% BMI CATEGORY: OBESE			
	2011	2012	2013	2014
LESS THAN \$15,000	35.4	44.5	40.3	40.0
\$15,000 TO < \$25,000	36.7	38.2	36.7	36.1
\$25,000 TO < \$35,000	36.8	32.0	28.2	38.8
\$35,000 TO < \$50,000	36.3	37.1	38.4	37.8
\$50,000 OR MORE	32.4	32.4	30.0	33.4

RACE	% BMI CATEGORY: OBESE			
	2011	2012	2013	2014
WHITE	31.0	30.0	30.2	31.3
BLACK	39.4	45.4	40.7	43.3
HISPANIC	37.4	35.1	27.3	32.9
OTHER	22.9	19.9	27.6	21.0
MULTIRACIAL	23.0	30.9	NA	44.3

AGE	% BMI CATEGORY: OBESE			
	2011	2012	2013	2014
18-24	17.0	19.6	17.7	19.2
25-34	32.7	34.6	27.5	35.5
35-44	38.5	41.0	40.4	40.7
45-54	39.7	40.3	40.5	38.5
55-64	41.0	39.5	37.8	40.3
65 AND OLDER	28.7	30.4	32.2	32.0

EDUCATION	% BMI CATEGORY: OBESE			
	2011	2012	2013	2014
LESS THAN H.S.	36.3	38.6	38.8	36.2
GRADUATED H.S.	33.6	34.0	34.7	37.1
SOME COLLEGE	35.8	37.5	32.5	34.4
GRADUATED COLLEGE	26.6	28.3	25.8	30.9



MYOCARDIAL INFARCTION

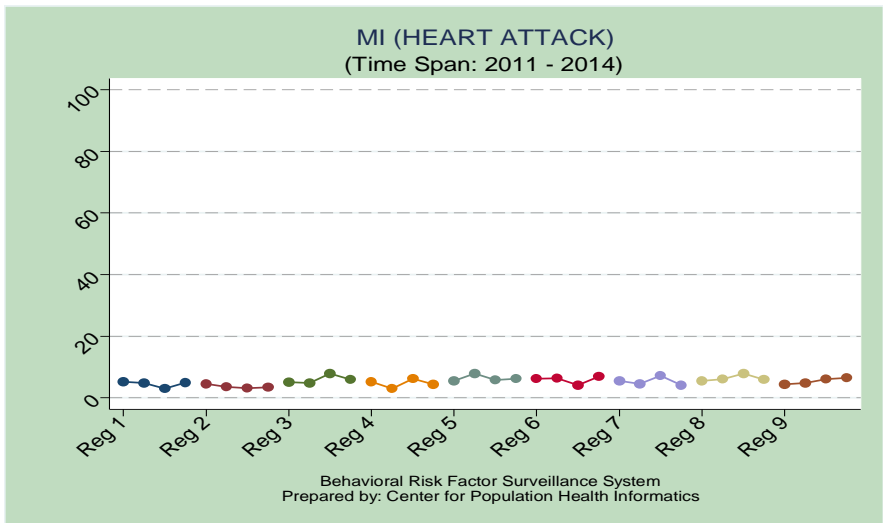
SEX	% MYOCARDIAL INFARCTION			
	2011	2012	2013	2014
MALE	6.1	5.5	7.1	6.2
FEMALE	4.3	4.2	3.7	4.1

INCOME	%MYOCARDIAL INFARCTION			
	2011	2012	2013	2014
LESS THAN \$15,000	6.7	7.0	7.3	9.4
\$15,000 TO < \$25,000	8.0	6.8	8.3	6.6
\$25,000 TO < \$35,000	5.2	4.5	4.4	5.4
\$35,000 TO < \$50,000	4.9	4.7	4.9	4.7
\$50,000 OR MORE	2.7	2.9	3.3	3.3

RACE	%MYOCARDIAL INFARCTION			
	2011	2012	2013	2014
WHITE	5.4	5.5	5.7	5.6
BLACK	4.3	3.6	5.6	4.6
HISPANIC	6.3	2.8	1.2	NA
OTHER	5.5	4.4	3.4	NA
MULTIRACIAL	8.2	3.0	NA	NA

AGE	% MYOCARDIAL INFARCTION			
	2011	2012	2013	2014
18-24	0.7	0.1	0.1	NA
25-34	0.6	0.4	1.2	NA
35-44	1.9	2.3	3.4	2.5
45-54	4.3	3.9	4.4	4.7
55-64	8.9	8.5	6.5	8.5
65 AND OLDER	14.4	13.1	15.2	12.9

EDUCATION	%MYOCARDIAL INFARCTION			
	2011	2012	2013	2014
LESS THAN H.S.	7.8	7.3	9.7	8.3
GRADUATED H.S.	5.1	5.7	5.7	5.7
SOME COLLEGE	4.8	3.5	4.1	4.2
GRADUATED COLLEGE	3.0	2.9	2.3	2.7



CORONARY HEART DISEASE (ANGINA)

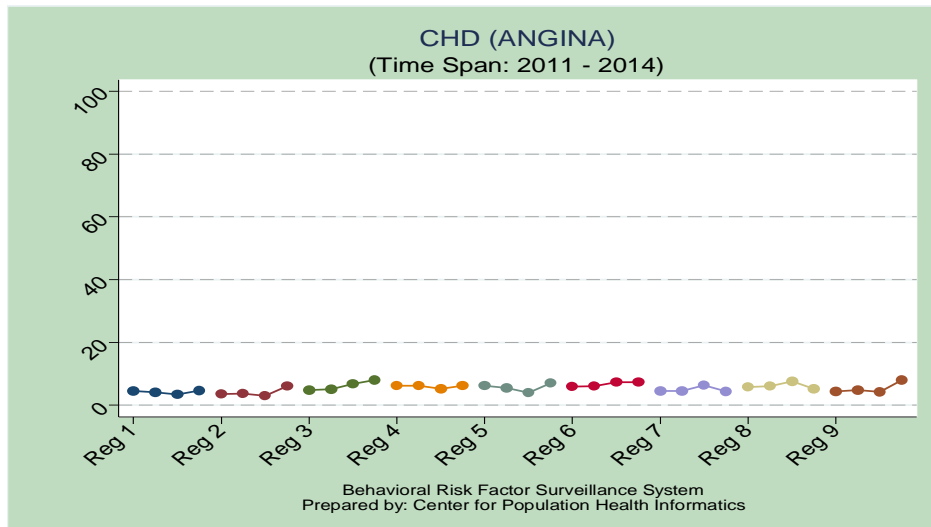
SEX	% CORONARY HEART DISEASE (ANGINA)			
	2011	2012	2013	2014
MALE	5.3	5.2	5.0	6.4
FEMALE	4.6	4.6	4.9	5.9

INCOME	%CORONARY HEART DISEASE (ANGINA)			
	2011	2012	2013	2014
LESS THAN \$15,000	6.2	7.7	6.1	7.7
\$15,000 TO < \$25,000	7.2	6.4	7.3	8.0
\$25,000 TO < \$35,000	5.9	6.3	6.2	7.3
\$35,000 TO < \$50,000	4.4	5.1	4.5	5.7
\$50,000 OR MORE	3.0	2.7	2.8	5.1

RACE	%CORONARY HEART DISEASE (ANGINA)			
	2011	2012	2013	2014
WHITE	5.5	5.3	5.6	7.1
BLACK	3.6	4.5	4.3	4.7
HISPANIC	4.4	1.9	1.8	NA
OTHER	6.3	4.4	2.7	7.4
MULTIRACIAL	6.8	1.7	NA	NA

AGE	% CORONARY HEART DISEASE (ANGINA)			
	2011	2012	2013	2014
18-24	0.1	0.1	0.0	NA
25-34	0.5	0.3	0.1	NA
35-44	1.8	2.4	3.3	NA
45-54	4.6	3.0	4.5	4.7
55-64	9.8	8.4	6.3	10.3
>= 65	12.8	14.6	14.5	16.8

EDUCATION	%CORONARY HEART DISEASE (ANGINA)			
	2011	2012	2013	2014
LESS THAN H.S.	6.2	6.7	6.5	7.9
GRADUATED H.S.	5.2	4.6	5.6	6.3
SOME COLLEGE	4.5	4.6	4.2	5.5
GRADUATED COLLEGE	3.7	4.2	3.4	5.2



STROKE

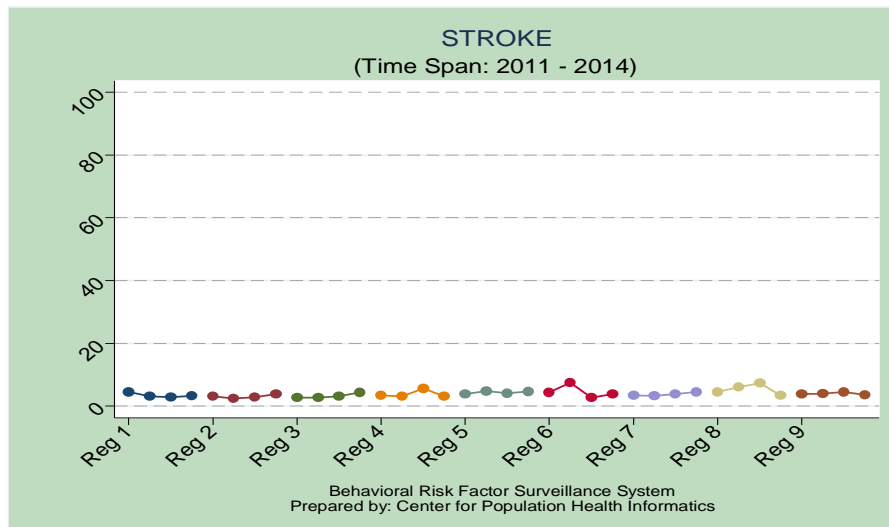
SEX	% STROKE			
	2011	2012	2013	2014
MALE	3.3	3.9	4.5	3.0
FEMALE	4.2	4.1	3.5	4.5

INCOME	% STROKE			
	2011	2012	2013	2014
LESS THAN \$15,000	6.9	7.3	7.3	7.5
\$15,000 TO < \$25,000	6.2	5.5	4.6	5.1
\$25,000 TO < \$35,000	4.1	3.1	7.2	3.8
\$35,000 TO < \$50,000	2.7	4.0	2.3	2.1
\$50,000 OR MORE	1.2	1.6	1.7	2.0

RACE	% STROKE			
	2011	2012	2013	2014
WHITE	3.5	3.9	4.3	3.1
BLACK	4.7	4.3	4.0	5.2
HISPANIC	2.8	2.3	0.1	NA
OTHER	3.2	4.2	2.9	NA
MULTIRACIAL	0.5	5.4	NA	NA

AGE	% STROKE			
	2011	2012	2013	2014
18-24	0.2	0.04	0.2	NA
25-34	0.6	0.4	1.4	NA
35-44	1.9	3.2	3.1	NA
45-54	3.1	3.3	4.3	4.5
55-64	7.3	7.4	5.1	4.7
65 AND OLDER	9.5	9.0	8.9	9.9

EDUCATION	% STROKE			
	2011	2012	2013	2014
LESS THAN H.S.	6.4	8.3	8.3	6.8
GRADUATED H.S.	3.5	3.6	3.6	4.0
SOME COLLEGE	3.8	3.0	3.0	3.1
GRADUATED COLLEGE	1.4	1.9	2.0	1.7



ASTHMA

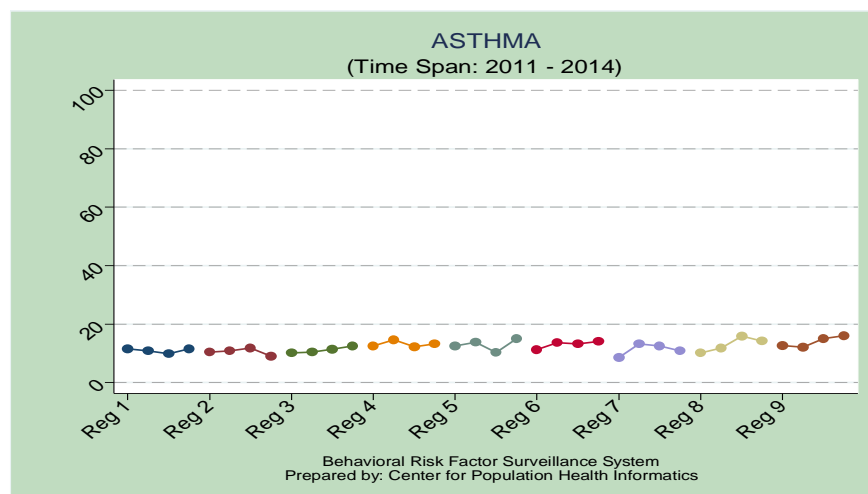
SEX	% ASTHMA			
	2011	2012	2013	2014
MALE	10.0	11.3	10.4	11.2
FEMALE	12.1	12.9	14.1	13.7

RACE	% ASTHMA			
	2011	2012	2013	2014
WHITE	10.4	11.2	11.3	12.3
BLACK	12.5	13.8	14.8	14.4
HISPANIC	10.4	9.9	12.8	NA
OTHER	13.9	18.9	8.8	8.1
MULTIRACIAL	18.1	11.9	NA	20.9

EDUCATION	% ASTHMA			
	2011	2012	2013	2014
LESS THAN H.S.	14.3	15.8	13.1	19.0
GRADUATED H.S.	9.9	11.3	11.4	12.2
SOME COLLEGE	11.5	12.0	14.2	11.5
GRADUATED COLLEGE	9.5	10.2	10.4	8.6

INCOME	% ASTHMA			
	2011	2012	2013	2014
LESS THAN \$15,000	16.3	18.8	18.0	19.8
\$15,000 TO < \$25,000	14.1	13.9	12.4	14.6
\$25,000 TO < \$35,000	8.0	14.8	15.1	13.0
\$35,000 TO < \$50,000	10.1	10.5	10.3	11.3
\$50,000 OR MORE	8.2	8.2	9.4	8.9

AGE	% ASTHMA			
	2011	2012	2013	2014
18-24	13.8	16.0	17.3	15.3
25-34	10.6	12.0	14.8	12.8
35-44	11.9	11.8	10.6	12.7
45-54	10.7	10.3	11.2	11.2
55-64	11.5	14.5	10.7	12.3
65 AND OLDER	8.9	9.1	10.0	11.4



SKIN CANCER

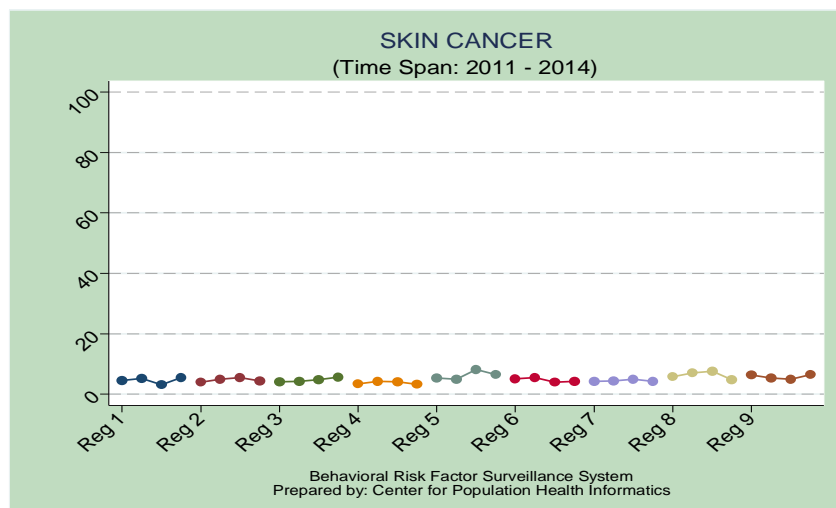
SEX	% SKIN CANCER			
	2011	2012	2013	2014
MALE	5.5	6.2	5.7	6.0
FEMALE	3.9	4.5	4.2	4.1

INCOME	% SKIN CANCER			
	2011	2012	2013	2014
LESS THAN \$15,000	3.3	3.6	2.7	3.5
\$15,000 TO < \$25,000	5.4	4.4	6.3	4.6
\$25,000 TO < \$35,000	6.0	7.9	5.8	6.2
\$35,000 TO < \$50,000	4.4	5.6	5.8	6.3
\$50,000 OR MORE	4.8	5.7	4.6	4.7

RACE	% SKIN CANCER			
	2011	2012	2013	2014
WHITE	6.9	8.1	7.4	7.7
BLACK	0.3	0.5	1.0	NA
HISPANIC	3.0	1.6	1.6	NA
OTHER	2.8	3.7	1.2	NA
MULTIRACIAL	1.4	5.0	NA	NA

AGE	% SKIN CANCER			
	2011	2012	2013	2014
18-24	0.2	1.1	0.0	NA
25-34	0.5	0.3	1.5	NA
35-44	1.1	1.7	0.8	NA
45-54	3.3	4.3	3.7	3.0
55-64	7.3	7.8	6.5	7.2
65 AND OLDER	15.6	16.1	15.8	16.2

EDUCATION	% SKIN CANCER			
	2011	2012	2013	2014
LESS THAN H.S.	4.3	4.8	5.4	3.6
GRADUATED H.S.	4.0	4.5	5.1	5.1
SOME COLLEGE	4.8	5.6	4.3	5.1
GRADUATED COLLEGE	6.2	7.2	5.3	6.0



CANCER (EXCLUDING SKIN CANCER)

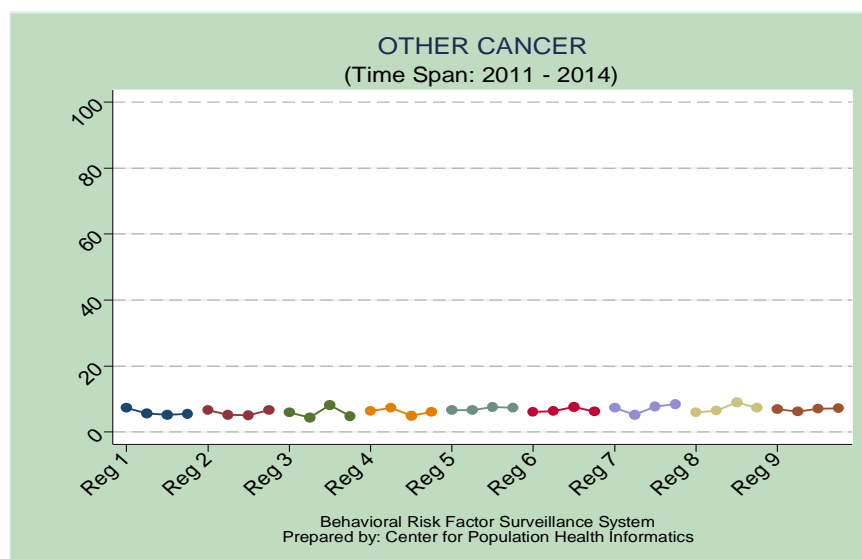
SEX	% CANCER (EXCLUDING SKIN CANCER)			
	2011	2012	2013	2014
MALE	5.8	4.7	5.3	5.3
FEMALE	7.6	7.5	7.8	7.7

RACE	% CANCER (EXCLUDING SKIN CANCER)			
	2011	2012	2013	2014
WHITE	7.9	7.5	7.9	7.6
BLACK	4.5	4.1	4.9	4.9
HISPANIC	6.3	0.8	1.1	NA
OTHER	3.9	7.0	5.0	NA
MULTIRACIAL	8.5	4.7	NA	NA

EDUCATION	% CANCER (EXCLUDING SKIN CANCER)			
	2011	2012	2013	2014
LESS THAN H.S.	6.9	7.8	6.7	6.6
GRADUATED H.S.	6.3	5.7	7.2	6.4
SOME COLLEGE	7.3	6.1	6.4	6.7
GRADUATED COLLEGE	6.7	5.6	5.9	6.2

INCOME	% CANCER (EXCLUDING SKIN CANCER)			
	2011	2012	2013	2014
LESS THAN \$15,000	8.0	8.4	6.9	7.1
\$15,000 TO < \$25,000	7.8	6.1	8.3	7.1
\$25,000 TO < \$35,000	6.1	7.1	5.2	6.7
\$35,000 TO < \$50,000	6.0	5.5	6.8	8.0
\$50,000 OR MORE	6.0	4.7	5.6	5.1

AGE	% CANCER (EXCLUDING SKIN CANCER)			
	2011	2012	2013	2014
18-24	1.2	1.7	0.0	NA
25-34	1.7	1.7	1.7	2.3
35-44	4.4	2.8	3.5	3.2
45-54	5.6	5.4	6.2	5.3
55-64	9.7	8.1	9.2	9.2
65 AND OLDER	17.7	16.4	17.3	15.9



COPD

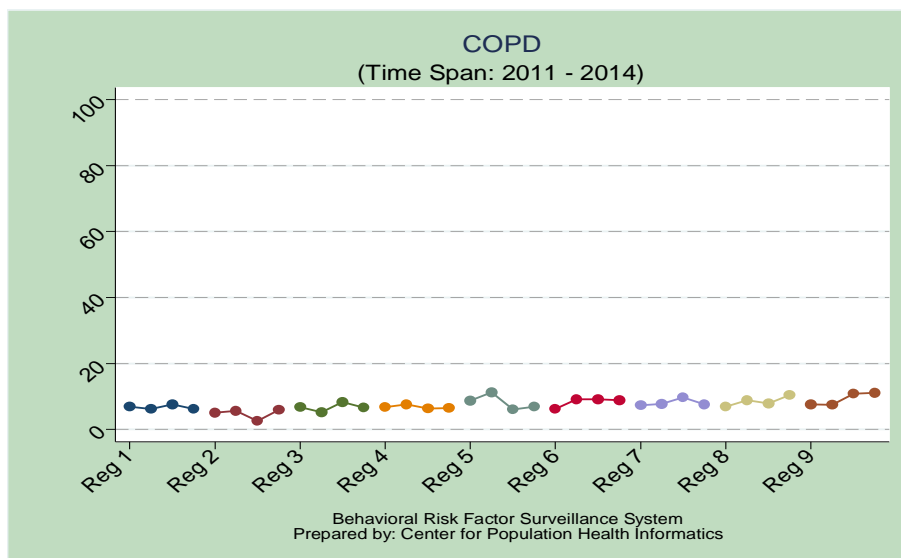
SEX	% COPD			
	2011	2012	2013	2014
MALE	6.0	6.8	7.0	5.8
FEMALE	7.6	8.1	8.0	9.2

RACE	% COPD			
	2011	2012	2013	2014
WHITE	7.5	8.2	8.1	8.4
BLACK	5.1	6.7	7.0	6.7
HISPANIC	3.6	5.7	1.6	NA
OTHER	11.0	4.3	9.1	5.6
MULTIRACIAL	10.8	4.3	NA	NA

EDUCATION	% COPD			
	2011	2012	2013	2014
LESS THAN H.S.	9.7	13.8	11.0	12.4
GRADUATED H.S.	7.5	7.6	7.4	7.6
SOME COLLEGE	6.3	6.2	7.4	7.3
GRADUATED COLLEGE	3.5	3.2	4.4	3.3

INCOME	% COPD			
	2011	2012	2013	2014
LESS THAN \$15,000	11.8	13.1	13.6	15.8
\$15,000 TO < \$25,000	10.4	12.6	8.8	10.7
\$25,000 TO < \$35,000	6.0	6.4	8.8	8.4
\$35,000 TO < \$50,000	5.3	5.8	5.6	5.5
\$50,000 OR MORE	3.5	3.4	4.0	3.6

AGE	% COPD			
	2011	2012	2013	2014
18-24	3.7	2.3	2.6	3.2
25-34	3.3	3.2	4.2	3.8
35-44	4.1	5.0	4.6	5.3
45-54	7.3	8.1	8.7	7.7
55-64	10.7	12.6	10.4	12.9
65 AND OLDER	11.8	13.0	13.1	11.5



ANY TYPE ARTHRITIC CONDITION

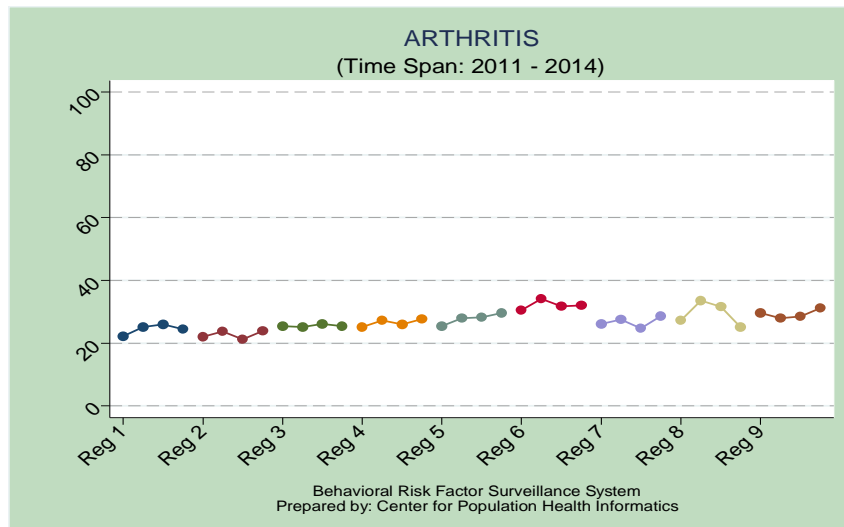
SEX	% ANY TYPE ARTHRITIC CONDITION			
	2011	2012	2013	2014
MALE	21.6	23.2	21.9	22.8
FEMALE	28.8	32.4	30.6	31.1

INCOME	% ANY TYPE ARTHRITIC CONDITION			
	2011	2012	2013	2014
LESS THAN \$15,000	32.8	40.2	34.5	38.1
\$15,000 TO < \$25,000	32.3	35.0	34.3	30.6
\$25,000 TO < \$35,000	27.2	30.5	29.4	30.2
\$35,000 TO < \$50,000	24.8	25.5	25.0	28.8
\$50,000 OR MORE	17.7	18.7	18.1	20.1

RACE	% ANY TYPE ARTHRITIC CONDITION			
	2011	2012	2013	2014
WHITE	26.5	29.7	28.5	28.9
BLACK	23.5	26.1	25.9	25.4
HISPANIC	18.8	18.5	11.6	12.7
OTHER	24.9	19.8	12.0	22.4
MULTIRACIAL	27.2	28.8	NA	30.8

AGE	% ANY TYPE ARTHRITIC CONDITION			
	2011	2012	2013	2014
18-24	4.7	4.2	4.4	5.1
25-34	5.6	7.7	10.4	9.2
35-44	17.8	16.6	14.5	16.5
45-54	27.1	31.3	28.2	27.6
55-64	42.0	48.1	42.0	44.9
65 AND OLDER	54.0	56.1	53.9	53.7

EDUCATION	% ANY TYPE ARTHRITIC CONDITION			
	2011	2012	2013	2014
LESS THAN H.S.	33.7	40.3	37.4	34.2
GRADUATED H.S.	25.4	27.5	26.4	27.8
SOME COLLEGE	23.8	25.8	24.6	25.6
GRADUATED COLLEGE	18.7	20.1	18.7	22.0



DEPRESSIVE DISORDER

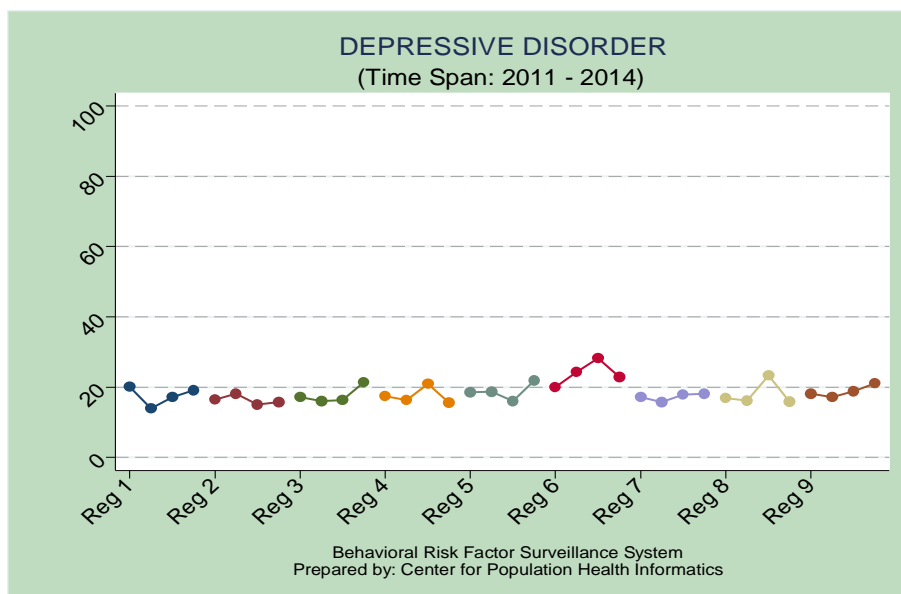
SEX	% DEPRESSIVE DISORDER			
	2011	2012	2013	2014
MALE	14.2	12.7	15.0	14.0
FEMALE	21.6	21.4	22.1	23.1

INCOME	% DEPRESSIVE DISORDER			
	2011	2012	2013	2014
LESS THAN \$15,000	28.8	27.7	27.7	36.1
\$15,000 TO < \$25,000	22.9	21.4	26.1	20.8
\$25,000 TO < \$35,000	14.2	12.7	20.0	19.6
\$35,000 TO < \$50,000	16.6	14.6	14.8	17.0
\$50,000 OR MORE	13.9	11.8	13.6	11.7

RACE	% DEPRESSIVE DISORDER			
	2011	2012	2013	2014
WHITE	20.0	18.8	20.0	20.8
BLACK	14.1	14.6	15.3	14.5
HISPANIC	16.8	11.9	24.0	18.5
OTHER	17.8	17.1	17.7	17.5
MULTIRACIAL	14.6	13.5	NA	28.6

AGE	% DEPRESSIVE DISORDER			
	2011	2012	2013	2014
18-24	11.6	13.2	14.5	12.8
25-34	18.2	17.2	21.2	18.4
35-44	19.8	18.5	17.8	20.4
45-54	22.3	19.8	21.5	20.3
55-64	21.4	18.2	21.2	22.6
65 AND OLDER	13.8	15.3	14.8	16.6

EDUCATION	% DEPRESSIVE DISORDER			
	2011	2012	2013	2014
LESS THAN H.S.	23.2	23.2	26.6	24.8
GRADUATED H.S.	16.2	16.4	16.6	18.0
SOME COLLEGE	18.0	16.3	19.3	19.1
GRADUATED COLLEGE	16.5	13.4	14.0	13.9



KIDNEY DISEASE

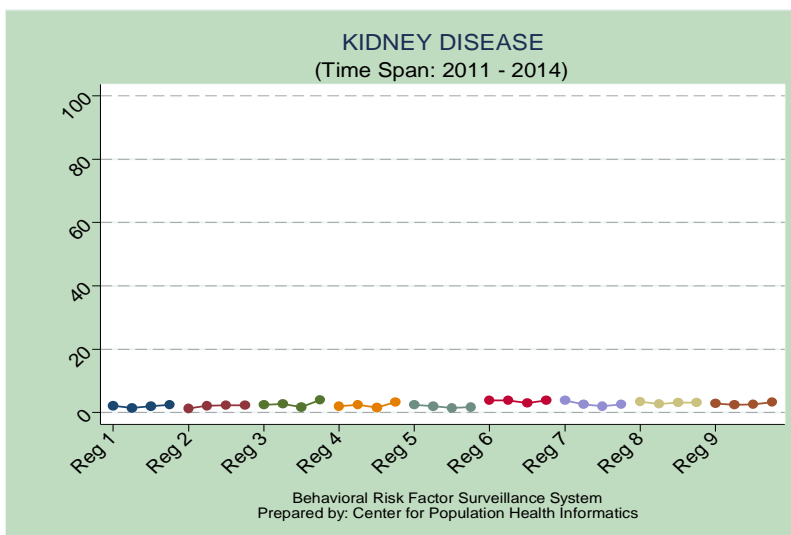
SEX	% KIDNEY DISEASE			
	2011	2012	2013	2014
MALE	2.7	2.6	1.7	2.8
FEMALE	2.5	2.3	2.7	3.0

INCOME	% KIDNEY DISEASE			
	2011	2012	2013	2014
LESS THAN \$15,000	4.0	3.9	3.3	6.8
\$15,000 TO < \$25,000	3.6	3.7	2.9	3.1
\$25,000 TO < \$35,000	1.9	2.3	1.8	3.0
\$35,000 TO < \$50,000	1.6	1.9	2.0	2.4
\$50,000 OR MORE	1.9	1.4	1.3	1.5

RACE	% KIDNEY DISEASE			
	2011	2012	2013	2014
WHITE	2.6	2.3	2.2	3.0
BLACK	2.6	3.2	2.8	3.2
HISPANIC	2.7	0.6	0.8	NA
OTHER	2.2	0.5	1.0	NA
MULTIRACIAL	2.0	3.3	NA	NA

AGE	% KIDNEY DISEASE			
	2011	2012	2013	2014
18-24	0.5	0.1	0	NA
25-34	0.9	0.6	0.3	NA
35-44	1.6	1.2	1.1	2.4
45-54	3.0	2.6	2.0	2.1
55-64	3.9	4.2	3.1	3.9
65 AND OLDER	5.3	5.6	6.4	6.8

EDUCATION	% KIDNEY DISEASE			
	2011	2012	2013	2014
LESS THAN H.S.	3.4	3.8	3.5	4.4
GRADUATED H.S.	2.5	2.3	1.9	2.5
SOME COLLEGE	2.2	2.1	2.6	3.2
GRADUATED COLLEGE	2.4	1.9	1.1	2.0



2011 CONDITIONS AND RISK FACTORS BY REGION

2011 CONDITIONS/RISK FACTORS (% PREVALENCE)	REGION									TOTAL
	1	2	3	4	5	6	7	8	9	
DIABETES	11.2	11.0	12.4	10.4	13.5	13.5	11.0	13.6	12.8	11.8
HYPERTENSION	38.7	32.3	36.5	36.9	40.4	41.9	41.1	40.3	41.2	38.4
CHOLESTEROL CHECK (LAST 5 YRS)	77.4	74.1	74.5	72.6	77.3	69.2	72.0	70.1	74.8	74.1
HIGH CHOLESTEROL	37.7	36.2	37.7	36.5	40.2	38.7	41.6	42.5	40.9	38.7
EVERY DAY SMOKER	17.2	13.2	21.1	21.7	20.5	22.6	20.2	19.7	23.0	19.3
ALL CURRENT SMOKERS	24.3	19.3	27.4	28.1	25.1	29.7	27.0	28.0	27.8	25.7
EX SMOKER	20.4	22.7	20.2	20.4	26.0	22.0	23.2	19.5	25.6	22.0
NEVER SMOKER	55.4	58.0	52.4	51.5	48.9	48.3	49.8	52.4	46.7	52.2
OVERWEIGHT	36.9	32.4	32.6	34.8	33.3	30.1	33.9	31.4	36.7	34.1
OBESE	32.2	31.3	33.9	31.0	35.2	35.4	34.9	37.3	34.3	33.4
MI (HEART ATTACK)	5.2	4.5	5.1	5.2	5.6	6.2	5.5	5.5	4.4	5.1
CHD (ANGINA)	4.6	3.6	4.8	6.3	6.2	5.9	4.5	5.8	4.4	4.9
STROKE	4.5	3.1	2.7	3.5	3.9	4.4	3.5	4.5	3.8	3.8
ASTHMA	11.6	10.4	10.2	12.5	12.6	11.3	8.6	10.2	12.7	11.1
SKIN CANCER	4.6	4.0	4.1	3.4	5.4	5.1	4.3	5.8	6.4	4.7
OTHER CANCER	7.3	6.7	6.0	6.4	6.7	6.1	7.4	5.9	7.0	6.7
COPD	6.9	5.1	6.8	6.8	8.7	6.2	7.3	6.9	7.6	6.8
ARTHRITIS	22.2	22.1	25.5	25.1	25.4	30.5	26.2	27.3	29.6	25.3
DEPRESSIVE DISORDER	20.1	16.5	17.2	17.4	18.6	20.0	17.1	16.9	18.1	18.1
KIDNEY DISEASE	2.2	1.3	2.4	2.1	2.4	3.8	3.8	3.5	2.9	2.6

2012 CONDITIONS AND RISK FACTORS BY REGION

2012 CONDITIONS/RISK FACTORS (% PREVALENCE)	REGION									TOTAL
	1	2	3	4	5	6	7	8	9	
DIABETES	13.5	10.6	11.3	11.3	13.2	12.3	12.4	13.4	12.5	12.2
HYPERTENSION	NOT AVAILABLE									
CHOLESTEROL CHECK (LAST 5 YRS)										
HIGH CHOLESTEROL										
EVERY DAY SMOKER	16.3	14.1	22.3	22.3	20.7	21.8	19.4	16.4	17.2	18.5
ALL CURRENT SMOKERS	21.4	19.1	28.7	28.2	26.5	27.6	23.9	27.2	25.6	24.8
EX SMOKER	18.4	22.2	22.0	21.8	28.0	23.6	20.5	21.4	23.2	21.9
NEVER SMOKER	60.3	58.7	49.4	50.0	45.5	48.8	55.6	51.3	51.3	53.4
OVERWEIGHT	34.6	33.2	33.7	32.5	38.7	37.4	35.3	37.8	33.9	34.9
OBESE	29.0	36.1	34.0	32.9	29.3	34.0	39.5	38.2	37.6	34.7
MI (HEART ATTACK)	4.8	3.6	4.9	3.0	7.9	6.4	4.5	6.1	4.6	4.8
CHD (ANGINA)	4.1	3.7	5.1	6.3	5.6	6.1	4.5	6.1	4.3	4.9
STROKE	3.2	2.4	2.7	3.2	4.8	7.5	3.3	6.1	5.0	4.0
ASTHMA	10.9	10.8	10.5	14.6	13.8	13.7	13.2	11.9	11.0	12.1
SKIN CANCER	5.3	5.0	4.3	4.3	5.0	5.5	4.4	7.1	7.3	5.4
OTHER CANCER	5.7	5.3	4.4	7.3	6.7	6.4	5.3	6.5	8.2	6.2
COPD	6.3	5.7	5.3	7.6	11.3	9.2	7.8	8.9	8.0	7.5
ARTHRITIS	25.2	23.7	25.1	27.3	28.0	34.1	27.6	33.5	31.9	28.0
DEPRESSIVE DISORDER	13.9	18.1	16.0	16.3	18.7	24.3	15.8	16.2	19.1	17.2
KIDNEY DISEASE	1.5	2.2	2.7	2.4	2.1	3.8	2.6	2.7	2.8	2.5

2013 CONDITIONS AND RISK FACTORS BY REGION

2013 CONDITIONS/RISK FACTORS (% PREVALENCE)	REGION									TOTAL
	1	2	3	4	5	6	7	8	9	
DIABETES	12.6	11.3	14.9	9.3	9.1	14.3	10.4	13.9	10.1	11.6
HYPERTENSION	36.6	38.8	46.0	37.3	38.5	44.2	44.6	43.6	35.6	39.8
CHOLESTEROL CHECK (LAST 5 YRS)	79.0	70.5	78.9	72.8	82.4	77.5	77.9	76.4	74.7	76.2
HIGH CHOLESTEROL	36.1	40.3	44.5	39.5	42.4	39.5	42.4	45.5	42.1	40.7
EVERY DAY SMOKER	17.5	12.5	17.6	21.1	22.7	11.4	15.9	16.3	16.9	16.7
ALL CURRENT SMOKERS	24.7	19.1	24.7	27.6	27.4	19.1	21.5	21.4	26.3	23.5
EX SMOKER	22.8	22.1	21.2	21.5	16.1	25.3	21.3	27.8	24.4	22.6
NEVER SMOKER	52.4	58.7	54.1	50.9	56.5	55.7	57.2	50.8	49.3	53.9
OVERWEIGHT	35.2	31.3	34.7	33.0	34.3	40.0	36.1	35.1	31.5	34.3
OBESE	29.7	34.3	41.5	31.7	31.6	33.8	35.4	30.2	32.6	33.1
MI (HEART ATTACK)	3.0	3.1	7.9	6.3	5.8	4.1	7.2	7.9	6.1	5.3
CHD (ANGINA)	3.4	3.0	6.8	5.2	4.0	7.3	6.4	7.6	4.3	5.0
STROKE	2.9	2.9	3.1	5.7	4.1	2.8	3.8	7.4	4.6	4.0
ASTHMA	9.9	11.9	11.4	12.2	10.3	13.2	12.5	15.9	15.1	12.3
SKIN CANCER	3.1	5.6	4.8	4.2	8.2	4.0	5.0	7.7	5.0	4.9
OTHER CANCER	5.3	5.1	8.2	5.0	7.7	7.6	7.8	9.1	7.1	6.6
COPD	7.7	2.6	8.4	6.4	6.1	9.2	9.7	7.9	10.8	7.5
ARTHRITIS	26.0	21.2	26.1	26.0	28.2	31.8	24.7	31.6	28.5	26.4
DEPRESSIVE DISORDER	17.1	15.0	16.3	20.9	16.0	28.3	17.9	23.3	18.8	18.7
KIDNEY DISEASE	2.1	2.3	1.8	1.6	1.5	3.0	2.1	3.2	2.6	2.2

2014 CONDITIONS AND RISK FACTORS BY REGION

2014 CONDITIONS/RISK FACTORS (% PREVALENCE)	REGION									TOTAL
	1	2	3	4	5	6	7	8	9	
DIABETES	11.0	11.4	11.1	11.2	12.0	13.3	9.9	12.6	11.0	11.3
HYPERTENSION	NOT AVAILABLE									
CHOLESTEROL CHECK (LAST 5 YRS)										
HIGH CHOLESTEROL										
EVERY DAY SMOKER	15.5	14.1	19.6	17.4	15.9	19.1	17.7	18.8	16.8	16.8
ALL CURRENT SMOKERS	22.7	21.1	25.1	25.5	25.0	27.8	23.6	27.1	23.5	24.0
EX SMOKER	23.4	19.3	25.2	21.1	24.5	23.0	21.5	18.5	23.8	22.2
NEVER SMOKER	53.9	59.6	49.6	53.4	50.5	49.1	54.9	54.4	52.7	53.8
OVERWEIGHT	30.2	31.9	35.4	35.2	36.1	36.0	35.5	30.6	39.1	34.0
OBESE	35.8	36.8	35.8	35.7	31.7	34.5	36.1	36.4	29.2	34.9
MI (HEART ATTACK)	5.0	3.5	5.9	4.4	6.3	7.0	4.2	6.0	6.5	5.2
CHD (ANGINA)	4.7	6.1	8.0	6.3	7.1	7.4	4.4	5.2	8.1	6.1
STROKE	3.3	3.8	4.4	3.1	4.7	3.8	4.5	3.4	3.6	3.8
ASTHMA	11.6	9.0	12.6	13.2	15.0	14.1	10.8	14.2	16.0	12.5
SKIN CANCER	5.6	4.4	5.7	3.3	6.5	4.3	4.3	4.9	6.5	5.0
OTHER CANCER	5.5	6.7	4.8	6.1	7.4	6.2	8.5	7.3	7.2	6.5
COPD	6.3	6.0	6.7	6.5	7.0	8.9	7.6	10.4	11.2	7.6
ARTHRITIS	24.5	23.9	25.5	27.7	29.6	32.0	28.7	25.1	31.2	27.1
DEPRESSIVE DISORDER	19.1	15.7	21.4	15.6	21.9	22.9	18.2	15.9	21.1	18.7
KIDNEY DISEASE	2.4	2.3	4.0	3.3	1.8	3.9	2.6	3.1	3.3	2.9