



Coordinated System of Care (CSoC)

Transforming the System

July 25, 2013

Member Referrals

Region	3/31/13	6/30/13	Change
Region 1 – Jefferson parish	313	377	64
Region 2 - Baton Rouge area	519	636	117
Region 7 - Alexandria area	314	417	103
Region 8 – Shreveport area	539	739	200
Region 9 - Monroe area	437	505	68
Total	2122	2674	552

Referrals by Agency/Entity

Referring Agency	3/31/13	6/30/13	Change
DCFS	296	345	49
OJJ	234	245	11
OBH	102	109	7
DOE/School	68	158	90
Other Referrals: (Caregiver, Hospitals, Licensed Mental Health Professionals and other Juvenile Entities)	1422	1817	395
Total	2122	2674	552

CSoC Current Enrollment

Region	3/31/13	6/30/13	Change
Region 1 - Jefferson parish	102	105	3
Region 2 -Baton Rouge area	144	179	35
Region 7 - Alexandria area	109	109	0
Region 8 –Shreveport area	181	212	31
Region 9 - Monroe area	189	241	52
Total	725	846	121

Medicaid/Non-Medicaid Enrollment: *

Population	Number	Percentage
Medicaid	827	97.8%
Non-Medicaid	5	0.6%
Pending	14	1.6%
Total	846	100.0%

*based on current eligibility and authorization

Race

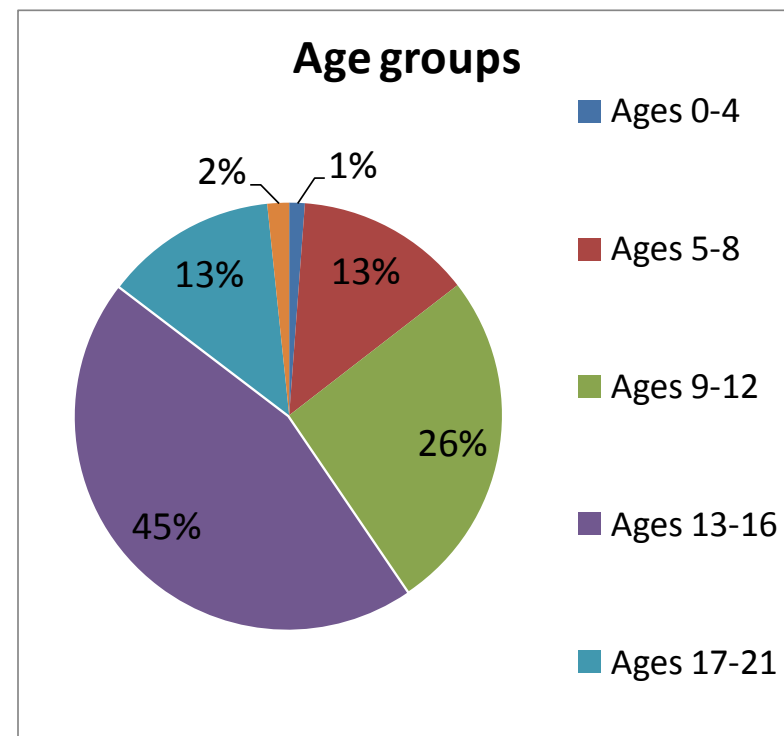
Race	Number	Percentage
African-American	490	58.0%
Caucasian	246	29.1%
American Indian	2	0.2%
Pacific Islander	5	0.1%
Other Ethnicity	13	1.6%
Unspecified	90	11.0%
Total	846	100.0%

Gender

Gender	Number	Percentage
Male	547	64.5%
Female	286	34.0%
Unspecified	13	1.5%
Total	846	100.0%

Age Groups

Age Groups	Number
up to 4	10
5 - 8	113
9 - 12	220
13 - 16	380
17 - 21	109
Unspecified	14
Total	846



Residence at Time of Referral

Residence	Number	Percentage
Private Residence	698	82.5%
Unspecified	79	9.3%
Foster Home	50	5.9%
Group Home /Halfway House	8	1.0%
Homeless/shelter	8	1.0%
Secure placements	2	0.2%
Other Caregiver	1	0.1%
Total	846	100.0 %

Member Authorizations

Service Type	Auths
Parent Support/Training	1403
Youth Support/Training	1399
CPST/Homebuilders	766
Psychosocial Rehabilitation	702
Inpatient Psychiatric Facility	538
Short Term Respite	346
Outpatient + Intensive Outpatient Psychiatric Services	106
Independent Living/Skills Building	88
Crisis Stabilization	34
SA Residential	27
Psychiatric Residential Therapeutic Facility	9
Therapeutic Group Home	3
Total	5421

Demographic Summary

- **Children and Youth served in CSoC :**
 - 552 referrals since last report
 - 97.8% Medicaid funded
 - 12.7 is the average age
 - 65% are males and 34% are females
 - 57.9% are African American
- **121 new enrollees**
- **The top 3 services requested and authorized for CSoC members are:**
 - 1 – Parent Support and Training
 - 2 – Youth Support and Training
 - 3 – CPST / Homebuilders

Network Development and Expansion



Providers by Region

5 specialized CSoC services

CSoC Service	Jefferson Parish	Region 2	Region 7	Region 8	Region 9	Total
Independent Living/Skills Building	6	3	4	9	7	29
Parent Support & Training	1	1	1	1	1	5
Short Term Respite Care	2	2	1	4	5	14
Crisis Stabilization	0	1	0	1	1	3
Youth Support & Training	1	1	1	1	1	5
Totals	10	8	7	16	15	56

*** 24 % increase in these provider types since last report**

Crisis Stabilization (CS) and Short Term Respite (STR):

- Contracted two additional CS providers since last quarter
- Creating Request For Proposal (RFPs) for CS and STR to recruit for current and implementing Phase 2 regions
- Created informational materials with an overview of each service, and listing resources/next steps for interested providers
- Continuing to work with current providers who are interested in expanding services to include CS and STR

Therapeutic Group Home (TGH) and Therapeutic Foster Care (TFC):

- Identifying current Non-Medical Group Homes (NMGH) that can transition into TGH
- Working with RFP responders for TGH, and also have an additional provider interested
- One new TFC contracted and two more have applied for licensure

Psychiatric Residential Treatment Facility (PRTF) recruitment:

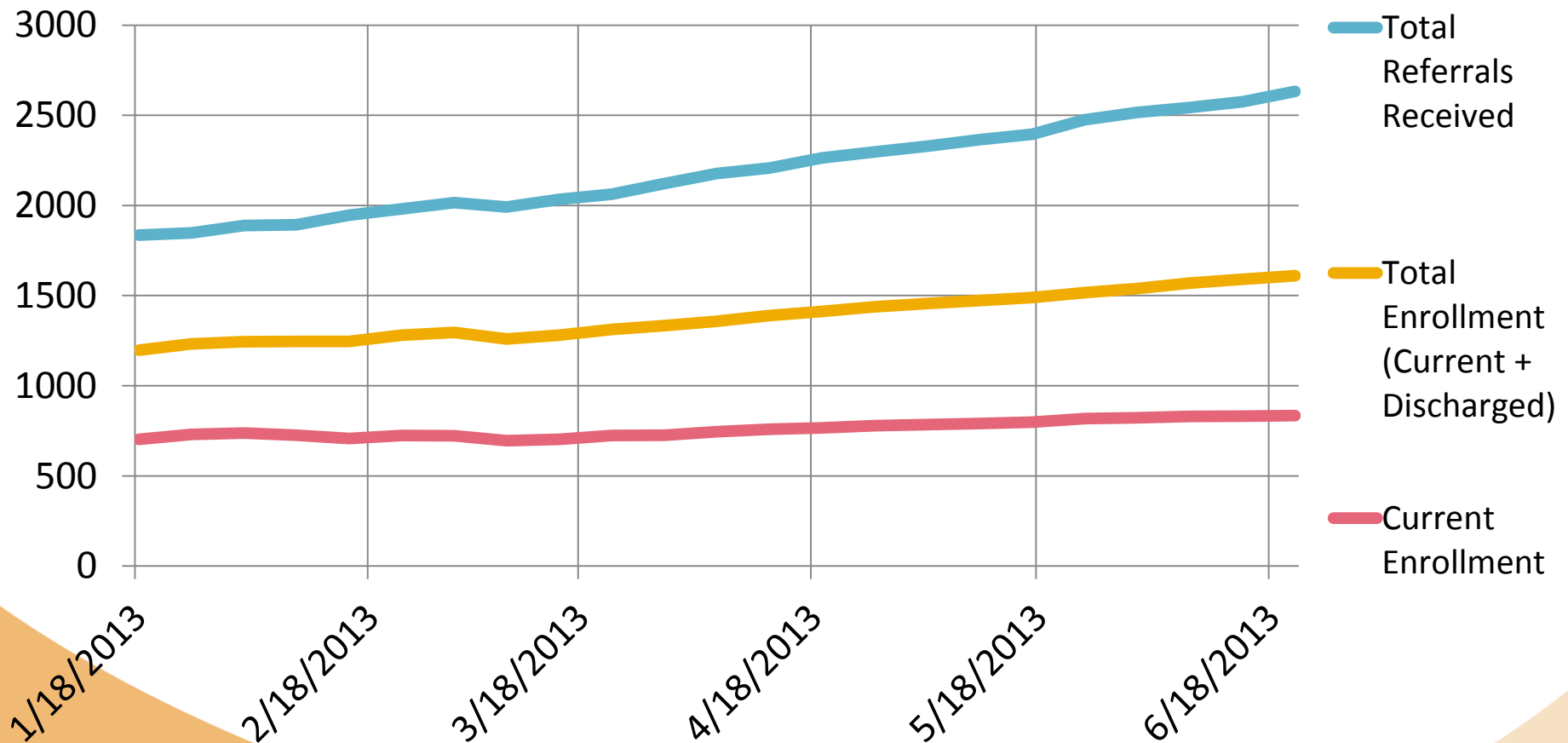
- 104 PRTF beds currently in place and expansion is in process
- Working with four additional providers for this level of care to add a total of 145 more beds
- Planning session scheduled on 7/23/13 with new PRTF provider

Expand Evidence Based Practice (EBP) capacity through learning and technical assistance

- Partner with Medical Director to expand into EBP for 0-6 population
- Multi-Systemic Therapy - 35 providers across the state (increase of 5 providers since last quarter)
- Functional Family Therapy - 8 providers across the state (increase of 1 provider since last quarter)
- Homebuilders - 12 providers across the state (increase of 2 providers since last quarter)

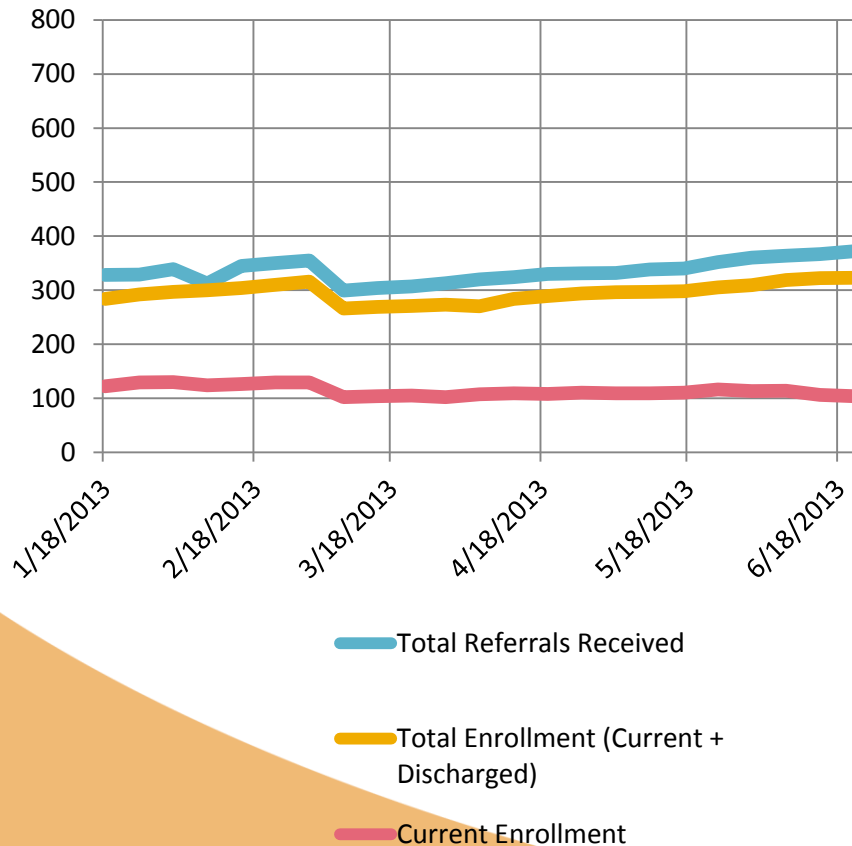
Enrollment: By the Numbers

Referrals and Enrollment- All Regions (1/13 to 6/13)

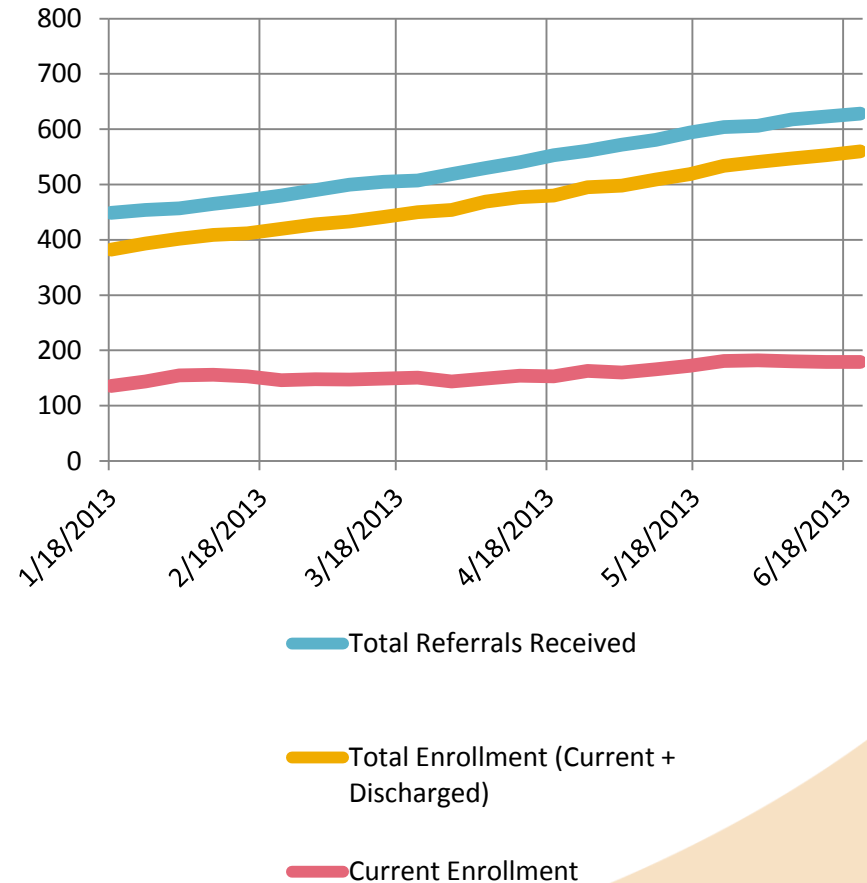


Referrals/Enrollments by Region (1 and 2)

Region 1 Enrollment and Referrals

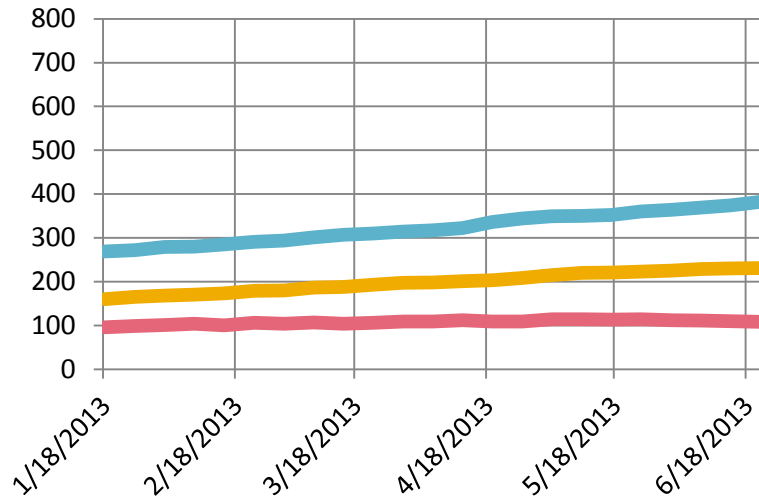


Region 2 Enrollment and Referrals

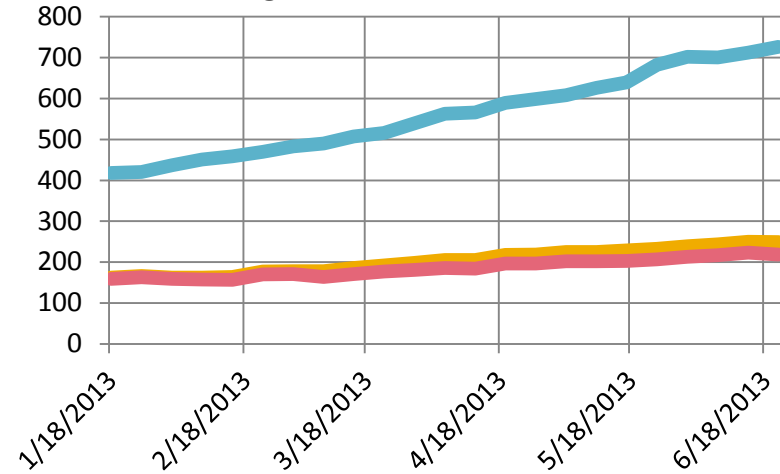


Referrals/Enrollments by Region (7, 8, 9)

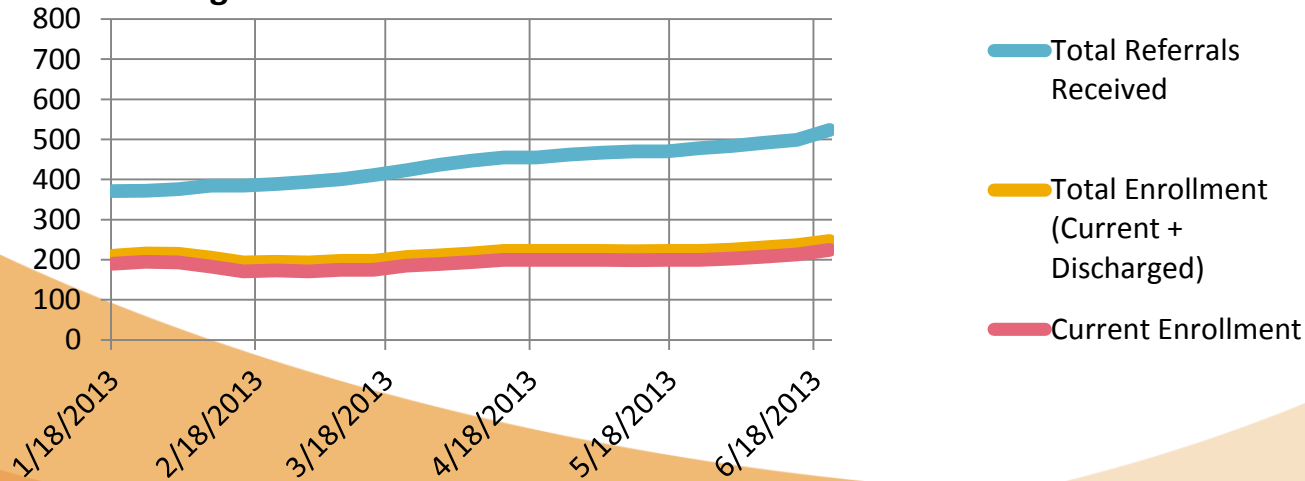
Region 7 Enrollment and Referrals



Region 8 Enrollment and Referrals



Region 9 Enrollment and Referrals



Referral/Enrollment Differentiation

- Child/youth and family has Freedom of Choice to enroll or not
- Availability of alternative programs and sources of support varied across regions
- Different levels of provider collaboration across regions
- New Program
 - Learning curve
 - How to engage young people and families
 - Changes in the enrollment process and adjusted timeframes
 - How to identify appropriate individuals to refer
 - Skill level for conducting Independent Behavioral Health Assessment (IBHA) form and Child and Adolescent Needs and Strengths (CANS) assessment tool

Intervention Strategies

- More trainings were held across all regions and provider types, and with state agency direct workers re: Eligibility and Referral Process
- Additional internal trainings at Magellan re: eligibility screening tool
- Remediated specific Certified Providers (CP) when warranted, and provided 1:1 technical assistance/instruction until improved assessment skills were demonstrated
- Targeted trainings on CANS and IBHA were held for CP Network and the Wraparound agency's Licensed Mental Health Practitioner on a consistent and bi-monthly basis .
- Training "Help" documents posted online
- Result: an increase in quality CANS assessments and IBHA forms submitted
- Creating strategies to improve engagement with youth and family members

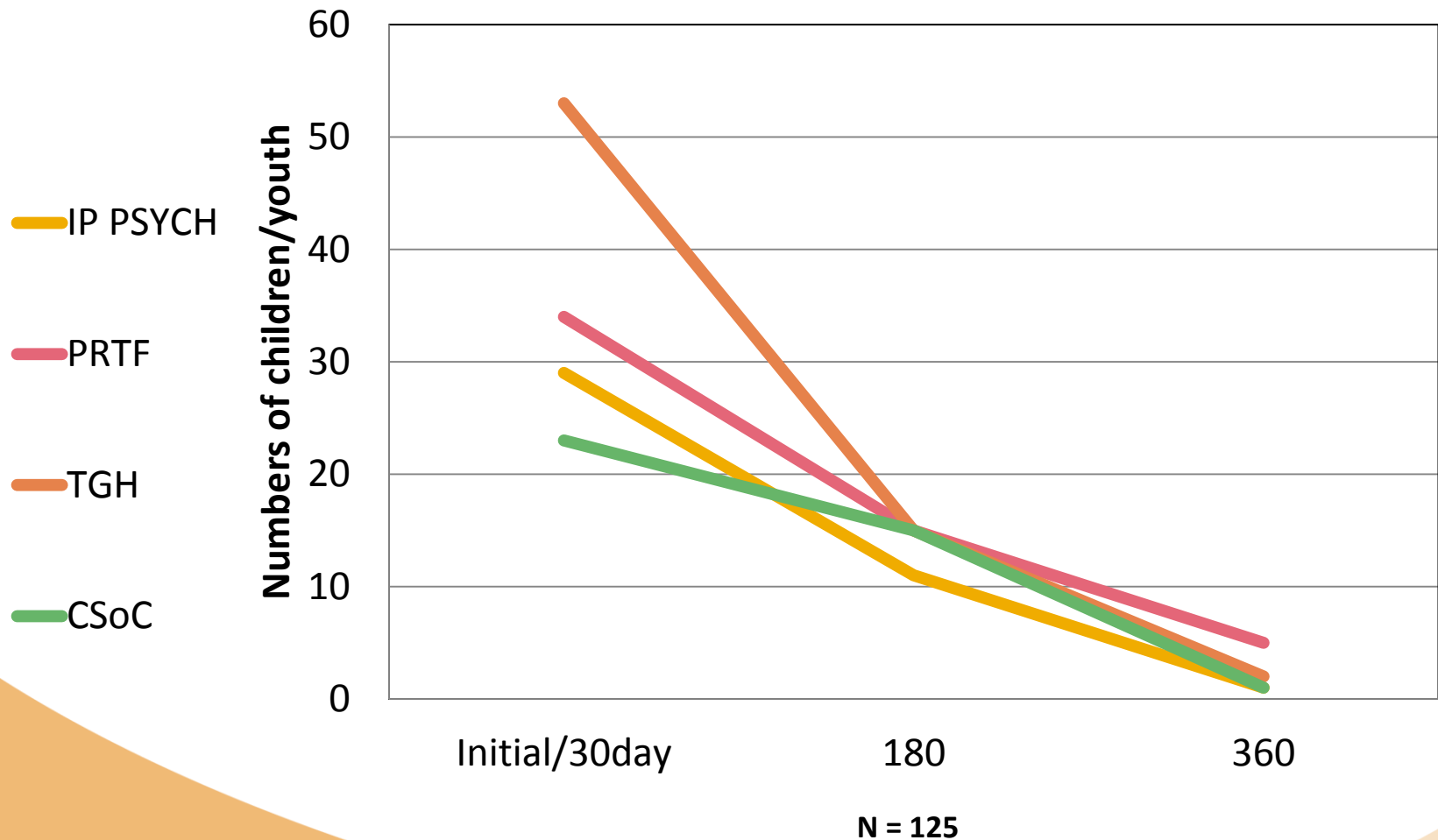
Showing Results: Tracking trends and transforming care



Trends in Children/Youth Outcomes Data

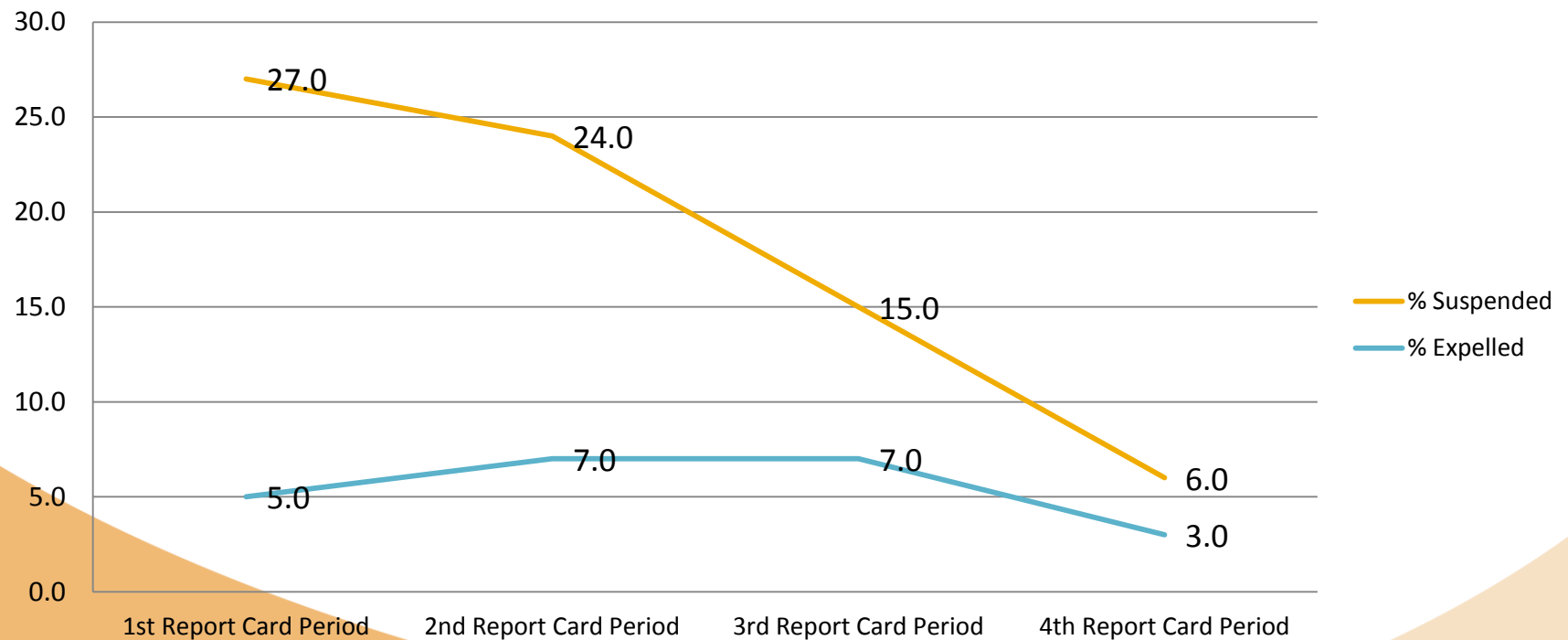
- Improved Functioning demonstrated:
 - through Child and Adolescent Needs and Strengths (CANS) assessment scores tracked overtime
 - decline in the # of suspensions and/or expulsions
 - decline in the # of out of home placements
 - downward trend in the # of inpatient psychiatric hospital admissions and # of total days
- What we know anecdotally:
 - children and youth are achieving the goals identified on their plans of care
 - increased utilization of natural and informal supports documented on Plans of Care

Child and Adolescent Needs and Strengths (CANS) Assessment Scores



School Suspensions and Expulsions

% Suspended or Expelled 8/2012 - 2/2013

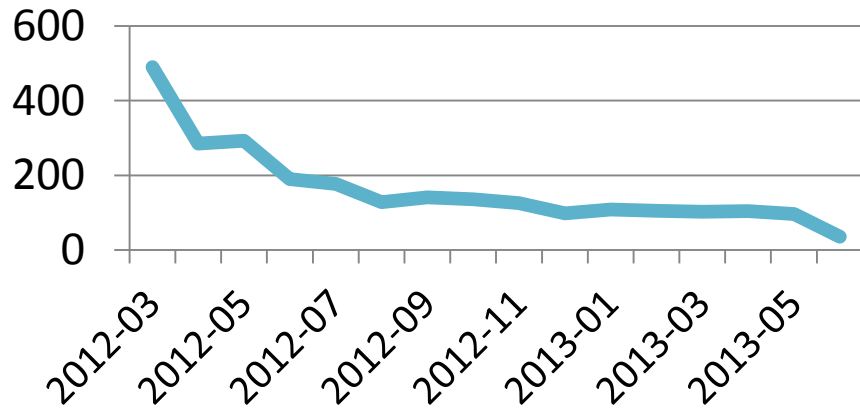


Out of Home Placements: (3/1/12- 5/3/13)

- Percent of CSoC children who had restrictive placements prior to enrollment in WAA = $444/1656 = 26.8\%$
- Percent of CSoC youth in restrictive placement after enrolling in WAA = $223/1656 = 13.5\%$
- A significant reduction demonstrated overtime

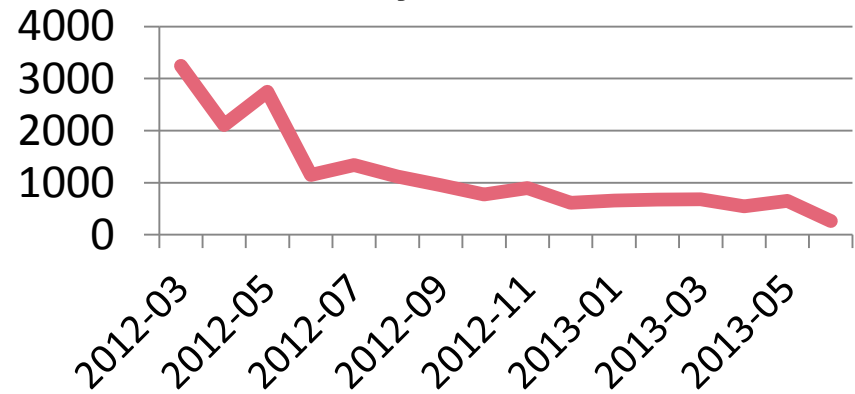
CSoC Children Inpatient Psychiatric Utilization

Admits / 1000



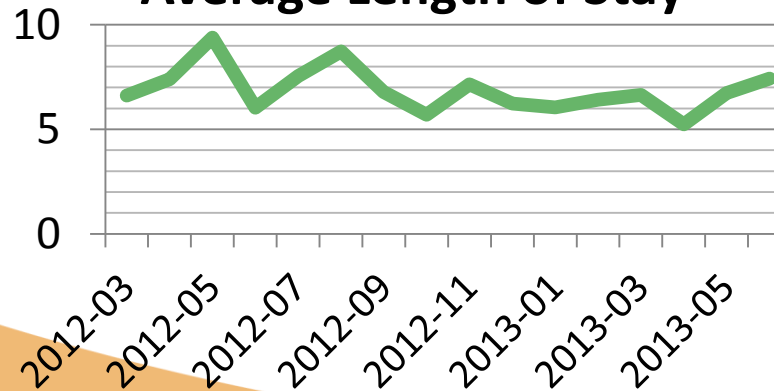
Total Admissions for all CSoC Inpatient Stays in Month /
Number of CSoC Participants in Month * 1000

Days / 1000



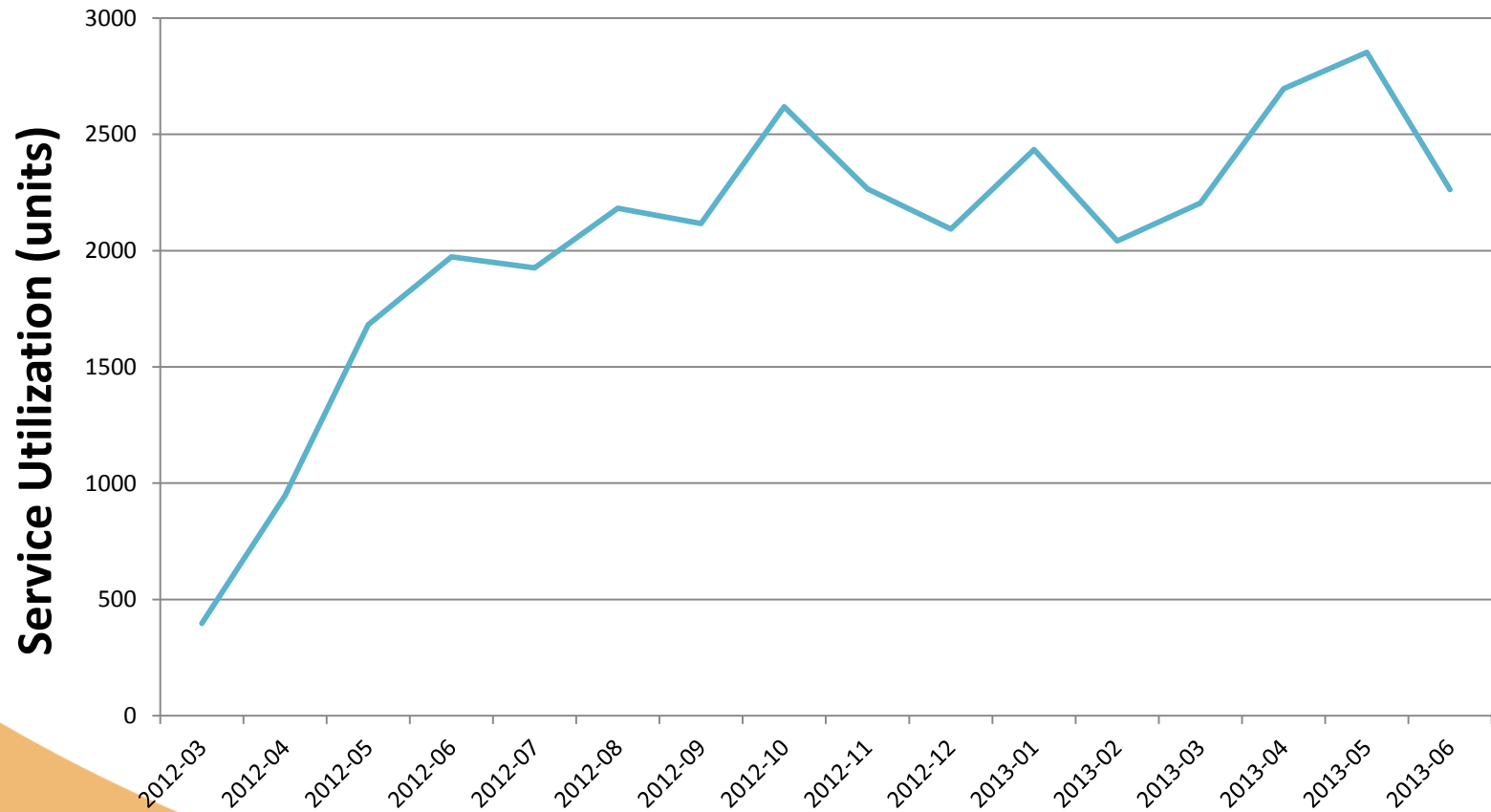
Total Days for all CSoC Inpatient Stays in Month /
Number of CSoC Participants in Month * 1000

Average Length of Stay

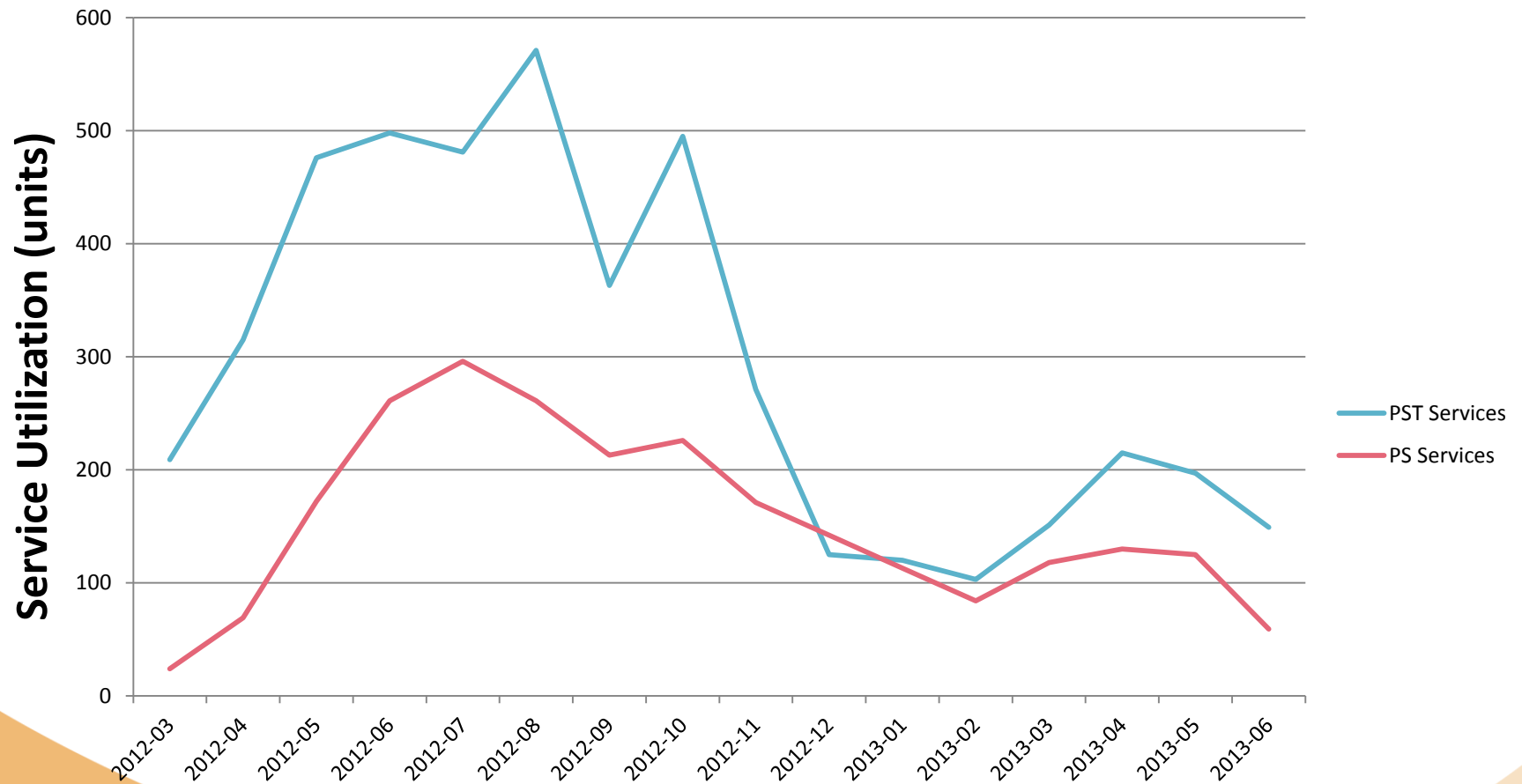


Total Days for all CSoC Inpatient Stays in Month /
Total Admissions for all CSoC Inpatient Stays in Month

Home and Community Based Services

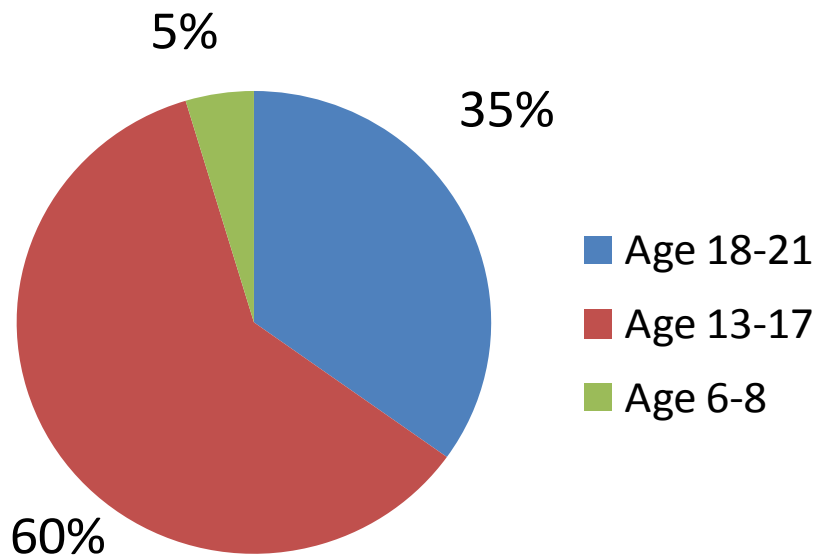


Parent /Youth Support and Training Service Utilization



Top Utilizers of Inpatient Psychiatric Hospitals Among All LBHP Children

Children with 6 or more admissions



- 43 children represented
- 27 have been referred to CSoC
- 16 received services in non-implementing CSoC regions

Shaping Systems: Targeted Collaborative Efforts



Areas of Focus

- Schools Districts
- Office of Citizens with Developmental Disabilities
 - Partnership with OCDD/OBH/Magellan for onsite trainings
 - Site visits and smaller group discussions to follow
 - Focused trainings for WAA/FSO staff on unique needs of child/youth with developmental disabilities
- Outreaching Faith Based Communities
- FINS partnership
- Community Team development and support
- Tracking “High Utilizers”
- Tracking “Transition” age youth

Collaborative efforts continue...

- Weekly “Clinical Rounds” with Dr. Dalton/OBH/OJJ/DCFS
- Weekly team discussions on “High Utilizers”
- Education and training for discharge planners and staff at inpatient and residential facilities
- Active management of DCFS and OJJ children in residential settings
- Ongoing collaboration with Bayou Health plans proving tremendously beneficial in identifying and addressing individual medical and behavioral/mental health needs.