



One Pandemic, Five Hurricanes: Quantifying Environmental Trauma

Wendy Bowlin, MBA, MS, LPC, Director of Quality and Outcomes
Joseph Shayka, MA, BS, Lead Data and Reporting Analyst
Amanda Favrot, MS, LPC, Quality Project Manager

Louisiana Coordinated System of Care
Magellan of Louisiana

CSoc State Governance Board Meeting – 12/01/2021

Several colorful triangles of various sizes and colors (blue, green, yellow, orange, purple) are scattered across the bottom right area of the slide.

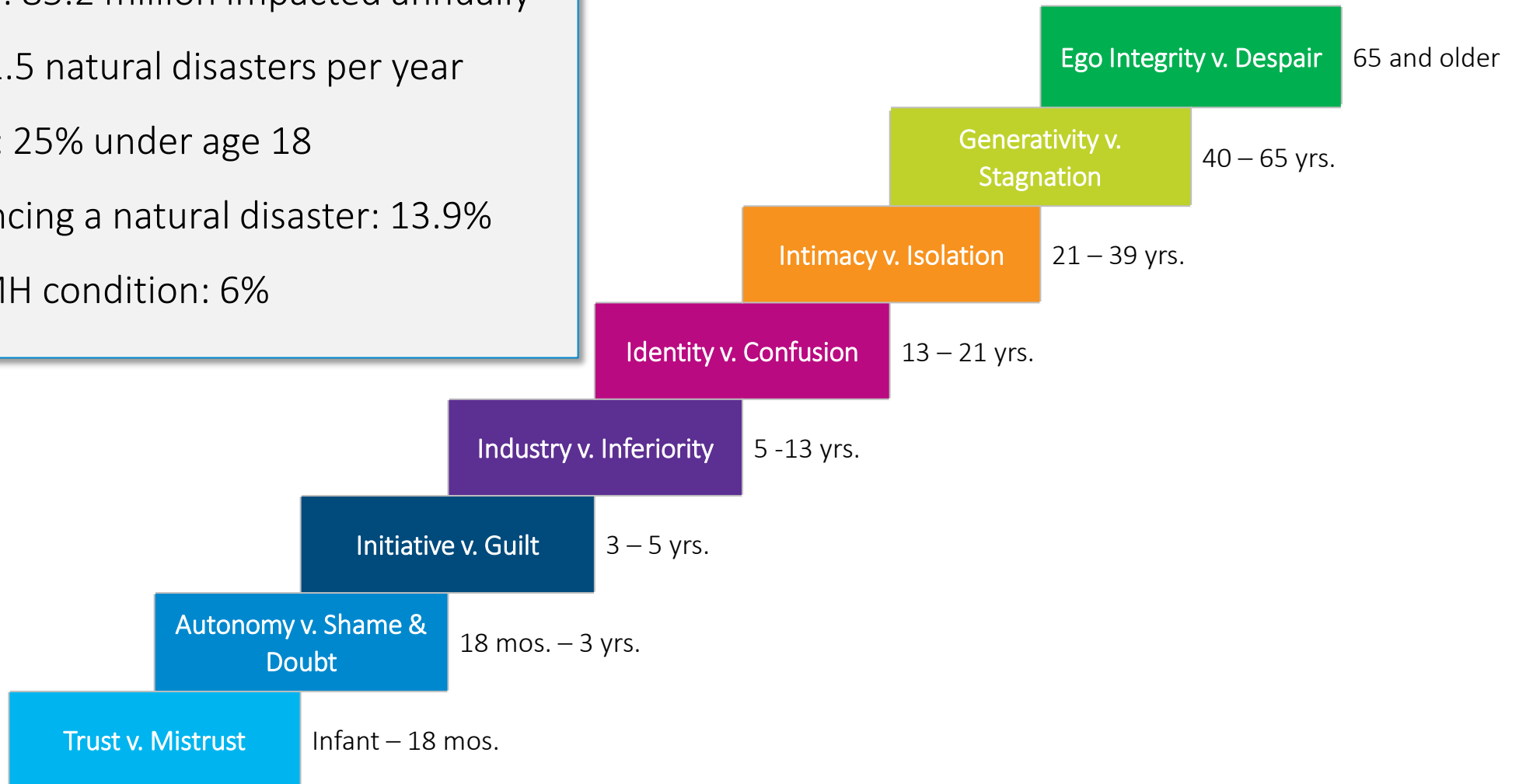
Magellan
HEALTHCARE®

Agenda

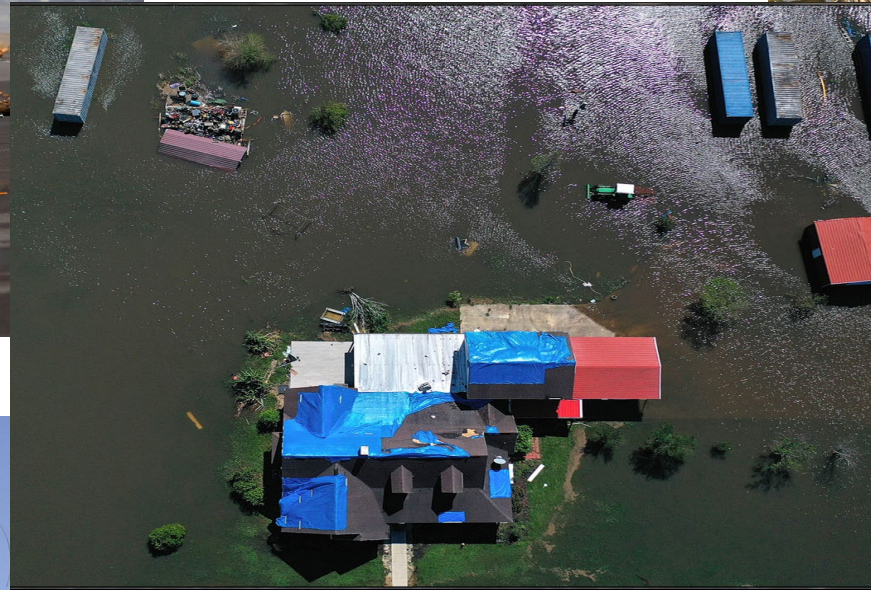
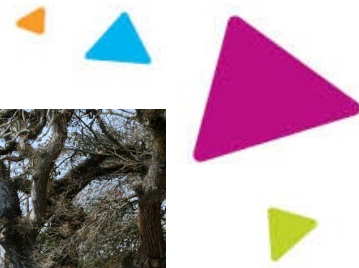
1. Impacts of Natural Disasters
2. Hurricanes and COVID-19 in Louisiana
3. Research Design/Methodology
4. Results
5. Next Steps

Impact of Natural Disasters on Youth & Community

- North America: 85.2 million impacted annually
- US average: 21.5 natural disasters per year
- US population: 25% under age 18
- Youth experiencing a natural disaster: 13.9%
- Will develop MH condition: 6%



Hurricanes in Louisiana



Five Storms in 2020



<https://www.nola.com>

Tropical Storm Cristobal

Landfall: Port Sulfur, LA on June 7 *Region 1*

Tropical Storm Marco

Landfall: New Orleans, LA on Aug. 25 *Region 1*

Hurricane Laura (Category 4)

Landfall: Cameron, LA on Aug 27. *Region 6*

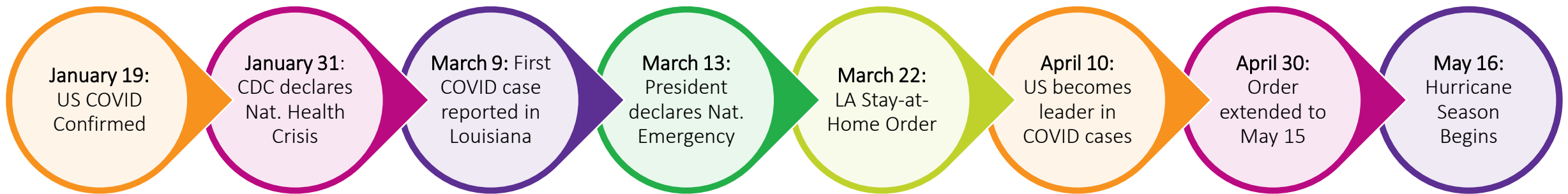
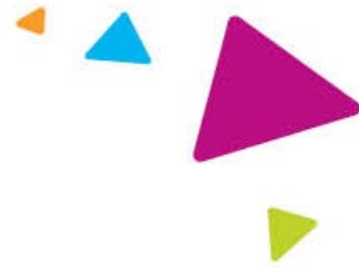
Hurricane Delta (Category 2)

Landfall: Creole, LA on Oct. 9 *Region 6*

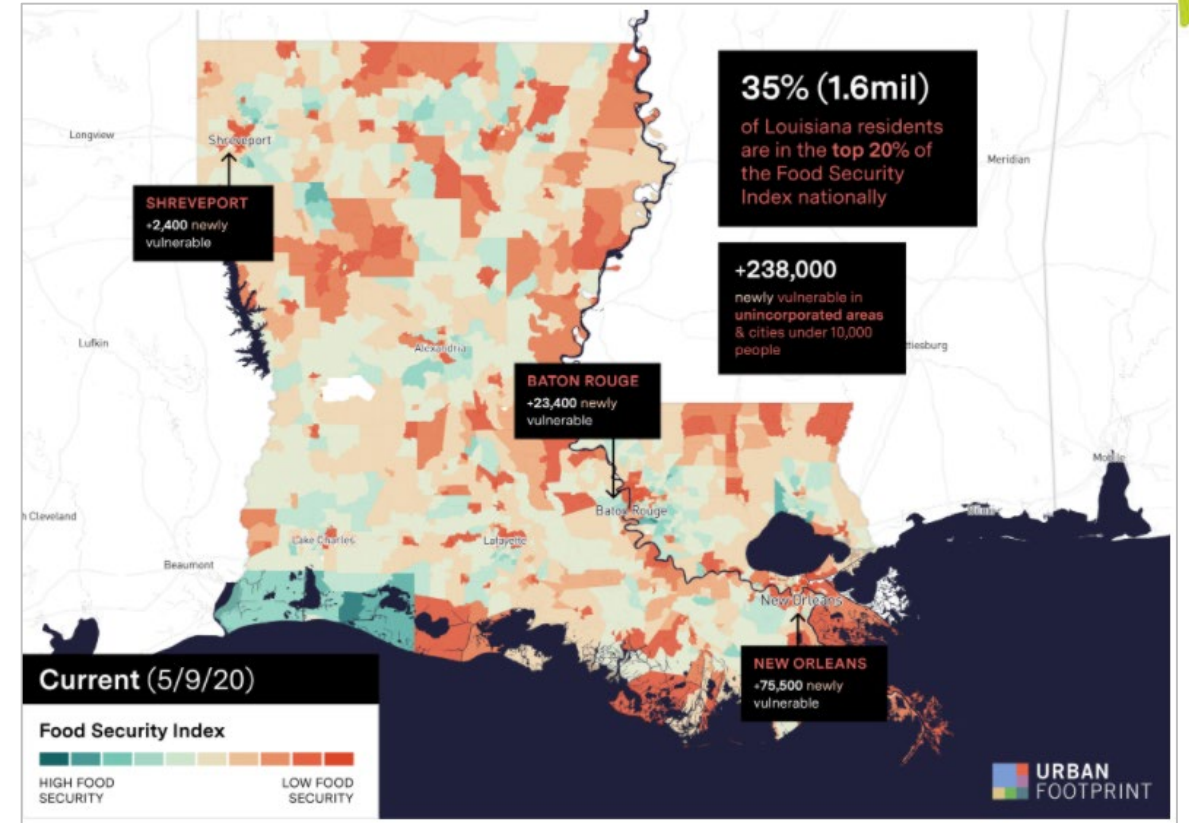
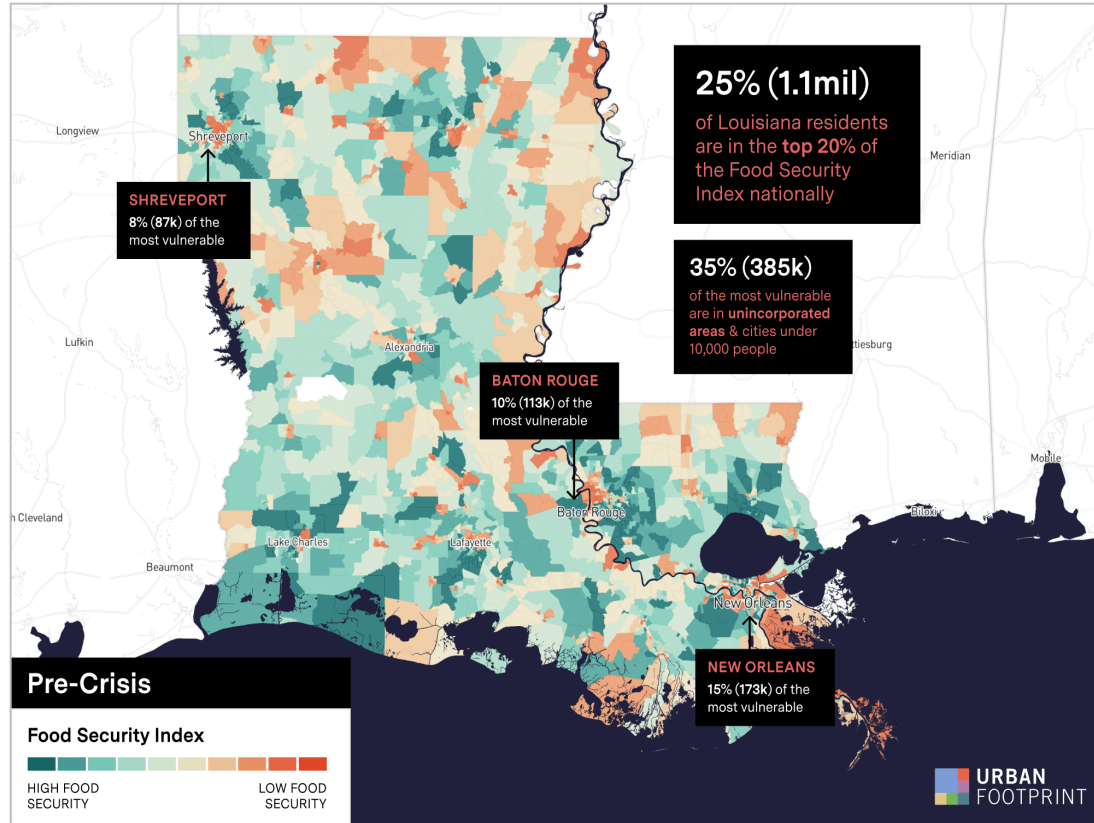
Hurricane Zeta (Category 3)

Landfall: near New Orleans, LA on Oct. 28. *Region 1*

2020 Hurricanes in Context: COVID-19



Impact of COVID-19 – Food Insecurity

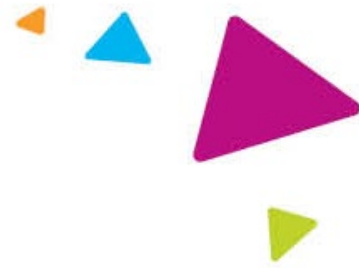


<https://urbanfootprint.com/mapping-a-path-to-an-equitable-recovery-in-louisiana/>

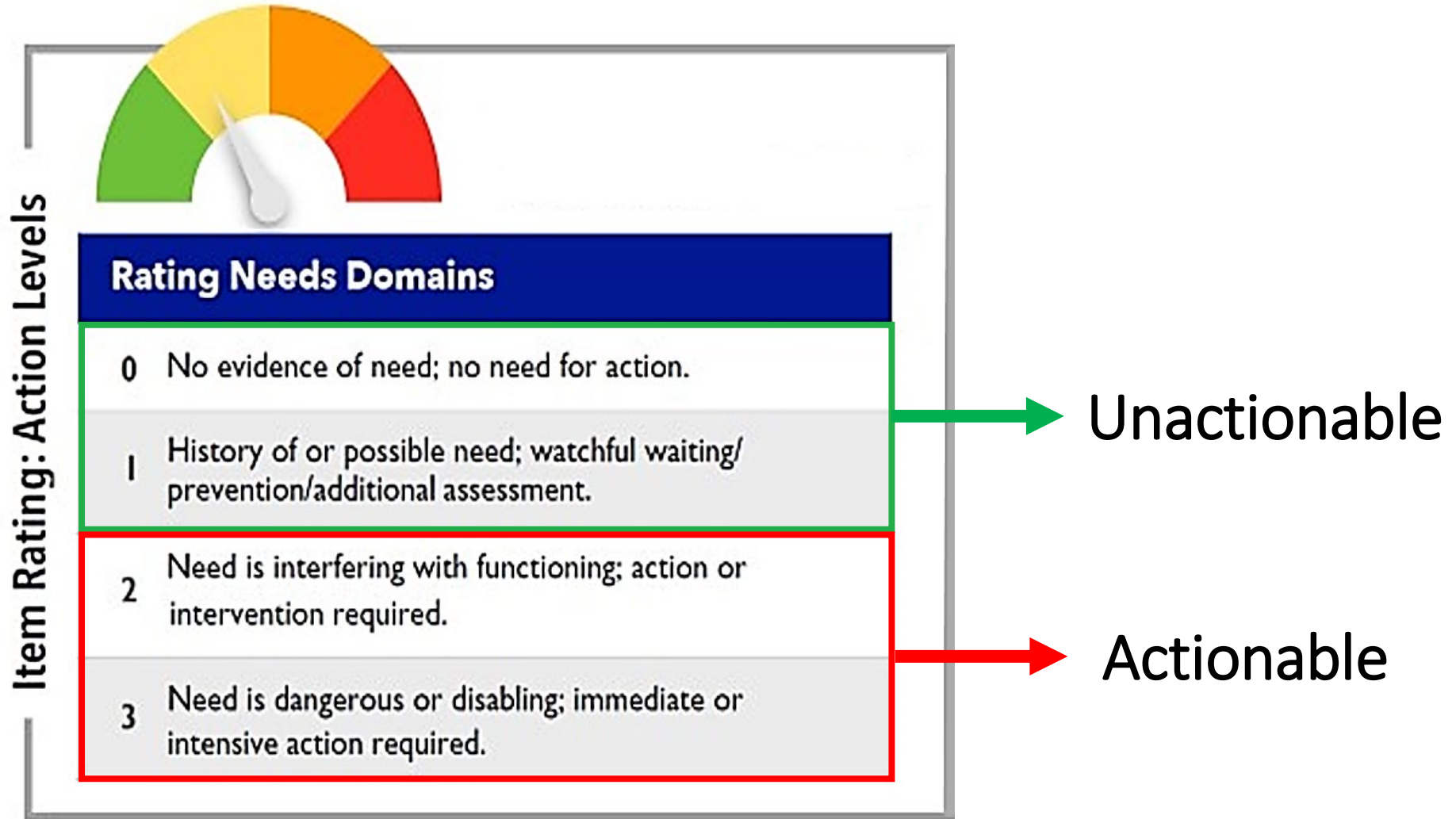
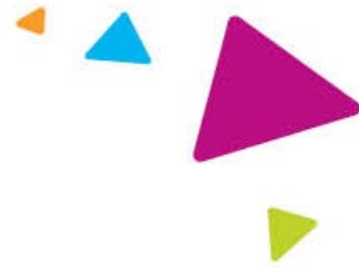
Study Questions

Were there differences in youth outcomes due to **COVID-19** or **Hurricane** impact levels experienced in their home and communities?

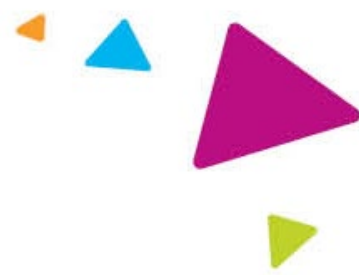
Defining Clinical Impact



CANS Item Actionability

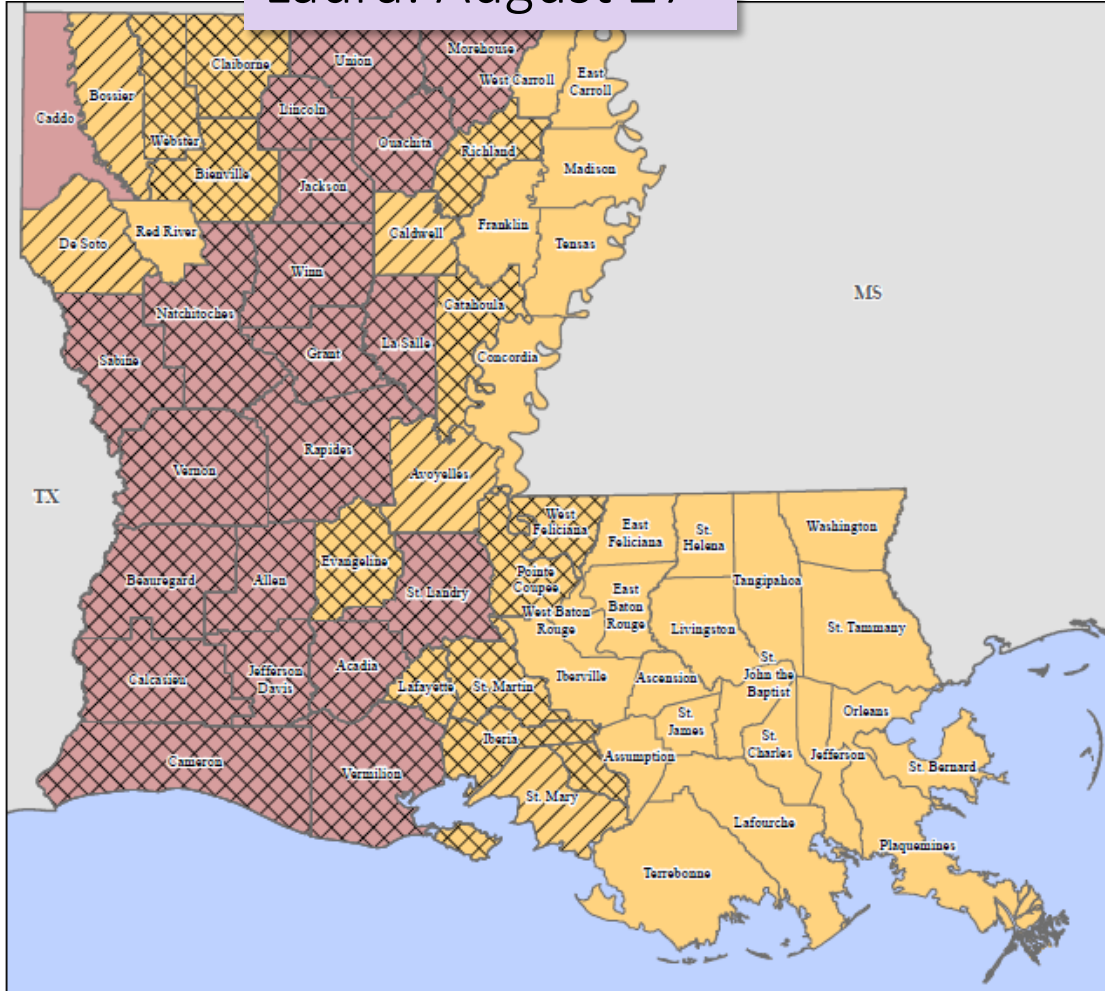


Critical Time Periods

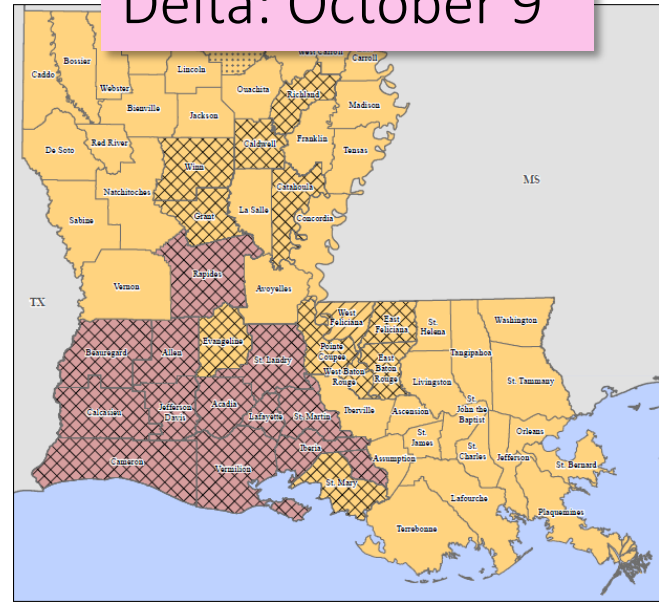


Defining Hurricane Impact

Laura: August 27



Delta: October 9



Public Assistance by Category

- Category A: Debris removal
- Category B: Emergency protective measures
- Category C: Roads and bridges
- Category D: Water control facilities
- Category E: Public buildings and contents
- Category F: Public utilities
- Category G: Parks, recreational, and other facilities

Zeta: October 28

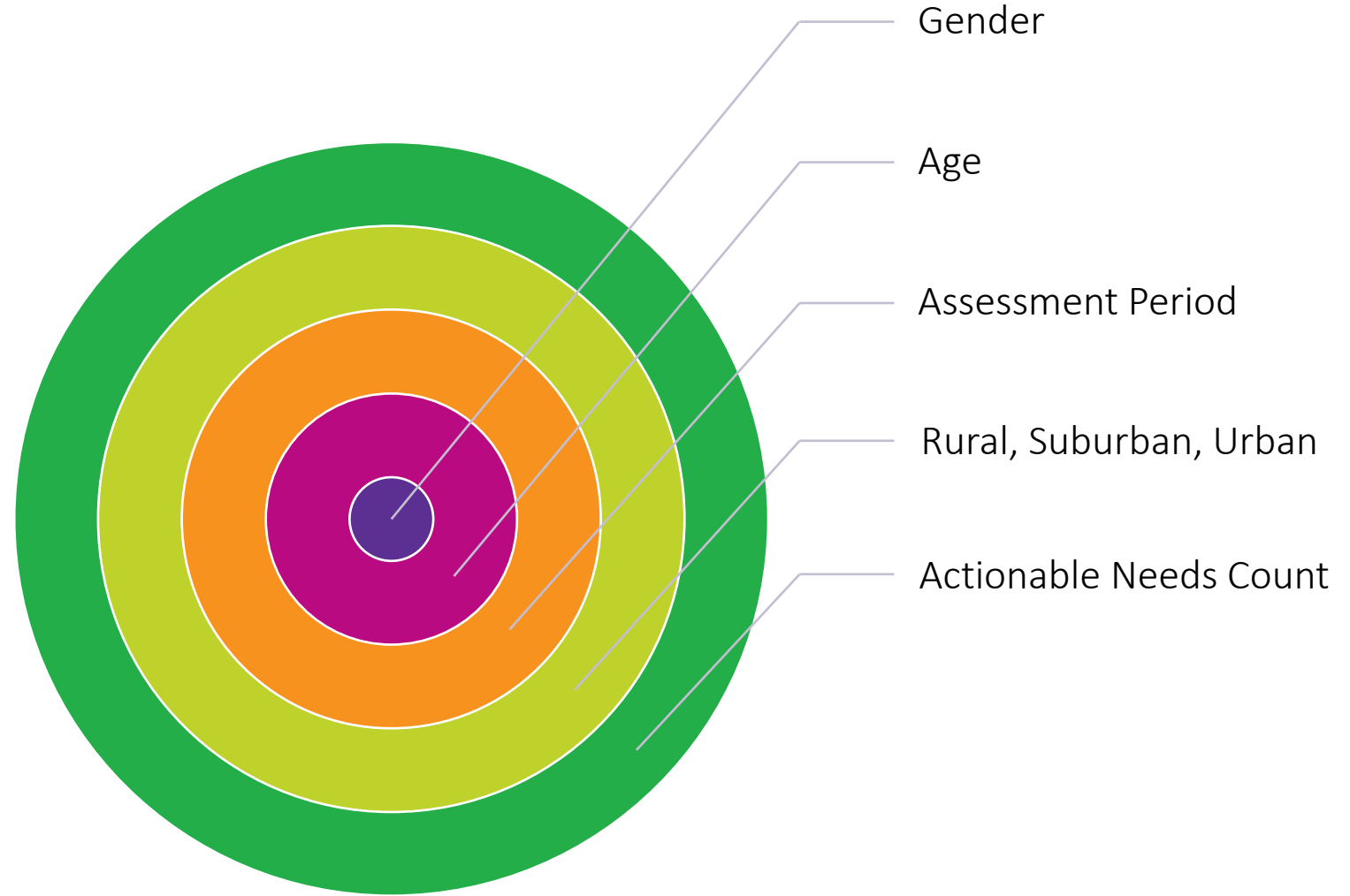


Designated Counties

- Public Assistance (Category B)
- Public Assistance (Categories A and B)
- Public Assistance (Categories B - G)
- Public Assistance (Categories A - G)
- Individual Assistance and Public Assistance (Categories A - G)

Optimal Pair Matching

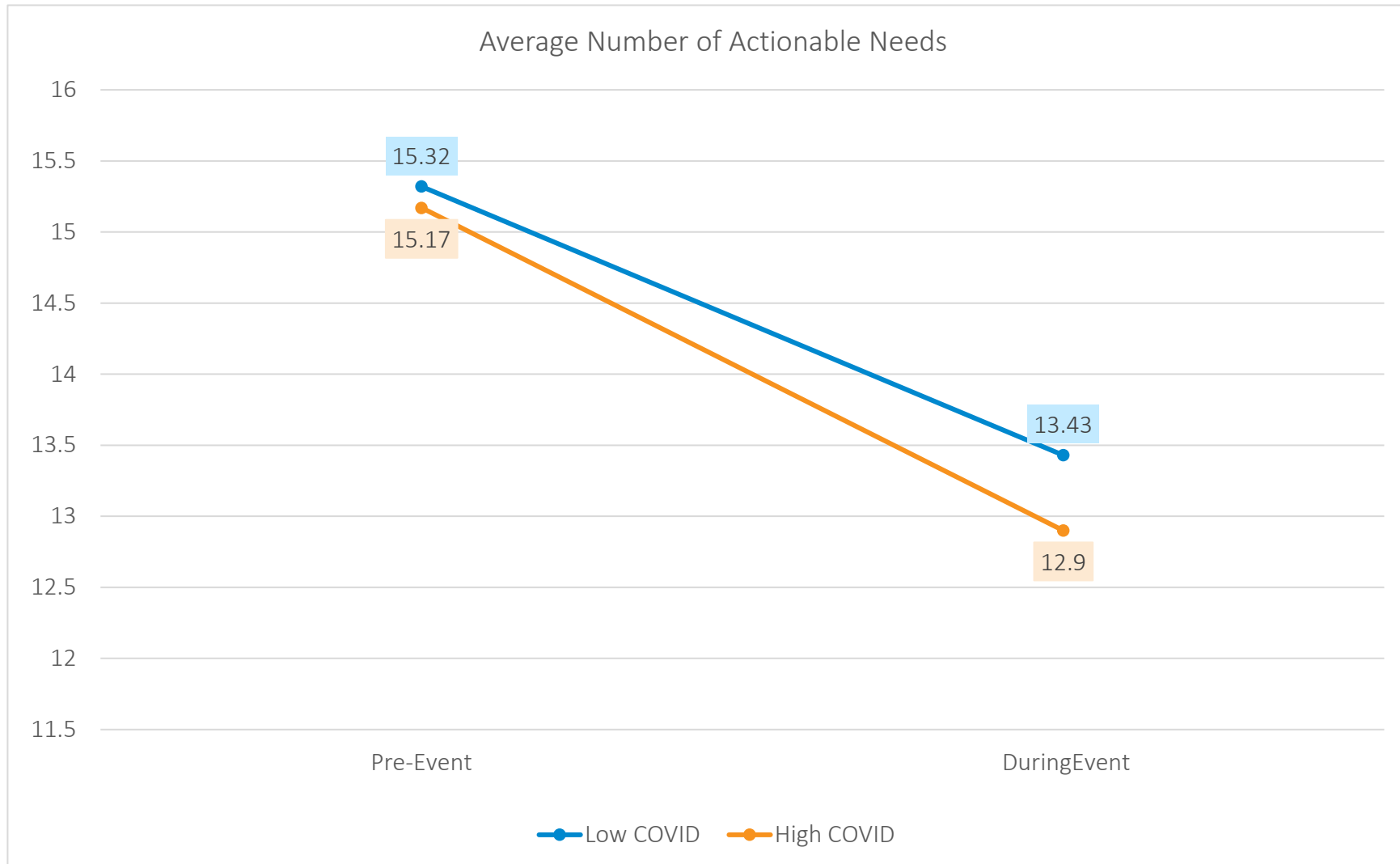
Compares youth with similar characteristics within the high and low group.



The slide features a light blue horizontal band across the middle. Above and below this band are several triangles in blue, purple, and magenta, some pointing up and some down, creating a decorative border.

Results

COVID-19 Results

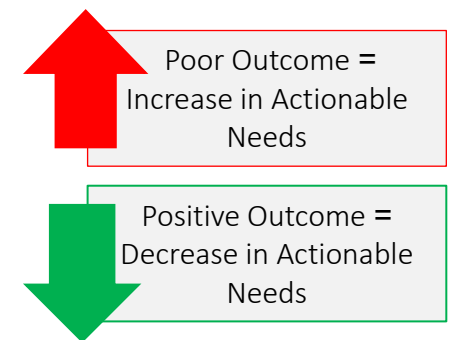


Change in the Average Number of Actionable Needs

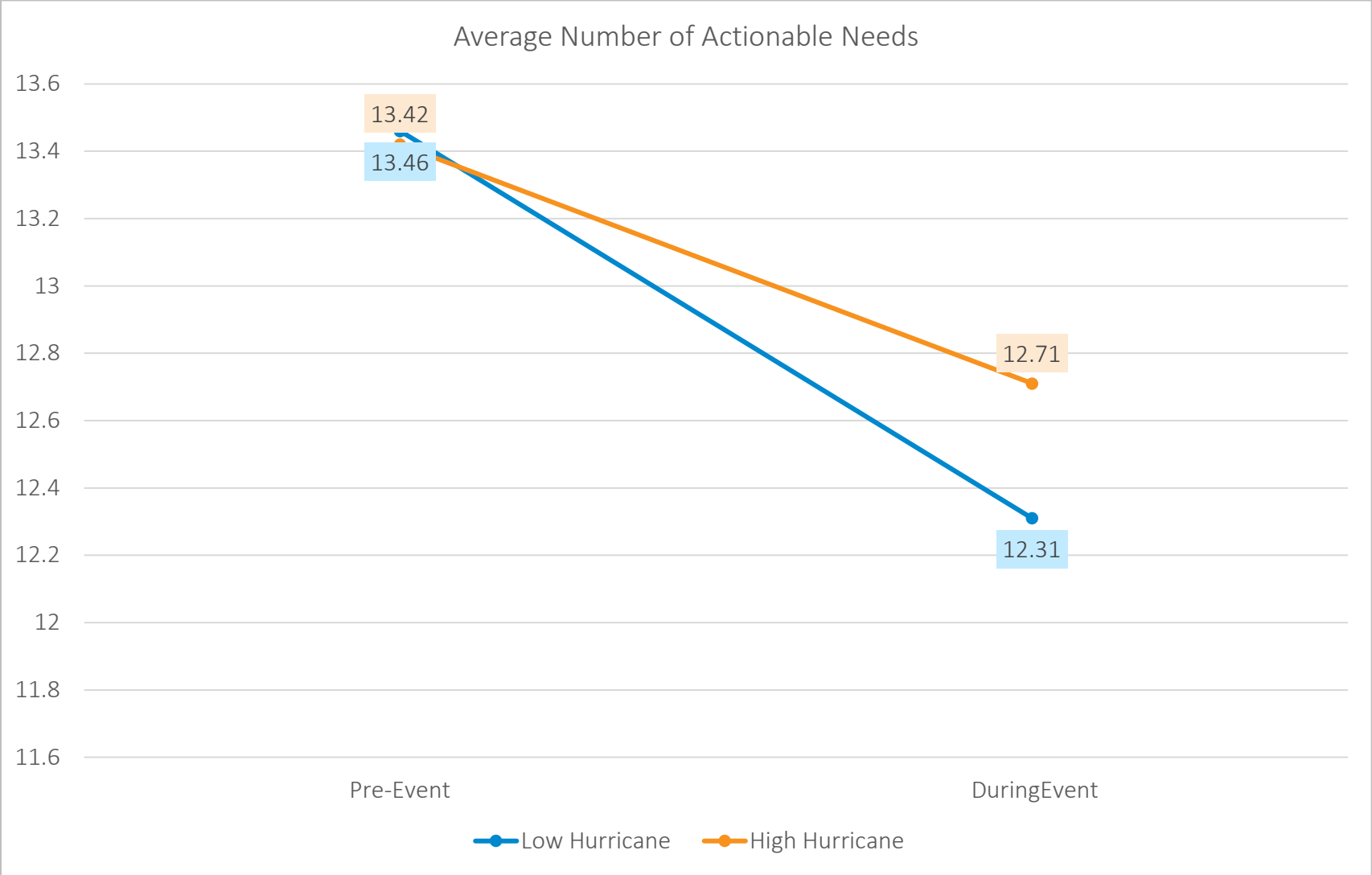
Low Impact: –1.89 needs resolved

High Impact: –2.27 needs resolved

Not statistically significant difference ($p > .05$).



Hurricane Results

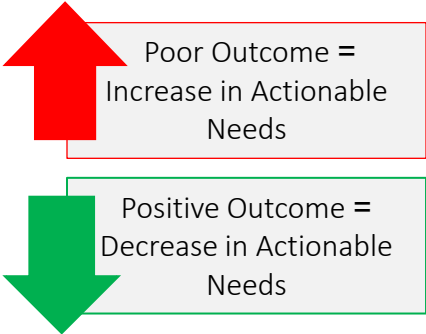


Change in the Average Number of Actionable Needs

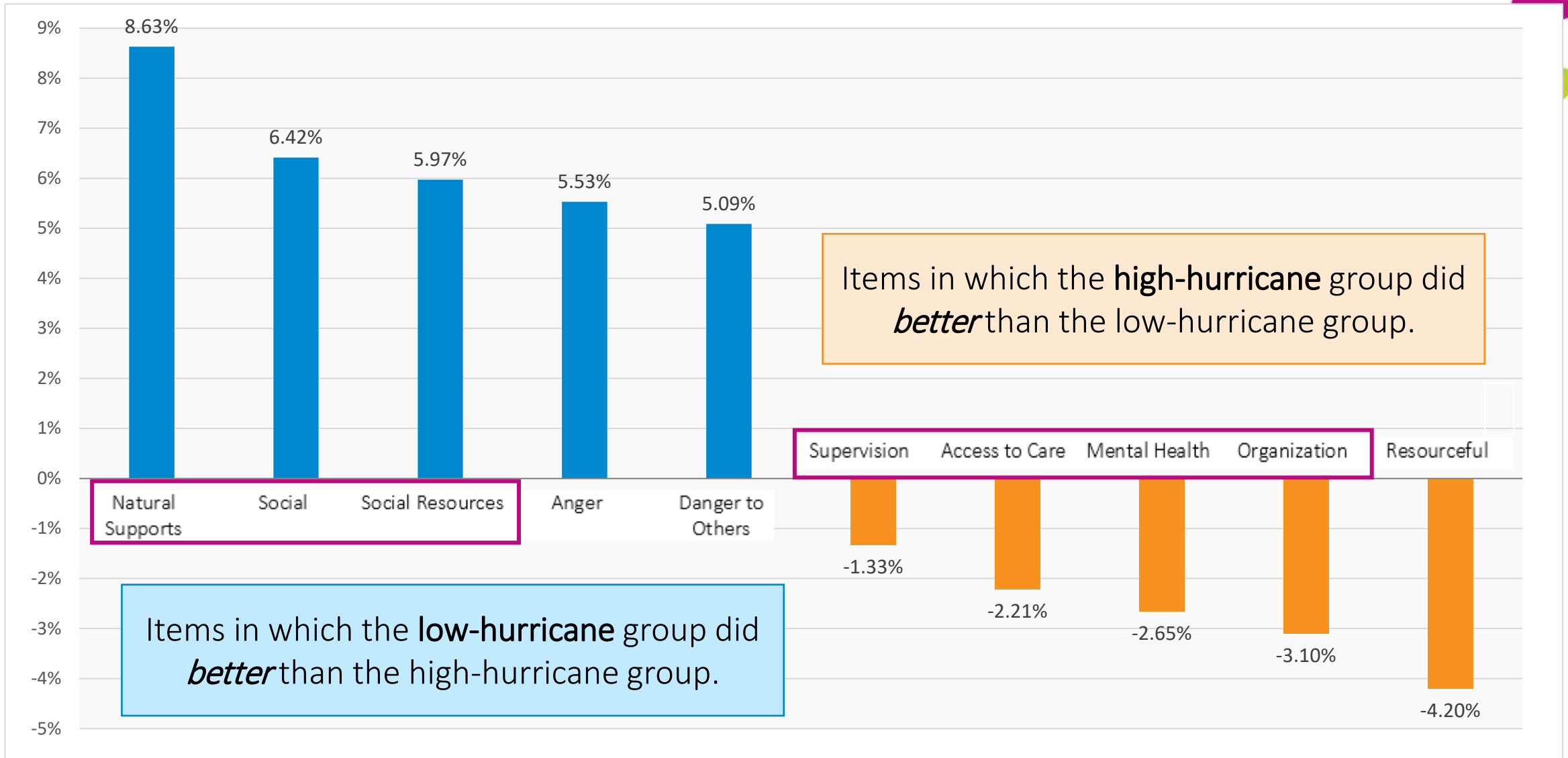
Low Impact: –1.15 needs resolved

High Impact: –0.71 needs resolved

Statistically significant difference ($p > .05$).



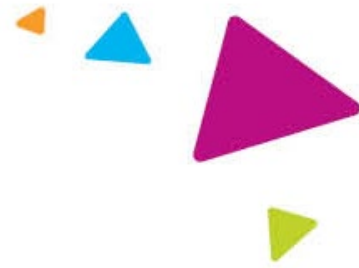
Difference Makers



The slide features a light gray horizontal band across the middle. Above and below this band are several triangles of various colors: blue, orange, and lime green. Some triangles are partially cut off by the edges of the slide.

Addressing Trauma

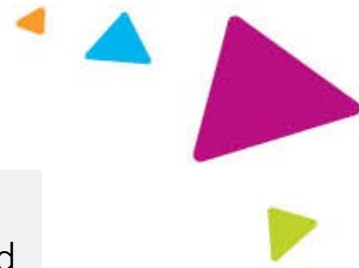
Interventions



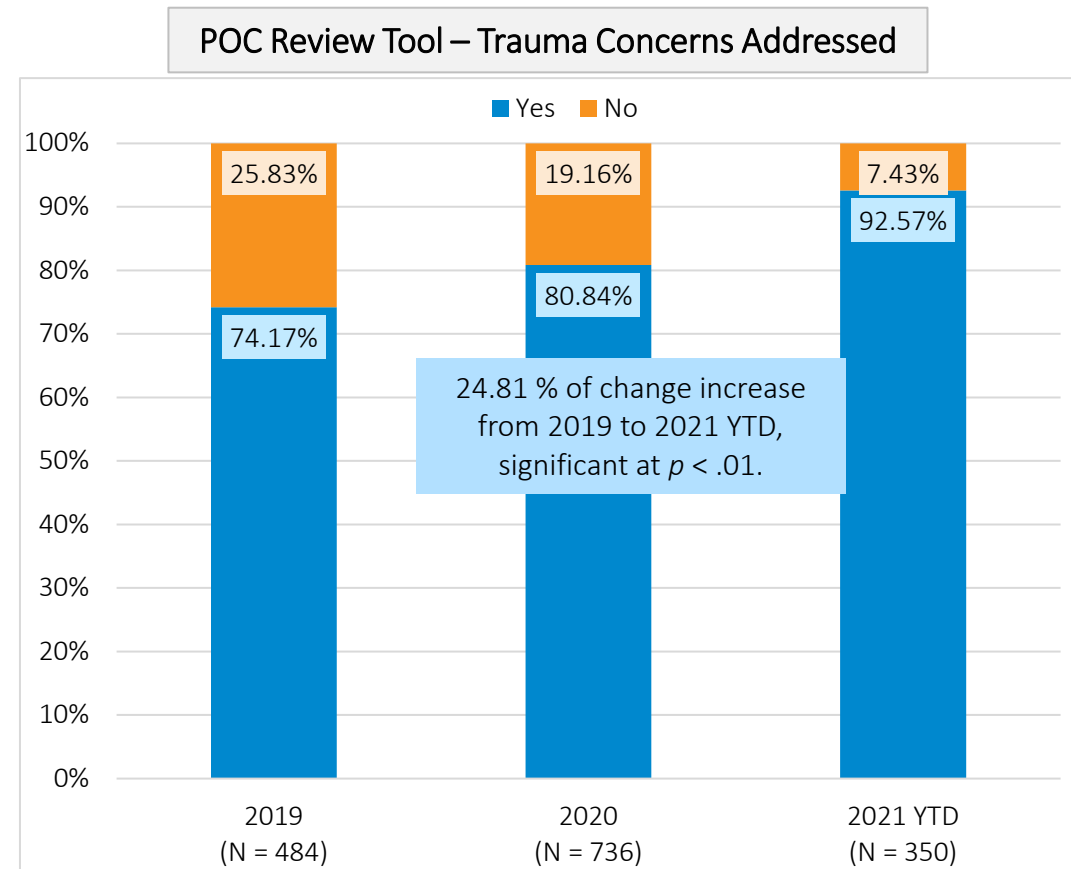
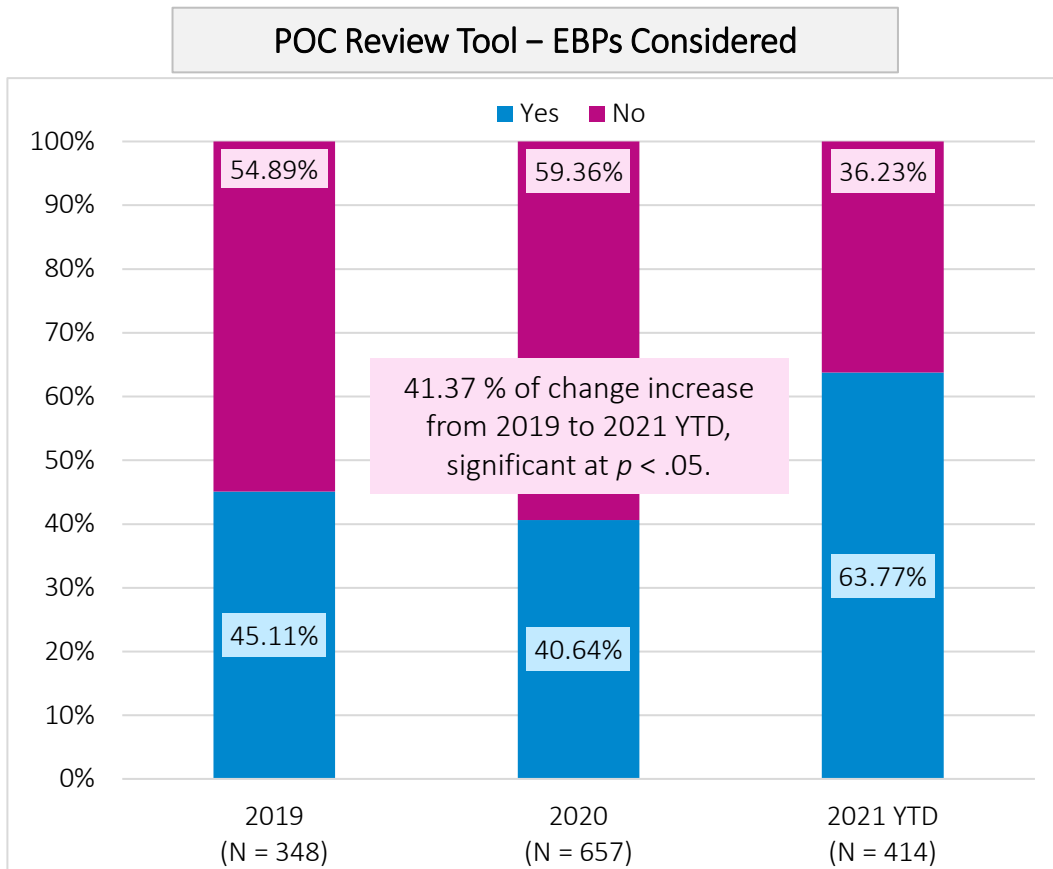
Current interventions that have been implemented by Magellan in 2021:

- *Adverse Childhood Experiences (ACEs)* screening training with ACE Master Trainer across state
- *Guided Workbook Therapy for CSoC members with Anxiety, Depression, Oppositional Behaviors, and Conduct Disorder* specifically created for wraparound facilitators, family support, and youth support
- Trauma-Informed Care (TIC) Clinical Practice Guidelines training and documentation review
- SAMHSA's Treatment Improvement Protocol (TIP) for Improving Cultural Competence and Trauma-Informed Care in Behavioral Health Services
- Clinical staffings b/w Magellan's MD/CD and WAA for youth with IP readmission within 60 days.
- Implementation of clinical procedures to support case management activities for WAAs when youth have trauma concerns, an IP admission, SI/HI risk, substance use issues, and developmental/educational issues.
- Standardized tool to monitor care plans for compliance with waiver requirements and best practices.

Wraparound Practice and Trauma



In 2019, Magellan implemented a standardized tool to monitor care plans for compliance with waiver requirements and best practices to ensure trauma concerns are addressed and the Child and Family Team (CFT) considers Evidenced-Based Practices (EBPs), when appropriate. Results from the youth with compliant plans are below.

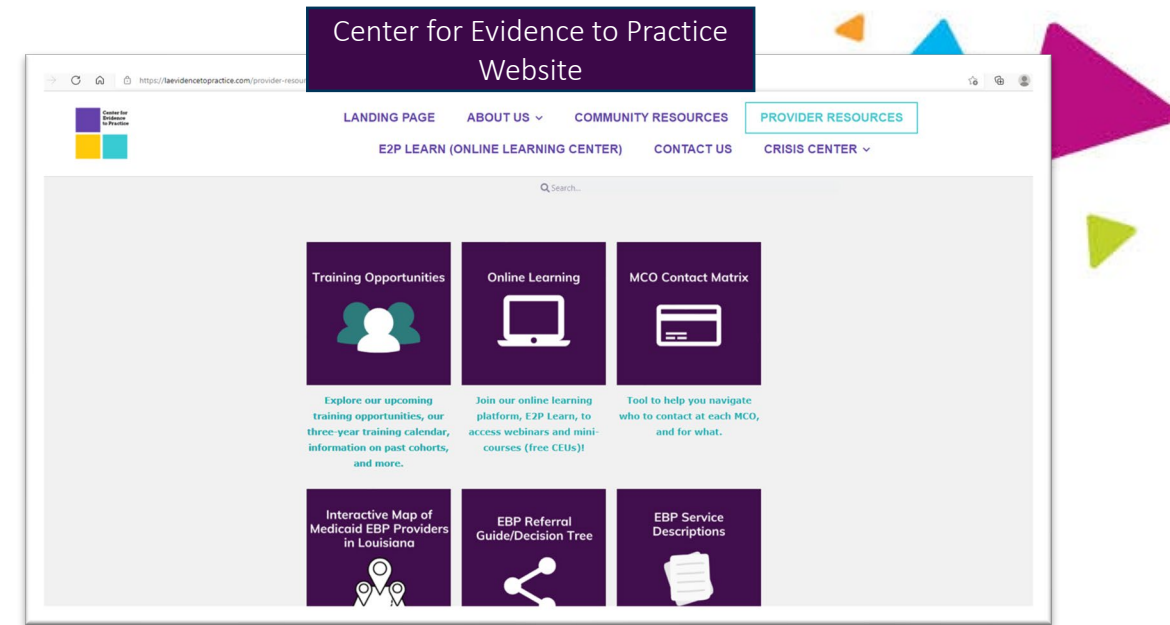


Trauma-informed Care Approach

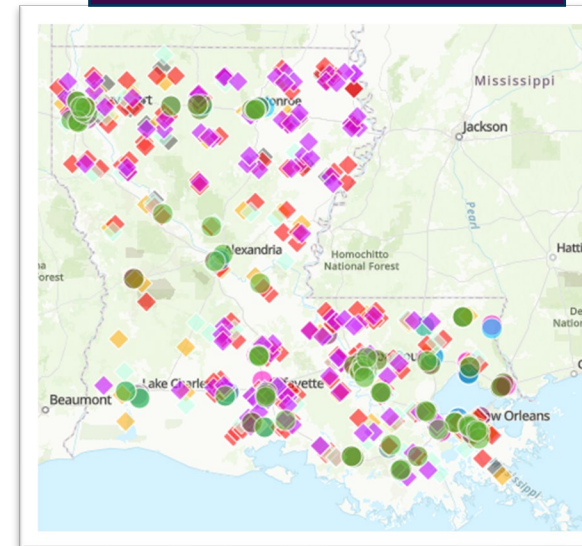


Center for Evidence to Practice Website

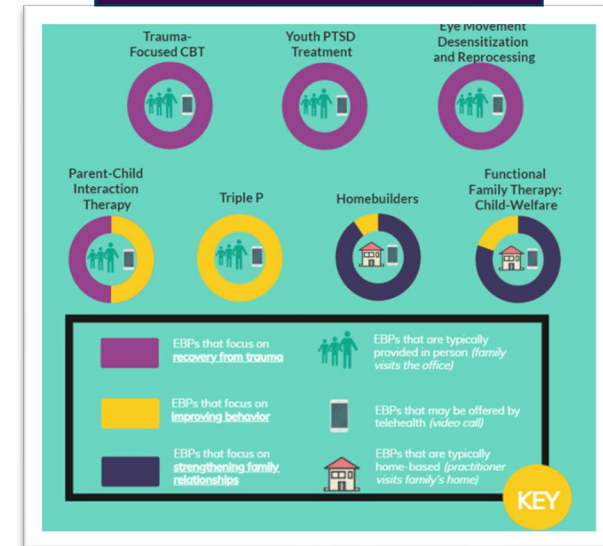
- In 2019, the Louisiana Department of Health partnered with the Louisiana State University Health and Sciences Center – School of Public Health to launch the Center for Evidence to Practice with a goal of expanding access of evidence-based behavioral health practices to communities across the state of Louisiana.
- Central to this initiative the development of a website that serves as link to online learning, training opportunities, EBP service descriptions, referral guides, and maps allowing the user to locate Medicaid providers that are trained in evidence-based programs.



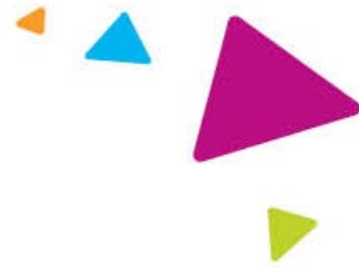
Interactive Map of Medicaid Providers in Louisiana



EBP Referral Guide / Decision Tree



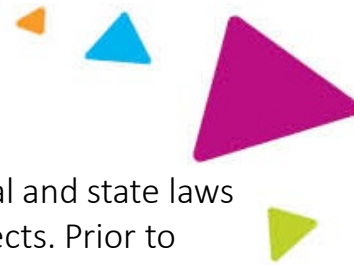
Planned Interventions



Implementation of First Annual CSoC Hurricane Preparedness Month – May 2022

- Provide online Webinars/Training Resources to support development of family preparedness and provider disaster plans through e-mail blasts, provider all-calls, and monthly WAA calls.
- WAA/FSO work with families to develop family preparedness plan in May/June 2022.
- Magellan WAA/FSO Coordinators provide technical assistance on development of plans during monthly visits.
- Facilitators and peer specialist review/refine plans during monthly CFT meetings throughout hurricane season

Presenters



Wendy Bowlin, MBA, MS, LPC is responsible for implementing the CSoC quality program, which includes ensuring compliance with federal and state laws and contract requirements, monitoring quality of care, patient safety, and program outcomes, and overseeing quality improvement projects. Prior to joining Magellan, Ms. Bowlin primarily worked with children and families in both the inpatient and outpatient setting. Ms. Bowlin is a Licensed Professional Counselor and holds a B.A. in Psychology from the University of Mississippi, a M.A. Counseling Psychology from Louisiana State University in Shreveport, and a M.B.A. from the University of Southeastern Louisiana.

Joseph Shayka, MA, BS attended undergraduate at the University of Pittsburgh for Anthropology, Biology and English Writing. He earned his master's degree at Washington University in St. Louis for Physical Anthropology. He also had a teaching certificate in Mathematics 7-12. In between and since he has worked as a statistical data analyst and computer programmer for various entities, both in the university and private sectors. When not talking with computers, he can be found mapping and orienteering in the state forests of Upstate New York.

Amanda M. Favrot, MS, LPC, is a Quality Project Manager for the CSoC Program. She specializes in overseeing, training, and supporting mental health professionals who evaluate CSoC's high-risk youth population, as well as developing novel approaches to monitoring and quantifying the quality and efficacy of service delivery. Prior to this role, she served as Magellan of Louisiana's Independent Evaluator for five years, during which she reviewed all CANS and psychosocial assessments completed for youth enrolled in CSoC across the state of Louisiana. Mrs. Favrot is a Licensed Professional Counselor and holds a B.A. in Psychology from Centenary College, a M.S. in Counseling Psychology from Louisiana State University in Shreveport and is currently certified as a Trainer of Trainers through the Praed Foundation.

Barbara Ann Dunn, LCSW, ACSW, is Senior Director, Children's Healthcare at Magellan Healthcare and is responsible for proposing, implementing, and evaluating programs across behavioral health public markets. Before joining Magellan, Barbara worked in early childhood and alternative education, child welfare, faith-based organizations, and community mental health. She holds a master's degree in social service administration from the University of Chicago and a bachelor's degree in psychology from Binghamton University. A veteran of many TCOM conferences, Barbara served as the 2020 TCOM Conference Program Chair

References

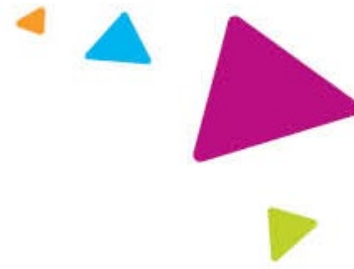


- Centers for Disease Control and Prevention (n.d.). United States COVID-19 Cases and Deaths by State over Time. Centers for Disease Control and Prevention, covid.cdc.gov accessed June 21, 2021
- Centers for Disease Control and Prevention/ Agency for Toxic Substances and Disease Registry/ Geospatial Research, Analysis, and Services Program. CDC/ATSDR Social Vulnerability Index 2018 Database Louisiana. https://www.atsdr.cdc.gov/placeandhealth/svi/data_documentation_download.html. Accessed on June 15, 2021.
- Center for Evidence to Practice. Retrieved: <https://laevidencetopractice.com/>
- COVID Mapping Project (2021). Louisiana and Alaska. Standard Co. <https://www.covidmappingproject.com/us-counties>
- Dym Bartlett, J. and Vivrett, R. (2020) Ways to Promote Children's Resilience to the COVID-19 Pandemic. <https://www.childtrends.org/>
- Federal Emergency Management Agency (n.d.). OpenFEMA Data sets. FEMA.gov accessed June 21, 2021.
- Federal Emergency Management Agency (2021). Louisiana Severe Storms, Tornados, and Flooding. FEMA, 4606-DR-LA. FEMA.gov
- GeoAccess reports. Quest Analytics Suite, version 2021.1
- Ho DE, Imai K, King G, Stuart EA (2011). "MatchIt: Nonparametric Preprocessing for Parametric Causal Inference." *Journal of Statistical Software*, **42**(8), 1–28. <https://www.jstatsoft.org/v42/i08/>.
- https://www.nola.com/news/hurricane/article_d9697294-16c1-11eb-abb3-2737fc665d10.html
- Louisiana Department of Insurance. (n.d.) Hurricane Call data from Delta, Laura, and Zeta. Public Data Request, 2021. <http://www.idi.la.gov/>
- Masten, A. S., & Motti-Stefanidi, F. (2020). Multisystem Resilience for Children and Youth in Disaster: Reflections in the Context of COVID-19. *Adversity and resilience science*, 1–12. Advance online publication. <https://doi.org/10.1007/s42844-020-00010-w>
- NYTimes database on Github: <https://github.com/nytimes/covid-19-data>
- R Core Team (2021). R: A language and environment for statistical computing. R Foundation for Statistical Computing, Vienna, Austria. URL <https://www.R-project.org/>.
- Stark, A.M., White, A. E., and Rotter, N.S. (2020). Shifting From Survival to Supporting Resilience in Children and Families in the COVID-19 Pandemic: Lessons for Informing U.S. Mental Health Priorities. American Psychological Association, Vol. 12, No. S1, S133–S135 ISSN: 1942-9681 <http://dx.doi.org/10.1037/tra0000781>
- Substance Abuse and Mental Health Services Administration. Behavioral Health Conditions in Children and Youth Exposed to Natural Disasters. Supplemental Research Bulletin. 2018. <https://www.samhsa.gov/sites/default/files/srb-childrenyouth-8-22-18.pdf>
- Wen, L.S., and Sadeghi, N.B. (2020). Addressing Racial Health Disparities In The COVID-19 Pandemic: Immediate And Long-Term Policy Solutions. July 20, 2020. <https://www.healthaffairs.org/doi/10.1377/hblog20200716.620294/full/>

THANK YOU!



Confidentiality statement



By receipt of this presentation, each recipient agrees that the information contained herein will be kept confidential and that the information will not be photocopied, reproduced, or distributed to or disclosed to others at any time without the prior written consent of Magellan Health, Inc.

The information contained in this presentation is intended for educational purposes only and is not intended to define a standard of care or exclusive course of treatment, nor be a substitute for treatment.