



Louisiana Department of Health
Informational Bulletin 12-16
Revised May 12, 2026

Algorithm for Auto-Assignment to a Health Plan for Specialized Behavioral Health Services

Note: Effective April 1, 2026, UnitedHealthcare's (UHC) contract with the Louisiana Department of Health (LDH) ended, and all members assigned to UHC were reassigned to other managed care organizations (MCO). For additional details regarding the UHC transition, refer to [Informational Bulletin 26-3](#).

See pages 2 and 3 for flowchart depicting auto-assignment. The legend below has been provided for reference.

Legend:

AA – Auto Assignment

BH – Behavioral Health

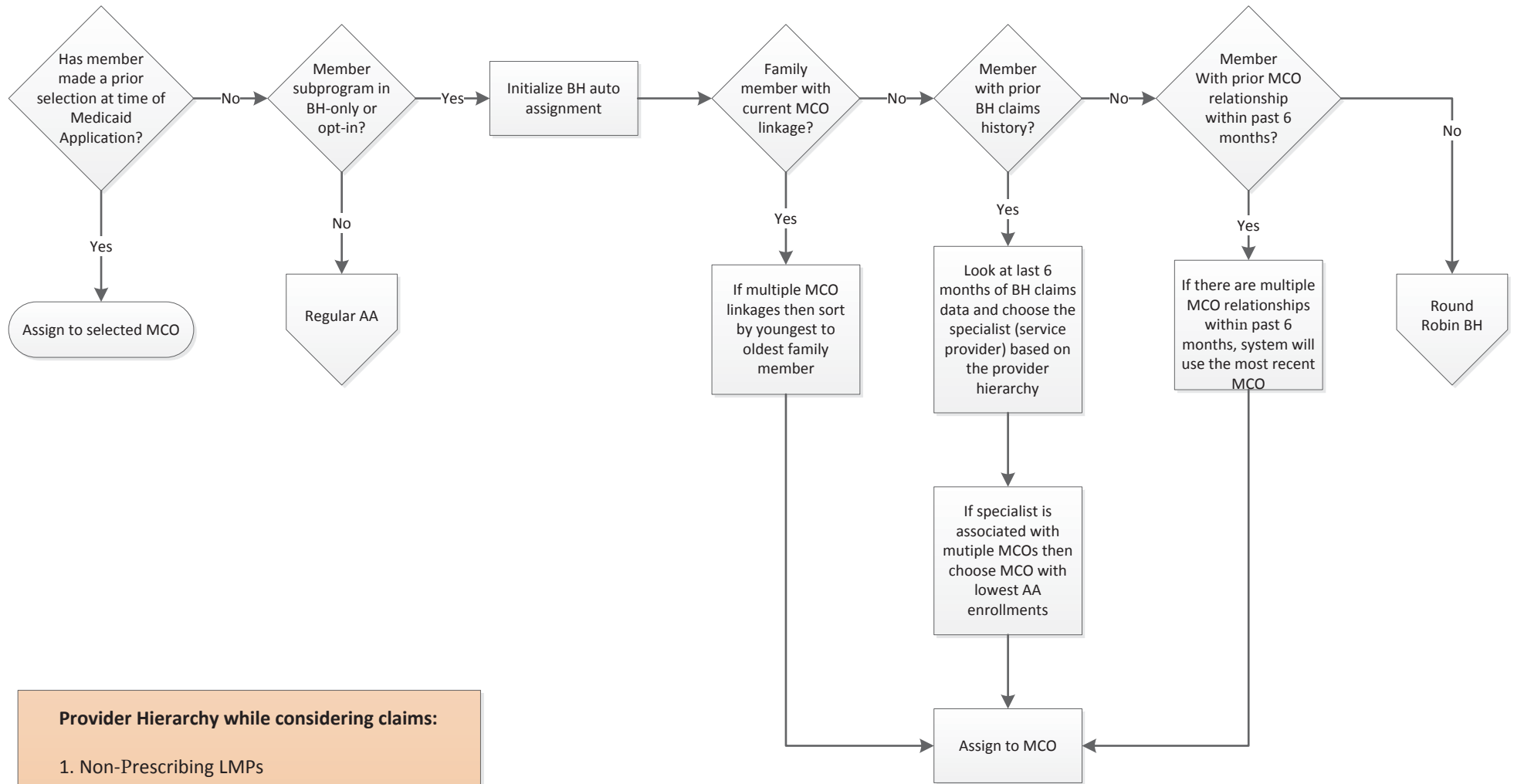
LHC – Louisiana Healthcare Connections

LMHP – Licensed Mental Health Professional

MCO – Managed Care Organization

~~UHC – UnitedHealthcare~~

Flowchart Depicting the Specialized Behavioral Health Auto-Assignment Process Effective 12/1/15

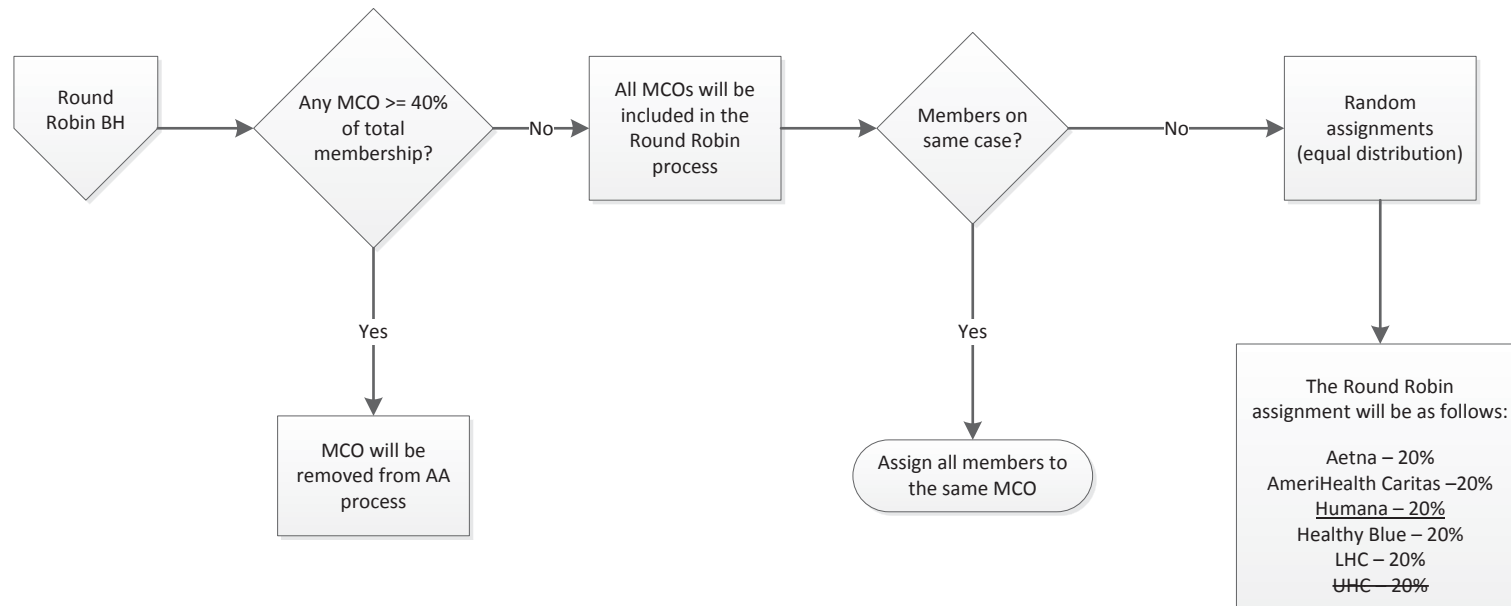


Provider Hierarchy while considering claims:

1. Non-Prescribing LMPs
2. Psychiatrist
3. Mental Health Rehab Agency
4. Medical Psychologist
5. Residential Programs
6. Substance Use Residential
7. Clinics
8. Other BH Specialist

Note: BH auto-assignment will start running daily starting on 12/01/15. Before 12/01/15 there will be two runs on 11/07/2015 and on 11/27/2015.

Flowchart Depicting the Specialized Behavioral Health Auto-Assignment Process Effective 12/1/15



NOTES:

- * Separate counter will be used for the BH AA random assignments
- * Equal distribution of assignments to all plans