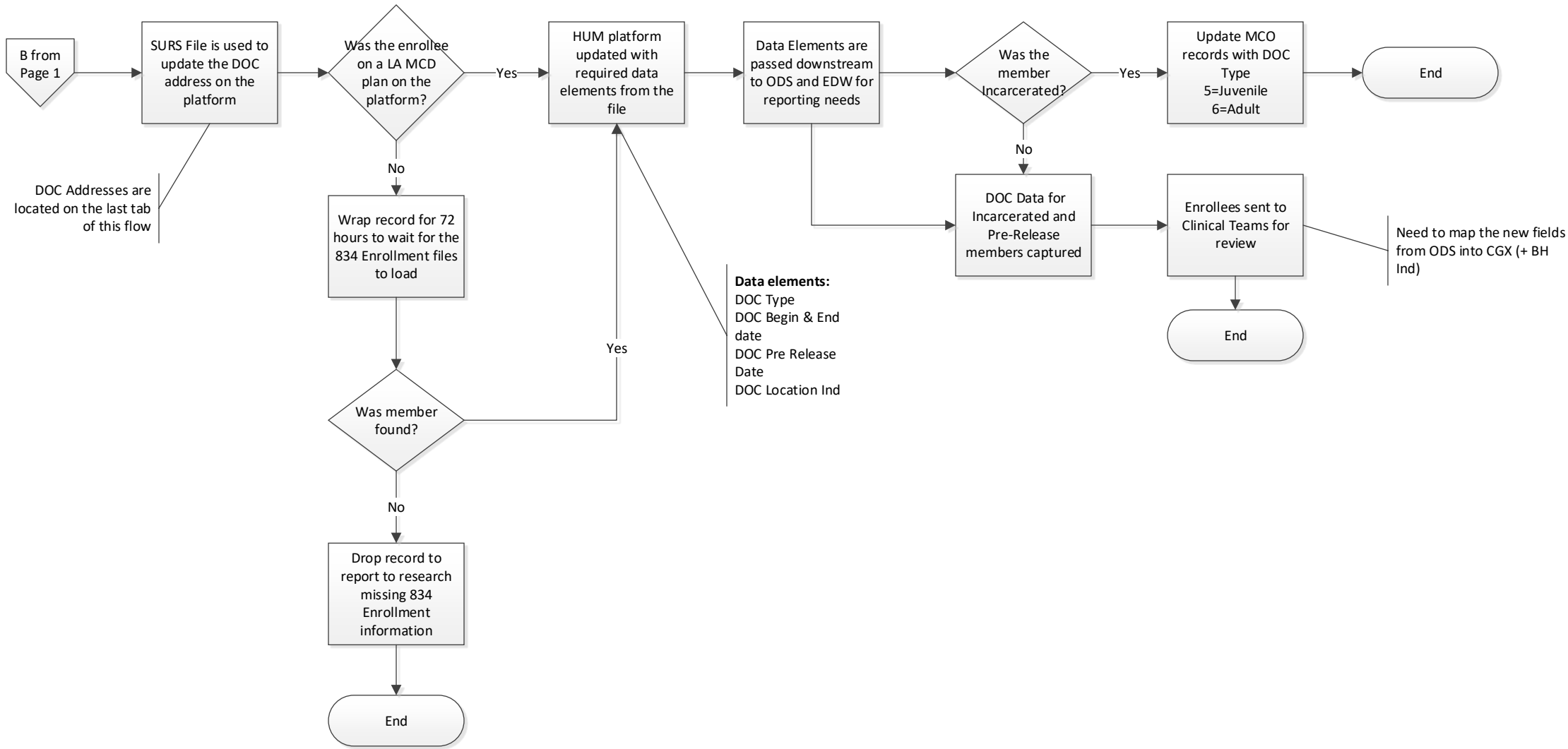


SURS File



Revised: October 16, 2017		
Phase 1 State Facilities		
DOC Location Code	Facility	Mailing Address
6100, 6105, 6150	RAYMOND LABORDE CORRECTIONAL CENTER	Raymond Laborde Correctional Center Attn: Corrections Transition Specialist 1630 Prison Road Cottonport, LA 71327
6200, 6208	ALLEN CORRECTIONAL CENTER	Allen Correctional Center Attn: Transition Specialist 3751 Lauderdale Woodyard Road Kinder, La 70648
6400, 6405, 6406, 6407, 6408, 6450	LOUISIANA STATE PENITENTIARY	Louisiana State Penitentiary (Angola) Attn: Corrections Transition Specialist Department 17544 Tunica Trace Angola, LA 70712
6600, 6601, 6603, 6605, 6607, 6608, 6609, 6610, 6611, 6612, 6613, 6614, 6615, 6616, 6650 6657	LOUISIANA CORRECTIONAL INSTITUTE FOR WOMEN	Louisiana Correctional Institute for Women Attn: Mental Health Department 7205 Highway 74 St. Gabriel, LA 70776
6700, 6701, 6703, 6705, 6706, 6707, 6750 6756, 6757	DIXON CORR INST	Dixon Correctional Center Attn: Transition Specialist Department Post Office Box 788 Jackson, LA 70748
6800, 6802, 6805, 6807, 6808, 6809, 6810 ,6820, 6850, 6857, 6858	ELAYN HUNT CORRECTIONAL CENTER	Elayn Hunt Correctional Center Attn: Mental Health Department 6925 Highway 74 St. Gabriel, LA 70776
6900, 6905, 6906, 6907, 6908, 6909, 6910, 6911, 6912, 6913, 6914, 6915, 6916, 6917, 6950	DAVID WADE CORRECTIONAL CENTER	David Wade Correctional Center Attn: Mental Health Department 670 Bell Hill Road Homer, LA 71040
7000, 7005, 7050	B.B. RAYBURN CORRECTIONAL CENTER	B.B. Rayburn Correctional Center Attn: Re-Entry Department 27268 Hwy. 21 North Angie, LA 70426

Phase 2, Part A Regional Reentry Centers		
DOC Location Code	Facility	Mailing Address
5474,5499,54AQ	Northeast Regional Reentry (Madison Men)	Northeast Regional Reentry Attn: Transition Specialist 1005 W. Green St. Tallulah, LA 71282
549P, 549Q	LA Transition Center for Women	LA Transition Center for Women Attn: Transition Specialist
5496	Central Regional Reentry	Central Regional Reentry Attn: Transition
54BF	Capital Area Regional Reentry	Capital Area Regional Reentry Attn: Transition
5438	Southeast Regional Reentry	Southeast Regional Reentry Attn: Transition
5428	Southwest Central Regional Reentry	Southwest Central Regional Reentry Attn: Transition Specialist Lafayette, LA 70506
5491	Jefferson Parish Regional Reentry	Jefferson Parish Regional Reentry Attn: Transition Specialist 388 Natures Acres Road Winnsboro, LA 71295
5452	Florida Parishes Regional Reentry	Florida Parishes Regional Reentry Attn: Transition Specialist 1200 Champagne St. Covington, LA 70433
5409	Northwest Regional Reentry (Caddo)	Northwest Regional Reentry Attn: Transition Specialist 1101 Forum Drive Shreveport, La 71107
6209	Allen Correctional Reentry	Attn: Transition Specialist