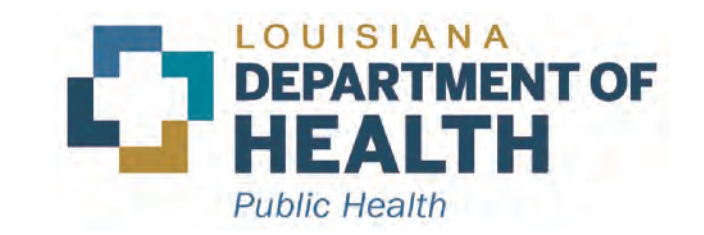


May August 2026 Re-Classification Line

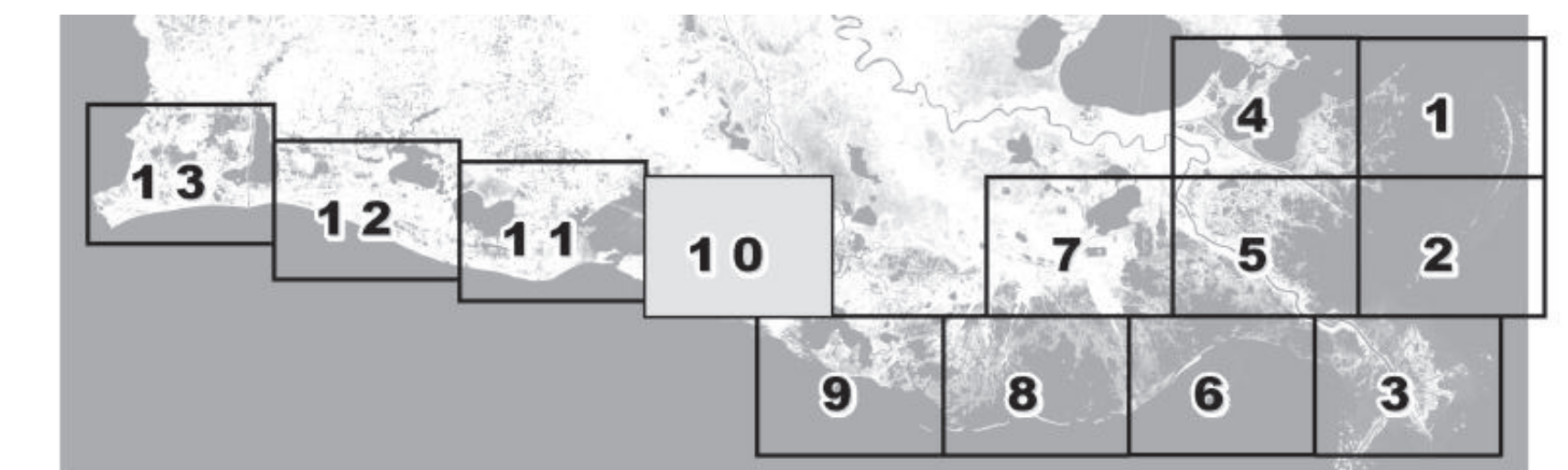


Louisiana Department of Health
Office of Public Health
Molluscan Shellfish Program

Refrigerated Requirements for Shellstock Harvested for Raw Consumption

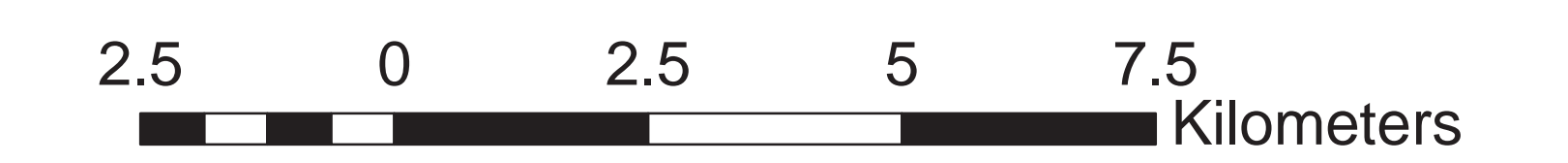
Basin Descriptions
 Barataria Basin - Mississippi River west to Bayou Lafourche
 Pontchartrain Basin - Mississippi state line to the Mississippi River
 Terrebonne Basin - Bayou Lafourche to the Atchafalaya River
 Vermilion Basin - Growing waters south to the South West Pass and Marsh Island to defined federal waters and from Pt. Chevert to Freshwater Bayou Canal

Max Hrs from Harvest	36 Hrs	8 Hrs	1 Hr
Basin 2	Jan-Feb Dec	Mar-Apr Nov	May-Oct
Basin 3	Jan-Feb Dec	Mar-Apr Nov	May-Oct
Basin 4	Jan-Feb Dec	Mar-Apr Nov	May-Oct
Basin 6	Jan-Feb Dec	Mar-Apr Nov	May-Oct
Basin 12	Jan-Feb Dec	Mar-Apr Nov	May-Oct



Area Lines
 Closure Area

Prohibited Areas



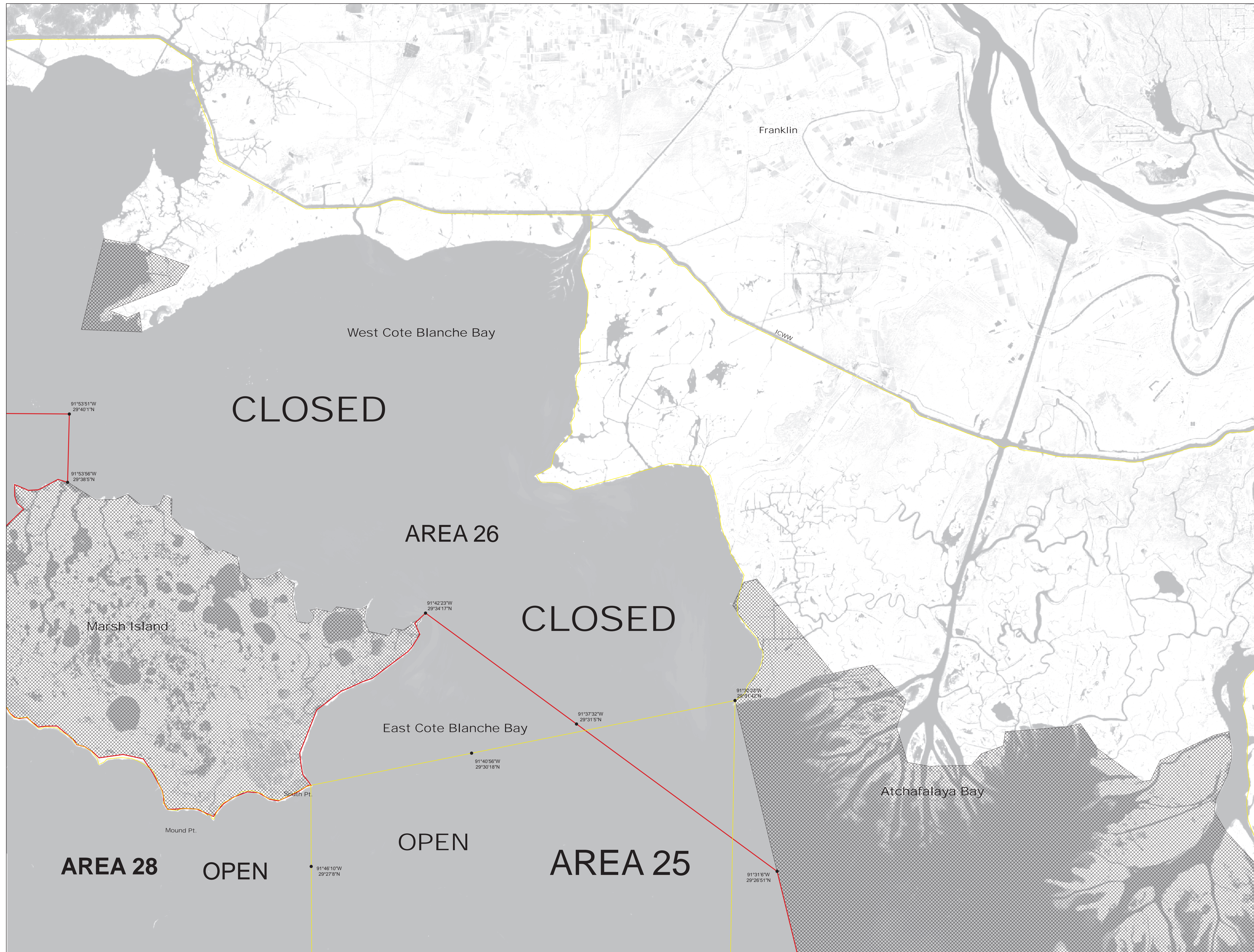
Scale 1:72,000



50 yard radius closure from point of waste discharge exists for all man-made habitable structures.

Background imagery provided by USGS EarthExplorer and processed by Quantitative Ecological Services, Inc.
Date of Imagery 2014.

Not for navigational purposes



AREA 28

OPEN

OPEN

AREA 25

AREA 26

CLOSED

CLOSED

Franklin

West Cote Blanche Bay

ICWW

Marsh Island

East Cote Blanche Bay

Atchafalaya Bay

Mound Pt.

South Pt.

91°53'51"W
29°40'1"N

91°53'56"W
29°38'5"N

91°42'23"W
29°34'17"N

91°37'32"W
29°31'5"N

91°40'56"W
29°30'18"N

91°46'10"W
29°27'8"N

91°31'6"W
29°26'51"N

91°32'38"W
29°01'42"N