

May August 2026 Re-Classification Line

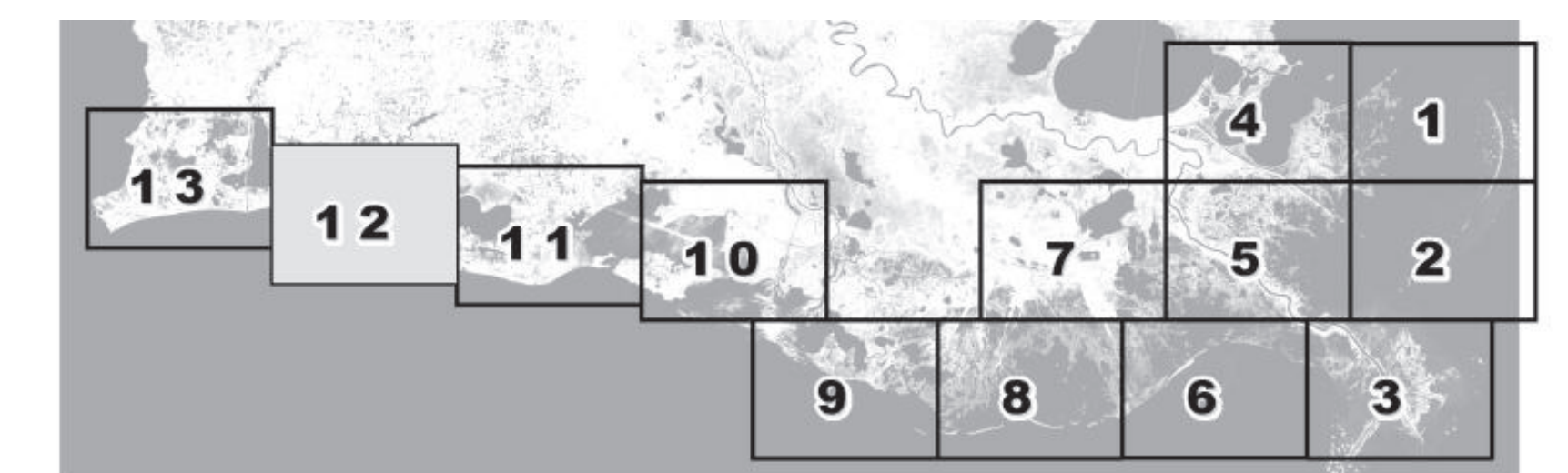


Louisiana Department of Health
Office of Public Health
Molluscan Shellfish Program

Refrigerated Requirements for Shellstock Harvested for Raw Consumption

Basin Descriptions
 Barataria Basin - Mississippi River west to Bayou Lafourche
 Pontchartrain Basin - Mississippi state line to the Mississippi River
 Terrebonne Basin - Bayou Lafourche to the Atchafalaya River
 Vermilion Basin - Growing waters south to the South West Pass and Marsh Island to defined federal waters and from Pt. Chevert to Freshwater Bayou Canal

Max Hrs from Harvest	36 Hrs	8 Hrs	1 Hr
Basin 2	Jan-Feb Dec	Mar-Apr Nov	May-Oct
Basin 3	Jan-Feb Dec	Mar-Apr Nov	Oct
Basin 4	Jan-Feb Dec	Mar-Apr Nov	May-Oct
Basin 6	Jan-Feb Dec	Mar-Apr Nov	May-Oct
Basin 12	Jan-Feb Dec	Mar-Apr Nov	May-Oct



Area Lines
 Closure Area

Prohibited Areas

2.5 0 2.5 5 7.5 Kilometers

1 0 1 2 3 Miles

Scale 1:72,000



50 yard radius closure from point of waste discharge exists for all man-made habitable structures.

Background imagery provided by USGS EarthExplorer and processed by Quantitative Ecological Services, Inc.
Date of Imagery 2014.

Not for navigational purposes



ALL OFFSHORE WATERS FROM THE FRESH WATER CANAL TO THE LOUISIANA-TEXAS STATE LINE IS CONSIDERED UNCLASSIFIED AND THEREFORE CLOSED TO THE HARVEST OF ALL MOLLUSCAN SHELLFISH