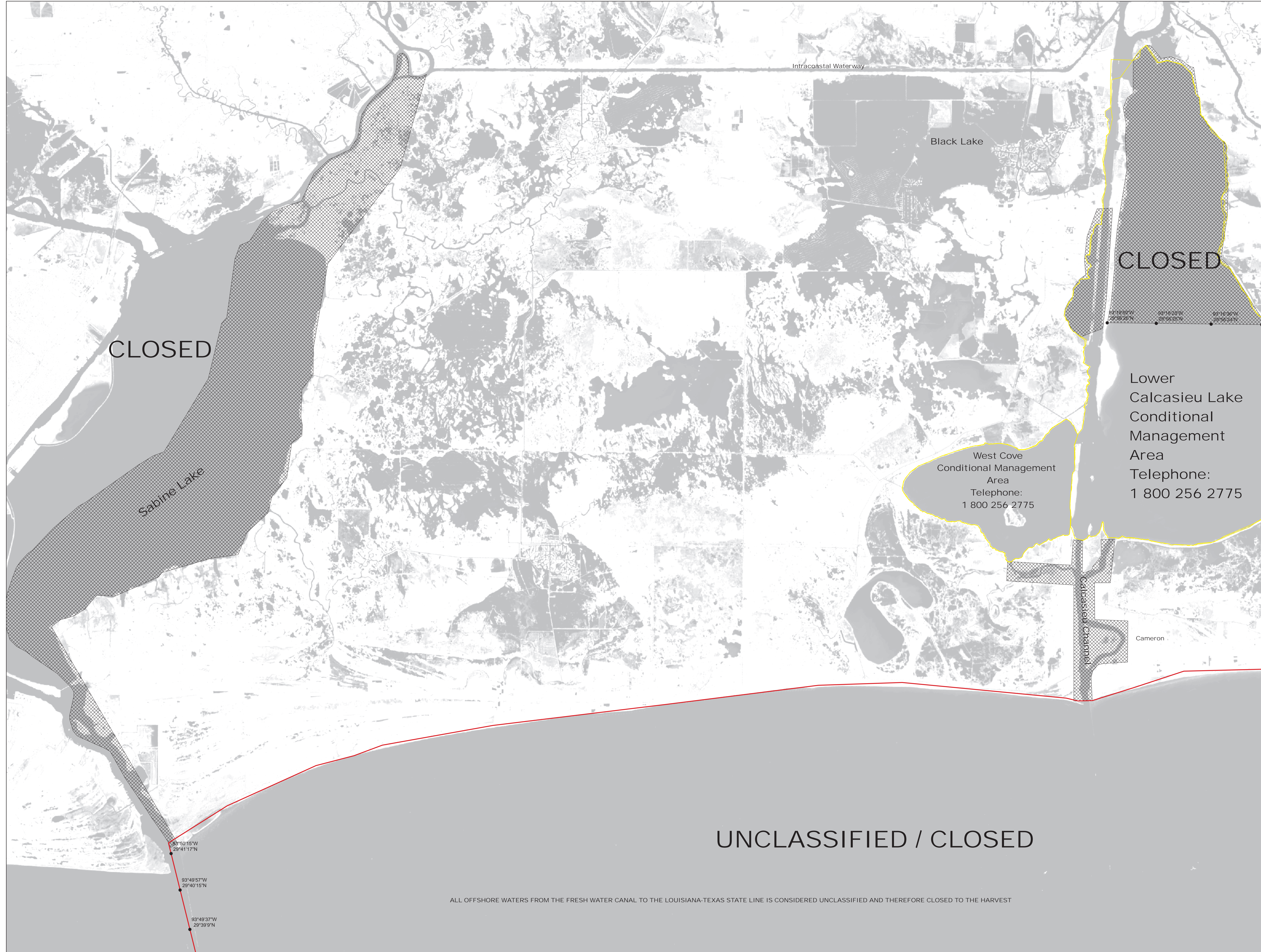


# May August 2026 Re-Classification Line



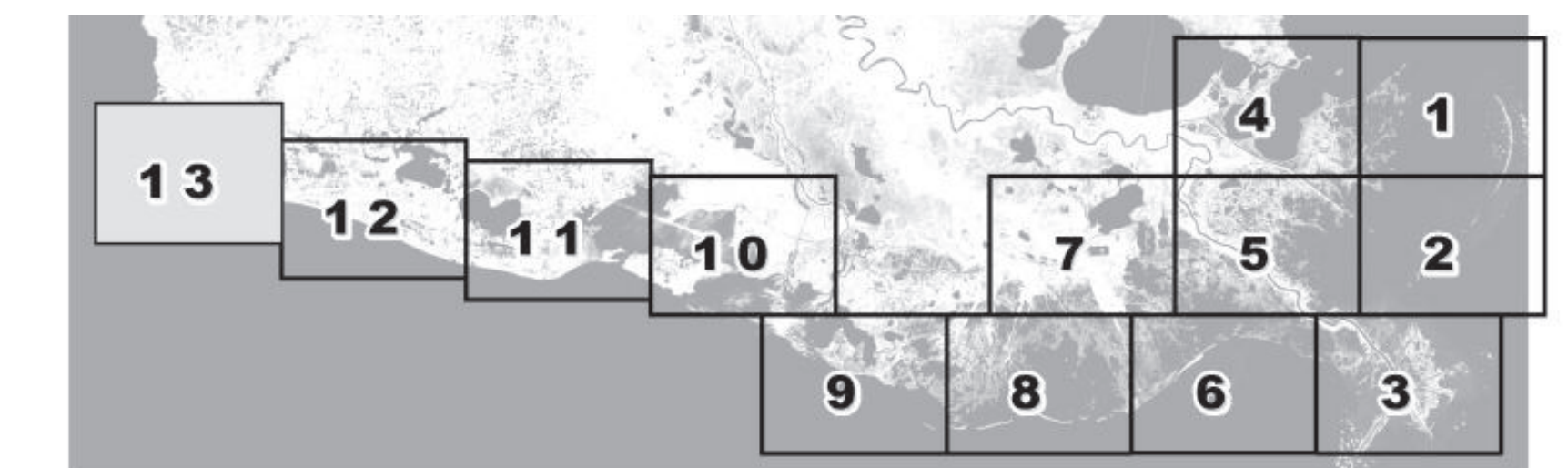
Louisiana Department of Health  
Office of Public Health  
Molluscan Shellfish Program



### Refrigerated Requirements for Shellstock Harvested for Raw Consumption

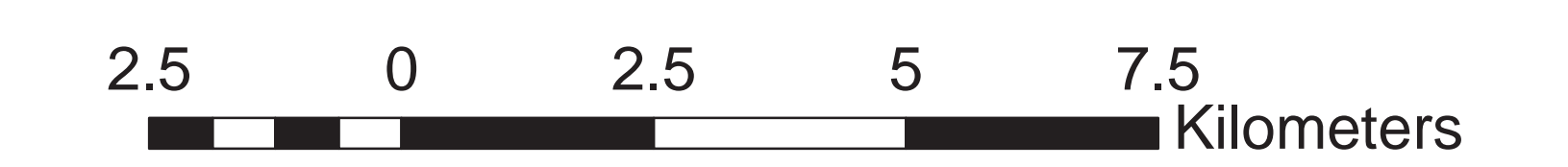
**Basin Descriptions**  
 Barataria Basin - Mississippi River west to Bayou Lafourche  
 Pontchartrain Basin - Mississippi state line to the Mississippi River  
 Terrebonne Basin - Bayou Lafourche to the Atchafalaya River  
 Vermilion Basin - Growing waters south to the South West Pass and Marsh Island to defined federal waters and from Pt. Chevert to Freshwater Bayou Canal

Max Hrs from Harvest	36 Hrs	8 Hrs	1 Hr
Basin 2	Jan-Feb Dec	Mar-Apr Nov	May-Oct
Basin 3	Jan-Feb Dec	Mar-Apr Nov	Oct
Basin 4	Jan-Feb Dec	Mar-Apr Nov	May-Oct
Basin 6	Jan-Feb Dec	Mar-Apr Nov	May-Oct
Basin 12	Jan-Feb Dec	Mar-Apr Nov	May-Oct



Area Lines  
 Closure Area

Prohibited Areas



Scale 1:72,000



50 yard radius closure from point of waste discharge exists for all man-made habitable structures.

Background imagery provided by USGS EarthExplorer and processed by Quantitative Ecological Services, Inc. Date of Imagery 2014.

Not for navigational purposes

UNCLASSIFIED / CLOSED

ALL OFFSHORE WATERS FROM THE FRESH WATER CANAL TO THE LOUISIANA-TEXAS STATE LINE IS CONSIDERED UNCLASSIFIED AND THEREFORE CLOSED TO THE HARVEST

CLOSED

CLOSED

Lower Calcasieu Lake  
Conditional Management Area  
Telephone:  
1 800 256 2775

West Cove  
Conditional Management Area  
Telephone:  
1 800 256 2775

Sabine Lake

Black Lake

Intracoastal Waterway

Calcasieu channel

Cameron

93°50'15"W  
29°41'17"N  
93°49'57"W  
29°40'15"N  
93°49'37"W  
29°39'39"N