



# Basics of the Infection Preventionist Role in Long Term Care Settings

Jennifer Bruney, MSN, RN  
Allison Talley, BSN, RN

6/25/2025

# Objectives:

- Identify 2 components of the Infection Preventionist's (IP) role in Long Term Care Settings
- Differentiate between regulations (laws) and guidelines (recommendations)
- Identify 3 resources for IP orientation and training
- Discuss professional development opportunities for the IP

# Poll Question #1

How long have you been an IP?

- A. Less than 1 year
- B. 1-3 years
- C. 3-5 years
- D. 5 plus years

# The Role of the IP, in History

- Historically, LTC facilities assigned infection prevention roles and responsibilities without consideration of interest, training, or experience
- A study in 2017 indicated that fewer than 10 percent of IPs in nursing homes and skilled nursing facilities had received specialized training and/or achieved infection prevention certification
- A transition from talking about Infection Control to Infection **Prevention** and Control  
Focusing on prevention promotes patient safety and helps healthcare workers stay healthy

# Who Are Infection Preventionists?

Infection preventionists (IPs) are specially trained professionals, leaders, educators, and collaborators from diverse backgrounds, including nursing, public health, laboratory, and allied health fields.

**IPs work on the frontlines to prevent infections in:**

## HEALTHCARE SYSTEMS AND HOSPITALS

Acute care to  
critical access



## LONG-TERM CARE FACILITIES

Nursing homes to  
behavioral health



## CLINICS

Ambulatory  
surgery to  
dialysis



## HEALTH AGENCIES

Public health  
to government  
agencies



## NON-HEALTHCARE SETTINGS

Schools to  
correctional and  
detention facilities



## INDUSTRY SETTINGS

Manufacturers  
to supply chain  
companies



# What Do IPs Do?

IPs promote a culture of safety and impact the health of patients, workers, staff, and community members. Their advocacy and work extend throughout the organization and the community.



APIC ©2022 [APIC.ORG](http://apic.org)

<http://apic.org/who-are-infection-preventionists>

# Who Do IPs Work With?



## HEALTHCARE LEADERSHIP

Senior Leaders, managers, and supervisors

## HEALTHCARE DEPARTMENTS

### Clinical:

Physicians, nurses, therapists, pharmacists

### Operational:

Food and nutritional services, environmental services, supply chain, facility maintenance professionals

## PUBLIC HEALTH

Local, state, federal



## COMMUNITY PARTNERS

First responders, regional healthcare coalitions, healthcare associations

## REGULATORY AGENCIES

Centers for Medicare & Medicaid Services (CMS), Occupational Safety and Health Administration (OSHA), Accrediting organizations

## PROFESSIONAL ORGANIZATIONS

Association for Professionals in Infection Control and Epidemiology (APIC), Society for Healthcare Epidemiology of America (SHEA), Infectious Diseases Society of America (IDSA)

## INDUSTRY

Medical device manufacturers, medical equipment and supply vendors, industry clinical/science liaisons

<http://apic.org/who-are-infection-preventionists>

# The IP should

- Review scope of responsibilities document/job description
  - Sample job description [IP-Job-Description-web-version.pdf](#)
- Review the facility's written infection prevention and control policies
  - Policies should be easily accessible, current, and evidence-based
  - Current regulatory requirements
    - Regulations
    - Guidelines
- Establish a point of contact list
  - Include local and state health department, corporate contacts, reporting systems and EHR help desk support, pharmacy, local hospital, NHSN reporting contacts, lab contacts
- Ensure personal understanding and competency of job specific IPC trainings



# Requirements of the Facility's IPC Program

- The facility must designate one or more individuals as the infection preventionist who is responsible for managing the infection prevention and control program, including the antibiotic stewardship program.
- The IP must have primary professional training in nursing, medical technology, microbiology, epidemiology, or another-related field.
- The IP must be qualified by education, training, experience, or certification. They must be trained beyond initial professional training or education prior to assuming the role.

<https://www.ecfr.gov/current/title-42/chapter-IV/subchapter-G/part-483/subpart-B/section-483.80>

# Infection Preventionist Requirements

- The amount of time required to fulfill the IP role must be at least part-time and should be determined by the facility assessment.
- The IP must physically work onsite in the facility. He/she cannot be an off-site consultant or perform the IP work at a separate location such as a corporate office or affiliated short term acute care facility.
- The IP must be a participant on the facilities Quality Assessment and Assurance (QAA) Committee and report on the infection prevention and control program and on incidents (e.g. HAIs) identified under the program on a regular basis.

<https://www.ecfr.gov/current/title-42/chapter-IV/subchapter-G/part-483/subpart-B/section-483.80>

- [AHCA NCAL Tips for Meeting the Infection Preventionist Requirements](#)

## Poll Question #2

Does the IP in your facility have any additional roles and/or responsibilities?

- A. No, primary role is IP
- B. Yes, DON
- C. Yes, ADON
- D. Yes, QAPI
- E. Yes, other

# Regulations VS Guidelines

- Regulations must be followed by law.
- Guidelines are framed as recommendations. They are written to provide practice guidance and are generally formed by expert consensus using the best scientific evidence.
  - Facilities could be cited for failing to implement CDC guidelines.
  - There are various ways to implement them and the facility must demonstrate to CMS how they have implemented the guideline.

Regulations				Nationally Recognized Guidelines
CMS	Accreditation Standards	Other Federal Regulations	State Regulations	CDC/HICPAC/SHEA
<p><b>U.S. Code of Federal Regulations, Title 42/Chapter IV/Subchapter G/Part 483/Subpart B- Requirements for Long Term Care Facilities</b>  <a href="https://www.ecfr.gov/current/title-42/section-483.80">https://www.ecfr.gov/current/title-42/section-483.80</a></p> <p><b>CMS State Operations Manual (SOM), Appendix PP</b>  <a href="https://www.cms.gov/medicare/provider-enrollment-and-certification/guidanceforlawsandregulations/downloads/appendix-pp-state-operations-manual.pdf">https://www.cms.gov/medicare/provider-enrollment-and-certification/guidanceforlawsandregulations/downloads/appendix-pp-state-operations-manual.pdf</a></p> <p><b>Policy &amp; Memos to States</b> (updates)  <a href="https://www.cms.gov/medicare/health-safety-standards/quality-safety-oversight-general-information/policy-memos/policy-memos-states-and-cms-locations">https://www.cms.gov/medicare/health-safety-standards/quality-safety-oversight-general-information/policy-memos/policy-memos-states-and-cms-locations</a></p> <p>*IPC Section is 483.80</p>	<p>Examples:</p> <p>The Joint Commission</p>	<p>Examples:</p> <p>OSHA FDA EPA</p>	<p><b>Louisiana Department of Health- Health Standards Section</b>  <a href="#">Health Standards Section   Louisiana Department of Health</a></p> <p>LAC 48:1 Chapters 97-99 Nursing Facilities Licensing Standards  <a href="#">NF_LAC_11.29.23.pdf</a></p> <p><b>Sanitary Code-State of Louisiana Part II-The Control of Disease</b></p> <p><a href="https://ldh.la.gov/assets/oph/Center-PHCH/Center-CH/infectious-epi/Surveillance/sanitarycode_06_21_Revision_final.pdf">https://ldh.la.gov/assets/oph/Center-PHCH/Center-CH/infectious-epi/Surveillance/sanitarycode_06_21_Revision_final.pdf</a></p>	<p>Examples:</p> <p>CDC Core Infection Prevention and Control Practices for Safe Delivery in All Settings  <a href="https://www.cdc.gov/infection-control/hcp/core-practices/index.html">https://www.cdc.gov/infection-control/hcp/core-practices/index.html</a></p> <p>CDC Guidelines and Guidance Library SHEA/IDSA/APIC Practice Recommendations</p>

Adapted from <https://icap.nebraskamed.com/wp-content/uploads/sites/2/2025/01/01.09.25-LTC-Professional-Role-of-the-IP-in-Long-term-Care.pdf>



# Training and Professional Development

## Poll Question #3

What formal training have you had as an IP? (Choose all that apply)

- A. CDC Nursing Home Infection Preventionist Online Training
- B. APIC Long Term Care Infection Preventionist Essentials Training
- C. Corporate or facility provided training
- D. Other
- E. None

# CDC TRAIN

- [CDC TRAIN](#) is CDC's online learning system. It offers access to thousands of public health training opportunities—many with free CE. CDC TRAIN is a gateway into the [TRAIN Learning Network](#), the most comprehensive catalog of shared public health training opportunities. Sign-up for a free account, search for courses, and manage your training transcript.
- [Nursing Home Infection Preventionist Training Course](#)
  - 24 modules that provide IPC training for individuals responsible for IPC programs in nursing homes so they can effectively implement their programs and ensure adherence to recommended practices by front-line staff.

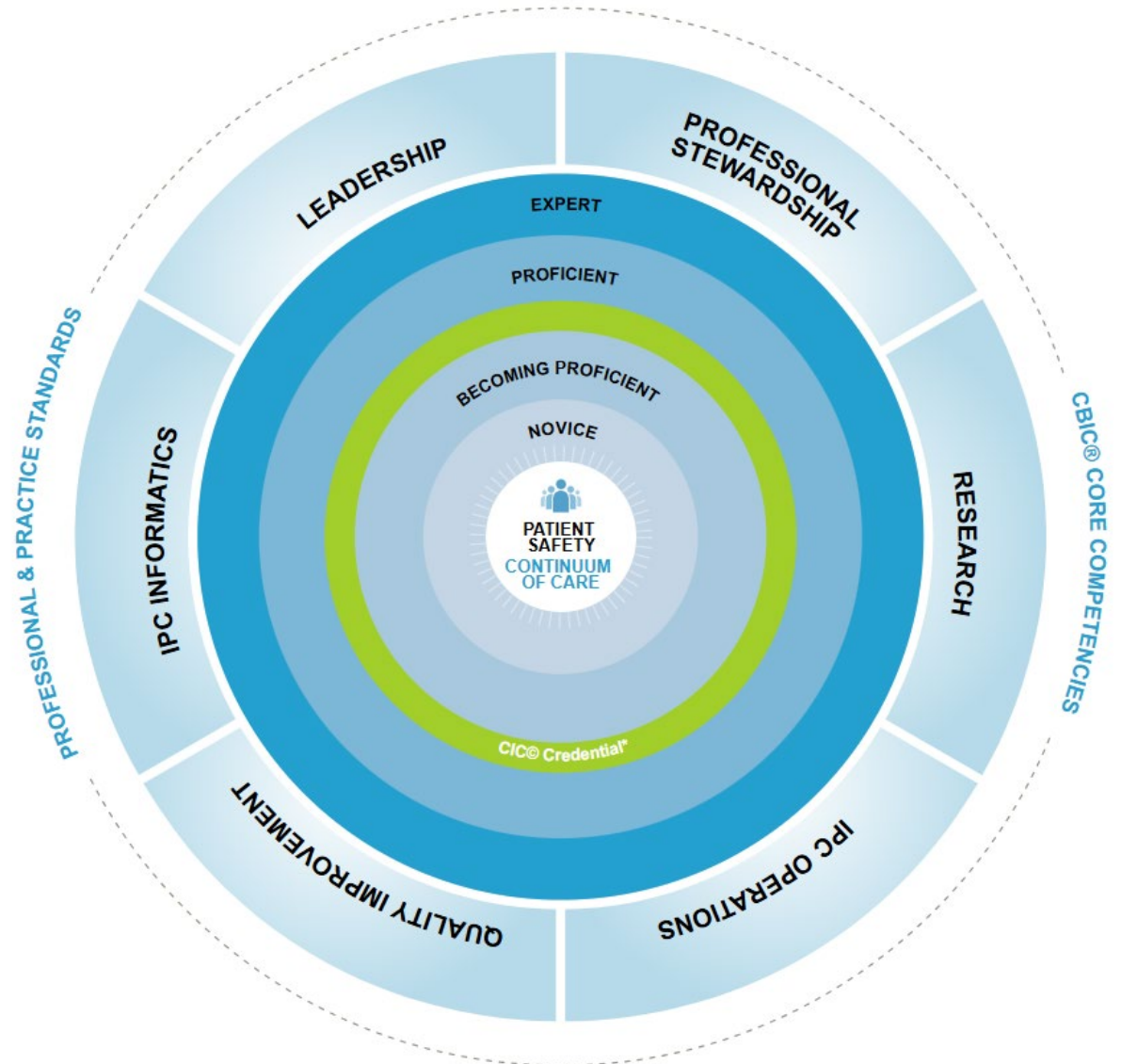


# CDC/STRIVE Infection Control Trainings

- CDC developed the [States Targeting Reduction in Infections via Engagement \(STRIVE\) curriculum](#) with national infection prevention experts led by the Health Research & Educational Trust (HRET).
- Courses address both the technical and foundational elements of healthcare-associated infection (HAI) prevention.
- Foundational Infection Prevention (IP) Strategies modules:
  - Competency-based Training, Audits, and Feedback
  - Hand Hygiene
  - Strategies for Preventing HAIs
  - Environmental Cleaning
  - Personal Protective Equipment
  - Patient and Family Engagement
  - Building a Business Case for Infection Prevention

# Association for Professionals in Infection Control and Epidemiology (APIC) Competency Model

- [IP career development and advancement guide](#)- abbreviated version available for non-APIC members.
- Complete guide available with [APIC membership](#)
- Consider joining your [local Louisiana APIC chapter](#)



# APIC Competency Model Domains

Leadership	Professional Stewardship	Quality Improvement	IPC Operations	IPC Informatics	Research
Communication	Accountability	Infection preventionist as subject matter expert	Epidemiology and surveillance	Surveillance technology	Evaluation of research
Critical thinking	Ethics		Education	Electronic medical records and electronic data warehouse	Comparative effectiveness research
Collaboration	Financial acumen	Performance improvement	IPC rounding Cleaning, disinfection, sterilization		Implementation and dissemination science
Behavioral science	Population health	Patient safety	Outbreak detection and management	Data management, analysis, and visualization	Conduct or participate in research or evidence-based practice
Program management	Continuum of care	Data utilization	Emerging technologies	Application of diagnostic testing data and techniques	
Mentorship	Advocacy	Risk assessment and risk reduction	Antimicrobial stewardship		
			Diagnostic stewardship		

[Advancing the profession: An updated future-oriented competency model for professional development in infection prevention and control](#)

# Poll Question #4

Which of the following best describes you?

- A. I have earned my CIC certification
- B. I have never heard of CIC certification
- C. I am actively studying for CIC certification
- D. I am not sure about earning CIC certification

# University of Nebraska Medical Center

## The Infection Preventionist's Orientation Workbook: Essential Instructions for the Survival Guide

- Developed to empower Infection Preventionists to advance practice through education, resource development, and novel technological solutions

<https://innovateipc.org/ipc-support-center/survival-guide>





# Spread Knowledge, Not Germs!

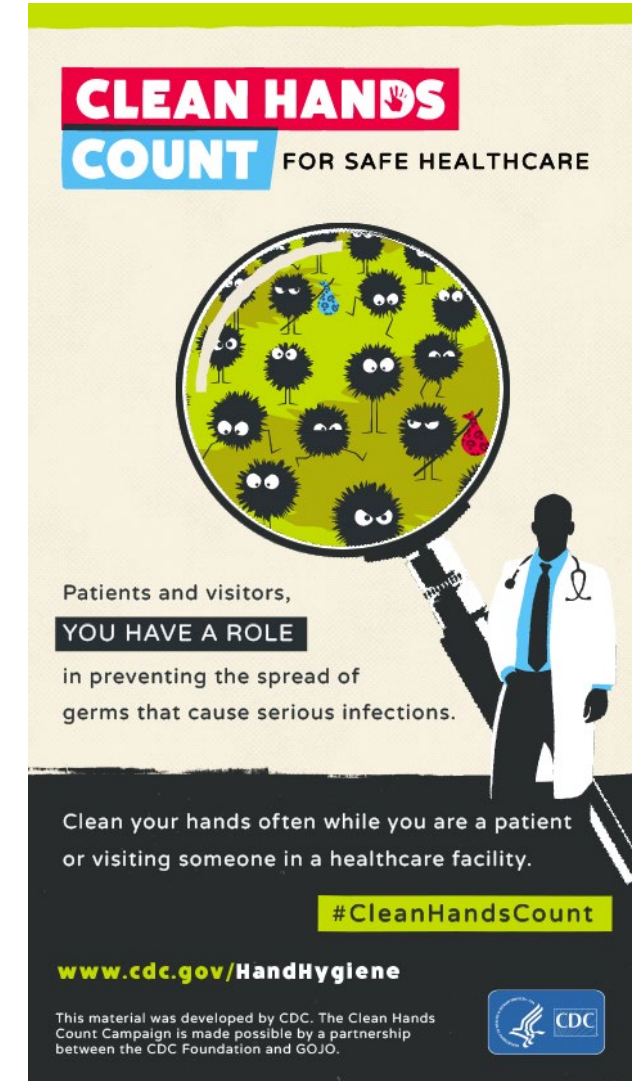


# Educating Others

- If you're unsure where to start- hand hygiene is a very important core competency!
- Implement topics at monthly staff meeting
- Utilize ready-made materials available online
- Include educational opportunities for visitors and residents



<https://www.cdc.gov/clean-hands/hcp/clean-hands-count/index.html>



# Additional Resources

## [CDC's Project Firstline Homepage](#)

Access training and education materials, signage and graphics, and ready-made resources

## [APIC's Infection Prevention and You](#)

Infection Prevention videos, infographics, quick tips, and more

## [Health Quality Innovators: The Long-Term Care Infection Preventionist Survival Guide](#)

Guide for setting up a successful infection control program

## [A Unit Guide To Infection Prevention for Long-Term Care Staff | Agency for Healthcare Research and Quality](#)

Designed to provide LTC staff with basic knowledge about LTC facility infection prevention guidelines

## [NACCHO Long Term Care Infection Prevention and Control Toolkit](#)

IPC capacity-building strategies



# University of Washington



Our mission is simple: to foster a supportive environment where we can empower each other to navigate the ever-changing landscape of infection prevention and make a lasting impact on healthcare outcomes.

<https://wish.washington.edu/tips>

**For More Information:** [uwtips@uw.edu](mailto:uwtips@uw.edu)

# PFL Online Resources

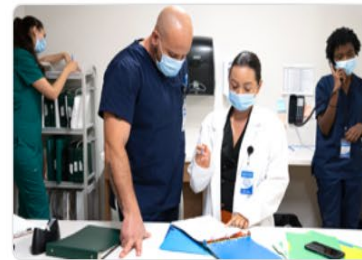
- Project Firstline's resources cater to multiple styles of learning, so healthcare workers can train their staff or learn independently with content that is engaging and accessible.
- Ready-made resources are adaptable and can be easily integrated into existing infection control training programs. Whether you have 5 minutes or 30 minutes, you can lead an effective training with your team.
- Almost all materials are available in English and Spanish. (Casi todos los materiales están disponibles en inglés y español.)

# PFL Online Resources

Use the training and educational materials filter to find toolkits, micro-learns, infographics, and fact sheets on topics such as:

- Germ reservoirs (wet and dry surfaces, blood, gut, etc.)
- Measles
- Infection control for respiratory viruses
- How to read a disinfection label and many more!

## Project Firstline Training and Education



### Training and Educational Materials

Project Firstline training and educational materials range from interactive scenarios to training to...



### Print Materials, Graphics and More

Find graphics, signage and more for healthcare facilities and workers.



### Guidelines for Respiratory Viruses

Infection control actions needed to protect patients, yourself, and your coworkers from the spread o...

# PFL Online Interactive Resources

Online interactive scenario training topics:

Outpatient Exam Room

Nurses Station

Emergency Room

Where Germs Live in Healthcare

Fidgeting Felix gets an IV

Diarrhea Dilemma

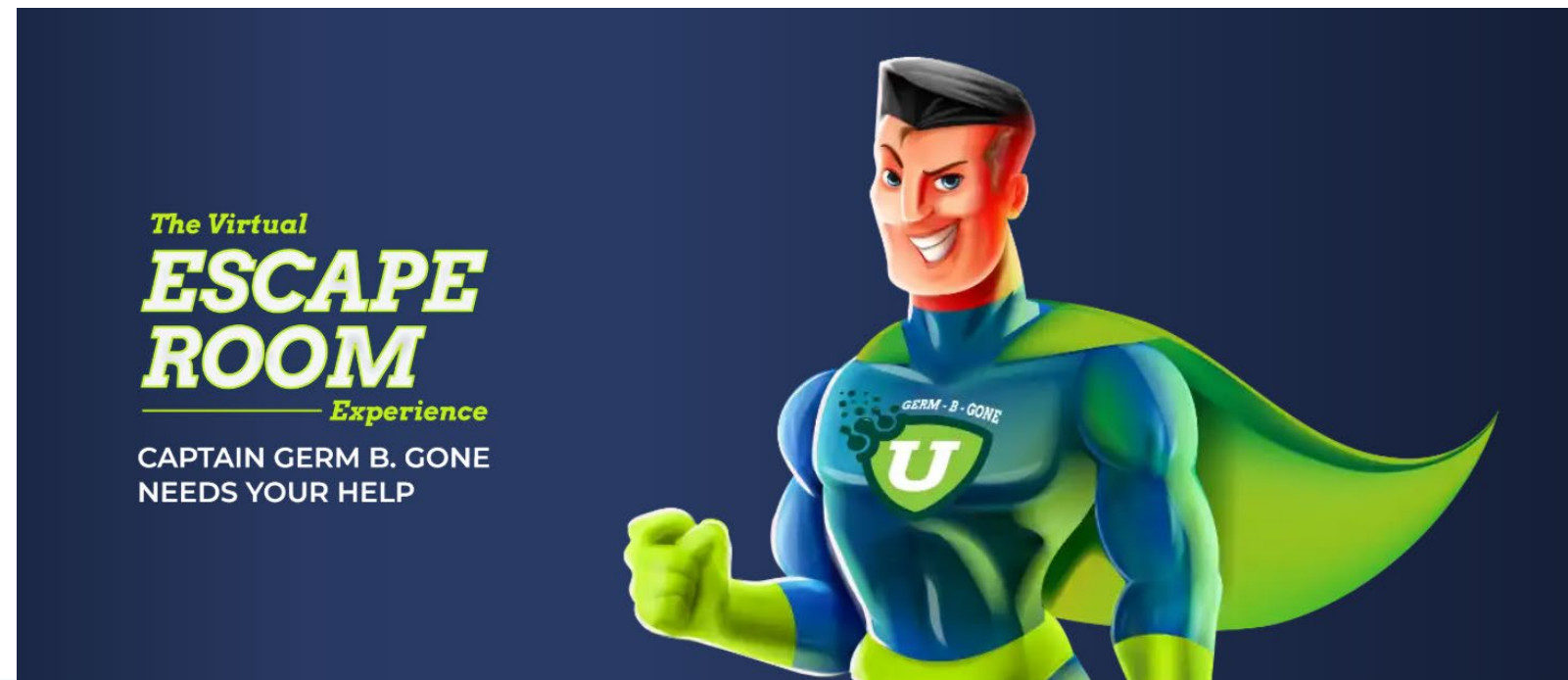


<https://www.cdc.gov/project-firstline/hcp/training/index.html>

# PFL Online Interactive Resources

Project Firstline New York's Virtual Escape Room is intended for use by NY residents, but can be accessed as a reference for out-of-state IPs interested in hosting their own live escape room activity

<https://www.projectfirstlineny.org/escape-room/>





# Louisiana PFL In-Person Trainings

- Enhanced Barrier Precautions
- Hand Hygiene with Simulated Germs
- Escape Room
- Room of Horrors
- TIPS
  - Risk Assessment Cards
  - Mitigating Risk MadLibs
  - Waiting Room Scenario



## Poll Question #5

How can PFL best support you in your role? Select all that apply:

- A. How to navigate PFL resources
- B. Online training for you and your staff
- C. In-person trainings for you and your staff
- D. Train the trainer – we train you to train your staff
- E. Interactive trainings such as Escape Room, etc.
- F. Support as needed

# Poll Question #6

Who is responsible for IPC in a LTCF?

- A. DON
- B. Nursing and CNA staff
- C. Environmental services
- D. Administrator
- E. Visitors
- F. Dietary
- G. Residents
- H. Infection Preventionist



## **Answer Question #6**

Who is responsible for IPC in a LTCF?

**Everyone is responsible for IPC!**

# Your Regional Staff:

Epidemiology 24-hour line: 1-800-256-2748

[Infection.control@la.gov](mailto:Infection.control@la.gov)

	PFL Nurse Coordinator	Epidemiologist
Region 1	Joanne Kibiego	Vacant
Region 2	Joanne Kibiego	Nichole Tobison
Region 3	Amanda Wells	Georgena Desrosier
Region 4	Allison Talley	Angie Orellana
Region 5	Jennifer Bruney	Veronica Stewart
Region 6	Susan Babineaux	Leslie Arceneaux
Region 7	Altrekia Jackson	Julia Luraguiz
Region 8	Susan Babineaux	Vacant
Region 9	Amanda Wells	Caryn Puetz

# References

- APIC. Infection Preventionist (IP) Competency Model. (some resources are members-only). <https://apic.org/professional-practice/infection-preventionist-ip-competency-model/>
- CDC. Nursing Home Infection Preventionist Training. <https://www.cdc.gov/long-term-care-facilities/hcp/training/index.html>
- Code of Federal Regulations. <https://www.ecfr.gov/current/title-42/chapter-IV/subchapter-G/part-483/subpart-B/section-483.80>
- Nebraska Infection Control Assessment and Promotion Program (ICAP). Long Term Care Webinar Series. [Stewardship During Transition of Care](#)
- University of Nebraska 90 Day Survival Guide. <https://innovateipc.org/ipc-support-center/survival-guide>
- University of Washington TIPS. <https://wish.washington.edu/tips>

# Evaluation



# THANK YOU

