



Louisiana

LAHIDD **Report** **2003**

Department of
Health and Hospitals

Office of
Public Health

State Center
for Health Statistics

State Health Care
Data Clearinghouse

**Hospital
Inpatient
Discharge
Data**

Louisiana Hospital Inpatient Discharge Database (LAHIDD)

Annual Report 2003

**As mandated by Louisiana Revised Statutes
40:1300.111 through 40:1300.113**

**Kathleen Babineaux Blanco
Governor**

**Frederick P. Cerise, MD, MPH
Secretary, Department of Health and Hospitals**



2003 LAHIDD Report
Louisiana Department of Health and Hospitals
Office of Public Health

Sharon Howard, MSW
Assistant Secretary

Audrey Pugh, MBA, RPh
Executive Director, Center for Health Policy, Information and Promotion

Darlene W. Smith, BA
Director, State Center for Health Statistics
State Registrar of Vital Records

Robert Starszak, MS, MPH
Manager, State Center for Health Statistics

Editors

State Center for Health Statistics
Rafael A. Jarpa, MSc
Public Health Epidemiologist Supervisor

Sanjeev S. Tendolkar, MD, MPH
Public Health Epidemiologist

Sukhjeet S. Ahuja, MD, MPH
Public Health Epidemiologist

With the assistance of:
Management Information System Section
Carolina Monjarres, BS
Pankaj Poncholi, MPH, OCP, DBA

Cover Design
Gina LaBorde
Auxiliary Enterprises, Graphic Solutions
Louisiana State University, Health Sciences Center

*This report is the result of contributions of data received from Louisiana hospitals.
The Louisiana State Center for Health Statistics would like to acknowledge their efforts
and extend its gratitude to all who assisted in the publication of this document.*

A Publication of the
Department of Health and Hospitals
Office of Public Health
State Center for Health Statistics
325 Loyola Avenue, Room 515
New Orleans, LA 70112
(504) 568-5205
Website: www.oph.dhh.louisiana.gov



STATE OF LOUISIANA
DEPARTMENT OF HEALTH AND HOSPITALS



Kathleen Babineaux Blanco
GOVERNOR

Frederick P. Cerise, M.D., M.P.H.
SECRETARY

New Orleans, August 18, 2005

Dear Citizens of Louisiana:

The Louisiana Department of Health and Hospitals' Office of Public Health presents the 2003 Louisiana Hospital Inpatient Discharge Database Report, (LAHIDD). LAHIDD is Louisiana's only comprehensive population-based repository for hospital-inpatient data.

The LAHIDD report provides a unique source of data to describe hospital discharge trends and identify at-risk populations within the State of Louisiana. It contains information on patient demographics, diagnoses, procedures, as well as hospital charges and costs. Data are presented at the parish and state levels, along with comparable U.S. morbidity statistics.

We hope that this report will prompt discussion on measures and policies that will improve the health status of Louisiana's residents. The LAHIDD report is also available for review on the Office of Public Health's web site at www.oph.dhh.louisiana.gov. We gladly welcome your feedback.

Sincerely,

Sharon G. Howard
Assistant Secretary

SGH:rj

Table of Contents 2003

Message from the Assistant Secretary	I
Table of Contents	II-III
LAHIDD Background	IV-V
State Summary 2003.....	2
Chart 1-2. Hospital Discharges by Age Group & Gender.....	5
Chart 3-4. Hospital Discharges by Race, Counts by Year.....	6
Table 1. Top 10 Principal Diagnoses at Discharge.....	7
Table 2a-2b. Top 10 Principal Diagnoses by Body System	8
Table 3a-3g. Top 5 Principal Diagnoses by Age Group.....	9-10
Chart 5-6. Hospital Discharges by Co-morbidities, Admit Source.....	11
Table 4. Top 10 Co-morbidities.....	12
Table 5. Top 10 Co-morbidities by Age Group.....	13
Table 6. Top 10 Principal Diagnoses Admitted through Emergency Room.....	14
Table 7. Top 10 Principal Diagnoses Admitted Through Emergency Room by Age Group.....	15
Table 8. Top 10 Principal Procedures.....	16
Table 9. Top 10 Highest Average Charged Principal Diagnoses	17
Table 10. Top 10 Least Average Charged Principal Diagnoses.....	18
Table 11. Top 10 Principal Diagnoses with The Longest Hospital Stay	19
Chart 7-8. Hospital Discharges by Primary Payers, Non-Routine Discharges.....	20
Table 12. Top 10 Principal Diagnoses Charged to Medicare.....	21
Table 13. Top 10 Principal Diagnoses Charged to Private Insurers.....	22
Table 14. Top 10 Principal Diagnoses Charged to Medicaid.....	23
Table 15. Top 10 Principal Diagnoses of Patients who Leave Against Medical Advice.....	24
Table 16. Top 10 Principal Diagnoses of Patients Discharged to LTC & other Facilities.....	25
Table 17. Top 10 Principal Diagnoses of Discharges resulting in In-hospital Death	26
Table 18. Top 3 In-Hospital Death counts by Principal Diagnoses and Age Group	27
State vs. U.S. Summary 2003.....	29
Table 19a. Top 10 Principal Diagnoses Discharges, Louisiana vs. U.S. 2002.....	30
Table 19b. Top 10 Principal Diagnoses Discharges, Louisiana vs. U.S. 2003.....	31
Table 20a. Top 10 Principal Procedures Discharges, Louisiana vs. U.S. 2002.....	32
Table 20b. Top 10 Principal Procedures Discharges, Louisiana vs. U.S. 2003.....	33
Table 21a. Top 10 Charges for Principal Diagnoses, Louisiana vs. U.S. 2002.....	34
Table 21b. Top 10 Charges for Principal Diagnoses, Louisiana vs. U.S. 2003	35
Table 22a. Top 3 Principal Diagnoses with Corresponding Top 5 Principal Procedures, Louisiana vs. U.S. 2002.....	36
Table 22b. Top 3 Principal Diagnoses with Corresponding Top 5 Principal Procedures, Louisiana vs. U.S. 2003.....	37

Parish Summary 2003.....	39
Table 23. Hospital Inpatient Discharges by Parish.....	40
Table 24. Percent of Total Parish Discharges for Louisiana's Top 5 Principal Diagnoses	41
Table 25 Percent of Total Parish Discharges for Louisiana's Top 5 Principal Diagnoses Resulting in In-Hospital Death	42
Table 26 Percentage and Average Charges for Source of Charges by Parish.....	43-44
Table 27. Percent of Louisiana's Top 5 Principal Diagnoses by Parish.....	45
Table 28. Percent of Louisiana's Top 5 Principal Diagnoses resulting in In-hospital Death by Parish.....	46
Table 29. Percent of Discharge Status by Year.....	47
Table 30. Number of Discharges by Principal Diagnoses and Health Region.....	48-50
Technical Notes.....	52
Glossary.....	54
UB-92 form sample	

BACKGROUND

Act 622 of the 1997 Regular Session of the Louisiana Legislature enacting R.S. 40:1300.111 through 40:1300.113 designated the STATE HEALTH CARE DATA CLEARINGHOUSE as the agency responsible for the collection of data related to the healthcare industry. This law charges the CLEARINGHOUSE with the responsibility for creating population-based healthcare data registries. These registries are expected to offer Louisiana and its healthcare providers their first opportunity to plan and operate systematic intervention strategies that address the antecedents of death.

In prioritizing the mandates of the CLEARINGHOUSE, the DEPARTMENT OF HEALTH AND HOSPITALS, OFFICE OF PUBLIC HEALTH (DHH/OPH) considered the various health-information data streams already in existence and the data-collection experiences of 36 other states. It was determined that Louisiana would benefit the most by focusing its initial data-collection efforts on hospital inpatient discharge data. As a result, the Louisiana Hospital Inpatient Discharge Database (LAHIDD) was designated as the registry containing inpatient discharge data submitted to DHH/OPH by hospitals within Louisiana.

History of LAHIDD

The rulemaking process enabling the development of LAHIDD which involved the participation of public and private stakeholders, was completed in the fall of 1998. The following three milestones depict the legislative and regulatory history of the project:

- ❖ House Bill 1462 passed in May 1997; signed by the Governor in July as Act 622.
- ❖ Rules committee formed in DHH/OPH in November 1997
- ❖ Rules governing LAHIDD published in July 1998

An extensive survey of all hospitals in the state regarding their database systems and their discharge data submission capacities was conducted from late 1997 to early 1998. As a result of this survey, a comprehensive submittal guide was created and mailed out to hospitals in October 1998. In December 1998, hospitals began submitting data on discharges occurring between January and June 1998. To date, the State Center for Health Statistics has received fifteen quarterly data submissions from hospitals. These were submitted semi-annually during 1998, and quarterly thereafter, from January 1999 through March 2003.

Purpose of LAHIDD

LAHIDD underlies the commitment of DHH/OPH to the practice of sound public health by expanding the state's ability to carry out its three Core Public Health Functions:

- Assessment of community health status and resources;
- Assurance of availability and provision of necessary, high-quality, effective services; and
- Development of health policy that accurately addresses community needs.

The LAHIDD data will help DHH/OPH to accomplish its functions by:

- ❖ Enhancing Disease Surveillance and Reporting

LAHIDD provides a unique resource for the investigation of the progression of morbidity in the population and helps to identify at-risk populations within the community. LAHIDD data can be enriched through linkage to other DHH/OPH databases and can be further enhanced by information gathered by the state's other surveillance programs (e.g., Injury Research and Prevention, Behavioral Risk Factor Surveillance). Linking LAHIDD data to these other population-based databases will enable the development of effective prevention policies

targeted to at-risk populations. For DHH/OPH programs such as Tuberculosis and HIV, these data can be used to track patient treatment and to evaluate the completeness of programmatic surveillance.

❖ Assessing Healthcare Utilization

Many areas in Louisiana are experiencing rising healthcare costs and shortages of health professionals. These costs and shortages make it essential that patients, healthcare professionals, hospitals, and third-party payers have the necessary information to:

- evaluate health care needs and
- identify the appropriate and efficient utilization of health services.

Ultimately, evaluation of needs and identification of appropriate and efficient utilization of health services requires an understanding of:

- the patterns and trends in the availability, utilization, and costs of health care services
- the underlying patterns of disease that necessitate these services.

Through LAHIDD, the STATE HEALTH CARE DATA CLEARINGHOUSE provides information needed to make these determinations. It is different from other sources of data in that LAHIDD is Louisiana's only comprehensive, population-based repository for hospital inpatient data while the DHH/OPH has been the state's repository for mortality data. LAHIDD contains information needed to measure and evaluate morbidity and hospital charges associated with inpatient stays in the state. It also contains information on the diagnoses of those treated, the procedures performed, and the hospital charges for those procedures.

The detailed information available in LAHIDD enables the state to identify specific geographic areas and populations in need of improved access to healthcare and health education. While maintaining LAHIDD confidentiality restrictions, identification of healthcare needs can be accomplished by tracking:

- utilization of hospital care for specific diagnoses and procedures in targeted populations and geographic areas and
- hospital charges for services provided to targeted populations and in geographic areas.

Hospital Inpatient Discharge Data



State Summary 2003

State Summary 2003

This section summarizes information collected from patients hospitalized and discharged from 124 Louisiana licensed hospitals for 2003. Data were consolidated and presented by patient and disease characteristics. Health care facilities include acute care, long-term care, psychiatric, rehabilitation, and specialty hospitals.

Patients between 65 and 84 years of age accounted for most hospital stays in Louisiana for the year 2003 (Chart 1, pg. 5). Those aged 18-44 years old followed closely at slightly lower percentages for the same period.

Hospital discharge data for 2003 show that women accounted for more discharges than men (Chart 2, pg. 5). In that year, 53.7% of total discharges were among white/Caucasian patients as compared to 50.2% in the year 2002. Similarly, the percentage for black/African-Americans went up to 28.9% in 2003 from 23.4% in 2002. **(Chart 3, pg. 6).** The total number of discharges for each month varies throughout each year; for 2003 the average monthly count of discharges was 45,268 **(Chart 4, pg. 6).**

The principal diagnoses in 2002-2003 are shown on Table 1, 2a-2b, and 3a-3g. The most common diagnosis for hospitalization during the 2002-2003 periods was “live birth” of an infant. In the year 2002, “pneumonia*” ranked second as a principal diagnosis of hospital discharges. In the year 2003, “pneumonia*” was still second, closely followed by “congestive heart failure, non-hypertensive” **(Table 1, pg. 7).**

The leading diagnosis by body-system classification resulting in hospitalization was “diseases of the circulatory system”, which accounted for 20.2% of all discharges for the year 2003 as compared to 20.1% in 2002. “Diseases of the respiratory system” ranked second with 10.6%, down from 10.7% in 2002, and “complications of pregnancy, childbirth and the puerperium” ranked third with 9.5% in 2003, down from 10.2 % in 2002. **(Table 2a-2b, pg. 8).**

For the year 2003, the principal diagnoses for discharges by age group are presented on Tables 3a-3g, pgs 9-10.

Co-morbidities are coexisting medical problems that are not the main reason for a hospital stay. Discharges with co-morbidities are illustrated on Chart 5 and Tables 4-5, pgs. 11-13. Roughly 90% of all patients hospitalized during 2002-2003 had, at least, one co-morbidity. Patients with four or more co-morbidities accounted for an average 46% of hospital stays in the same 2-year period. During the year 2003, “essential hypertension” was the most common co-morbidity at about 6.7%, followed by “coronary atherosclerosis and other heart disease” at 5.8% and “fluid and electrolyte disorders” at 3.8%. **Co-morbidities by age group are listed on Table 5, pg. 13.**

Principal diagnoses admitted through the Emergency Room (ER) during the period of 2002-2003 in Louisiana are shown on *Chart 6, pg. 11 and Tables 6 and 7, pgs. 14-15*. In the year 2003, 53.6% of all admissions were for birth or routine procedure; 40% were through the emergency room (ER). At least four of the top 10 diagnoses for patients admitted to the hospital through the ER were related to heart problems, and two of the top 10 diagnoses were related to respiratory problems. About 6% of all admissions to the hospital through the ER were due to “pneumonia*”.

Table 7 reports the top 10 principal diagnoses admitted through the emergency room by age group in the year 2003.

Table 8, pg. 16 shows the top 10 principal procedures in Louisiana for the years 2002-2003. Three of the top 10 principal procedures were related to pregnancy and childbirth and two of the top 10 procedures during this period were related to heart conditions. Lower cervical cesarean section ranked first in principal procedures (5% in 2002, 4.7% in 2003).

Principal diagnoses with the highest charges per stay and the longest average lengths of stay are illustrated on *Table 9, pg. 17 and Table 11, pg. 19*. In 2002 and 2003, diagnoses related to newly born infants (i.e., “short gestation, low birth weight and fetal growth retardation”) were among the top three most expensive diagnoses treated in Louisiana hospitals on a charges-per-stay basis (***Table 9, pg. 17***). Hospitals charged an average of \$58,404 per stay for these diagnoses in 2002, and \$136,566 per stay in 2003. In the year 2003, “intrauterine hypoxia and birth asphyxia” was the most expensive condition treated in Louisiana hospitals, with charges of \$453,690 and hospital stay of 77 days (there was only one discharge reported for this condition which makes it an outlier as compared to the rest of diagnoses). Spinal cord injury ranked fifth (\$48,964 in 2002 and \$69,062 in 2003).

The least expensive diagnoses on a per-discharge basis and those with the shortest average hospital stays are depicted in *Table 10, pg. 18*. Among diagnoses with the lowest average charges during 2002-2003 there were, at least, three related to pregnancy and perinatal conditions.

The Medicare and Medicaid programs combined were billed for more than half of all hospital stays in Louisiana, at 61.2% in 2002 and 62.9% in 2003 (*Chart 7, pg. 20*). Medicare was billed for more than one-third of all hospital stays in the two-year period. The three most prominent diagnoses for which Medicare was charged during this period were “congestive heart failure, non-hypertensive”, “pneumonia*”, and “coronary atherosclerosis and other heart diseases” (***Table 12, pg. 21***). Private insurers were also billed for approximately one-third of all hospital stays in 2002-2003. Four of the top ten diagnoses charged to private insurers were related to heart problems (***Table 13, pg. 22***). Medicaid was billed for approximately one-fifth of all hospital stays and mostly for

diagnoses related to infancy and childbirth, which accounted for five of the top 10 principal diagnoses (**Table 14, pg. 23**).

Discharge status of patients is shown on Chart 8 and Tables 15-18. In 2003, 73.8% of the discharges resulted in the patients returning home following completion of treatment in the hospitals. About 2.4% of hospital stays culminated in death, 2.2% were referred to a different short-term general hospital facility, 9.3% resulted in the patient being sent to a long-term care facility (**Chart 8, pg. 20**) and 0.7% involved patients who were released against medical advice. The principal diagnosis for this last group was most frequently “substance-related mental disorders” at 14.7% (**Table 15, pg. 25**).

The top 3 principal diagnoses causing discharged patients to be referred to long-term care and other facilities were “pneumonia*”, “urinary tract infection”, and “congestive heart failure non-hypertensive”. The most common diagnoses that compromised functional ability were “acute cerebrovascular disease”, “fracture of neck of femur (hip)” and “rehabilitation care, fitting of prostheses, and adjustment of devices” (**Table 16, pg. 25**).

“Pneumonia*”, “septicemia”, and “acute cerebrovascular disease” were the most common primary diagnoses for stays that resulted in in-hospital deaths. Other diagnoses resulting in in-hospital deaths were linked to cardiac diseases, respiratory diseases, and cancer (**Table 17, pg. 26**).

In-hospital death counts by principal diagnoses and age indicate that, for patients aged 45 years and older, the most common diagnoses were complications from “septicemia (except in labor)” and “pneumonia*”. Other than a relatively large count of death during birth, the primary conditions for hospital stays resulting in in-hospital deaths for those under aged 44 were “HIV”, followed by “intracranial injury” and “acute cerebrovascular diseases” (**Table 18, pg. 27**).

* *Pneumonia except that caused by tuberculosis or sexually transmitted diseases.*

Chart 1. Hospital Discharges by Age Group (Years)
Louisiana, 2002-2003

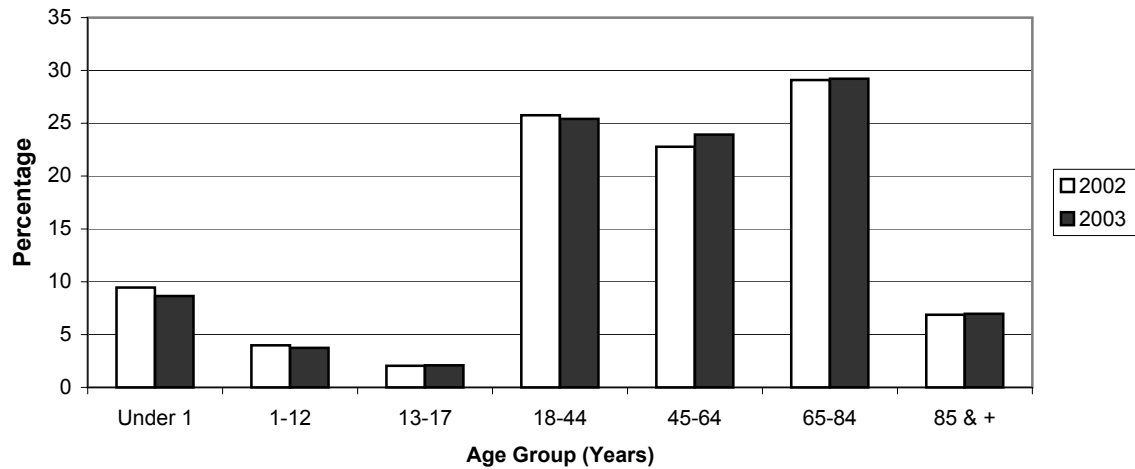
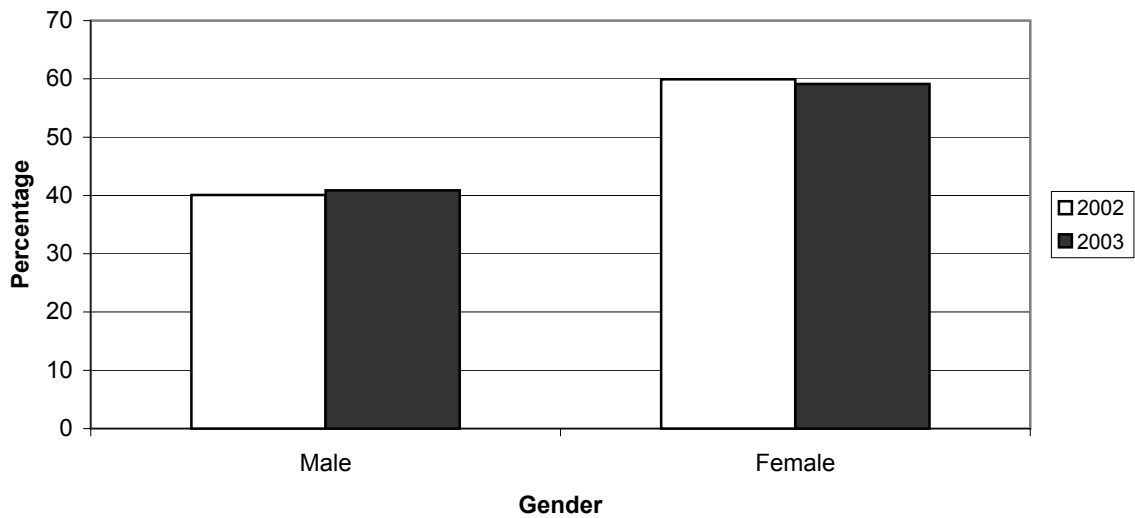
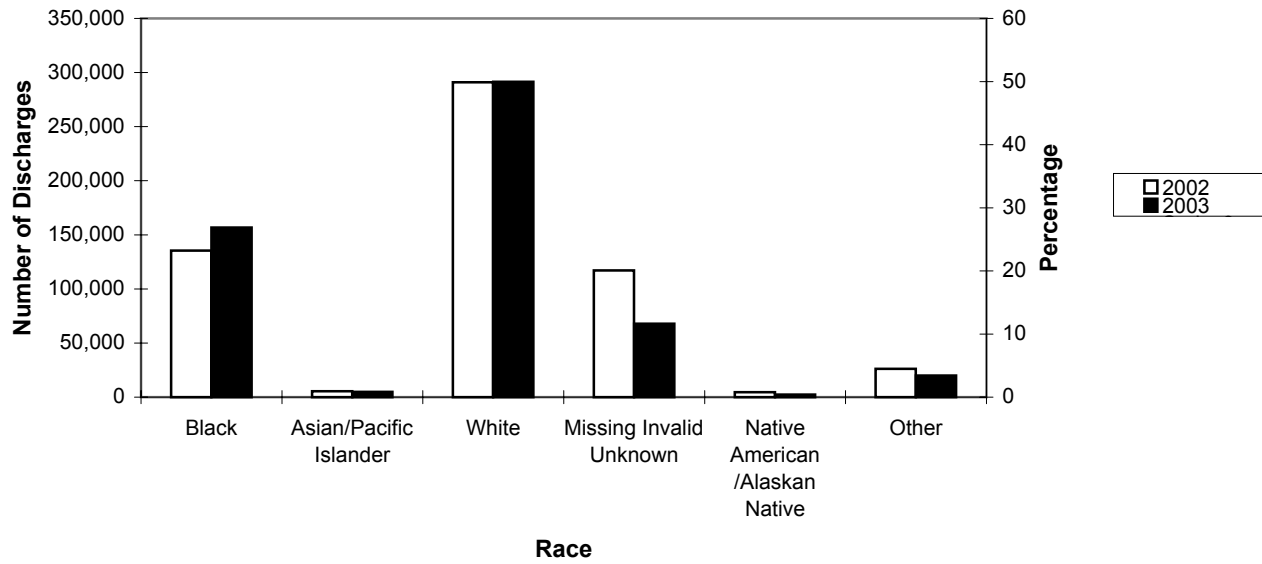


Chart 2. Hospital Discharges by Gender
Louisiana, 2002-2003



**Chart 3. Number and Percentage of Discharges by Race
Louisiana, 2002-2003**



**Chart 4. Monthly Discharge Counts by Year
Louisiana, 2002-2003**

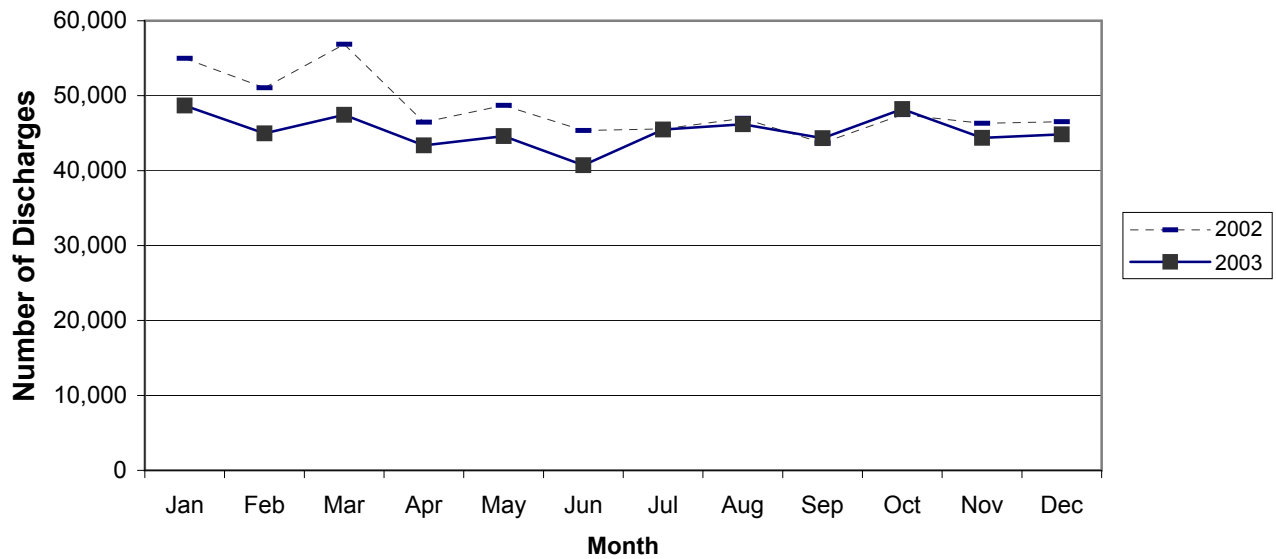


Table 1. Top 10 Principal Diagnoses at Discharge, Louisiana 2002-2003

Rank	Principal Diagnoses 2002	# of discharges	% of all discharges	Principal Diagnoses 2003	# of discharges	% of all discharges
1	Liveborn	42,155	7.3	Liveborn	36,594	6.7
2	Pneumonia (except that caused by TB or STDs)	23,757	4.1	Pneumonia (except that caused by TB or STDs)	22,461	4.1
3	Coronary atherosclerosis and other heart disease	21,950	3.8	Congestive heart failure, nonhypertensive	21,627	4.0
4	Congestive heart failure, nonhypertensive	21,601	3.7	Coronary atherosclerosis and other heart disease	20,164	3.7
5	* Fluid and electrolyte disorders	13,481	2.3	Rehabilitation care, fitting of prostheses, and adjustment of devices	12,038	2.2
6	Nonspecific chest pain	13,059	2.3	Nonspecific chest pain	11,821	2.2
7	Chronic obstructive pulmonary disease and bronchiectasis	11,272	1.9	Fluid and electrolyte disorders	11,761	2.2
8	Affective disorders	10,590	1.8	Affective disorders	11,425	2.1
9	Cardiac dysrhythmias	10,090	1.7	Skin and subcutaneous tissue infections	10,689	2.0
10	Acute myocardial infarction	9,854	1.7	Chronic obstructive pulmonary disease and bronchiectasis	10,020	1.8
Total of Top 10 Discharges				Total of Top 10 Discharges	168,600	31.0
Total # of Discharges				Total # of Discharges	543,219	100.0

Note: Shadowed areas indicate rank unchanged for this two-year period

** Rank 5 originally occupied by Missing Values (18204, 3.1)*

Table 2a. Top 10 Principal Diagnoses, Louisiana 2002

Rank	2002 Principal Diagnoses	# of Discharges	% of Discharges
1	Diseases of the circulatory system	116,405	20.1
2	Diseases of the respiratory system	62,283	10.7
3	Complications of pregnancy, childbirth, and the puerperium	59,397	10.2
4	Diseases of the digestive system	50,601	8.7
5	Certain conditions originating in the perinatal period	43,499	7.5
6	Injury and poisoning	37,201	6.4
7	Mental disorders	32,322	5.6
8	Diseases of the genitourinary system	30,056	5.2
9	Endocrine, nutritional, and metabolic diseases and immunity	26,303	4.5
10	Neoplasms	23,304	4.0
Total of Top 10 Discharges		481,371	83.0
Total number of Discharges		579,920	100.0

Table 2b. Top 10 Principal Diagnoses, Louisiana 2003

Rank	2003 Principal Diagnoses	# of Discharges	% of Discharges
1	Diseases of the circulatory system	109,731	20.2
2	Diseases of the respiratory system	57,783	10.6
3	Complications of pregnancy, childbirth, and the puerperium	51,557	9.5
4	Diseases of the digestive system	47,216	8.7
5	Injury and poisoning	38,286	7.0
6	Certain conditions originating in the perinatal period	37,524	6.9
7	Mental disorders	34,475	6.3
8	Diseases of the genitourinary system	27,614	5.1
9	Endocrine, nutritional, and metabolic diseases and immunity	24,308	4.5
10	Symptoms, signs, and ill-defined conditions and factors	23,638	4.4
Total of Top 10 Discharges		452,132	83.2
Total number of Discharges		543,219	100.0

Note: Shadowed areas indicate rank is unchanged for this two year period. Grouping used in these tables is done by using the first two-digits of the multiple level CCS codes, called Body System.

Table 3a. Top 5 Principal Diagnoses, Under 1 Year of Age, Louisiana 2003

Principal Diagnoses	Discharges: Age Group < 1
Liveborn	36,594
Acute bronchitis	2,217
Pneumonia (except that caused by TB or STDs)	991
Fluid and electrolyte disorders	780
Other perinatal conditions	470
Total of Top 5 Discharges	41,052
Total # of Discharges	46,959

Table 3b. Top 5 Principal Diagnoses, Ages 1-12, Louisiana 2003

Principal Diagnoses	Discharges: Age Group 1-12
Pneumonia (except that caused by TB or STDs)	2,557
Fluid and electrolyte disorders	2,439
Asthma	2,219
Skin and subcutaneous tissue infections	1,077
Acute bronchitis	712
Total of Top 5 Discharges	9,004
Total # of Discharges	20,338

Table 3c. Top 5 Principal Diagnoses, Ages 13-17, Louisiana 2003

Principal Diagnoses	Discharges: Age Group 13-17
Affective disorders	1,169
Other complications of birth, puerperium affecting management of mother	544
Other complications of pregnancy	520
Other mental conditions	435
Skin and subcutaneous tissue infections	360
Total of Top 5 Discharges	3,028
Total # of Discharges	11,354

Table 3d. Top 5 Principal Diagnoses, Ages 18-44, Louisiana 2003

Principal Diagnoses	Discharges: Age Group 18-44
Other complications of pregnancy	7,757
Other complications of birth, puerperium affecting management of mother	7,298
Previous C-section	5,414
Affective disorders	5,253
Trauma to perineum and vulva	4,619
Total of Top 5 Discharges	30,341
Total # of Discharges	138,034

Table 3e. Top 5 Principal Diagnoses, Ages 45-64, Louisiana 2003

Principal Diagnoses	Discharges: Age Group 45-64
Coronary atherosclerosis and other heart disease	8,980
Nonspecific chest pain	5,830
Congestive heart failure, nonhypertensive	5,760
Pneumonia (except that caused by TB or STDs)	4,547
Complication of device, implant or graft	3,548
Total of Top 5 Discharges	28,665
Total # of Discharges	129,974

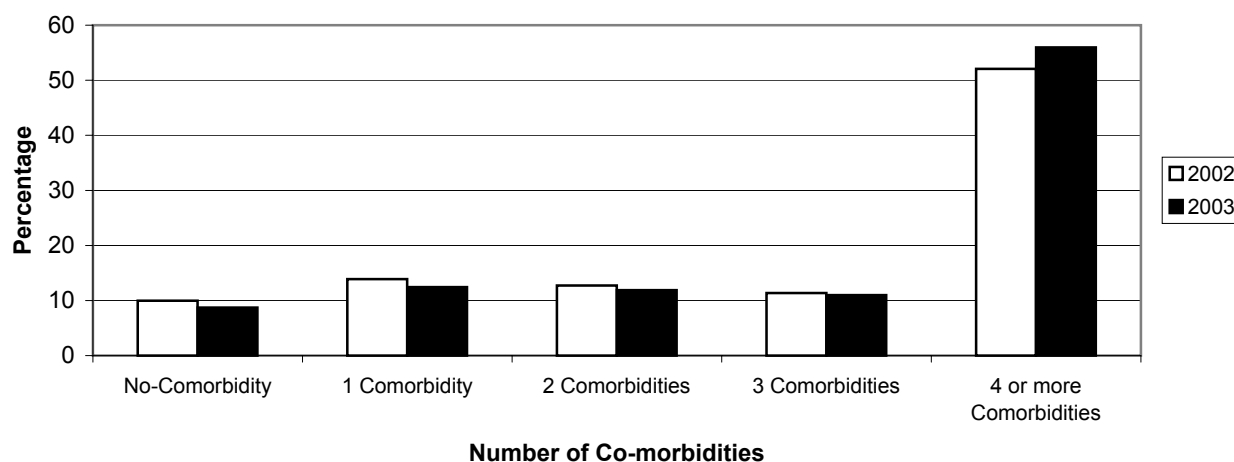
Table 3f. Top 5 Principal Diagnoses, Ages 65-84, Louisiana 2003

Principal Diagnoses	Discharges: Age Group 65-84
Congestive heart failure, nonhypertensive	11,398
Coronary atherosclerosis and other heart disease	9,188
Pneumonia (except that caused by TB or STDs)	8,643
Rehabilitation care, fitting of prostheses, and adjustment of devices	7,340
Cardiac dysrhythmias	5,620
Total of Top 5 Discharges	42,189
Total # of Discharges	158,718

Table 3g. Top 5 Principal Diagnoses, Ages 85 and up, Louisiana 2003

Principal Diagnoses	Discharges: Age Group 85 +
Congestive heart failure, nonhypertensive	3,455
Pneumonia (except that caused by TB or STDs)	3,348
Urinary tract infections	2,060
Rehabilitation care, fitting of prostheses, and adjustment of devices	1,641
Fluid and electrolyte disorders	1,502
Total of Top 5 Discharges	12,006
Total # of Discharges	37,839

**Chart 5. Hospital Discharges by Co-morbidities
Louisiana, 2002-2003**



Note: Co-morbidities are coexisting medical problems that are listed as other diagnoses and are not directly related to the principal diagnoses

**Chart 6. Hospital Discharges by Admit Source
Louisiana, 2002-2003**

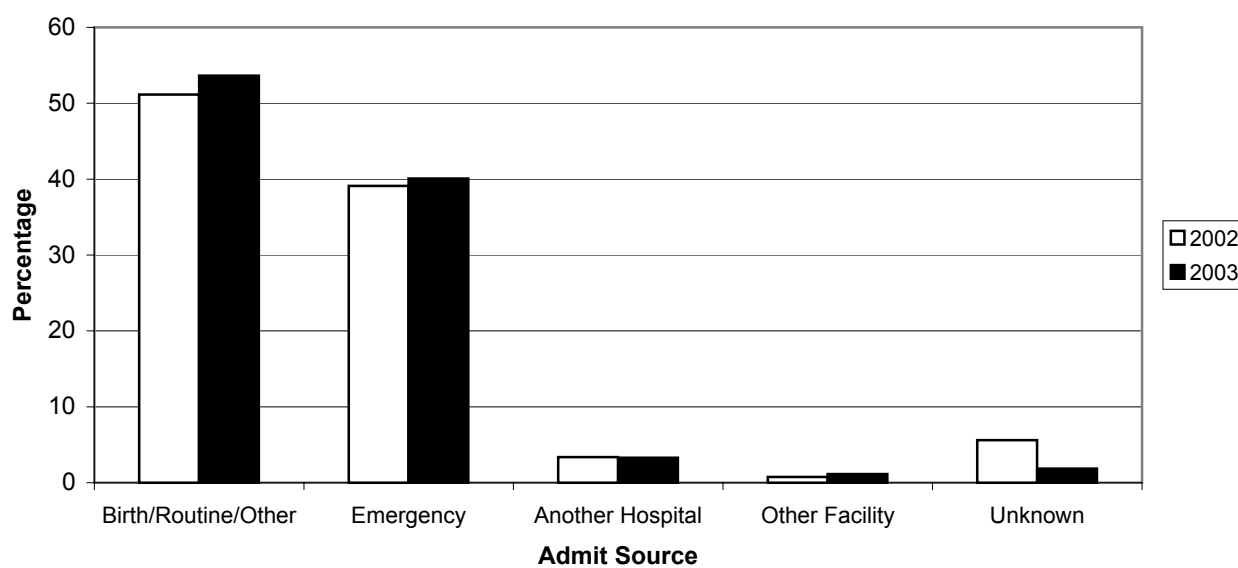


Table 4. Top 10 Co-morbidities Louisiana, 2002-2003

Rank	Co-morbidities 2002	# of co-morbidities	% of co-morbidities	Co-morbidities 2003	# of co-morbidities	% of co-morbidities
1	Essential hypertension	156,321	6.7	Essential hypertension	156,307	6.7
2	Coronary atherosclerosis and other heart disease	138,384	5.9	Coronary atherosclerosis and other heart disease	135,427	5.8
3	Fluid and electrolyte disorders	91,469	3.9	Fluid and electrolyte disorders	89,506	3.8
4	Diabetes mellitus without complication	73,058	3.1	Diabetes mellitus without complication	73,556	3.2
5	Deficiency and other anemia	61,708	2.6	Cardiac dysrhythmias	59,241	2.5
6	Cardiac dysrhythmias	60,643	2.6	Substance-related mental disorders	58,672	2.5
7	Substance-related mental disorders	53,582	2.3	Deficiency and other anemia	58,052	2.5
8	Chronic obstructive pulmonary disease and bronchiectasis	52,194	2.2	Congestive heart failure, nonhypertensive	55,102	2.4
9	Congestive heart failure, nonhypertensive	47,288	2.0	Chronic obstructive pulmonary disease and bronchiectasis	50,720	2.2
10	Disorders of lipid metabolism	47,160	2.0	Disorders of lipid metabolism	48,242	2.1
	Total of Top 10 Co-morbidities	781,807	33.5	Total of Top 10 Co-morbidities	784,825	33.7
	Total # of Co-morbidities	2,335,518	100.0	Total # of Co-morbidities	2,327,552	100.0

Note: Co-morbidities are coexisting medical problems that are listed as other diagnoses and are not directly related to the principal diagnoses

Shadowed areas indicate rank unchanged for this two-year period

Table 5. Top 10 Co-Morbidities by Age Group Louisiana, 2003

Co-Morbidities	Age In Years						
	< 1 yr	1-12	13-17	18-44	45-64	65-84	85 &+
Other perinatal conditions	19,355						
Immunizations and screening for infectious disease	9,737						
Short gestation, low birth weight, & fetal growth retardation	9,541						
Hemolytic jaundice and perinatal jaundice	7,562						
Medical examination/evaluation	4,486						
Other congenital anomalies	2,581						
Septicemia (except in labor)	1,986						
Other male genital disorders	1,628						
Fluid and electrolyte disorders	1,580	3,521	817	11,557	20,989	37,393	13,648
Cardiac and circulatory congenital anomalies	1,476						
Other upper respiratory infections		1,877					
Asthma		1,843					
Otitis media and related conditions		1,724					
Bacterial infection, unspecified site		1,680	789	7,912			
Noninfectious gastroenteritis		1,457					
Viral infection		966					
Pneumonia (except that caused by TB or STDs)		963					
Other gastrointestinal disorders		902					
Fever of unknown origin		801					
Normal pregnancy and/or delivery			2,131	37,640			
Other complications of birth, puerperium affecting mgmt			1,257	16,731			
Other mental conditions			1,152				
Other complications of pregnancy			999	16,150			
Anxiety, somatoform, dissociative, & personality disorders			889				
Substance-related mental disorders			876	22,402	22,074		
Preadult disorders			606				
Deficiency and other anemia			556	11,079	13,737	24,074	7,703
Essential hypertension				13,886	51,139	74,737	16,343
Residual codes, unclassified				9,857	14,558		
Other nutritional, endocrine, and metabolic disorders				6,659	12,758		
Coronary atherosclerosis and other heart disease					41,642	76,584	13,039
Diabetes mellitus without complication					25,582	36,328	5,814
Disorders of lipid metabolism					18,670	23,956	
Chronic obstructive pulmonary disease and bronchiectasis					13,172	29,072	5,951
Cardiac dysrhythmias						34,219	10,856
Congestive heart failure, nonhypertensive						30,484	10,381
Senility and organic mental disorders						17,578	11,999
Urinary tract infections							7,139
Total of Top 10 Co-morbidities	59,932	15,734	10,072	153,873	234,321	384,425	102,873
Total # of Co-morbidities	82,547	35,381	24,787	415,039	603,701	930,607	235,472

Note: The Shadowed boxes show the highest frequency by age group.

**Table 6. Top 10 Principal Diagnoses Admitted through Emergency Room (ER)
Louisiana, 2002-2003**

Rank	ER Principal Diagnoses 2002	# admit through ER	% admit through ER	ER Principal Diagnoses 2003	# admit through ER	% admit through ER
1	Congestive heart failure, nonhypertensive	13,578	6.0	Congestive heart failure, nonhypertensive	13,819	6.3
2	Pneumonia (except that caused by TB or STDs)	13,303	5.9	Pneumonia (except that caused by TB or STDs)	12,973	6.0
3	Nonspecific chest pain	9,237	4.1	Nonspecific chest pain	8,280	3.8
4	Coronary atherosclerosis and other heart disease	8,803	3.9	Coronary atherosclerosis and other heart disease	7,761	3.6
5	Fluid and electrolyte disorders	7,224	3.2	Acute cerebrovascular disease	6,108	2.8
6	Chronic obstructive pulmonary disease and bronchiectasis	6,545	2.9	Fluid and electrolyte disorders	6,000	2.8
7	Acute cerebrovascular disease	6,425	2.8	Acute myocardial infarction	5,890	2.7
8	Acute myocardial infarction	6,208	2.7	Urinary tract infections	5,885	2.7
9	Urinary tract infections	6,019	2.7	Chronic obstructive pulmonary disease and bronchiectasis	5,850	2.7
10	Cardiac dysrhythmias	5,196	2.3	Skin and subcutaneous tissue infections	5,277	2.4
Total of Top 10 through ER				Total of Top 10 through ER	77,843	35.8
Total # of ER admissions				Total # of ER admissions	217,719	100.0

Note: Shadowed areas indicate rank unchanged for this two-year period

Table 7. Top 10 Principal Diagnoses Admitted Through Emergency Room (ER) by Age Group. Louisiana 2003

Principal Diagnosis	Age Group in Years						
	< 1 yr	1-12	13-17	18-44	45-64	65-84	85 &+
Acute bronchitis	797	276					
Pneumonia (except that caused by TB or STDs)	388	995		1,408	2,827	5,224	2,034
Fluid and electrolyte disorders	268	812				2,158	923
Other upper respiratory infections	205	262					
Other perinatal conditions	180						
Fever of unknown origin	150						
Viral infection	150						
Asthma	147	956	105				
Urinary tract infections	129					2,436	1,343
Other lower respiratory disease	118						
Skin and subcutaneous tissue infections		454	155	1,870	1,488		
Epilepsy, convulsions		419					
Intestinal infection		268					
Noninfectious gastroenteritis		238					
Appendicitis and other appendiceal conditions		228	221	905			
Affective disorders			318	1,797			
Fracture of lower limb			138				
Sickle cell anemia			136	1,439			
Other mental conditions			110				
Poisoning by other medications and drugs			110				
Intracranial injury			108				
Diabetes mellitus with complications			103	1,333	1,626		
Nonspecific chest pain				1,669	4,112	2,193	
Other complications of pregnancy				1,296			
Schizophrenia and related disorders				1,179			
Biliary tract disease				1,090			
Congestive heart failure, nonhypertensive					3,819	7,121	2,187
Coronary atherosclerosis and other heart disease					3,555	3,156	
Acute myocardial infarction					2,235	2,547	706
Chronic obstructive pulmonary disease and bronchiectasis					1,833	3,244	
Acute cerebrovascular disease					1,831	3,062	866
Cardiac dysrhythmias					1,360	2,855	609
Septicemia (except in labor)							868
Fracture of neck of femur (hip)							841
Aspiration pneumonitis, food/vomitus							545
Total of Top 10 ER Admissions	2,532	4,908	1,504	13,986	24,686	33,996	10,922
Total Number of ER Admissions	3,795	8,357	3,803	46,844	60,462	73,698	20,760

Note: The shadowed boxes show the highest frequency by age group.

Table 8. Top 10 Principal Procedures Louisiana, 2002-2003

Rank	2002			2003		
	Principal Procedures	#	%	Principal Procedures	#	%
1	Low Cervical Cesarean Section	15,557	5.0	Low Cervical Cesarean Section	14,162	4.7
2	Circumcision	13,760	4.4	Other Procedures to assist delivery	11,886	4.0
3	Other Procedures to assist delivery	13,164	4.2	Circumcision	11,126	3.7
4	Left Heart Cardiac Catheterization	10,680	3.4	Left Heart Cardiac Catheterization	9,594	3.2
5	Single Vessel Percutaneous Transluminal Coronary Angioplasty (PTCA)	9,115	2.9	Single Vessel Percutaneous Transluminal Coronary Angioplasty (PTCA)	8,472	2.8
6	Esophagogastroduodenoscopy with closed biopsy	7,497	2.4	Transfusion of Packed Cells	7,314	2.4
7	Transfusion of Packed Cells	7,322	2.3	Esophagogastroduodenoscopy with closed biopsy	6,956	2.3
8	Total Abdominal Hysterectomy	7,210	2.3	Venous Catheterization, not classified elsewhere	6,603	2.2
9	Venous Catheterization, not classified elsewhere	6,433	2.1	Hemodialysis	6,187	2.1
10	Hemodialysis	6,178	2.0	Prophylactic Administration of Vaccine	6,005	2.0
	Total of Top 10 Procedures	96,916	31.1	Total of Top 10 Procedures	88,305	29.5
	Total # of Procedures	311,903	100.0	Total # of procedures	299,044	100.0

Note: Shadowed areas indicate rank unchanged for this two year period.

Procedure codings are based on CCS codes.

**Table 9. Top 10 Highest Average Charged Principal Diagnoses
Louisiana, 2002-2003**

Rank	2002 Principal Diagnoses	Avg* Charges	Avg ** LOS	2003 Principal Diagnoses	Avg* Charges	Avg** LOS
1	Respiratory distress syndrome	\$75,331	20	Intrauterine hypoxia and birth asphyxia	\$453,690	77
2	Leukemias	\$70,439	13	Short gestation, low birth weight, and fetal growth retardation	\$136,566	33
3	Short gestation, low birth weight, and fetal growth retardation	\$58,404	15	Respiratory distress syndrome	\$105,451	22
4	Respiratory failure, insufficiency, arrest (adult)	\$52,575	14	Leukemias	\$75,811	14
5	Spinal cord injury	\$48,964	14	Spinal cord injury	\$69,062	15
6	Heart valve disorders	\$48,331	8	Heart valve disorders	\$67,323	8
7	Cancer, other respiratory and intrathoracic	\$46,816	9	Respiratory failure, insufficiency, arrest (adult)	\$57,690	13
8	Other CNS infection and poliomyelitis	\$46,711	17	Other CNS infection and poliomyelitis	\$54,228	16
9	Cancer of stomach	\$46,017	12	Aortic, peripheral, and visceral artery aneurysms	\$53,102	7
10	Other acquired deformities	\$45,278	5	Cardiac and circulatory congenital anomalies	\$52,190	7

Note: Shadowed areas indicate Rank unchanged for this two year period.

** Average charges per stay*

*** Average length of stay (LOS) in hospital (in days)*

**Table 10. Top 10 Least Average Charged Principal Diagnoses
Louisiana, 2002-2003**

Rank	2002 Principal Diagnoses	Avg* Charges	Avg** LOS	2003 Principal Diagnoses	Avg* charges	Avg** LOS
1	Other screening for suspected conditions (not mental disorders or infectious disease)	\$725	0	Hemolytic jaundice and perinatal jaundice	\$3,476	2
2	Hemolytic jaundice and perinatal jaundice	\$2,140	2	Medical examination/evaluation	\$3,799	3
3	*** History of mental disorder, behavioral problems, observation & screening for mental condition	\$3,098	3	History of mental disorder, behavioral problems, observation & screening for mental condition	\$4,019	5
4	Medical examination/evaluation	\$3,363	2	Immunizations and screening for infectious disease	\$5,249	5
5	Immunizations and screening for infectious disease	\$3,608	3	Other screening for suspected conditions (not mental disorders or infectious disease)	\$5,416	2
6	Mental retardation	\$4,046	6	Diabetes or abnormal glucose tolerance complicating pregnancy, childbirth,	\$5,930	3
7	Otitis media and related conditions	\$4,341	3	Mental retardation	\$6,005	3
8	Allergic reactions	\$4,717	2	Substance-related mental disorders	\$6,159	5
9	Umbilical cord complication	\$4,848	2	Induced abortion	\$6,217	2
10	Noninfectious gastroenteritis	\$4,916	3	Allergic reactions	\$6,238	3

Note: * Average charges per stay

** Average length of stay in hospital (in days)

*** Rank 3 originally occupied by 'not mapped' (\$ 2650, 1)

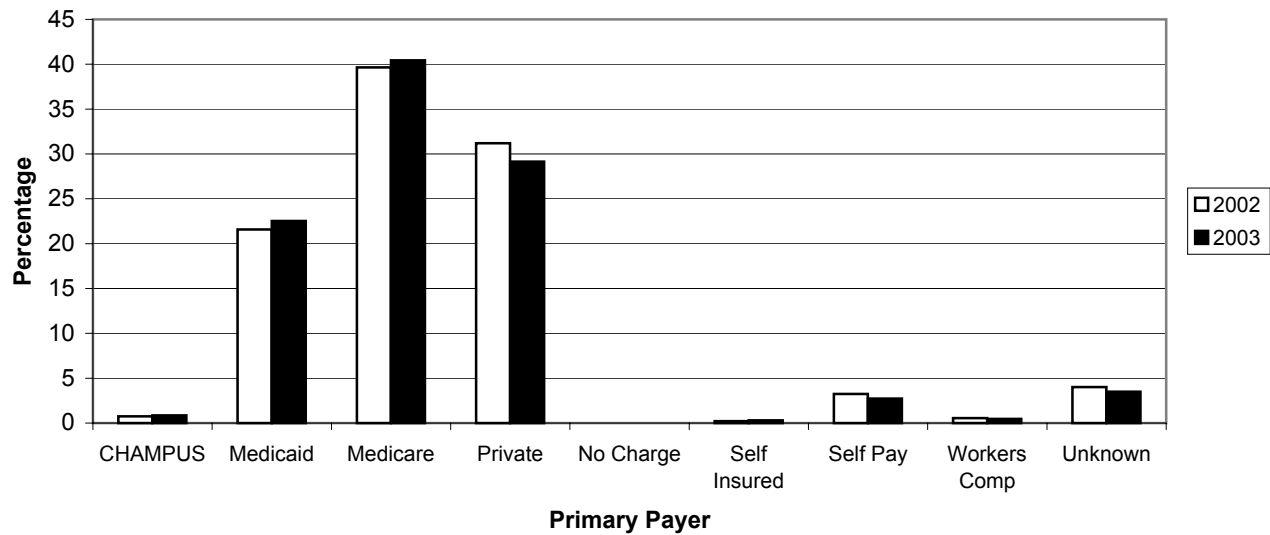
**Table 11. Top 10 Principal Diagnoses with the Longest Average Hospital Stay
Louisiana, 2002-2003**

Rank	2002 Principal Diagnoses	Avg* Charges	Avg** LOS	2003 Principal Diagnoses	Avg* Charges	Avg** LOS
1	Respiratory distress syndrome	\$75,331	20	Intrauterine hypoxia and birth asphyxia	\$453,690	77
2	Other CNS infection and poliomyelitis	\$46,711	17	Short gestation, low birth weight, and fetal growth retardation	\$136,566	33
3	Short gestation, low birth weight, and fetal growth retardation	\$58,404	15	Respiratory distress syndrome	\$105,451	22
4	Respiratory failure, insufficiency, arrest (adult)	\$52,575	14	Late effects of cerebrovascular disease	\$32,681	17
5	Spinal cord injury	\$48,964	14	Other CNS infection and poliomyelitis	\$54,228	16
6	Chronic ulcer of skin	\$32,276	14	Chronic ulcer of skin	\$39,302	16
7	Late effects of cerebrovascular disease	\$22,682	14	Spinal cord injury	\$69,062	15
8	Leukemias	\$70,439	13	Other aftercare	\$36,745	15
9	Preadult disorders	\$12,905	13	Leukemias	\$75,811	14
10	Schizophrenia and related disorders	\$12,952	12	Rehabilitation care, fitting of prostheses, and adjustment of devices	\$26,230	13

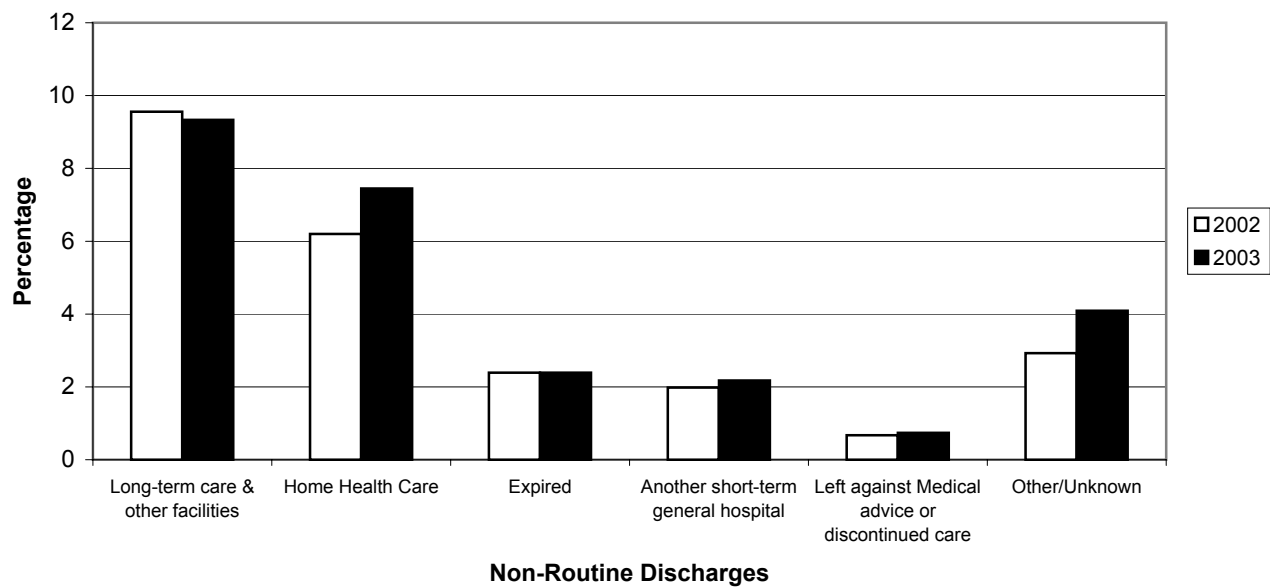
Note: * Average charges per stay

**Average length of stay (LOS) in hospital (in days)

**Chart 7. Hospital Discharges by Primary Payer
Louisiana, 2002-2003**



**Chart 8. Non-Routine Discharges
Louisiana, 2002-2003**



**Table 12. Top 10 Principal Diagnoses Charged to Medicare
Louisiana, 2002-2003**

Rank	Principal Diagnoses 2002	# of Discharges	% of all Discharges	Principal Diagnoses 2003	# of Discharges	% of all Discharges
1	Congestive heart failure, nonhypertensive	15,483	6.7	Congestive heart failure, nonhypertensive	15,514	7.1
2	Pneumonia (except that caused by TB or STDs)	12,758	5.5	Pneumonia (except that caused by TB or STDs)	12,485	5.7
3	Coronary atherosclerosis and other heart disease	12,107	5.3	Coronary atherosclerosis and other heart disease	10,944	5.0
4	* Chronic obstructive pulmonary disease and bronchiectasis	7,312	3.2	Rehabilitation care, fitting of prostheses, and devices	8,587	3.9
5	Cardiac dysrhythmias	6,646	2.9	Cardiac dysrhythmias	6,531	3.0
6	Fluid and electrolyte disorders	6,553	2.8	Chronic obstructive pulmonary disease and bronchiectasis	6,522	3.0
7	Acute cerebrovascular disease	5,943	2.6	Urinary tract infections	6,017	2.7
8	Urinary tract infections	5,854	2.5	Acute cerebrovascular disease	5,658	2.6
9	Complication of device, implant or graft	5,669	2.5	Fluid and electrolyte disorders	5,537	2.5
10	Acute myocardial infarction	5,616	2.4	Complication of device, implant or graft	5,466	2.5
Total of Top 10 paid by Medicare		83,941	36.5	Total of Top 10 Paid by Medicare	83,261	37.9
Total # of Discharges paid by Medicare		229,939	100.0	Total # of Discharges paid by Medicare	219,653	100.0

Note: Shadowed areas indicate rank unchanged for this two year period.

** Rank 4 originally occupied by Missing Values (11336, 4.9)*

**Table 13. Top 10 Principal Diagnoses Charged to Private Insurers
Louisiana, 2002-2003**

Rank	Principal Diagnoses 2002	# of discharges	% of all discharges	Principal Diagnoses 2003	# of discharges	% of all discharges
1	Liveborn	17,552	9.7	Liveborn	13,084	8.3
2	Coronary atherosclerosis and other heart disease	7,277	4.0	Coronary atherosclerosis and other heart disease	6,741	4.3
3	Nonspecific chest pain	5,633	3.1	Nonspecific chest pain	4,755	3.0
4	Pneumonia (except that caused by TB or STDs)	5,185	2.9	Pneumonia (except that caused by TB or STDs)	4,531	2.9
5	Spondylosis, intervertebral disc disorders, other back problems	4,633	2.6	Spondylosis, intervertebral disc disorders, other back problems	3,996	2.5
6	* Congestive heart failure, nonhypertensive	3,575	2.0	Congestive heart failure, nonhypertensive	3,283	2.1
7	Fluid and electrolyte disorders	3,506	1.9	Skin and subcutaneous tissue infections	3,241	2.0
8	Other complications of birth, puerperium affecting management of mother	3,077	1.7	Affective disorders	2,975	1.9
9	Acute myocardial infarction	3,001	1.7	Fluid and electrolyte disorders	2,814	1.8
10	Affective disorders	2,945	1.6	Acute myocardial infarction	2,740	1.7
Total of Top 10 Paid by Private Insurers		56,384	31.2	Total of Top 10 Paid by Private Insurers	48,160	30.4
Total # of Discharges Paid by Private Insurers		180,944	100.0	Total # of Discharges Paid by Private Insurers	158,279	100.0

Note: Shadowed areas indicate rank unchanged for this two year period.

** Rank 6 originally occupied by Missing Values (4027, 2.2)*

**Table 14. Top 10 Principal Diagnoses Charged to Medicaid
Louisiana, 2002-2003**

Rank	Principal Diagnoses 2002	# of discharges	% of all discharges	Principal Diagnoses 2003	# of discharges	% of all discharges
1	Liveborn	19,877	15.9	Liveborn	20,315	16.6
2	Other complications of pregnancy	5,399	4.3	Other complications of pregnancy	5,435	4.4
3	Other complications of birth, puerperium affecting management of mother	5,170	4.1	Other complications of birth, puerperium affecting management of mother	4,836	4.0
4	Pneumonia (except that caused by TB or STDs)	4,764	3.8	Pneumonia (except that caused by TB or STDs)	4,417	3.6
5	Acute bronchitis	3,277	2.6	Schizophrenia and related disorders	3,202	2.6
6	Asthma	3,207	2.6	Affective disorders	2,969	2.4
7	Trauma to perineum and vulva	3,083	2.5	Asthma	2,959	2.4
8	Schizophrenia and related disorders	3,079	2.5	Previous C-section	2,958	2.4
9	Previous C-section	3,016	2.4	Fluid and electrolyte disorders	2,912	2.4
10	Fluid and electrolyte disorders	2,964	2.4	Trauma to perineum and vulva	2,715	2.2
Total of Top 10 Paid by Medicaid				Total of Top 10 Paid by Medicaid	52,718	43.1
Total # of Discharges Paid by Medicaid				Total # of Discharges Paid by Medicaid	122,365	100.0

Note: Shadowed areas indicate rank unchanged for this two year period.

**Table 15. Top 10 Principal Diagnoses of Patients who Leave against Medical Advice
Louisiana, 2002-2003**

Rank	Principal Diagnoses 2002	# of discharges	% of all discharges	Principal Diagnoses 2003	# of discharges	% of all discharges
1	Substance-related mental disorders	479	12.3	Substance-related mental disorders	591	14.7
2	Nonspecific chest pain	214	5.5	Nonspecific chest pain	199	5.0
3	Alcohol-related mental disorders	150	3.8	Congestive heart failure, nonhypertensive	167	4.2
4	Coronary atherosclerosis and other heart disease	141	3.6	Pneumonia (except that caused by TB or STDs)	143	3.6
5	Congestive heart failure, nonhypertensive	119	3.1	Alcohol-related mental disorders	139	3.5
6	Skin and subcutaneous tissue infections	111	2.8	Skin and subcutaneous tissue infections	131	3.3
7	Pneumonia (except that caused by TB or STDs)	109	2.8	Coronary atherosclerosis and other heart disease	126	3.1
8	Diabetes mellitus with complications	108	2.8	Diabetes mellitus with complications	91	2.3
9	* Affective disorders	85	2.2	Affective disorders	91	2.3
10	Chronic obstructive pulmonary disease and bronchiectasis	81	2.1	Chronic obstructive pulmonary disease and bronchiectasis	88	2.2
Total of Top 10 Leave Against Medical Advice				Total of Top 10 Leave Against Medical Advice	1,766	44.0
Total # of Discharges Leave Against Med. Advice				Total # of Discharges Leave Against Med. Advice	4,015	100.0

Note: Shadowed areas indicate rank unchanged for this two year period.

** Rank 9 originally occupied by Missing Values (94, 2.4)*

**Table 16. Top 10 Principal Diagnoses of Patients Discharges to LTC* & other Facilities
Louisiana, 2003**

Rank	2002 Principal Diagnoses	# of Discharges	% of all Discharges	2003 Principal Diagnoses	# of Discharges	% of all Discharges
1	Pneumonia (except that caused by TB or STD)	3,998	7.2	Pneumonia (except that caused by TB or STD)	3,871	7.6
2	Congestive heart failure, nonhypertensive	2,781	5.0	Urinary tract infections	2,695	5.3
3	Urinary tract infections	2,683	4.8	Congestive heart failure, nonhypertensive	2,633	5.2
4	Acute cerebrovascular disease	2,566	4.6	Acute cerebrovascular disease	2,030	4.0
5	Fluid and electrolyte disorders	2,179	3.9	Septicemia (except in labor)	1,873	3.7
6	Septicemia (except in labor)	2,015	3.6	Fluid and electrolyte disorders	1,631	3.2
7	Osteoarthritis	1,745	3.2	Fracture of neck of femur (hip)	1,590	3.1
8	Fracture of neck of femur (hip)	1,651	3.0	Senility and organic mental disorders	1,390	2.7
9	Senility and organic mental disorders	1,431	2.6	Rehabilitation care, fitting of prostheses, and adjustment of devices	1,368	2.7
10	Chronic obstructive pulmonary disease and bronchiectasis	1,429	2.6	Aspiration pneumonitis, food/vomit	1,236	2.4
Total of Top 10 Discharge to LTC & other Facilities				Total of Top 10 Discharge to LTC & other Facilities	20,317	40.1
Total # of Discharge to LTC & other Facilities				Total # of Discharge to LTC & other Facilities	50,633	100.0

Note: Shadowed areas indicate rank unchanged for this two-year period.

**LTC=Long Term Care.*

LTC & other facilities includes skilled nursing facilities, intermediate care facilities, and another type (non short-term-hospital) of institution.

**Table 17. Top 10 Principal Diagnoses of Discharges Resulting in in-hospital Death
Louisiana, 2003**

Rank	2002 Principal Diagnoses	# of Discharges	% of all Discharges	2003 Principal Diagnoses	# of Discharges	% of all Discharges
1	Septicemia (except in labor)	1,260	9.1	Septicemia (except in labor)	1,161	8.9
2	Pneumonia (except that caused by TB or STDs)	1,124	8.1	Pneumonia (except that caused by TB or STDs)	1,069	8.2
3	Acute cerebrovascular disease	921	6.6	Acute cerebrovascular disease	878	6.8
4	Congestive heart failure, nonhypertensive	892	6.4	Congestive heart failure, nonhypertensive	871	6.7
5	Acute myocardial infarction	797	5.7	Acute myocardial infarction	777	6.0
6	Respiratory failure, insufficiency, arrest (adult)	660	4.8	Respiratory failure, insufficiency, arrest (adult)	633	4.9
7	Aspiration pneumonitis, food/vomit	495	3.6	Aspiration pneumonitis, food/vomit	426	3.3
8	Cancer of bronchus, lung	385	2.8	Cancer of bronchus, lung	357	2.7
9	Secondary malignancies	359	2.6	Secondary malignancies	330	2.5
10	Fluid and electrolyte disorders	309	2.2	Acute and unspecified renal failure	269	2.1
Total of Top 10 with in-hospital Death		7,202	51.9	Total of Top 10 with in-hospital Death	6,771	52.1
Total # of Discharges with in-hospital Death		13,871	100.0	Total # of Discharges with in-hospital Death	12,995	100.0

Note: Shadowed areas indicate rank unchanged for this two-year period.

**Table 18. Top 3 In-hospital Death Counts by Principal Diagnoses and Age Group
Louisiana, 2003**

Principal Diagnoses	Discharges by Age Group (Years)						
	< 1	1-12	13-17	18-44	45-64	65-84	85 &+
Liveborn	190						
Other perinatal conditions	7						
Short gestation, low birth weight, and fetal growth retardation	6						
Respiratory failure, insufficiency, arrest (adult)		6	2				
Intracranial injury		3	3	60			
Cardiac and circulatory congenital anomalies		2					
Complication of device, implant or graft		2	1				
Other injuries and conditions due to external causes		2	1				
Pneumonia (except that caused by TB or STDs)		2	2	45	146	506	367
Diabetes mellitus with complications			2				
Residual codes, unclassified			2				
Septicemia (except in labor)			2		220	573	322
Aspiration pneumonitis, food/vomitus			1				
Cancer of bone and connective tissue			1				
Cardiac arrest and ventricular fibrillation			1				
Coma, stupor, and brain damage			1				
Crushing injury or internal injury			1				
Fluid and electrolyte disorders			1				
Leukemias			1				
Other disorders of stomach and duodenum			1				
Peri-, endo-, & myocarditis, cardiomyopathy (except that caused by TB)			1				
HIV infection				81			
Acute cerebrovascular disease				60	227		
Congestive heart failure, nonhypertensive						483	237
Total of Top 3 in-hospital Deaths	203	17	24	246	593	1,562	926
Total in-hospital Deaths in 2003	239	33	24	841	2,738	6,338	2,782

Note: Shadowed boxes indicate highest frequency for that particular age group.

**** Values less than 30

Hospital Inpatient Discharge Data



Louisiana vs. U.S. Summary 2003

State vs. United States 2003

This section summarizes information about hospital discharge data in Louisiana relative to the United States for 2003.

Louisiana and the U.S.* share most of the same top ten principal diagnoses for hospitalization. In 2003, liveborn, pneumonia (except that caused by tuberculosis or STDs), congestive heart failure, nonhypertensive, and coronary atherosclerosis, were the top four diagnoses in both the U.S. and Louisiana (*Table 19, pgs. 30-31*).

At least five of the top ten procedures during hospital stays were related to pregnancy, childbirth, and perinatal care in the United States. In Louisiana, only four of the top ten procedures were related to pregnancy, childbirth, and perinatal care (*Table 20, pgs. 32-33*).

Total amounts charged for principal diagnoses in both the U.S.* and Louisiana are shown in Table 21, pgs. 34-35. For 2003, coronary atherosclerosis topped the list with the highest total charges in both Louisiana and United States. Congestive heart failure, nonhypertensive was 2nd ranked for Louisiana and 3rd for United States. Pneumonia (except that caused by tuberculosis or STDs) was 3rd and 4th ranked respectively for Louisiana and United States.

The top three principal diagnoses, along with their corresponding top five procedures, are shown in Tables 22, pgs. 36-37. Average hospital charges per admission and, average lengths of stay per discharge are also listed.

* Not all states are included

**Table 19a. Top 10 Principal Diagnoses Discharges
Louisiana vs. U.S.*, 2002**

Louisiana						U.S.*				
Rank	Principal Diagnosis	Discharges	%	Avg** Charges	Avg*** LOS	Principal Diagnosis	Discharges	%	Avg** Charges	Avg*** LOS
1	Liveborn	42,155	7.3	\$6,371	3.8	Liveborn	4,154,780	11.0	\$5,188	3.1
2	Pneumonia (except that caused by TB or STDs)	23,757	4.1	\$15,729	5.9	Coronary atherosclerosis and other heart disease	1,292,533	3.4	\$29,839	3.6
3	Coronary atherosclerosis and other heart diseases	21,950	3.8	\$26,005	3.7	Pneumonia (except that caused by TB or STDs)	1,275,079	3.4	\$18,379	5.8
4	Congestive heart failure, nonhypertensive	21,601	3.7	\$17,657	5.5	Congestive heart failure, Nonhypertensive	1,057,673	2.8	\$20,600	5.6
5	Fluid and electrolyte disorders	13,481	2.3	\$7,979	3.8	Nonspecific Chest pain	884,996	2.3	\$9,387	1.9
6	Nonspecific chest pain	13,059	2.3	\$7,931	2.0	Trauma to vulva and perineum	804,199	2.1	\$5,665	2.0
7	Chronic obstructive pulmonary disease and bronchiectasis	11,272	1.9	\$14,688	5.4	Acute myocardial infarction	764,133	2.0	\$36,668	5.4
8	Affective disorders	10,590	1.8	\$9,385	8.5	Cardiac dysrhythmias	712,821	1.9	\$20,172	3.6
9	Cardiac dysrhythmias	10,090	1.7	\$15,891	3.5	Other maternal complications of birth and puerperium	693,752	1.8	\$7,831	2.6
10	Acute myocardial infarction	9,854	1.7	\$33,568	5.8	Affective disorders	654,648	1.7	\$11,500	7.9

*Source: HCUPnet, Healthcare Cost and Utilization Project. Agency for Healthcare Research and Quality, Rockville, MD

<http://www.ahrq.gov/data/hcup/hcupnet.htm>

Note: Shaded areas indicate the same rank in both Louisiana and U.S.

**Average charges per stay

*** Average length of stay (LOS) in hospital (in days)

**Table 19b. Top 10 Principal Diagnoses Discharges
Louisiana vs. U.S.*, 2003**

Louisiana						U.S.*				
Rank	Principal Diagnosis	Discharges	%	Avg** Charges	Avg*** LOS	Principal Diagnosis	Discharges	%	Ave** Charges	Ave*** LOS
1	Liveborn	36,594	6.7	\$7,815	4.1	Liveborn	4,089,219	10.7	\$6,071	3.2
2	Pneumonia (except that caused by TB or STDs)	22,461	4.1	\$19,193	6.0	Pneumonia (except that caused by TB and STDs)	1,314,590	3.4	\$19,817	5.7
3	Congestive heart failure, nonhypertensive	21,627	4.0	\$20,543	5.5	Coronary atherosclerosis	1,256,548	3.3	\$35,143	3.5
4	Coronary atherosclerosis and other heart disease	20,164	3.7	\$31,877	3.5	Congestive heart failure, nonhypertensive	1,119,934	2.9	\$23,924	5.5
5	Rehabilitation care, fitting of prostheses, and adjustment of devices	12,038	2.2	\$26,230	13.3	Nonspecific chest pain	862,117	2.3	\$10,904	1.8
6	Nonspecific chest pain	11,821	2.2	\$9,545	2.0	Acute myocardial infarction	750,719	2.0	\$41,928	5.4
7	Fluid and electrolyte disorders	11,761	2.2	\$9,008	3.6	Trauma to perineum and vulva	748,166	2.0	\$6,176	2.0
8	Affective disorders	11,425	2.1	\$10,670	8.6	Affective disorders	713,882	1.9	\$12,098	7.3
9	Skin and subcutaneous tissue infections	10,689	2.0	\$11,403	4.9	Other complications of birth, puerperium affecting management of the mother	712,227	1.9	\$8,820	2.7
10	Chronic obstructive pulmonary disease and bronchiectasis	10,020	1.8	\$17,005	5.3	Cardiac dysrhythmias	708,041	1.9	\$23,071	3.5

*Source: HCUPnet, Healthcare Cost and Utilization Project. Agency for Healthcare Research and Quality, Rockville, MD

<http://www.ahrq.gov/data/hcup/hcupnet.htm>

Note: Shadowed areas indicate the same rank in both Louisiana and U.S.

**Average charges per stay

*** Average length of stay (LOS) in hospital (in days)

Table 20a. Top 10 Principal Procedures Discharges
Louisiana vs. U.S.*, 2002

Louisiana				U.S.*		
Rank	Principal Procedures	Discharges	%	Principal Procedure	Discharges	%
1	Cesarean section	15,557	2.7	Other procedures to assist delivery	1,406,961	3.7
2	Circumcision	13,760	2.4	Circumcision	1,163,893	3.1
3	Other procedures to assist delivery	13,164	2.3	Cesarean section	1,100,157	2.9
4	Diagnostic cardiac catheterization, coronary arteriography	10,680	1.8	Repair of obstetric laceration	698,633	1.8
5	PTCA (percutaneous transluminal coronary angioplasty)	9,115	1.6	Diagnostic cardiac catheterization, coronary arteriography	697,686	1.8
6	Upper gastrointestinal (GI) endoscopy, biopsy	7,497	1.3	Upper gastrointestinal (GI) endoscopy, biopsy	692,829	1.8
7	Transfusion of Packed cells	7,322	1.3	PTCA (percutaneous transluminal coronary angioplasty)	692,621	1.8
8	Total abdominal Hysterectomy	7,210	1.2	Total abdominal Hysterectomy	640,565	1.7
9	Venous Catheterization	6,433	1.1	Respiratory intubation and mechanical ventilation	585,501	1.5
10	Hemodialysis	6,178	1.1	Vaccinations	523,142	1.4

*Source: HCUPnet, Healthcare Cost and Utilization Project. Agency for Healthcare Research and Quality, Rockville, MD

<http://www.ahrq.gov/data/hcup/hcupnet.htm>

Note: Shadowed areas indicate the same rank in both Louisiana and U.S.

**Table 20b. Top 10 Principal Procedures Discharges
Louisiana vs. U.S.*, 2003**

Louisiana				U.S.*		
Rank	Principal Procedures	Discharges	%	Principal Procedure	Discharges	%
1	Cesarean section	14,517	2.7	Other procedures to assist delivery	1,333,659	5.7
2	Other procedures to assist delivery	12,315	2.3	Cesarean section	1,168,280	5.0
3	Diagnostic cardiac catheterization, coronary arteriography	11,373	2.1	Circumcision	1,093,322	4.7
4	Upper gastrointestinal endoscopy, biopsy	11,239	2.1	Upper gastrointestinal (GI) endoscopy	712,105	3.1
5	Circumcision	11,126	2.0	Diagnostic cardiac catheterization, coronary arteriography	707,077	3.0
6	Percutaneous transluminal coronary angioplasty (PTCA)	11,042	2.0	Repair of obstetric laceration	694,422	3.0
7	Respiratory intubation and mechanical ventilation	8,231	1.5	Percutaneous transluminal coronary angioplasty (PTCA)	675,673	2.9
8	Blood transfusion	7,946	1.5	Respiratory intubation and mechanical ventilation	616,788	2.6
9	Hysterectomy, abdominal and vaginal	7,683	1.4	Hysterectomy	588,225	2.5
10	Other vascular catheterization, not heart	7,117	1.3	Vaccinations	555,707	2.4

*Source: HCUPnet, Healthcare Cost and Utilization Project. Agency for Healthcare Research and Quality, Rockville, MD

Note: Shadowed areas indicate the same rank in both Louisiana and U.S.

**Table 21a. Top 10 Charges for Principal Discharges
Louisiana vs. U.S.*, 2002**

Louisiana					U.S.*			
Rank	Principal Diagnosis	Discharges	%	Aggregate charges	Principal Diagnosis	Discharges	%	Aggregate charges
1	Coronary atherosclerosis and other heart disease	21,950	3.8	\$570,812,291	Coronary atherosclerosis and other heart disease	1,292,533	3.4	\$38,386,743,717
2	Congestive heart failure, nonhypertensive	21,601	3.7	\$381,407,479	Acute myocardial infarction	764,133	2.0	\$27,831,196,203
3	Pneumonia (except that caused by TB or STDs)	23,757	4.1	\$373,667,702	Pneumonia (except that caused by TB or STDs)	1,275,079	3.4	\$23,452,411,970
4	** Acute myocardial infarction	9,854	1.7	\$330,775,685	Congestive heart failure, nonhypertensive	1,057,673	2.8	\$21,751,588,818
5	Liveborn	42,155	7.3	\$268,560,837	Liveborn	4,154,780	11.0	\$21,463,990,060
6	Complication of medical device, implant or graft	9,200	1.6	\$260,017,530	Complication of medical device, implant or graft	589,077	1.6	\$18,355,021,124
7	Acute cerebrovascular disease	9,304	1.6	\$190,814,838	Osteoarthritis	553,022	1.5	\$15,088,876,893
8	Spondylosis, intervertebral disc disorders, other back problems	9,385	1.6	\$175,666,408	Cardiac dysrhythmias	712,821	1.9	\$14,321,600,025
9	Septicemia (except in labor)	6,814	1.2	\$174,047,388	Acute cerebrovascular disease	564,129	1.5	\$13,892,781,242
10	Chronic obstructive pulmonary disease and bronchiectasis	11,272	1.9	\$165,564,520	Spondylosis, intervertebral disc disorders, other back problems	633,717	1.7	\$13,336,718,693

*Source: HCUPnet, Healthcare Cost and Utilization Project. Agency for Healthcare Research and Quality, Rockville, MD
<http://www.ahrq.gov/data/hcup/hcupnet.htm>

Note: Shadowed areas indicate the same rank in both Louisiana and U.S.

** Rank 4 for Louisiana originally occupied by Missing Values (18204, 3.1, and \$370,752,043)

**Table 21b. Top 10 Charges for Principal Discharges
Louisiana vs. U.S.*, 2003**

Louisiana					U.S.*			
Rank	Principal Diagnosis	Discharges	%	Aggregate charges	Principal Diagnosis	Discharges	%	Aggregate charges
1	Coronary atherosclerosis and other heart disease	20,164	3.7	\$642,767,501	Hardening of the heart arteries and other heart disease	1,256,548	3.3	\$44,158,244,278
2	Congestive heart failure, nonhypertensive	21,627	4.0	\$444,281,849	Heart attack (acute myocardial infarction)	750,719	2.0	\$31,475,951,499
3	Pneumonia (except that caused by TB or STD)	22,461	4.1	\$431,105,038	Congestive heart failure	1,119,934	2.9	\$26,793,235,129
4	Acute myocardial infarction	9,153	1.7	\$366,013,535	Pneumonia	1,314,590	3.4	\$26,051,607,813
5	Complication of device, implant or graft	9,125	1.7	\$329,600,030	Newborn infant	4,089,219	10.7	\$24,823,692,504
6	Rehabilitation care, fitting of prostheses, and adjustment of devices	12,038	2.2	\$315,759,700	Complication of medical device, implant or graft	597,070	1.6	\$22,557,497,096
7	Liveborn	36,594	6.7	\$285,984,712	Osteoarthritis	584,876	1.5	\$17,955,325,553
8	Acute cerebrovascular disease	8,860	1.6	\$211,820,698	Spondylosis, intervertebral disc disorders	658,121	1.7	\$16,703,830,868
9	Septicemia (except in labor)	6,632	1.2	\$210,963,261	Acute cerebrovascular disease	559,655	1.5	\$16,530,943,197
10	Spondylosis, intervertebral disc disorders, other back problems	7,934	1.5	\$204,367,350	Cardiac dysrhythmias	708,041	1.9	\$16,334,881,166

*Source: HCUPnet, Healthcare Cost and Utilization Project. Agency for Healthcare Research and Quality, Rockville, MD

<http://www.ahrq.gov/data/hcup/hcupnet.htm>

Note: Shadowed areas indicate the same rank in both Louisiana and U.S.

**Table 22a. Top 3 Principal Diagnoses with Corresponding Top 5 Principal Procedures
Louisiana vs. U.S.*, 2002**

Louisiana					U.S.*				
	Principal Diagnoses & Top 5 Principal Procedures	# of Discharges	Avg*** Charges	Avg** LOS		Principal Diagnoses & Top 5 Principal Procedures	# of Discharges	Avg*** Charges	Avg** LOS
1	Liveborn	42,155	\$6,371	3.8		Liveborn	4,154,780	\$5,188	3.1
	Circumcision	13,689	\$2,935	2.8		Circumcision	1,155,436	\$2,586	2.5
	Ophthalmologic, otologic diagnosis and treatment	1,662	\$3,559	2.6		Prophylactic vaccinations and inoculations	516,729	\$2,378	2.3
	Respiratory intubation, mechanical ventilation	1,031	\$79,685	24.3		Ophthalmologic, otologic diagnosis and treatment	133,270	\$2,694	2.5
	Other vascular catheterization, not heart	498	\$62,321	22.2		Respiratory intubation and mechanical ventilation	91,060	\$62,111	18.7
	Other respiratory therapy	410	\$5,550	4.8		Other therapeutic procedures	73,733	\$18,083	8.0
2	Pneumonia (except that caused by TB or STDs)	23,757	\$15,729	5.9		Coronary atherosclerosis	1,292,533	\$29,839	3.6
	Other therapeutic procedures	747	\$19,457	4.5		Percutaneous coronary angioplasty (PTCA)	400,386	\$30,233	2.1
	Respiratory intubation, mechanical ventilation	733	\$67,818	12.4		Diagnostic catheterization, coronary arteriography	254,872	\$18,322	2.9
	Diagnostic bronchoscopy and biopsy of bronchus	627	\$30,072	10.0		Coronary artery bypass graft (CABG)	228,613	\$64,995	8.1
	Other vascular catheterization, not heart	495	\$33,167	11.0		Cardiac stress tests	12,848	\$11,879	2.6
	Blood transfusion	454	\$25,735	8.5		Cardiac pacemaker or cardioverter/defibrillator	10,155	\$87,239	6.1
3	Coronary Atherosclerosis	21,950	\$26,005	3.7		Pneumonia (except that caused by TB or STDs)	1,275,079	\$18,379	5.8
	Percutaneous coronary angioplasty (PTCA)	7,382	\$26,570	2.3		Respiratory intubation and mechanical ventilation	52,009	\$65,198	11.8
	Diagnostic catheterization, coronary arteriography	4,774	\$15,532	3.0		Diagnostic bronchoscopy and biopsy of bronchus	35,180	\$35,362	9.8
	Coronary artery bypass graft (CABG)	3,467	\$58,817	8.4		Other vascular catheterization, not heart	27,933	\$29,684	9.1
	Heart valve procedures	140	\$94,755	11.5		Blood transfusion	27,846	\$22,095	7.4
	Cardiac stress tests	137	\$4,244	2.7		Other therapeutic procedures	23,238	\$14,153	5.6

*Source: HCUPnet, Healthcare Cost and Utilization Project. Agency for Healthcare Research and Quality, Rockville,
http://www.ahrq.gov/data/hcup/hcupnet.htm

Note: Shadowed areas indicate the same rank in both Louisiana and U.S.

** Average length of stay (LOS) in hospital (in days)

***Average charges per stay

**Table 22b. Top 3 Principal Diagnoses with Corresponding Top 5 Principal Procedures
Louisiana vs. U.S.*, 2003**

Louisiana					U.S.*				
	Principal Diagnoses & Top 5 Principal Procedures	# of Discharges	Avg*** Charges	Avg** LOS		Principal Diagnoses & Top 5 Principal Procedures	# of Discharges	Avg*** Charges	Avg** LOS
1	Liveborn	36,594	\$7,815	4.1		Liveborn	4,089,219	\$6,096	3.2
	Circumcision	11,071	\$3,650	2.8		Circumcision	1,084,673	\$2,954	2.5
	Prophylactic vaccinations and inoculations	5,969	\$2,343	2.7		Prophylactic vaccinations and inoculations	547,493	\$3,346	2.4
	Ophthalmologic and otologic diagnosis and treatment	1,648	\$4,003	2.8		Ophthalmologic and otologic diagnosis and treatment	215,202	\$2,420	2.4
	Respiratory intubation and mechanical ventilation	1,067	\$96,447	27.3		Respiratory intubation and mechanical ventilation	89,626	\$79,091	20.8
	Other therapeutic procedures	834	\$14,763	8.3		Other therapeutic procedures	86,594	\$18,392	7.9
2	Pneumonia (except that caused by TB or STDs)	22,461	\$19,193	6.0		Pneumonia (except that caused by TB and STDs)	1,314,590	\$19,771	5.7
	Respiratory intubation and mechanical ventilation	833	\$72,350	11.7		Respiratory intubation and mechanical ventilation	53,304	\$68,115	11.3
	Diagnostic bronchoscopy and biopsy of bronchus	742	\$36,987	10.2		Other therapeutic procedures	39,956	\$14,466	4.9
	Other therapeutic procedures	591	\$22,187	5.2		Diagnostic bronchoscopy and biopsy of bronchus	38,628	\$37,697	9.6
	Other vascular catheterization, not heart	509	\$38,637	11.1		Blood transfusion	30,203	\$24,067	7.1
	Blood transfusion	503	\$25,488	7.9		Other vascular catheterization, not heart	29,948	\$32,118	9.0
3	Congestive heart failure, nonhypertensive	21,627	\$20,543	5.5		Coronary atherosclerosis	1,256,548	\$35,003	3.5
	Diagnostic cardiac catheterization, coronary arteriography	1,100	\$29,423	6.3		Percutaneous coronary angioplasty (PTCA)	382,989	\$34,994	2.1
	Hemodialysis	874	\$15,475	3.8		Diagnostic cardiac catheterization, coronary arteriography	246,713	\$20,739	2.8
	Respiratory intubation and mechanical ventilation	563	\$41,808	7.8		Coronary artery bypass graft (CABG)	210,342	\$77,088	8.1
	Insertion, revision, replacement, removal of cardiac pacemaker or cardioverter/defibrillator	501	\$66,026	7.0		Other non-OR therapeutic cardiovascular procedures	51,359	\$36,578	1.8
	Blood transfusion	425	\$24,075	6.8		Insertion, revision, replacement, removal of cardiac pacemaker or cardioverter/defibrillator	12,701	\$100,619	5.5

*Source: HCUPnet, Healthcare Cost and Utilization Project. Agency for Healthcare Research
and Quality, Rockville, MD
<http://www.ahrq.gov/data/hcup/hcupnet.htm>

Note: Shadowed areas indicate the same rank in both Louisiana and U.S.

** Average length of stay (LOS) in hospital (in days)

***Average charges per stay

Hospital Inpatient Discharge Data

Louisiana

LAHIDD **Report**



**Parish
Summary**
2003

Parish Summary

This section summarizes information about inpatient hospital discharge data by the patient's parish of residence for the year 2003. All parish percentages for principal diagnoses are derived from the total number of discharges for each parish.

The highest numbers of discharges in the year 2003 were from the following parishes: **Orleans (67,815)**, **Jefferson (55,214)**, **East Baton Rouge (36,343)**, **St. Tammany (26,929)**, **Ouachita (23,343)**. (*Table 23, pg. 40*).

Table 24, pg. 41 shows the percentage of discharges for Louisiana's top 5 principal diagnoses by parish. *

Table 25, pg. 42 illustrates percentages of parish discharges for top 5 principal diagnoses resulting in in-hospital death. *

Table 26, pgs. 43-44 shows percentages and average charges for each payer by parish. The payers considered for this table are as follows: Medicare, Private (Blue Cross, Blue Shield & all other HMO's), Medicaid, No Charge (Free, Charity, Special Research, and Teaching), CHAMPUS (now called TRICARE), Self Pay, Worker's Compensation, Self Insured, and Other-Unknown-Missing.

Each parish percentage in the following tables is calculated with respect to the total of all the discharges for a particular diagnosis.

Table 27, pg. 45 illustrates the percentage of Louisiana's top five diagnoses by parish.

Table 28, pg. 46 shows the percentage of Louisiana's top five diagnoses resulting in in-hospital death by parish. Each parish percentage is derived as a total of all the discharges for that particular diagnosis resulting in an in-hospital death.

Table 29, pg. 47 presents percentages of discharge by status and is the source data for **Chart 6, pg 11**.

Table 30, pgs. 48-50 shows Number of Discharges by Principal Diagnoses and Health Region.

* *The highest values have been highlighted.*

**Table 23. Hospital Inpatient Discharges by Parish of Residence
Louisiana, 2003**

PARISH	2003	
	# of Discharges	% of total Discharges
ACADIA	6,371	1.2
ALLEN	1,692	0.3
ASCENSION	7,387	1.4
ASSUMPTION	2,558	0.5
AVOUELLES	7,045	1.3
BEAUREGARD	1,144	0.2
BIENVILLE	1,305	0.2
BOSSIER	4,852	0.9
CADDO	16,304	3.0
CALCASIEU	15,944	2.9
CALDWELL	1,233	0.2
CAMERON	601	0.1
CATAHOULA	1,984	0.4
CLAIBORNE	1,520	0.3
CONCORDIA	1,765	0.3
DE SOTO	1,547	0.3
EAST BATON ROUGE	36,343	6.7
EAST CARROLL	986	0.2
EAST FELICIANA	2,714	0.5
EVANGELINE	7,469	1.4
FRANKLIN	2,962	0.5
GRANT	3,050	0.6
IBERIA	7,681	1.4
IBERVILLE	4,212	0.8
JACKSON	2,756	0.5
JEFFERSON	55,214	10.2
JEFFERSON DAVIS	5,240	1.0
LA SALLE	3,074	0.6
LAFAYETTE	20,913	3.8
LAFOURCHE	7,423	1.4
LINCOLN	4,573	0.8
LIVINGSTON	8,367	1.5
MADISON	1,254	0.2
MOREHOUSE	2,937	0.5
NATCHITOCHES	5,584	1.0
ORLEANS	67,815	12.5
OUACHITA	23,343	4.3
PLAQUEMINES	3,353	0.6
POINTE COUPEE	1,565	0.3
RAPIDES	20,581	3.8
RED RIVER	1,808	0.3
RICHLAND	3,898	0.7
SABINE	2,646	0.5
ST. BERNARD	12,646	2.3
ST. CHARLES	5,817	1.1
ST. HELENA	1,843	0.3
ST. JAMES	1,655	0.3
ST. JOHN	6,180	1.1
ST. LANDRY	12,994	2.4
ST. MARTIN	5,443	1.0
ST. MARY	8,132	1.5
ST. TAMMANY	26,929	5.0
TANGIPAHOA	16,196	3.0
TENSAS	1,639	0.3
TERREBONNE	8,809	1.6
UNION	3,538	0.7
VERMILION	6,779	1.2
VERNON	9,031	1.7
WASHINGTON	5,885	1.1
WEBSTER	6,263	1.2
WEST BATON ROUGE	2,167	0.4
WEST CARROLL	1,295	0.2
WEST FELICIANA	954	0.2
WINN	3,258	0.6
OUT OF STATE	14,751	2.7
MISSING	2	0.0
All Discharges	543,219	100.0

**Table 24. Percent of Total Parish Discharges for Louisiana's Top 5 Diagnoses
Louisiana, 2003**

PARISH	Liveborn	Pneumonia (except that caused by TB or STD)	Congestive heart failure, nonhypertensive	Coronary atherosclerosis and other heart disease	Rehab care, fitting of prostheses, & adjustment of devices	Total # of Discharges by Parish
ACADIA	2.6	4.5	3.2	5.3	0.7	6,371
ALLEN	3.4	9.6	2.8	3.2	1.6	1,692
ASCENSION	2.7	4.4	3.8	2.7	1.7	7,387
ASSUMPTION	3.7	4.3	4.2	2.9	2.8	2,558
AVOUELLES	8.2	4.9	4.4	4.7	1.7	7,045
BEAUREGARD	2.5	8.5	6.9	3.8	0.5	1,144
BIENVILLE	1.8	8.9	4.8	3.1	2.0	1,305
BOSSIER	8.8	3.0	2.3	2.1	4.6	4,852
CADDO	5.6	3.5	3.6	2.2	3.1	16,304
CALCASIEU	1.1	5.5	4.3	2.6	1.9	15,944
CALDWELL	4.4	4.5	4.8	4.9	1.9	1,233
CAMERON	2.0	4.7	4.7	3.0	2.8	601
CATAHOULA	4.5	6.4	6.0	7.8	1.7	1,984
CLAIBORNE	2.8	1.8	2.9	4.3	2.5	1,520
CONCORDIA	0.6	5.7	6.4	8.4	0.8	1,765
DE SOTO	4.4	4.1	3.9	2.8	3.2	1,547
EAST BATON ROUGE	2.7	3.9	3.5	2.5	1.8	36,343
EAST CARROLL	7.4	5.9	4.0	4.5	1.6	986
EAST FELICIANA	3.3	5.9	4.3	3.4	0.8	2,714
EVANGELINE	4.9	6.5	4.0	4.5	1.8	7,469
FRANKLIN	4.4	5.4	4.2	4.1	2.3	2,962
GRANT	7.7	4.8	3.3	6.8	1.2	3,050
IBERIA	8.6	3.1	3.1	6.3	2.6	7,681
IBERVILLE	2.9	5.2	4.2	3.4	3.8	4,212
JACKSON	1.3	10.8	5.4	3.7	0.8	2,756
JEFFERSON	10.6	3.0	4.0	3.2	2.4	55,214
JEFFERSON DAVIS	2.5	5.7	4.7	2.9	0.9	5,240
LA SALLE	4.4	7.7	6.4	6.3	1.0	3,074
LAFAYETTE	5.6	3.6	4.0	5.9	2.6	20,913
LAFOURCHE	7.3	5.2	4.5	1.7	2.9	7,423
LINCOLN	2.3	4.1	4.2	3.1	0.5	4,573
LIVINGSTON	3.9	3.9	3.6	3.8	2.2	8,367
MADISON	1.8	4.9	2.7	1.8	0.6	1,254
MOREHOUSE	4.6	2.8	4.9	7.1	3.8	2,937
NATCHITOCHES	3.0	10.3	3.3	4.4	0.9	5,584
ORLEANS	10.9	2.7	4.4	2.1	2.2	67,815
OUACHITA	7.0	3.7	3.6	3.6	2.8	23,343
PLAQUEMINES	12.3	4.1	4.0	2.7	2.0	3,353
POINTE COUPEE	2.4	2.0	2.9	2.9	2.2	1,565
RAPIDES	8.2	4.8	3.6	4.5	1.9	20,581
RED RIVER	2.3	13.3	3.4	3.2	1.0	1,808
RICHLAND	5.1	6.3	4.2	4.7	1.7	3,898
SABINE	3.3	6.8	3.9	4.0	1.0	2,646
ST. BERNARD	7.3	4.0	4.5	4.4	3.3	12,646
ST. CHARLES	10.6	2.9	2.8	3.3	1.7	5,817
ST. HELENA	3.9	5.0	3.3	3.0	1.7	1,843
ST. JAMES	8.0	3.1	5.3	3.1	1.3	1,655
ST. JOHN	11.7	3.2	4.5	3.9	1.3	6,180
ST. LANDRY	4.9	4.2	4.0	5.0	4.0	12,994
ST. MARTIN	6.8	3.0	5.2	5.5	2.4	5,443
ST. MARY	5.8	3.3	5.4	6.2	2.2	8,132
ST. TAMMANY	9.6	4.1	3.2	4.5	2.2	26,929
TANGIPAHOA	8.6	4.5	5.3	3.2	2.5	16,196
TENSAS	6.3	2.9	5.7	3.8	2.1	1,639
TERREBONNE	7.6	3.7	3.4	1.1	2.9	8,809
UNION	4.2	4.0	3.1	4.4	2.3	3,538
VERMILION	2.9	4.0	4.3	8.7	1.4	6,779
VERNON	5.6	7.3	4.7	4.1	0.7	9,031
WASHINGTON	9.3	3.2	3.4	6.4	1.7	5,885
WEBSTER	2.2	6.1	3.6	3.5	3.6	6,263
WEST BATON ROUGE	2.6	3.6	3.6	3.6	1.8	2,167
WEST CARROLL	3.4	4.2	4.1	8.1	3.9	1,295
WEST FELICIANA	3.4	5.5	3.9	4.1	1.8	954
WINN	2.3	8.4	4.0	4.8	0.4	3,258
MISSING	50.0	0.0	0.0	0.0	0.0	2
OUT OF STATE	3.3	2.8	2.6	4.3	2.7	14,751
All Discharges	6.7	4.1	4.0	3.7	2.2	543,219

Table 25. Percent of Total Parish Discharges for Louisiana's Top 5 Principal Diagnoses resulting in In-hospital Death, Louisiana 2003

PARISH	Septicemia (except in labor)	Pneumonia (except that caused by TB or STDs)	Acute cerebrovascular disease	Congestive heart failure, nonhypertensive	Acute myocardial infarction	Total # of discharges by Parish
ACADIA	10.0	10.0	5.3	6.7	10.0	150
ALLEN	7.7	3.8	3.8	0.0	0.0	26
ASCENSION	10.8	7.6	8.6	5.9	6.5	185
ASSUMPTION	10.5	9.2	6.6	3.9	2.6	76
AVOUELLES	8.3	10.1	9.5	6.5	11.2	169
BEAUREGARD	3.2	3.2	9.7	12.9	9.7	31
BIENVILLE	13.8	17.2	6.9	6.9	6.9	29
BOSSIER	11.5	6.3	4.2	4.2	2.1	96
CADDO	9.4	8.5	5.1	6.0	2.3	435
CALCASIEU	7.7	10.4	6.1	6.3	2.9	442
CALDWELL	20.8	8.3	4.2	12.5	4.2	24
CAMERON	0.0	11.1	0.0	0.0	11.1	9
CATAHOULA	14.0	14.0	16.3	7.0	4.7	43
CLAIBORNE	12.5	3.1	6.3	3.1	3.1	32
CONCORDIA	10.5	10.5	0.0	2.6	2.6	38
DE SOTO	8.5	10.6	10.6	0.0	4.3	47
EAST BATON ROUGE	11.9	6.6	7.6	3.9	7.0	994
EAST CARROLL	23.8	0.0	9.5	0.0	4.8	21
EAST FELICIANA	16.9	13.0	3.9	6.5	2.6	77
EVANGELINE	13.9	12.2	8.9	5.0	3.3	180
FRANKLIN	8.4	9.6	2.4	9.6	7.2	83
GRANT	10.5	12.3	12.3	7.0	5.3	57
IBERIA	10.2	7.0	6.4	4.8	8.6	187
IBERVILLE	9.0	12.3	9.0	4.1	4.9	122
JACKSON	12.9	4.3	11.4	8.6	10.0	70
JEFFERSON	5.8	8.2	6.4	9.0	6.2	1,127
JEFFERSON DAVIS	15.0	7.5	3.7	7.5	6.5	107
LA SALLE	7.5	11.3	5.7	3.8	7.5	53
LAFAYETTE	6.4	6.7	5.6	7.3	5.5	657
LAFOURCHE	8.0	13.3	7.3	10.7	5.3	150
LINCOLN	14.5	6.4	3.6	2.7	3.6	110
LIVINGSTON	5.0	8.6	9.4	9.4	7.2	139
MADISON	0.0	5.4	2.7	2.7	13.5	37
MOREHOUSE	11.5	7.7	13.5	3.8	3.8	52
NATCHITOCHES	6.4	14.2	9.9	4.3	5.0	141
ORLEANS	9.5	7.0	7.3	6.4	4.5	1,627
OUACHITA	8.0	6.9	5.9	9.0	8.8	477
PLAQUEMINES	14.0	5.3	3.5	8.8	5.3	57
POINTE COUPEE	5.4	5.4	7.1	1.8	7.1	56
RAPIDES	13.3	11.2	5.6	7.3	3.9	518
RED RIVER	7.5	15.0	7.5	5.0	5.0	40
RICHLAND	4.7	15.3	9.4	3.5	11.8	85
SABINE	7.5	9.0	9.0	9.0	7.5	67
ST. BERNARD	5.7	8.3	4.6	8.3	6.0	349
ST. CHARLES	5.6	10.2	4.6	2.8	13.0	108
ST. HELENA	7.1	7.1	7.1	4.8	4.8	42
ST. JAMES	9.6	9.6	11.5	13.5	5.8	52
ST. JOHN	10.3	4.8	8.9	5.5	8.2	146
ST. LANDRY	7.7	9.6	7.7	8.0	5.4	312
ST. MARTIN	9.5	2.7	8.8	9.5	10.9	147
ST. MARY	12.6	6.5	7.8	6.5	6.9	231
ST. TAMMANY	5.7	6.8	6.6	7.2	7.5	544
TANGIPAHOA	8.5	8.5	5.8	7.1	7.7	364
TENSAS	9.7	3.2	16.1	9.7	6.5	31
TERREBONNE	6.5	5.1	4.3	10.1	0.7	138
UNION	8.3	11.1	9.7	4.2	2.8	72
VERMILION	4.6	6.2	8.7	7.2	8.7	195
VERNON	10.8	11.6	7.6	8.8	8.0	250
WASHINGTON	7.8	6.4	7.1	9.2	7.8	141
WEBSTER	13.7	16.7	3.6	5.4	5.4	168
WEST BATON ROUGE	3.6	3.6	7.1	0.0	8.9	56
WEST CARROLL	7.7	15.4	11.5	7.7	3.8	26
WEST FELICIANA	5.9	11.8	8.8	2.9	5.9	34
WINN	28.3	7.5	2.8	3.8	5.7	106
MISSING, UNKNOWN, BLANK	0.0	0.0	0.0	0.0	0.0	0
OUT OF STATE	3.3	6.1	5.3	6.7	4.2	360
% of Discharges	8.9	8.2	6.8	6.7	6.0	12,995

**Table 26. Percentage and Average Charges for Source of Charges by Parish
Louisiana, 2003**

PARISH	CHAMPUS		Medicaid		Medicare		Private		Total # of Discharges
	%	Avg*\$	%	Avg*\$	%	Avg*\$	%	Avg*\$	
ACADIA	0.2	21,079	30.5	7,363	37.9	16,914	22.9	13,448	6,371
ALLEN	0.7	7,977	25.8	7,511	44.0	16,998	23.7	13,206	1,692
ASCENSION	0.9	17,296	17.2	10,490	35.8	16,752	39.3	11,902	7,387
ASSUMPTION	0.2	15,949	21.9	10,130	46.2	10,981	21.4	10,009	2,558
AVOUELLES	0.5	10,860	25.6	10,869	45.9	19,075	22.9	13,695	7,045
BEAUREGARD	0.9	13,909	18.9	11,261	49.4	18,831	25.6	15,253	1,144
BIENVILLE	1.1	7,554	22.1	7,461	55.2	14,266	14.5	10,855	1,305
BOSSIER	13.6	11,194	16.8	11,836	47.0	21,130	20.2	17,270	4,852
CADDO	1.8	15,768	21.2	14,721	57.3	21,134	17.1	17,825	16,304
CALCASIEU	0.4	14,899	16.6	11,424	50.4	20,558	27.3	15,625	15,944
CALDWELL	5.4	6,750	23.4	10,383	42.2	26,904	20.1	19,021	1,233
CAMERON	0.3	21,805	13.0	13,598	50.1	22,157	29.0	18,374	601
CATAHOULA	1.1	7,709	22.9	9,703	49.7	18,536	21.4	16,729	1,984
CLAIBORNE	0.9	12,275	21.9	8,360	49.3	19,651	20.6	14,560	1,520
CONCORDIA	0.3	17,739	21.6	11,496	57.7	17,843	15.2	16,034	1,765
DE SOTO	1.5	9,859	16.9	9,612	57.6	20,909	21.1	15,294	1,547
EAST BATON ROUGE	1.0	14,620	18.6	9,051	40.6	12,727	33.9	12,100	36,343
EAST CARROLL	1.6	10,927	39.0	5,173	42.3	20,939	11.2	17,065	986
EAST FELICIANA	1.0	16,161	19.7	7,451	46.5	11,439	25.6	10,319	2,714
EVANGELINE	0.4	8,038	29.1	10,395	46.8	17,819	12.4	13,892	7,469
FRANKLIN	1.0	6,469	24.0	7,687	50.2	17,373	19.9	14,887	2,962
GRANT	1.1	17,942	25.2	9,902	40.0	22,755	28.0	13,568	3,050
IBERIA	0.4	18,033	25.6	10,654	39.9	21,524	27.2	16,002	7,681
IBERVILLE	0.5	19,414	22.9	13,608	41.4	18,674	26.4	15,551	4,212
JACKSON	0.3	12,565	16.9	9,293	57.7	14,909	20.5	11,911	2,756
JEFFERSON	0.3	14,332	21.3	16,038	31.3	28,057	37.6	25,765	55,214
JEFFERSON DAVIS	0.2	6,938	20.4	7,443	48.5	12,368	25.5	11,107	5,240
LA SALLE	0.6	10,059	21.3	8,241	55.8	15,364	19.3	13,070	3,074
LAFAYETTE	0.4	20,585	19.1	12,101	45.0	21,567	27.9	18,464	20,913
LAFOURCHE	0.3	9,637	24.1	8,929	42.1	13,387	23.8	13,193	7,423
LINCOLN	0.8	9,215	22.4	11,094	42.6	17,844	28.2	12,382	4,573
LIVINGSTON	0.9	15,853	18.5	11,702	32.2	20,397	40.7	15,009	8,367
MADISON	26.8	6,998	24.4	6,698	23.5	16,775	12.0	10,112	1,254
MOREHOUSE	0.1	24,081	22.3	12,636	48.7	25,845	21.3	20,599	2,937
NATCHITOCHES	0.8	9,794	27.4	8,438	44.2	17,097	22.7	10,121	5,584
ORLEANS	0.2	18,559	30.8	16,662	32.1	33,339	28.4	29,751	67,815
OUACHITA	0.6	13,909	22.0	10,134	40.7	21,422	29.7	14,694	23,343
PLAQUEMINES	2.2	10,820	23.4	17,587	22.3	32,022	45.8	28,781	3,353
POINTE COUPEE	1.1	13,475	18.5	11,557	43.5	14,048	30.2	11,448	1,565
RAPIDES	1.2	13,950	27.0	10,177	41.5	20,985	25.3	15,240	20,581
RED RIVER	0.2	5,771	19.9	7,512	59.7	13,507	14.1	12,567	1,808
RICHLAND	0.3	14,164	22.9	7,730	52.5	15,193	20.0	13,852	3,898
SABINE	0.8	20,217	20.7	9,845	54.3	17,846	19.8	14,125	2,646
ST. BERNARD	0.3	21,810	17.7	16,998	42.1	30,510	36.0	24,781	12,646
ST. CHARLES	0.1	8,130	18.5	15,450	32.9	24,040	40.0	19,630	5,817
ST. HELENA	0.9	13,589	22.5	7,933	40.2	9,835	33.5	6,175	1,843
ST. JAMES	0.1	30,905	21.6	10,153	42.2	29,894	29.0	17,299	1,655
ST. JOHN	0.2	13,874	23.9	13,104	35.2	27,058	35.7	19,351	6,180
ST. LANDRY	0.5	23,727	27.3	9,422	45.5	18,891	18.8	12,881	12,994
ST. MARTIN	0.4	11,655	21.6	11,942	45.0	20,734	26.2	15,309	5,443
ST. MARY	0.3	28,081	19.8	10,561	46.6	18,552	21.6	14,998	8,132
ST. TAMMANY	0.5	13,582	16.2	16,614	31.7	32,290	46.2	26,109	26,929
TANGIPAHOA	0.5	14,663	28.4	14,105	42.6	22,433	22.2	16,325	16,196
TENSAS	0.9	7,649	22.5	12,652	36.9	23,494	31.3	25,754	1,639
TERREBONNE	0.3	10,570	31.9	8,228	33.9	15,053	25.1	13,177	8,809
UNION	3.4	6,194	16.9	9,908	39.4	22,471	33.5	14,476	3,538
VERMILION	0.4	16,620	17.5	12,032	49.7	17,492	24.6	18,481	6,779
VERNON	4.1	20,698	22.6	10,171	46.1	21,339	23.6	16,097	9,031
WASHINGTON	0.4	33,099	28.5	15,739	40.4	28,037	24.6	21,604	5,885
WEBSTER	0.7	13,779	22.1	8,380	49.2	14,174	18.5	10,699	6,263
WEST BATON ROUGE	0.9	10,900	20.2	11,142	37.7	13,939	34.9	12,185	2,167
WEST CARROLL	0.2	9,123	16.8	9,883	56.4	24,692	20.5	18,359	1,295
WEST FELICIANA	0.1	14,713	18.0	12,968	45.4	11,462	24.5	11,295	954
WINN	0.5	8,537	22.1	9,223	53.1	15,584	18.7	12,430	3,258
MISSING	0.0	(**)	50.0	2,610	0.0	(**)	50.0	1,219	2
OUT OF STATE	1.7	22,188	7.7	35,034	41.4	34,135	39.2	32,119	14,751
State	0.9	14,321	22.5	12,783	40.4	22,293	29.1	20,011	543,219

Note: (**) Division by zero.

**Table 26. (Cont.) Percentage and Average Charges for Source of Charges by Parish
Louisiana, 2003**

PARISH	Self Insured		Self Pay		Workers Comp		Other, Unknown		Total # of Discharges
	%	Avg*\$	%	Avg*\$	%	Avg*\$	%	Ave*\$	
ACADIA	0.0	12,512	3.9	8,460	0.3	15,004	4.3	10,874	6,371
ALLEN	0.1	76,603	2.4	14,345	0.5	25,336	2.9	8,166	1,692
ASCENSION	0.0	36,405	3.9	9,075	0.7	19,123	2.2	12,334	7,387
ASSUMPTION	0.1	91,544	2.2	8,181	0.5	20,634	7.6	7,744	2,558
AVOUELLES	0.1	86,267	1.8	17,797	0.4	16,300	2.7	10,375	7,045
BEAUREGARD	0.0	(**)	3.4	15,905	0.7	21,763	1.1	8,715	1,144
BIENVILLE	0.0	(**)	4.0	6,978	0.1	14,633	3.1	20,153	1,305
BOSSIER	0.0	(**)	1.3	13,223	0.5	47,149	0.6	15,040	4,852
CADDO	0.0	5,927	1.8	13,468	0.4	18,965	0.4	15,702	16,304
CALCASIEU	0.4	11,275	2.2	14,320	0.7	22,108	2.0	9,326	15,944
CALDWELL	1.1	30,519	0.4	34,467	0.6	11,153	6.9	7,721	1,233
CAMERON	1.0	4,391	2.2	12,470	1.5	16,220	3.0	7,013	601
CATAHOULA	0.1	32,054	1.0	19,201	0.4	24,227	3.3	12,779	1,984
CLAIBORNE	0.1	4,920	2.8	7,040	0.3	14,563	4.0	15,235	1,520
CONCORDIA	0.2	13,745	1.0	22,433	0.6	18,256	3.5	7,520	1,765
DE SOTO	0.0	(**)	1.9	9,063	0.5	19,247	0.5	10,863	1,547
EAST BATON ROUGE	0.0	59,062	2.8	10,694	0.4	21,055	2.7	11,633	36,343
EAST CARROLL	0.2	24,687	0.2	12,543	0.2	51,793	5.3	11,082	986
EAST FELICIANA	0.0	(**)	2.3	13,207	0.9	15,496	3.9	9,469	2,714
EVANGELINE	1.0	7,405	2.2	9,766	0.4	14,411	7.6	7,681	7,469
FRANKLIN	0.3	17,589	0.2	9,242	0.3	25,640	4.1	7,319	2,962
GRANT	0.0	28,335	2.2	17,703	0.7	18,674	2.7	9,044	3,050
IBERIA	0.1	22,449	2.1	14,942	0.7	22,961	3.9	12,411	7,681
IBERVILLE	0.0	(**)	2.4	14,904	0.5	14,420	5.9	15,497	4,212
JACKSON	0.3	19,856	2.0	7,954	0.2	18,837	2.2	9,208	2,756
JEFFERSON	0.7	21,894	4.5	17,792	0.5	32,132	3.8	11,438	55,214
JEFFERSON DAVIS	0.0	621	3.7	7,021	0.6	12,508	1.1	12,023	5,240
LA SALLE	0.0	(**)	0.6	12,845	0.4	23,823	2.0	8,161	3,074
LAFAYETTE	0.2	18,338	3.6	13,875	0.6	24,535	3.2	11,006	20,913
LAFOURCHE	0.1	58,518	2.5	10,801	0.6	13,052	6.5	7,765	7,423
LINCOLN	0.2	10,479	3.5	9,364	0.3	12,376	2.0	9,439	4,573
LIVINGSTON	0.3	13,404	4.0	13,321	0.7	20,595	2.6	13,035	8,367
MADISON	0.6	6,990	6.5	5,188	0.1	26,521	6.1	8,143	1,254
MOREHOUSE	0.2	15,468	0.7	14,512	0.4	17,040	6.2	7,315	2,937
NATCHITOCHES	0.0	(**)	3.8	8,340	0.5	14,135	0.8	11,469	5,584
ORLEANS	0.1	39,108	2.4	25,933	0.3	33,451	5.7	12,023	67,815
OUACHITA	1.3	11,949	0.6	16,277	0.4	20,544	4.7	7,009	23,343
PLAQUEMINES	0.6	18,244	2.6	26,146	0.2	25,979	2.9	18,261	3,353
POINTE COUPEE	0.1	1,908	2.5	11,837	1.2	20,807	3.0	13,552	1,565
RAPIDES	0.0	80,393	2.1	16,296	0.4	21,133	2.5	9,223	20,581
RED RIVER	0.0	(**)	5.5	7,511	0.1	40,444	0.4	17,129	1,808
RICHLAND	0.5	25,856	0.2	6,733	0.2	24,051	3.3	8,153	3,898
SABINE	0.0	(**)	3.2	10,204	0.6	18,586	0.5	22,903	2,646
ST. BERNARD	0.2	41,554	1.3	13,105	0.4	39,622	2.1	10,975	12,646
ST. CHARLES	0.3	27,864	5.1	13,142	0.6	29,950	2.6	13,530	5,817
ST. HELENA	0.2	11,570	0.8	7,170	0.8	5,882	1.0	10,240	1,843
ST. JAMES	0.0	(**)	3.0	6,952	0.3	31,644	3.7	8,828	1,655
ST. JOHN	0.1	23,258	2.0	15,227	0.2	19,809	2.6	12,312	6,180
ST. LANDRY	0.6	6,681	3.4	10,889	0.6	16,577	3.3	10,634	12,994
ST. MARTIN	0.3	7,512	2.3	12,463	0.6	19,462	3.5	14,273	5,443
ST. MARY	0.0	540	1.1	14,199	0.5	24,760	10.1	10,435	8,132
ST. TAMMANY	0.2	33,096	3.4	23,995	0.4	28,485	1.3	13,890	26,929
TANGIPAHOA	0.9	12,358	2.4	17,351	0.4	20,999	2.6	12,098	16,196
TENSAS	1.5	23,781	3.6	18,151	0.3	28,503	3.1	11,809	1,639
TERREBONNE	0.1	51,631	1.0	21,365	0.4	23,075	7.4	7,637	8,809
UNION	0.8	18,163	1.7	9,983	0.4	19,421	3.9	7,117	3,538
VERMILION	0.2	18,651	4.3	6,566	0.8	21,164	2.4	12,260	6,779
VERNON	0.0	5,316	1.8	15,978	0.5	16,996	1.4	18,177	9,031
WASHINGTON	0.0	125,855	0.9	18,507	0.5	27,031	4.7	12,311	5,885
WEBSTER	0.0	9,523	3.0	6,810	0.2	13,473	6.3	20,613	6,263
WEST BATON ROUGE	0.0	(**)	2.7	11,774	0.9	21,337	2.8	8,742	2,167
WEST CARROLL	0.2	7,312	0.6	14,201	0.1	30,402	5.3	6,581	1,295
WEST FELICIANA	0.0	(**)	2.7	9,584	0.4	10,173	8.8	15,902	954
WINN	0.1	8,965	3.6	7,910	0.4	25,571	1.6	11,156	3,258
MISSING	0.0	(**)	0.0	(**)	0.0	(**)	0.0	(**)	2
OUT OF STATE	0.4	41,851	5.5	23,216	1.4	23,616	2.7	18,686	14,751
State	0.3	19,693	2.7	16,046	0.5	23,656	3.5	11,221	543,219

Note: (**) Division by zero.

**Table 27. Percent of Louisiana's Top 5 Principal Diagnoses by Parish
Louisiana, 2003**

PARISH	Liveborn	Pneumonia (except that caused by TB or STDs)	Congestive heart failure, nonhypertensi -ve	Coronary atherosclerosis and other heart disease	Rehab care, fitting of prostheses, & adjustment of devices
ACADIA	0.5	1.3	0.9	1.7	0.4
ALLEN	0.2	0.7	0.2	0.3	0.2
ASCENSION	0.6	1.5	1.3	1.0	1.1
ASSUMPTION	0.3	0.5	0.5	0.4	0.6
AVOUELLES	1.6	1.5	1.4	1.6	1.0
BEAUREGARD	0.1	0.4	0.4	0.2	0.0
BIENVILLE	0.1	0.5	0.3	0.2	0.2
BOSSIER	1.2	0.7	0.5	0.5	1.9
CADDO	2.5	2.5	2.7	1.8	4.2
CALCASIEU	0.5	3.9	3.2	2.0	2.5
CALDWELL	0.1	0.2	0.3	0.3	0.2
CAMERON	0.0	0.1	0.1	0.1	0.1
CATAHOULA	0.2	0.6	0.6	0.8	0.3
CLAIBORNE	0.1	0.1	0.2	0.3	0.3
CONCORDIA	0.0	0.4	0.5	0.7	0.1
DE SOTO	0.2	0.3	0.3	0.2	0.4
EAST BATON ROUGE	2.6	6.3	5.9	4.5	5.4
EAST CARROLL	0.2	0.3	0.2	0.2	0.1
EAST FELICIANA	0.2	0.7	0.5	0.5	0.2
EVANGELINE	1.0	2.2	1.4	1.7	1.1
FRANKLIN	0.4	0.7	0.6	0.6	0.6
GRANT	0.6	0.6	0.5	1.0	0.3
IBERIA	1.8	1.0	1.1	2.4	1.6
IBERVILLE	0.3	1.0	0.8	0.7	1.3
JACKSON	0.1	1.3	0.7	0.5	0.2
JEFFERSON	15.9	7.4	10.2	8.7	10.9
JEFFERSON DAVIS	0.4	1.3	1.1	0.8	0.4
LA SALLE	0.4	1.1	0.9	1.0	0.2
LAFAYETTE	3.2	3.4	3.9	6.1	4.6
LAFOURCHE	1.5	1.7	1.5	0.6	1.8
LINCOLN	0.3	0.8	0.9	0.7	0.2
LIVINGSTON	0.9	1.5	1.4	1.6	1.5
MADISON	0.1	0.3	0.2	0.1	0.1
MOREHOUSE	0.4	0.4	0.7	1.0	0.9
NATCHITOCHES	0.5	2.6	0.9	1.2	0.4
ORLEANS	20.2	8.2	13.7	7.2	12.3
OUACHITA	4.5	3.9	3.9	4.2	5.5
PLAQUEMINES	1.1	0.6	0.6	0.4	0.6
POINTE COUPEE	0.1	0.1	0.2	0.2	0.3
RAPIDES	4.6	4.4	3.4	4.6	3.2
RED RIVER	0.1	1.1	0.3	0.3	0.1
RICHLAND	0.5	1.1	0.8	0.9	0.5
SABINE	0.2	0.8	0.5	0.5	0.2
ST. BERNARD	2.5	2.3	2.7	2.7	3.4
ST. CHARLES	1.7	0.7	0.8	0.9	0.8
ST. HELENA	0.2	0.4	0.3	0.3	0.3
ST. JAMES	0.4	0.2	0.4	0.3	0.2
ST. JOHN	2.0	0.9	1.3	1.2	0.7
ST. LANDRY	1.8	2.4	2.4	3.3	4.3
ST. MARTIN	1.0	0.7	1.3	1.5	1.1
ST. MARY	1.3	1.2	2.0	2.5	1.5
ST. TAMMANY	7.1	5.0	4.0	6.0	5.0
TANGIPAHOA	3.8	3.2	4.0	2.5	3.4
TENSAS	0.3	0.2	0.4	0.3	0.3
TERREBONNE	1.8	1.5	1.4	0.5	2.1
UNION	0.4	0.6	0.5	0.8	0.7
VERMILION	0.5	1.2	1.3	2.9	0.8
VERNON	1.4	2.9	2.0	1.8	0.5
WASHINGTON	1.5	0.8	0.9	1.9	0.8
WEBSTER	0.4	1.7	1.1	1.1	1.9
WEST BATON ROUGE	0.2	0.3	0.4	0.4	0.3
WEST CARROLL	0.1	0.2	0.2	0.5	0.4
WEST FELICIANA	0.1	0.2	0.2	0.2	0.1
WINN	0.2	1.2	0.6	0.8	0.1
MISSING	0.0	0.0	0.0	0.0	0.0
OUT OF STATE	1.3	1.9	1.7	3.2	3.3
Total # of Discharges by Diagnosis	36,594	22,461	21,627	20,164	12,038
Total % of Discharges by Diagnosis	100.0	100.0	100.0	100.0	100.0

**Table 28. Percent of Louisiana's Top 5 Principal Diagnoses resulting in
In-hospital Death by Parish, Louisiana 2003**

PARISH	Septicemia (except in labor)	Pneumonia (except that caused by TB or STDs)	Acute cerebrovasc ular disease	Congestive heart failure, nonhypertensive	Acute myocardial infarction
ACADIA	1.3	1.4	0.9	1.1	1.9
ALLEN	0.2	0.1	0.1	0.0	0.0
ASCENSION	1.7	1.3	1.8	1.3	1.5
ASSUMPTION	0.7	0.7	0.6	0.3	0.3
AVOUELLES	1.2	1.6	1.8	1.3	2.4
BEAUREGARD	0.1	0.1	0.3	0.5	0.4
BIENVILLE	0.3	0.5	0.2	0.2	0.3
BOSSIER	0.9	0.6	0.5	0.5	0.3
CADDO	3.5	3.5	2.5	3.0	1.3
CALCASIEU	2.9	4.3	3.1	3.2	1.7
CALDWELL	0.4	0.2	0.1	0.3	0.1
CAMERON	0.0	0.1	0.0	0.0	0.1
CATAHOULA	0.5	0.6	0.8	0.3	0.3
CLAIBORNE	0.3	0.1	0.2	0.1	0.1
CONCORDIA	0.3	0.4	0.0	0.1	0.1
DE SOTO	0.3	0.5	0.6	0.0	0.3
EAST BATON ROUGE	10.2	6.2	8.7	4.5	9.0
EAST CARROLL	0.4	0.0	0.2	0.0	0.1
EAST FELICIANA	1.1	0.9	0.3	0.6	0.3
EVANGELINE	2.2	2.1	1.8	1.0	0.8
FRANKLIN	0.6	0.7	0.2	0.9	0.8
GRANT	0.5	0.7	0.8	0.5	0.4
IBERIA	1.6	1.2	1.4	1.0	2.1
IBERVILLE	0.9	1.4	1.3	0.6	0.8
JACKSON	0.8	0.3	0.9	0.7	0.9
JEFFERSON	5.6	8.6	8.2	11.6	9.0
JEFFERSON DAVIS	1.4	0.7	0.5	0.9	0.9
LA SALLE	0.3	0.6	0.3	0.2	0.5
LAFAYETTE	3.6	4.1	4.2	5.5	4.6
LAFOURCHE	1.0	1.9	1.3	1.8	1.0
LINCOLN	1.4	0.7	0.5	0.3	0.5
LIVINGSTON	0.6	1.1	1.5	1.5	1.3
MADISON	0.0	0.2	0.1	0.1	0.6
MOREHOUSE	0.5	0.4	0.8	0.2	0.3
NATCHITOCHES	0.8	1.9	1.6	0.7	0.9
ORLEANS	13.3	10.7	13.6	11.9	9.5
OUACHITA	3.3	3.1	3.2	4.9	5.4
PLAQUEMINES	0.7	0.3	0.2	0.6	0.4
POINTE COUPEE	0.3	0.3	0.5	0.1	0.5
RAPIDES	5.9	5.4	3.3	4.4	2.6
RED RIVER	0.3	0.6	0.3	0.2	0.3
RICHLAND	0.3	1.2	0.9	0.3	1.3
SABINE	0.4	0.6	0.7	0.7	0.6
ST. BERNARD	1.7	2.7	1.8	3.3	2.7
ST. CHARLES	0.5	1.0	0.6	0.3	1.8
ST. HELENA	0.3	0.3	0.3	0.2	0.3
ST. JAMES	0.4	0.5	0.7	0.8	0.4
ST. JOHN	1.3	0.7	1.5	0.9	1.5
ST. LANDRY	2.1	2.8	2.7	2.9	2.2
ST. MARTIN	1.2	0.4	1.5	1.6	2.1
ST. MARY	2.5	1.4	2.1	1.7	2.1
ST. TAMMANY	2.7	3.5	4.1	4.5	5.3
TANGIPAHOA	2.7	2.9	2.4	3.0	3.6
TENSAS	0.3	0.1	0.6	0.3	0.3
TERREBONNE	0.8	0.7	0.7	1.6	0.1
UNION	0.5	0.7	0.8	0.3	0.3
VERMILION	0.8	1.1	1.9	1.6	2.2
VERNON	2.3	2.7	2.2	2.5	2.6
WASHINGTON	0.9	0.8	1.1	1.5	1.4
WEBSTER	2.0	2.6	0.7	1.0	1.2
WEST BATON ROUGE	0.2	0.2	0.5	0.0	0.6
WEST CARROLL	0.2	0.4	0.3	0.2	0.1
WEST FELICIANA	0.2	0.4	0.3	0.1	0.3
WINN	2.6	0.7	0.3	0.5	0.8
MISSING	0.0	0.0	0.0	0.0	0.0
OUT OF STATE	1.0	2.1	2.2	2.8	1.9
Total # of In-hospital Death by Diagnosis	1,161	1,069	878	871	777
Total % of In-hospital Death by Diagnosis	100.0	100.0	100.0	100.0	100.0

**Table 29. Percent of Discharge Status by Year
Louisiana, 2002-2003**

Discharge Status	2002		2003	
	Number	Percent	Number	Percent
Discharged to home or self care (routine discharge)	442,332	76.3	401,029	73.8
Long-term care & other facilities	55,353	9.5	50,633	9.3
Another short term general hospital	11,499	2.0	11,810	2.2
Mental Health Center	57	0.0	65	0.0
Home Health Care	35,943	6.2	40,454	7.4
Hospice (home/medical facility)	1,239	0.2	2,212	0.4
In-hospital Death	13,871	2.4	12,995	2.4
Left against medical advice or discontinued care	3,900	0.7	4,015	0.7
Other/Unknown	15,726	2.7	20,006	3.7
Total Discharge Status	579,920	100.0	543,219	100.0

**Table 30. Number of Discharges by Principal Diagnoses and Health Region
Louisiana, 2003**

	Liveborn	Congestive heart failure, nonhypertensive	Pneumonia (except that caused by TB or STD)
ORLEANS	7,402	2,967	1,850
ST. BERNARD	926	574	506
JEFFERSON	5,828	2,211	1,659
PLAQUEMINES	414	135	137
Health Region 1	14,570	5,887	4,152

	Pneumonia (except that caused by TB or STD)	Congestive heart failure, nonhypertensive	Coronary atherosclerosis and other heart disease
EAST FELICIANA	161	118	93
POINTE COUPEE	32	45	45
EAST BATON ROUGE	1,414	1,278	915
WEST BATON ROUGE	78	78	77
WEST FELICIANA	52	37	39
IBERVILLE	219	178	144
ASCENSION	326	284	201
Health Region 2	2,282	2,018	1,514

	Liveborn	Congestive heart failure, nonhypertensive	Pneumonia (except that caused by TB or STD)
ST. MARY	472	443	271
TERREBONNE	671	299	329
ST. JOHN	726	278	197
ASSUMPTION	94	107	111
LAFOURCHE	544	333	389
ST. JAMES	133	87	51
ST. CHARLES	614	164	167
Health Region 3	3,254	1,711	1,515

	Coronary atherosclerosis and other heart disease	Liveborn	Pneumonia (except that caused by TB or STD)
IBERIA	481	664	235
VERMILION	590	194	274
LAFAYETTE	1,236	1,162	755
ST. MARTIN	302	370	165
ACADIA	339	165	285
ST. LANDRY	656	642	541
EVANGELINE	336	366	484
ST. HELENA	56	71	92
Health Region 4	3,996	3,634	2,831

**Table 30. (Cont.) Number of Discharges by Principal Diagnoses and Health Region
Louisiana, 2003**

	Pneumonia (except that caused by TB or STD)	Congestive heart failure, nonhypertensive	Affective disorders
JEFFERSON DAVIS	299	248	106
CALCASIEU	884	687	694
CAMERON	28	28	24
BEAUREGARD	97	79	25
ALLEN	163	48	42
Health Region 5	1,471	1,090	891

	Liveborn	Pneumonia (except that caused by TB or STD)	Coronary atherosclerosis and other heart disease
AVOYELLES	580	344	329
LA SALLE	135	237	193
RAPIDES	1,683	981	935
CATAHOULA	89	127	154
CONCORDIA	10	100	149
VERNON	507	658	368
WINN	76	275	156
GRANT	236	145	206
Health Region 6	3,316	2,867	2,490

	Pneumonia (except that caused by TB or STD)	Liveborn	Congestive heart failure, nonhypertensive
RED RIVER	241	41	61
CADDO	572	907	582
SABINE	180	86	104
NATCHITOCHES	576	167	184
CLAIBORNE	28	43	44
WEBSTER	385	138	228
BOSSIER	147	429	110
BIENVILLE	116	23	63
DE SOTO	64	68	60
Health Region 7	2,309	1,902	1,436

**Table 30. (Cont.) Number of Discharges by Principal Diagnoses and Health Region
Louisiana, 2003**

	Liveborn	Pneumonia (except that caused by TB or STD)	Coronary atherosclerosis and other heart disease
RICHLAND	199	246	182
UNION	147	141	154
FRANKLIN	130	161	121
OUACHITA	1,630	865	851
TENSAS	103	47	63
JACKSON	35	298	103
MADISON	23	62	22
MOREHOUSE	134	81	209
WEST CARROLL	44	54	105
CALDWELL	54	56	61
EAST CARROLL	73	58	44
LINCOLN	105	188	144
Health Region 8	2,677	2,257	2,059

	Liveborn	Coronary atherosclerosis and other heart disease	Pneumonia (except that caused by TB or STD)
ST. TAMMANY	2,593	1,212	1,115
WASHINGTON	545	377	190
TANGIPAHOA	1,392	513	724
LIVINGSTON	328	315	329
Health Region 9	4,858	2,417	2,358

Hospital Inpatient Discharge Data



Technical Notes 2003

TECHNICAL NOTES

In December 1998, the State Health Care Data Clearinghouse began collecting data related to hospital inpatient discharges from Louisiana's licensed hospitals. The information was submitted from acute care, long-term care, psychiatric, rehabilitation, and specialty hospitals.

The Louisiana Hospital Inpatient Discharge Database (LAHIDD) is based on the Health Care Financing Administration (HCFA) Uniform Billing UB-92 information. The LAC 48:V. Chapter 151, Section 15125 lists the required elements for LAHIDD submission.

Diagnoses and Procedures Classification

The diagnosis and procedures grouping methodology used in this report was generated using the Clinical Classifications Software (CCS) developed by the Agency for Healthcare Research and Quality (AHRQ). CCS aggregates the 4,290 procedures and the 15,298 diseases coded according to the International Classification of Diseases, 9th Revision, Clinical Modification (ICD-9-CM) into 260 clinically meaningful disease categories (ref: www.ahcpr.gov/data/hcup/ccsfact.htm).

LAHIDD also uses the Body System classification codes, which includes the following 18 groups of disease categories:

1. Infectious and Parasitic diseases
2. Neoplasms
3. Endocrine, Nutritional, Metabolic and Immune diseases
4. Diseases of the blood and blood-forming organs
5. Mental disorders
6. Diseases of the Nervous System and Sense Organs
7. Diseases of the Circulatory System
8. Diseases of the Respiratory System
9. Diseases of the Digestive System
10. Diseases of the Genitourinary System
11. Complication of pregnancy, childbirth, and the puerperium
12. Diseases of the skin and subcutaneous tissue
13. Diseases of the Musculoskeletal System and Connective Tissue
14. Congenital anomalies
15. Perinatal conditions
16. Injury and Poisoning
17. Other conditions
18. E codes

When comparing 2002 and 2003, data consider the following:

- The data depuration process was different for years 2002 and 2003.
- The number of reporting hospitals differed in year 2002 (131 hospitals) and year 2003 (124 hospitals).
- Types of hospitals reporting the data are different for year 2002 and year 2003. (For instance, in 2002, 108 Acute care hospitals reported to LAHIDD. In 2003, the number went down to 101). Similar changes are seen in other types of hospitals, e.g., Long-term care, Rehabilitation, Pediatric, and Psychiatric.

Hospital Inpatient Discharge Data



Glossary 2003

GLOSSARY

Some terms may not appear in this report.

Admit – A patient admitted to the provider for inpatient care or outpatient service

Admitting Diagnosis – The ICD-9-CM diagnosis code provide at the time of admission as stated by the physician

CHAMPUS – See TRICARE.

Co-morbidities – Coexisting medical problems that are listed as other diagnoses and are not directly related to the principal diagnosis.

Confidential Information – That information defined as confidential by this rule includes, but is not limited to:

- Employer identifiers, facility identifiers, patient or insured identifiers, payer identifiers, or physician or other service provider identifiers;
- Information identified by the identifiers;
- Combinations of data categories derived from part or all hospital discharge database information that would identify or tend to identify an employer, facility, patient or insured person, payer, or physician or other service provider; and
- Information referenced by combinations of these data categories.

Covered Benefit – A health service or item that is included in the health plan, and that is paid for either partially or fully.

Covered Charges – Services or benefits for which a health plan makes either partial or full payment.

Covered Days – The number of days covered by the primary payer, as qualified by the payer organization.

Custodial Care – Non-skilled, personal care, such as help with activities of daily living like bathing, dressing, eating, getting in and out of bed or chair, moving around, and using the bathroom. It may also include care that most people do themselves, like using eye drops.

Data Base – A structured repository of data, consisting of one or more related structured data tables.

Data Category – One of the typically (though not necessarily) non-unique data values of a data element, or to the equivalent labels for these values. For example, the data categories of the data element years may be three in number: "98", "99", "00", and may be labeled "1998", "1999" and "2000", whereas the data categories of the data element patient birth date may have thousands of possible values, some of which are probably uniquely associated with exactly one person.

Data Element – A logical field of a data record or a column of a data table, and includes both the named data elements in this rule, and any other data elements obtained or created by analytic or synthetic methods. Examples: Discharge year, age group, sex, and disease group.

Data Record – The row of a data table, or the set of related rows from related tables in a database.

Data Set – A structured subset of data from a database.

Discharge – A patient release from the hospital or move from one level of care to another. It may include moves from a hospital to a nursing home or to home care.

Discharge Date – Date that the patient was discharged from inpatient care.

External Cause of Injury (E-Code) – The ICD-9-CM code which describes the external cause of the injury, poisoning, or adverse effect.

Health Care Provider – A person who is trained and licensed to give health care. Also, a place licensed to give health care. Physicians, nurses, hospitals, skilled nursing facilities, some assisted living facilities, and certain kinds of home health agencies are examples of health care providers.

Health insurance – Insurance providing coverage of medical, surgical or hospital care in general or for which there is no specific heading.

Hospital – Any institution, place, building or agency, public or private, whether organized for profit or not-for-profit, which provides inpatient healthcare subject to licensure by the Louisiana Department of Health and Hospitals.

Hospital Discharge Information – All billing, medical, and personal information describing a patient, the services received, and charges billed, associated with a single inpatient hospital stay, including all elements of the Uniform Billing form, UB-92.

Hospital Discharge (Data) Record – The structured document, in paper or electronic form, of all the UB-92 data for a single hospital stay, or the data content of that document. This often will include more than one data record.

Hospital Stay or Inpatient Hospital Stay – The period, activities, events, and conditions associated with a patient, from the time of admission to a hospital, to the time of discharge from that hospital. Facilities licensed as hospitals and having different provider numbers are, for the purpose of this definition, distinct hospitals having discrete hospital stays and hospital discharges.

Insurance – Coverage by contract whereby one part indemnifies or guarantees another against loss by a specified contingency.

Intermediary – A data processing agent of a hospital, who is contracted or employed by that hospital to relay their hospital discharge records to the Office of Public Health in compliance with these rules.

Long-term Care – A "variety" of services that help people with health or personal needs and activities of daily living over a period of time. Long-term care can be provided at home, in the community, or in various types of facilities, including nursing homes and assisted living facilities. Most long-term care is custodial care.

Medicaid – A Federal-State health insurance program for certain low-income and needy people. It covers approximately 36 million individuals including children, the aged, blind, and/or disabled, and people who are eligible to receive federally assisted income maintenance payments.

Medicare – The federal health insurance program for people 65 years of age or older, certain younger people with disabilities, and people with End-Stage Renal Disease (permanent kidney failure with dialysis or a transplant, sometimes called ESRD).

No Charge – Medical service for which no payment is due. Example: Free, Charity, Special Research or Teaching.

Non-covered Days – Days of care not covered by the primary payer.

Other Diagnosis Codes – The ICD-9-CM diagnosis codes corresponding to an additional condition that co-exists at the time of admission or develops subsequently, and which have an effect on the treatment or the length of stay.

Patient – An individual awaiting or under medical care and treatment.

Patient or Insured Identifier – Patient name, insured's name, patient address or insured's address (specially including P.O. Box or street address, but not city, 5 digit Zip Code, or State), patient control number, Social Security Number, medical record number, health insurance claim identification number, or information that would identify or tend to identify an individual patient or insured person under whom the patient may be covered.

Payment Received – The amount the patient has paid to the provider for healthcare services.

Payor Identifier – The payor name, payor identification, insured group name, insured group number, or other information that could identify a payor.

Primary Payer – An insurance policy, plans, or programs that pay first on a claim for medical care. This could be Medicare or other health insurance. The patient provides this information at the time of admission.

Principal Diagnosis – The main medical reason for admission to the hospital.

Principal Diagnosis Code – The ICD-9-CM diagnosis code describing the principal diagnosis leading to the admission (or the condition established after study to be chiefly responsible for causing this hospitalization).

Private Insurer Provider – Insurer other than Medicaid, Medicare, TRICARE. Example: Blue Cross/Blue shield, HMO, Other Insurance Companies and the Self-Insured.

Procedure – A measure taken to remedy a health problem or to learn more about it. Surgery, diagnostic tests, and putting in an intravenous line are some examples.

Release – A conditional distribution of hospital discharges information for purposes authorized by the statute or its corresponding rules.

Secure Information – That information which is not subject to release by the Office Of Public Health or any other research panel for any purpose. Secure information includes patient and insured identifiers.

Submit – To deliver, or to cause to be delivered, to the Office Of Public Health, in the form and format specified, by the close of business on the prescribed date (with respect to a submission date, and data, report, surveys, statements or documents required to be submitted to the Louisiana Office of Public Health).

TRICARE (formerly called CHAMPUS) – The United State's government's health insurance program for members of the seven uniformed military services, including active duty members of the military, military retirees, and their eligible dependents.

Uncompensated Care – Medical services for which no payment is received. Uncompensated care includes charity care and bad debts.

Uninsured Patient – A patient who does not have any insurance. He/She will be ether self pay or be provided healthcare free of charge.

Workers Compensation – Insurance or Self insurance that employers are required to carry to cover the medical expenses and lost wages of employees who became ill or are injured at work.

SOURCE:

Louisiana Register, Vol.24, No. 10, October 20, 1998

Health care financing Administration (www.hcfa.gov/medicare.gov/glossary)

Uniform Billing Training Manual –UB-92, Addendum B, and Alphabetic listing of data elements, B1-B19.

ST11843 1PLY UB-92

1		2		3 PATIENT CONTROL NO.				4 TYPE OF BILL										
		5 FED. TAX NO.		6 STATEMENT COVERS PERIOD FROM THROUGH		7 COV D.	8 N-C D.	9 C-I D.	10 L-R D.	11								
12 PATIENT NAME				13 PATIENT ADDRESS														
14 BIRTHDATE		15 SEX	16 MS	17 DATE		ADMISSION 18 HR 19 TYPE 20 SRC		21 D HR	22 STAT	23 MEDICAL RECORD NO.		24		25		CONDITION CODES 26 27 28 29 30		31
32 OCCURRENCE CODE DATE		33 OCCURRENCE CODE DATE		34 OCCURRENCE CODE DATE		35 OCCURRENCE CODE DATE		36 OCCURRENCE CODE DATE		37 OCCURRENCE SPAN FROM THROUGH		38		39		40		41
a		b		c		d		e		f		g		h		i		j
42 REV. CD.		43 DESCRIPTION				44 HCPCS / RATES		45 SERV. DATE		46 SERV. UNIT		47 CHARGES		48 NON-COVERED CHARGES		49		
1		2				3		4		5		6		7		8		9
10		11				12		13		14		15		16		17		18
19		20				21		22		23		24		25		26		27
28		29				30		31		32		33		34		35		36
37		38				39		40		41		42		43		44		45
46		47				48		49		50		51		52		53		54
55		56				57		58		59		60		61		62		63
64		65				66		67		68		69		70		71		72
73		74				75		76		77		78		79		80		81
82		83				84		85		86		87		88		89		90
91		92				93		94		95		96		97		98		99

UNIFORM BILL:**NOTICE: ANYONE WHO MISREPRESENTS OR FALSIFIES ESSENTIAL INFORMATION REQUESTED BY THIS FORM MAY UPON CONVICTION BE SUBJECT TO FINE AND IMPRISONMENT UNDER FEDERAL AND/OR STATE LAW.**

Certifications relevant to the Bill and Information Shown on the Face Hereof: Signatures on the face hereof incorporate the following certifications or verifications where pertinent to this Bill:

1. If third party benefits are indicated as being assigned or in participation status, on the face thereof, appropriate assignments by the insured/ beneficiary and signature of patient or parent or legal guardian covering authorization to release information are on file. Determinations as to the release of medical and financial information should be guided by the particular terms of the release forms that were executed by the patient or the patient's legal representative. The hospital agrees to save harmless, indemnify and defend any insurer who makes payment in reliance upon this certification, from and against any claim to the insurance proceeds when in fact no valid assignment of benefits to the hospital was made.
2. If patient occupied a private room or required private nursing for medical necessity, any required certifications are on file.
3. Physician's certifications and re-certifications, if required by contract or Federal regulations, are on file.
4. For Christian Science Sanitoriums, verifications and if necessary re-verifications of the patient's need for sanitorium services are on file.
5. Signature of patient or his/her representative on certifications, authorization to release information, and payment request, as required be Federal law and regulations (42 USC 1935f, 42 CFR 424.36, 10 USC 1071 thru 1086, 32 CFR 199) and, any other applicable contract regulations, is on file.
6. This claim, to the best of my knowledge, is correct and complete and is in conformance with the Civil Rights Act of 1964 as amended. Records adequately disclosing services will be maintained and necessary information will be furnished to such governmental agencies as required by applicable law.
7. For Medicare purposes:

If the patient has indicated that other health insurance or a state medical assistance agency will pay part of his/her medical expenses and he/she wants information about his/her claim released to them upon their request, necessary authorization is on file. The patient's signature on the provider's request to bill Medicare authorizes any holder of medical and non-medical information, including employment status, and whether the person has employer group health insurance, liability, no-fault, workers' compensation, or other insurance which is responsible to pay for the services for which this Medicare claim is made.

8. For Medicaid purposes:

This is to certify that the foregoing information is true, accurate, and complete.

I understand that payment and satisfaction of this claim will be from Federal and State funds, and that any false claims, statements, or documents, or concealment of a material fact, may be prosecuted under applicable Federal or State Laws.

9. For CHAMPUS purposes:

This is to certify that:

- (a) the information submitted as part of this claim is true, accurate and complete, and, the services shown on this form were medically indicated and necessary for the health of the patient;
- (b) the patient has represented that by a reported residential address outside a military treatment center catchment area he or she does not live within a catchment area of a U.S. military or U.S. Public Health Service medical facility, or if the patient resides within a catchment area of such a facility, a copy of a Non-Availability Statement (DD Form 1251) is on file, or the physician has certified to a medical emergency in any assistance where a copy of a Non-Availability Statement is not on file;
- (c) the patient or the patient's parent or guardian has responded directly to the provider's request to identify all health insurance coverages, and that all such coverages are identified on the face the claim except those that are exclusively supplemental payments to CHAMPUS-determined benefits;
- (d) the amount billed to CHAMPUS has been billed after all such coverages have been billed and paid, excluding Medicaid, and the amount billed to CHAMPUS is that remaining claimed against CHAMPUS benefits;
- (e) the beneficiary's cost share has not been waived by consent or failure to exercise generally accepted billing and collection efforts; and,
- (f) any hospital-based physician under contract, the cost of whose services are allocated in the charges included in this bill, is not an employee or member of the Uniformed Services. For purposes of this certification, an employee of the Uniformed Services is an employee, appointed in civil service (refer to 5 USC 2105), including part-time or intermittent but excluding contract surgeons or other personnel employed by the Uniformed Services through personal service contracts. Similarly, member of the Uniformed Services does not apply to reserve members of the Uniformed Services not on active duty.
- (g) based on the Consolidated Omnibus Budget Reconciliation Act of 1986, all providers participating in Medicare must also participate in CHAMPUS for inpatient hospital services provided pursuant to admissions to hospitals occurring on or after January 1, 1987.
- (h) if CHAMPUS benefits are to be paid in a participating status, I agree to submit this claim to the appropriate CHAMPUS claims processor as a participating provider. I agree to accept the CHAMPUS-determined reasonable charge as the total charge for the medical services or supplies listed on the claim form. I will accept the CHAMPUS-determined reasonable charge even if it is less than the billed amount, and also agree to accept the amount paid by CHAMPUS, combined with the cost-share amount and deductible amount, if any, paid by or on behalf of the patient as full payment for the listed medical services or supplies. I will make no attempt to collect from the patient (or his or her parent or guardian) amounts over the CHAMPUS-determined reasonable charge. CHAMPUS will make any benefits payable directly to me, if I submit this claim as a participating provider.

ESTIMATED CONTRACT BENEFITS



This public document was published at a total cost of \$1800.28. Three hundred copies of this document were printed for the Louisiana Department of Health and Hospitals by Louisiana State University Medical Center, Auxiliary Enterprises, Duplicating, Printing, and Graphics, 1542 Tulane Avenue, New Orleans, LA. This document was printed in accordance with standards for printing by State Agencies established pursuant to R.S.43:31.