



Louisiana

LAHIDD **Report** **2004**

Department of
Health and Hospitals

Office of
Public Health

State Center
for Health Statistics

State Health Care
Data Clearinghouse

**Hospital
Inpatient
Discharge
Data**

Louisiana Hospital Inpatient Discharge Database (LAHIDD)

Annual Report 2004

**As mandated by Louisiana Revised Statutes
40:1300.111 through 40:1300.113**

**Kathleen Babineaux Blanco
Governor**

**Frederick P. Cerise, MD, MPH
Secretary, Department of Health and Hospitals**



2004 LAHIDD Report
Louisiana Department of Health and Hospitals
Office of Public Health

Roxane Townsend, MD
Deputy Secretary
Department of Health and Hospitals

Sharon Howard, MSW
Assistant Secretary
Office of Public Health

Darlene W. Smith, BA
Director, State Center for Health Statistics
State Registrar of Vital Records

Robert Starszak, MS, MPH
Manager, State Center for Health Statistics

Editors

State Center for Health Statistics

Rafael A. Jarpa, MSc
Public Health Epidemiologist Supervisor

Sukhjeet S. Ahuja, MD, MPH
Public Health Epidemiologist

With the assistance of:

Carolina Monjarres, BS

Cover Design

Auxiliary Enterprises, Graphic Solutions
Louisiana State University, Health Sciences Center

*This report is the result of contributions from data received from Louisiana Hospitals.
The Louisiana State Center for Health Statistics would like to acknowledge their efforts
and extend thanks to all who assisted in the publication of this document.*

A Publication of the
Department of Health and Hospitals
Office of Public Health
State Center for Health Statistics
1450 L & A Road
Metairie, LA 70001
(504) 219-4515
Website: www.dhh.louisiana.gov



Kathleen Babineaux Blanco
GOVERNOR

STATE OF LOUISIANA
DEPARTMENT OF HEALTH AND HOSPITALS



Frederick P. Cerise, M.D., M.P.
SECRETARY

April 9, 2007

Dear Citizens of Louisiana:

The Louisiana Department of Health and Hospitals, Office of Public Health is pleased to present the 2004 Louisiana Annual Hospital Inpatient Discharge Database Report - LAHIDD. LAHIDD is Louisiana's only comprehensive population-based storehouse for hospital-inpatient data.

In this report, you will discover a unique source of data which describes hospital discharge trends and identifies at-risk populations within the State of Louisiana. It contains information on patient demographics, diagnoses, procedures, hospitals charges and costs. Data are presented at parish and state level, along with comparable U.S. morbidity statistics.

We expect that this report will prompt discussion on measures and policies that will improve the health status of Louisiana's residents. The LAHIDD report is also available for review on the Office of Public Health's web site at www.oph.dhh.louisiana.gov. We gladly welcome your comments regarding this publication.

Sincerely,

**Sharon G. Howard
Assistant Secretary**

SGH:rj

Table of Contents 2004

Message from the Assistant Secretary

Table of Contents	i-ii
LAHIDD Background	iii-iv
State Summary 2004.....	1-3
Chart 1-2. Hospital Discharges by Age Group & Gender.....	4
Chart 3-4. Hospital Discharges by Race, Counts by Year.....	5
Table 1. Top 10 Principal Diagnoses at Discharge.....	6
Table 2a-2b. Top 10 Principal Diagnoses by Body System	7
Table 3a-3g. Top 5 Principal Diagnoses by Age Group.....	8-9
Chart 5-6. Hospital Discharges by Co-morbidities, Admit Source.....	10
Table 4. Top 10 Co-morbidities.....	11
Table 5. Top 10 Co-morbidities by Age Group.....	12
Table 6. Top 10 Principal Diagnoses Admitted through Emergency Room.....	13
Table 7. Top 10 Principal Diagnoses Admitted Through Emergency Room by Age Group.....	14
Table 8. Top 10 Principal Procedures.....	15
Table 9. Top 10 Highest Average Charged Principal Diagnoses	16
Table 10. Top 10 Least Average Charged Principal Diagnoses.....	17
Table 11. Top 10 Principal Diagnoses with The Longest Hospital Stay	18
Chart 7-8. Hospital Discharges by Primary Payers, Non-Routine Discharges.....	19
Table 12. Top 10 Principal Diagnoses Charged to Medicare.....	20
Table 13. Top 10 Principal Diagnoses Charged to Private Insurers.....	21
Table 14. Top 10 Principal Diagnoses Charged to Medicaid.....	22
Table 15. Top 10 Principal Diagnoses of Patients who Leave Against Medical Advice.....	23
Table 16. Top 10 Principal Diagnoses of Patients Discharged to LTC & other Facilities.....	24
Table 17. Top 10 Principal Diagnoses of Discharges resulting in In-hospital Death	25
Table 18. Top 3 In-Hospital Death counts by Principal Diagnoses and Age Group	26
State vs. U.S. Summary 2004.....	29
Table 19a. Top 10 Principal Diagnoses Discharges, Louisiana vs. U.S. 2003.....	30
Table 19b. Top 10 Principal Diagnoses Discharges, Louisiana vs. U.S. 2004.....	31
Table 20a. Top 10 Principal Procedures Discharges, Louisiana vs. U.S. 2003.....	32
Table 20b. Top 10 Principal Procedures Discharges, Louisiana vs. U.S. 2004.....	33
Table 21a. Top 10 Charges for Principal Diagnoses, Louisiana vs. U.S. 2003.....	34
Table 21b. Top 10 Charges for Principal Diagnoses, Louisiana vs. U.S. 2004	35
Table 22a. Top 3 Principal Diagnoses with Corresponding Top 5 Principal Procedures, Louisiana vs. U.S. 2003.....	36
Table 22b. Top 3 Principal Diagnoses with Corresponding Top 5 Principal Procedures, Louisiana vs. U.S. 2004.....	37

Parish Summary 2004.....	41
Table 23. Hospital Inpatient Discharges by Parish.....	42
Table 24. Percent of Total Parish Discharges for Louisiana’s Top 5 Principal Diagnoses	43
Table 25 Percent of Total Parish Discharges for Louisiana’s Top 5 Principal Diagnoses resulting in In-Hospital Death	44
Table 26 Percentage and Average Charges for Source of Charges by Parish.....	45-46
Table 27. Percent of Louisiana’s Top 5 Principal Diagnoses by Parish.....	47
Table 28. Percent of Louisiana’s Top 5 Principal Diagnoses resulting in In-hospital Death by Parish.....	48
Table 29. Percent of Discharge Status by Year.....	49
Table 30. Number of Discharges by Principal Diagnoses and Health Region.....	50-52
Technical Notes.....	55
Glossary.....	59
UB-92 form sample.....	63

BACKGROUND

Act 622 of the 1997 Regular Session of the Louisiana Legislature enacted R.S. 40:1300.111 through 40:1300.113 and designated the STATE HEALTH CARE DATA CLEARINGHOUSE as the agency responsible for the collection of data related to the healthcare industry. This law charges the CLEARINGHOUSE with the responsibility for creating population-based healthcare data registries. These registries are expected to offer Louisiana and its healthcare providers their first opportunity to plan and operate systematic intervention strategies that address the antecedents of death.

In prioritizing the mandates of the CLEARINGHOUSE, the DEPARTMENT OF HEALTH AND HOSPITALS, OFFICE OF PUBLIC HEALTH (DHH/OPH) considered the various health-information data streams already in existence and the data-collection experiences of 36 other states. It was determined that Louisiana would benefit the most by focusing its initial data-collection efforts on hospital inpatient discharge data. As a result, the Louisiana Hospital Inpatient Discharge Database (LAHIDD) was designated as the registry containing inpatient discharge data submitted to DHH/OPH by hospitals within Louisiana.

History of LAHIDD

The rulemaking process enabling the development of LAHIDD, which involved the participation of public and private stakeholders, was completed in the fall of 1998. The following three milestones depict the legislative and regulatory history of the project:

- ❖ House Bill 1462 passed in May 1997; signed by the Governor in July as Act 622.
- ❖ Rules committee formed in DHH/OPH in November 1997
- ❖ Rules governing LAHIDD published in July 1998

An extensive survey of all hospitals in the state regarding their database systems and their discharge data submission capacities was conducted from late 1997 to early 1998. As a result of this survey, a comprehensive submittal guide was created and mailed out to hospitals in October 1998. In December 1998, hospitals began submitting data on discharges occurring between January and June 1998. To date, the State Center for Health Statistics has received fifteen quarterly data submissions from hospitals. These were submitted semi-annually during 1998, and quarterly thereafter, from January 1999 through March 2003.

Purpose of LAHIDD

LAHIDD underlies the commitment of DHH/OPH to the practice of sound public health by expanding the state's ability to carry out its three Core Public Health Functions:

- Assessment of community health status and resources;
- Assurance of availability and provision of necessary, high-quality, effective services; and
- Development of health policy that accurately addresses community needs.

The LAHIDD data will help DHH/OPH to accomplish its functions by:

- ❖ Enhancing Disease Surveillance and Reporting

LAHIDD provides a unique resource for the investigation of the progression of morbidity in the population and helps to identify at-risk populations within the community. LAHIDD data can be enriched through linkage to other DHH/OPH databases and can be further enhanced by information gathered by the state's other surveillance programs (e.g., Injury Research and Prevention, Behavioral Risk Factor Surveillance). Linking LAHIDD data to these other

population-based databases will enable the development of effective prevention policies targeted to at-risk populations. For DHH/OPH programs such as Tuberculosis and HIV, these data can be used to track patient treatment and to evaluate the completeness of programmatic surveillance.

❖ Assessing Healthcare Utilization

Many areas in Louisiana are experiencing rising healthcare costs and shortages of health professionals. These costs and shortages make it essential that patients, healthcare professionals, hospitals, and third-party payers have the necessary information to:

- evaluate health care needs; and
- identify the appropriate and efficient utilization of health services.

Ultimately, evaluation of needs and identification of appropriate and efficient utilization of health services requires an understanding of:

- the patterns and trends in the availability, utilization, and costs of health care services
- the underlying patterns of disease that necessitate these services.

Through LAHIDD, the STATE HEALTH CARE DATA CLEARINGHOUSE provides information needed to make these determinations. It is different from other sources of data in that LAHIDD is Louisiana's only comprehensive, population-based repository for hospital inpatient data while the DHH/OPH has been the state's repository for mortality data. LAHIDD contains information needed to measure and evaluate morbidity and hospital charges associated with inpatient stays in the state. It also contains information on the diagnoses of those treated, the procedures performed, and the hospital charges for those procedures.

The detailed information available in LAHIDD enables the state to identify specific geographic areas and populations in need of improved access to healthcare and health education. While maintaining LAHIDD confidentiality restrictions, identification of healthcare needs can be accomplished by tracking:

- utilization of hospital care for specific diagnoses and procedures in targeted populations and geographic areas; and
- hospital charges for services provided to targeted populations and in geographic areas.

Hospital Inpatient Discharge Data



State Summary 2004

State Summary 2004

This section summarizes information collected from patients hospitalized and discharged from 161 Louisiana licensed hospitals for 2004. Data were consolidated and presented by patient and disease characteristics. Health care facilities include acute care, long-term care, psychiatric, rehabilitation, and specialty hospitals.

Patients between 65 and 84 years of age accounted for most hospital stays in Louisiana for the year 2004 (Chart 1, pg. 4). Those aged 18-44 years old followed closely at slightly lower percentages for the same period.

Hospital discharge data for 2004 show that women accounted for more discharges than men (Chart 2, pg. 4). In that year, 57.9% of total discharges were among white/Caucasian patients as compared to 53.7% in the year 2003. Similarly, the percentage for black/African-Americans went up to 30.3% in 2004 from 28.9% in 2003. **(Chart 3, pg. 5).** The total number of discharges for each month varies throughout each year; for 2004 the average monthly count of discharges was 52,225 **(Chart 4, pg. 5).**

The principal diagnoses in 2003-2004 are shown on Table 1, 2a-2b, and 3a-3g. The most common diagnosis for hospitalization during the 2003-2004 periods was “live birth” of an infant. In the year 2003, “pneumonia*” ranked second as a principal diagnosis of hospital discharges. In the year 2004, “congestive heart failure, non-hypertensive” was second, closely followed by “coronary atherosclerosis and other heart diseases” **(Table 1, pg. 6).**

The leading diagnosis by body-system classification resulting in hospitalization was “diseases of the circulatory system”, which accounted for 19.0% of all discharges for the year 2004 as compared to 20.2% in 2003. “Complications of pregnancy, childbirth and the puerperium” ranked second with 11.1% up from 9.5% in 2003 and “diseases of the respiratory system” ranked third with 9.5%, down from 10.6% in 2003 **(Table 2a-2b, pg. 7).**

For the year 2004, the principal diagnoses for discharges by age group are presented on Tables 3a-3g, pgs. 8-9.

Co-morbidities are coexisting medical problems that are not the main reason for a hospital stay. Discharges with co-morbidities are illustrated on Chart 5 and Tables 4-5, pgs. 10-12. More than 91% of all patients hospitalized during 2003-2004 had, at least, one co-morbidity. Patients with four or more co-morbidities accounted for an average 56% of hospital stays in the same 2-year period. During the year 2004, “essential hypertension” was the most common co-morbidity at about 6.5%, followed by “coronary atherosclerosis and other heart disease” at 5.2% and “fluid and electrolyte disorders” at 3.8%. **Co-morbidities by age group are listed on Table 5, pg. 12.**

Principal diagnoses admitted through the Emergency Room (ER) during the period of 2003-2004 in Louisiana are shown on *Chart 6, pg. 10 and Tables 6 and 7, pgs. 13-14*. In the year 2004, 55.6% of all admissions were for birth or routine procedure; 38.2% were through the emergency room (ER). At least five of the top 10 diagnoses for patients admitted to the hospital through the ER were related to heart problems, and one of the top 10 diagnoses was related to respiratory problems. About 5.3% of all admissions to the hospital through the ER were due to “pneumonia**”.

***Table 7 pg. 14* reports the top 10 principal diagnoses admitted through the emergency room by age group in the year 2004.**

***Table 8, pg. 15* shows the top 10 principal procedures in Louisiana for the years 2003-2004.** Three of the top 10 principal procedures were related to pregnancy and childbirth and two of the top 10 procedures during this period were related to heart conditions. Lower cervical cesarean section ranked first in principal procedures (4.7% in 2003, 5.7% in 2004).

Principal diagnoses with the highest charges per stay and the longest average lengths of stay are illustrated on *Table 9, pg. 16 and Table 11, pg. 18*. In 2004, diagnoses related to “immunity disorders”, “spinal cord injury”, and “leukemias” were the top three most expensive diagnoses treated in Louisiana hospitals on a charges-per-stay basis (***Table 9, pg. 16***). Hospitals charged an average of \$171,024 per stay for “immunity disorders” and \$79,473 for “spinal cord injury” in 2004.

The least expensive diagnoses on a per-discharge basis and those with the shortest average hospital stays are depicted in *Table 10, pg. 17*. Among diagnoses with the lowest average charges during 2003-2004 there were, at least, three related to pregnancy and perinatal conditions.

The Medicare and Medicaid programs combined were billed for more than half of all hospital stays in Louisiana, at 62.9% in 2003 and 60.7% in 2004 (*Chart 7, pg. 19*). Medicare was billed for more than one-third of all hospital stays in the two-year period. The three most prominent diagnoses for which Medicare was charged during this period were “congestive heart failure, non-hypertensive”, “coronary atherosclerosis and other heart diseases” and “pneumonia**” (***Table 12, pg. 20***). Private insurers were also billed for approximately one-third of all hospital stays in 2003-2004. Three of the top ten diagnoses charged to private insurers were related to heart problems (***Table 13, pg. 21***). Medicaid was billed for a little more than one-fifth of all hospital stays and mostly for diagnoses related to infancy and childbirth, which accounted for five of the top 10 principal diagnoses (***Table 14, pg. 22***).

Discharge status of patients is shown on *Chart 8 and Tables 15-18*. In 2004, 73.9% of the discharges resulted in the patients returning home following completion of treatment in the hospitals. About 2.1% of hospital stays

culminated in death, 1.8% were referred to a different short-term general hospital facility, 7.9% resulted in the patient being sent to a long-term care facility (**Chart 8, pg. 19**) and 0.7% involved patients who were released against medical advice. The principal diagnosis for this last group was most frequently “substance-related mental disorders” at 13.5% (**Table 15, pg. 23**).

The top 3 principal diagnoses causing discharged patients to be referred to long-term care and other facilities were “pneumonia*”, “urinary tract infection”, and “congestive heart failure, non-hypertensive”. The most common diagnoses that compromised functional ability were “acute cerebrovascular disease”, “fracture of neck of femur (hip)” and “rehabilitation care, fitting of prostheses, and adjustment of devices” (**Table 16, pg. 24**).

“Septicemia (except in labor)”, “acute cerebrovascular disease” and “congestive heart failure, non-hypertensive” were the most common primary diagnoses for stays that resulted in in-hospital deaths. Other diagnoses resulting in in-hospital deaths were linked to cardiac diseases, respiratory diseases, and cancer (**Table 17, pg. 25**).

In-hospital death counts by principal diagnoses and age indicate that, for patients aged 45 years and older, the most common diagnoses were complications from “septicemia (except in labor)” and “congestive heart failure, non-hypertensive”. Other than a relatively large count of death during birth, the primary conditions for hospital stays resulting in in-hospital deaths for those under aged 44 were “intracranial injury” followed by “HIV” and “acute cerebrovascular diseases” (**Table 18, pg. 26**).

* *Pneumonia except that caused by tuberculosis or sexually transmitted diseases.*

Chart 1. Hospital Discharges by Age Group (in years)
Louisiana, 2003-2004

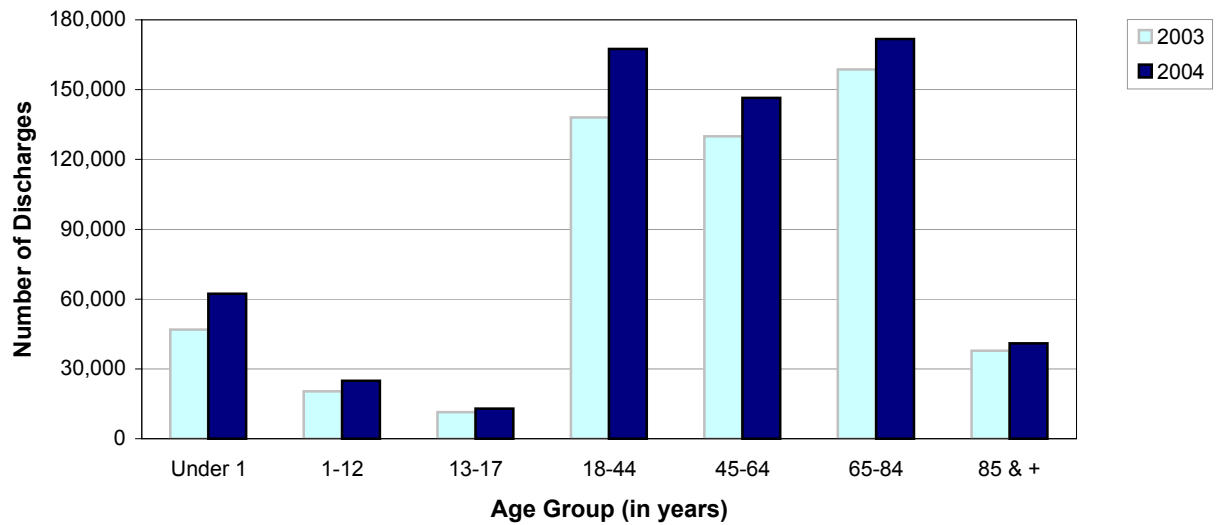
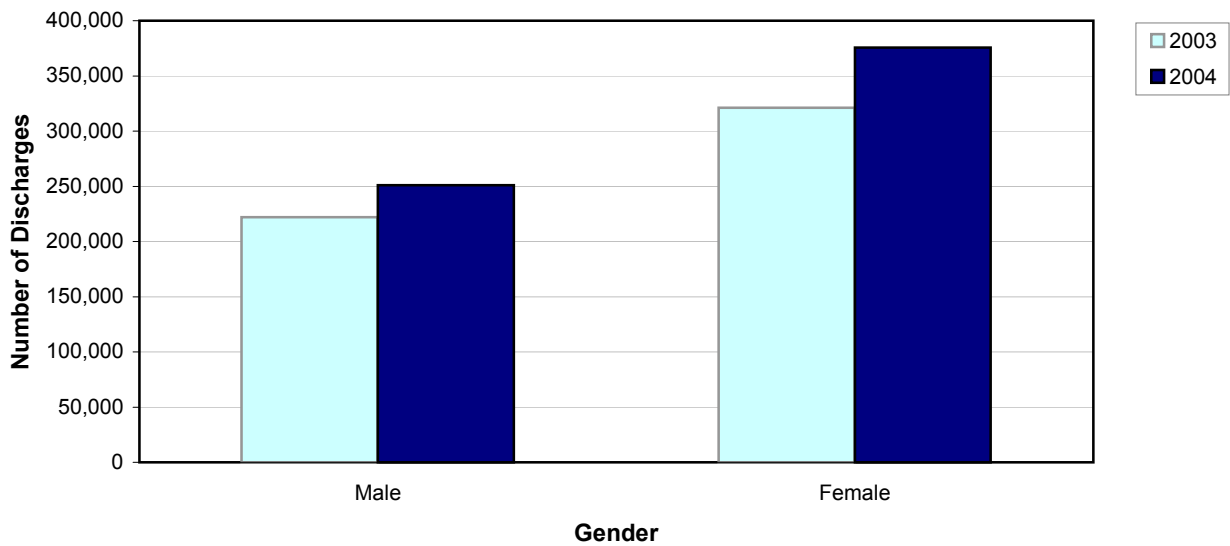
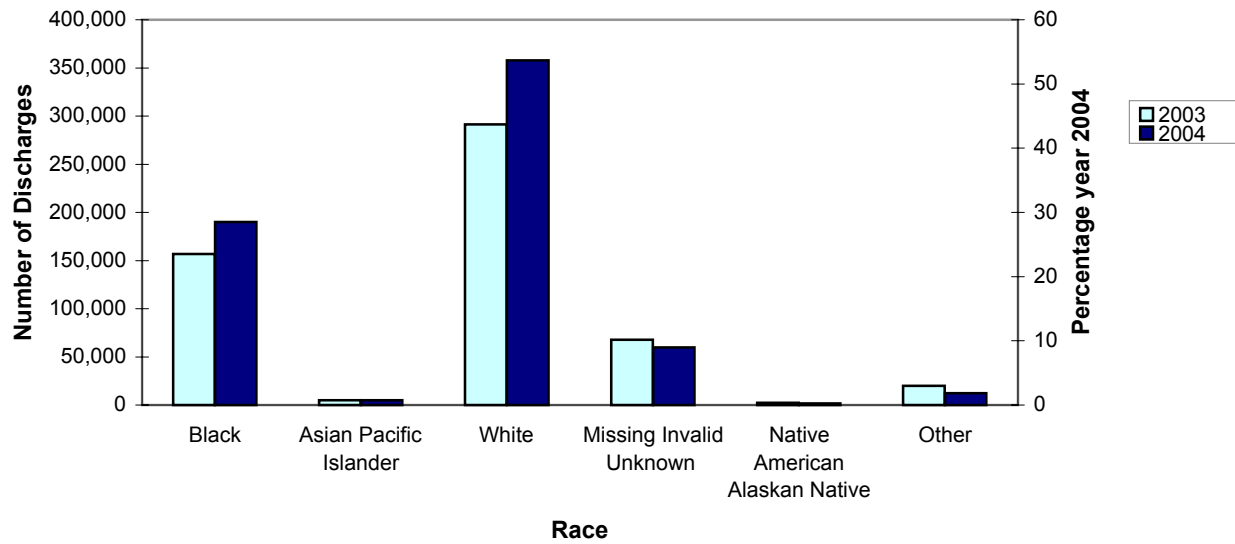


Chart 2. Hospital Discharges by Gender
Louisiana, 2003-2004



**Chart 3. Number and Percentage of Discharges by Race
Louisiana, 2003-2004**



**Chart 4. Number of Discharges by Month
Louisiana, 2003-2004**

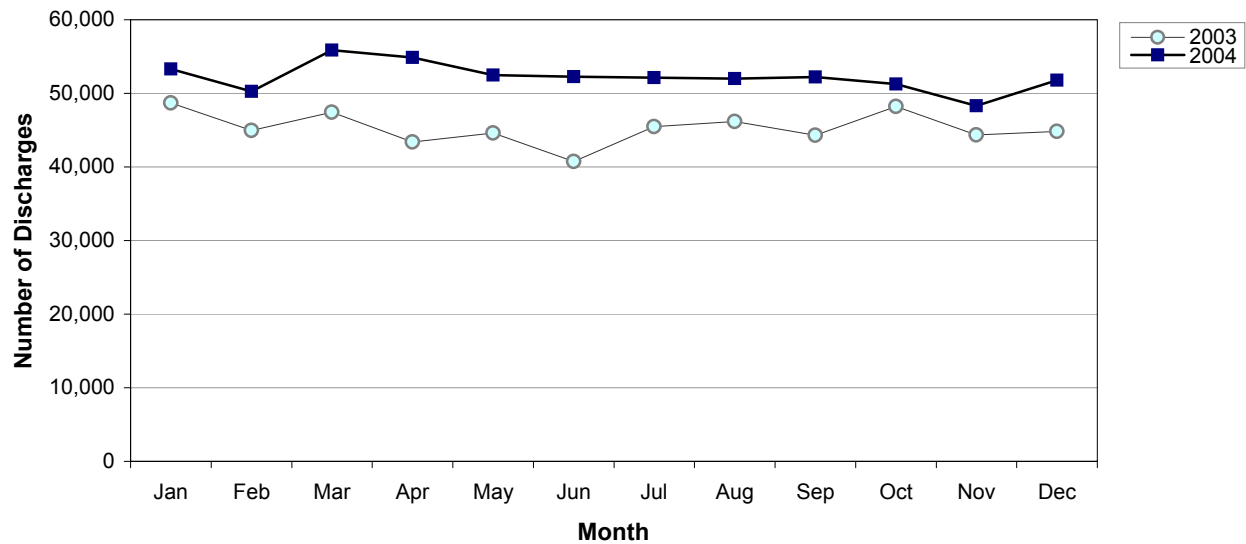


Table 1. Top 10 Principal Diagnoses at Discharge, Louisiana 2003-2004

Rank	Principal Diagnoses 2003	# of Discharges	% of all Disch.	Rate *	Principal Diagnoses 2004	# of Discharges	% of all Disch.	Rate *
1	Liveborn	36,594	6.7	81.5	Liveborn	48,797	7.8	108.3
2	Pneumonia (except that caused by tuberculosis or STDs)	22,461	4.1	50.0	Congestive heart failure, non-hypertensive	23,292	3.7	51.7
3	Congestive heart failure, non-hypertensive	21,627	4.0	48.2	Coronary atherosclerosis and other heart disease	22,673	3.6	50.3
4	Coronary atherosclerosis and other heart disease	20,164	3.7	44.9	Pneumonia (except that caused by tuberculosis or STDs)	21,619	3.4	48.0
5	Rehabilitation care, fitting of prostheses, and adjustment of devices	12,038	2.2	26.8	Nonspecific chest pain	13,886	2.2	30.8
6	Nonspecific chest pain	11,821	2.2	26.3	Rehabilitation care, fitting of prostheses, and adjustment of devices	13,685	2.2	30.4
7	Fluid and electrolyte disorders	11,761	2.2	26.2	Fluid and electrolyte disorders	13,123	2.1	29.1
8	Affective disorders	11,425	2.1	25.4	Skin and subcutaneous tissue infections	12,876	2.1	28.6
9	Skin and subcutaneous tissue infections	10,689	2.0	23.8	Affective disorders	12,577	2.0	27.9
10	Chronic obstructive pulmonary disease and bronchiectasis	10,020	1.8	22.3	Urinary tract infections	11,469	1.8	25.4
Total of Top 10 Discharges		168,600	31.0	375.5	Total of Top 10 Discharges	193,997	31.0	430.5
Total # of Discharges		543,219	100.0	1209.7	Total # of Discharges	626,700	100.0	1390.6

*Note: Shadowed areas indicate rank unchanged for this two-year period, * Rate per 10,000 Louisiana Population, U.S. Census Bureau Estimate July 1, 2003 (4,490,380) and July 1, 2004 (4,506,685)*

Table 2a. Top 10 Principal Diagnoses, Louisiana 2003

Rank	2003 Principal Diagnoses	# of Discharges	% of Discharges	Rate *
1	Diseases of the circulatory system	109,731	20.2	244.4
2	Diseases of the respiratory system	57,783	10.6	128.7
3	Complications of pregnancy, childbirth, and the puerperium	51,557	9.5	114.8
4	Diseases of the digestive system	47,216	8.7	105.1
5	Injury and poisoning	38,286	7.0	85.3
6	Certain conditions originating in the perinatal period	37,524	6.9	83.6
7	Mental disorders	34,475	6.3	76.8
8	Diseases of the genitourinary system	27,614	5.1	61.5
9	Endocrine, nutritional, and metabolic diseases and immunity	24,308	4.5	54.1
10	Symptoms, signs, and ill-defined conditions and factors	23,638	4.4	52.6
	Total of Top 10 Discharges	452,132	83.2	1006.9
	Total number of Discharges	543,219	100.0	1209.7

Table 2b. Top 10 Principal Diagnoses, Louisiana 2004

Rank	2004 Principal Diagnoses	# of Discharges	% of Discharges	Rate *
1	Diseases of the circulatory system	119,207	19.0	264.5
2	Complications of pregnancy, childbirth, and the puerperium	69,383	11.1	154.0
3	Diseases of the respiratory system	59,678	9.5	132.4
4	Diseases of the digestive system	54,318	8.7	120.5
5	Certain conditions originating in the perinatal period	50,219	8.0	111.4
6	Injury and poisoning	42,474	6.8	94.2
7	Mental disorders	39,409	6.3	87.4
8	Diseases of the genitourinary system	32,799	5.2	72.8
9	Endocrine, nutritional, and metabolic diseases and immunity	27,294	4.4	60.6
10	Neoplasms	26,751	4.3	59.4
	Total of Top 10 Discharges	521,532	83.2	1157.2
	Total number of Discharges	626,700	100.0	1390.6

*Note: Shadowed areas indicate rank is unchanged for this two-year period. Grouping used in these tables is done by using the first two-digits of the multiple level CCS codes, called body system. * Rate per 10,000 Louisiana population, U.S. Census Bureau Estimate July 1, 2003 (4,490,380) and July 1, 2004 (4,506,685).*

Table 3a. Top 5 Principal Diagnoses, Under 1 Year of Age, Louisiana 2004

Principal Diagnoses	Discharges: Age Group < 1
Liveborn	48,795
Acute bronchitis	3,416
Pneumonia (except that caused by TB or STDs)	1,118
Fluid and electrolyte disorders	930
Other perinatal conditions	664
Total of Top 5 Discharges	54,923
Total # of Discharges	62,243

Table 3b. Top 5 Principal Diagnoses, Ages 1-12, Louisiana 2004

Principal Diagnoses	Discharges: Age Group 1-12
Asthma	3,135
Pneumonia (except that caused by TB or STDs)	2,696
Fluid and electrolyte disorders	2,649
Skin and subcutaneous tissue infections	1,540
Intestinal infection	995
Total of Top 5 Discharges	11,015
Total # of Discharges	24,830

Table 3c. Top 5 Principal Diagnoses, Ages 13-17, Louisiana 2004

Principal Diagnoses	Discharges: Age Group 13-17
Affective disorders	1,125
Other mental conditions	642
Other complications of birth, puerperium affecting management of mother	624
Other complications of pregnancy	566
Skin and subcutaneous tissue infections	532
Total of Top 5 Discharges	3,489
Total # of Discharges	12,894

Table 3d. Top 5 Principal Diagnoses, Ages 18-44, Louisiana 2004

Principal Diagnoses	Discharges: Age Group 18-44
Other complications of birth, puerperium affecting management of mother	10,317
Other complications of pregnancy	9,674
Previous C-section	7,747
Trauma to perineum and vulva	6,667
Affective disorders	6,040
Total of Top 5 Discharges	40,445
Total # of Discharges	167,525

Table 3e. Top 5 Principal Diagnoses, Ages 45-64, Louisiana 2004

Principal Diagnoses	Discharges: Age Group 45-64
Coronary atherosclerosis and other heart disease	10,244
Nonspecific chest pain	6,907
Congestive heart failure, non-hypertensive	6,018
Pneumonia (except that caused by TB or STDs)	4,456
Spondylosis, intervertebral disc disorders, other back problems	4,048
Total of Top 5 Discharges	31,673
Total # of Discharges	146,436

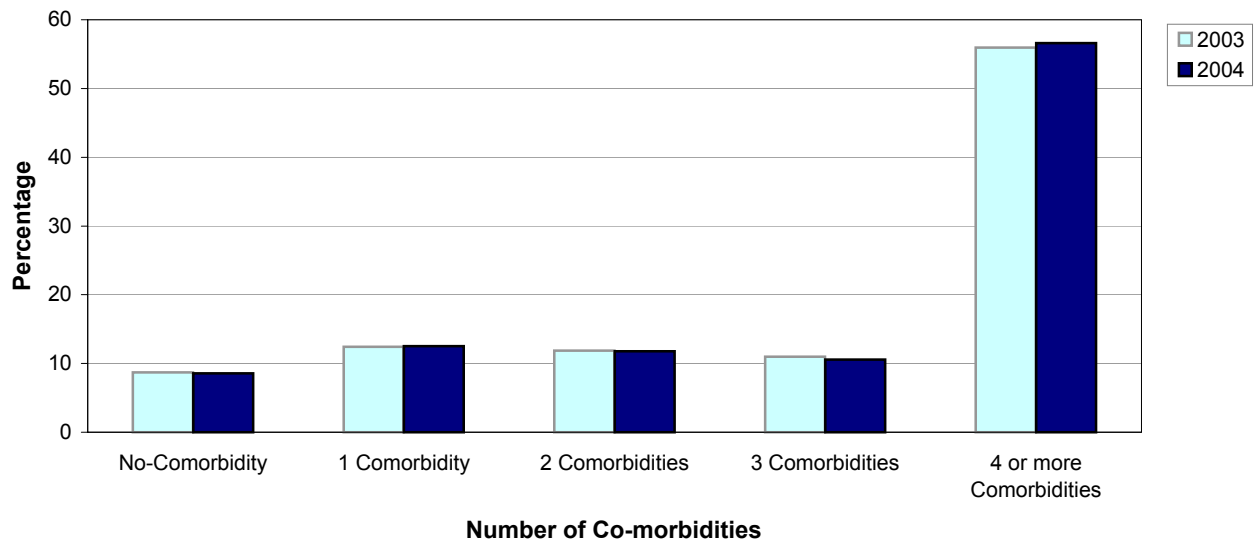
Table 3f. Top 5 Principal Diagnoses, Ages 65-84, Louisiana 2004

Principal Diagnoses	Discharges: Age Group 65-84
Congestive heart failure, non-hypertensive	12,367
Coronary atherosclerosis and other heart disease	10,259
Pneumonia (except that caused by TB or STDs)	8,137
Rehabilitation care, fitting of prostheses, and adjustment of devices	8,104
Cardiac dysrhythmias	5,939
Total of Top 5 Discharges	44,806
Total # of Discharges	171,787

Table 3g. Top 5 Principal Diagnoses, Ages 85 and up, Louisiana 2004

Principal Diagnoses	Discharges: Age Group 85 +
Congestive heart failure, non-hypertensive	3,762
Pneumonia (except that caused by TB or STDs)	3,079
Urinary tract infections	2,190
Rehabilitation care, fitting of prostheses, and adjustment of devices	2,003
Fluid and electrolyte disorders	1,676
Total of Top 5 Discharges	12,710
Total # of Discharges	40,975

**Chart 5. Percentage of Hospital Discharges by Co-morbidities
Louisiana, 2003-2004**



**Chart 6. Number of Hospital Discharges by Admit Source
Louisiana, 2003-2004**

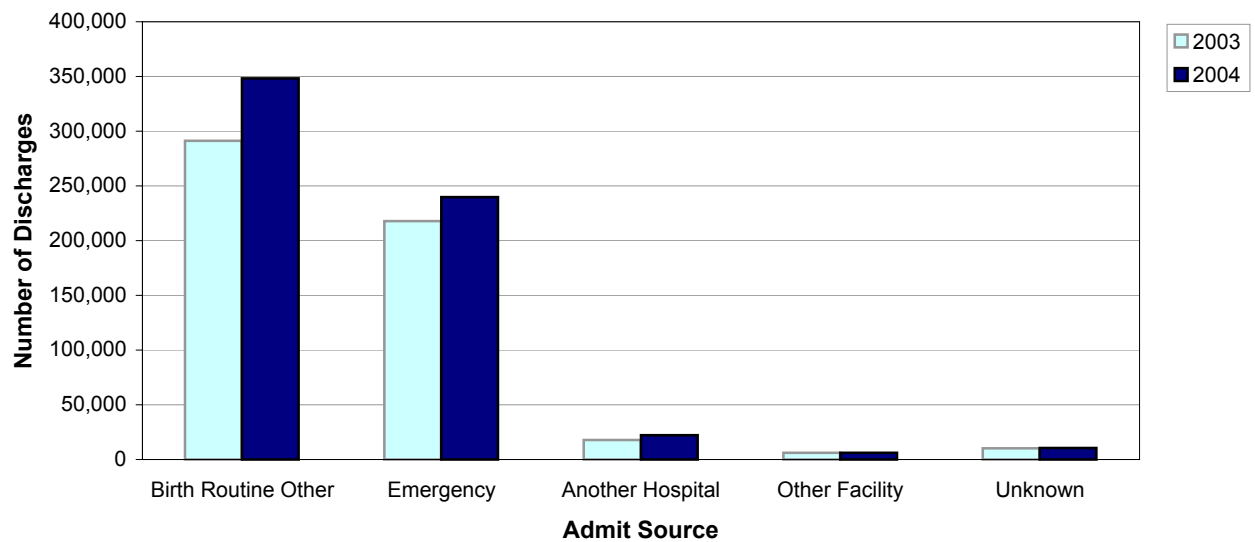


Table 4. Top 10 Co-morbidities Louisiana, 2003-2004

Rank	Co-Morbidities 2003	# of Co-Morbidities	%	Rate *	Co-Morbidities 2004	# of Co-Morbidities	%	Rate *
1	Essential hypertension	156,307	6.7	348.1	Essential hypertension	177,327	6.5	393.5
2	Coronary atherosclerosis and other heart disease	135,427	5.8	301.6	Coronary atherosclerosis and other heart disease	142,783	5.2	316.8
3	Fluid and electrolyte disorders	89,506	3.8	199.3	Fluid and electrolyte disorders	102,992	3.8	228.5
4	Diabetes mellitus without complication	73,556	3.2	163.8	Diabetes mellitus without complication	80,077	2.9	177.7
5	Cardiac dysrhythmias	59,241	2.5	131.9	Substance-related mental disorders	73,878	2.7	163.9
6	Substance-related mental disorders	58,672	2.5	130.7	Cardiac dysrhythmias	66,723	2.4	148.1
7	Deficiency and other anemia	58,052	2.5	129.3	Deficiency and other anemia	66,420	2.4	147.4
8	Congestive heart failure, non-hypertensive	55,102	2.4	122.7	Congestive heart failure, non-hypertensive	61,632	2.3	136.8
9	Chronic obstructive pulmonary disease and bronchiectasis	50,720	2.2	113.0	Disorders of lipid metabolism	60,911	2.2	135.2
10	Disorders of lipid metabolism	48,242	2.1	107.4	Normal pregnancy and/or delivery	55,681	2.0	123.6
	Total of Top 10 Co-Morbidities	784,825	33.7	1747.8	Total of Top 10 Co-Morbidities	888,424	32.6	1971.3
	Total # of Co-Morbidities	2,327,552	100.0	5183.4	Total # of Co-Morbidities	2,724,108	100.0	6044.6

Co-Morbidities are coexisting medical problems that are listed as other diagnoses and are not directly related to the principal diagnoses.

Shadowed areas indicate rank unchanged for this 2-year period.

** Rates per 10,000 Louisiana Population, U.S. Census Bureau Estimate July 1, 2003 (4,490,380) and July 1, 2004 (4,506,685).*

Table 5. Top 10 Co-Morbidities by Age Group Louisiana, 2004

Co-Morbidities	Age in Years						
	< 1 yr	1-12	13-17	18-44	45-64	65-84	85 &+
Other perinatal conditions	26,793						
Hemolytic jaundice and perinatal jaundice	12,063						
Short gestation, low birth weight, & fetal growth retardation	12,046						
Immunizations and screening for infectious disease	10,480			9,229			
Medical examination/evaluation	5,833						
Other congenital anomalies	3,162						
Cardiac and circulatory congenital anomalies	2,489						
Other male genital disorders	2,209						
Fluid and electrolyte disorders	2,174	4,402	925	13,722	25,078	42,042	14,646
Otitis media and related conditions	1,625	2,000					
Asthma		2,340					
Bacterial infection, unspecified site		2,307	1,050	9,339			
Other upper respiratory infections		2,096					
Noninfectious gastroenteritis		1,735					
Other gastrointestinal disorders		1,272					
Pneumonia (except that caused by TB or STDs)		1,244					
Residual codes, unclassified		1,148	719	15,258	21,229		
Fever of unknown origin		945					
Normal pregnancy and/or delivery			2,649	52,981			
Other complications of birth, puerperium affecting mgmt			1,498	22,903			
Other mental conditions			1,289				
Other complications of pregnancy			1,162	22,363			
Substance-related mental disorders			1,039	29,317	27,793		
Anxiety, somatoform, dissociative, & personality disorders			908				
Preadult disorders			766				
Essential hypertension				16,835	59,580	82,398	18,238
Deficiency and other anemia				13,077	16,332	26,981	8,364
Coronary atherosclerosis and other heart disease					44,472	79,705	13,880
Diabetes mellitus without complication					28,116	38,918	6,203
Disorders of lipid metabolism					23,656	29,756	
Other nutritional, endocrine, and metabolic disorders					15,491		
Chronic obstructive pulmonary disease and bronchiectasis					14,861	31,629	6,430
Cardiac dysrhythmias						38,314	11,870
Congestive heart failure, non-hypertensive						33,726	11,522
Urinary tract infections						22,312	8,565
Senility and organic mental disorders							12,885
Total of Top 10 Co-morbidities	78,874	19,489	12,005	205,024	276,608	425,781	112,603
Total number of Co-morbidities	106,356	44,910	30,326	528,610	712,196	1,039,388	262,274

Note: The shadowed boxes show the highest frequency by age group

**Table 6. Top 10 Principal Diagnoses Admitted through Emergency Room (ER)
Louisiana, 2003-2004**

Rank	Principal Diagnoses 2003	# of Discharges	% of all Disch.	Rate *	Principal Diagnoses 2004	# of Discharges	% of all Disch.	Rate *
1	Congestive heart failure, non-hypertensive	13,819	6.3	30.8	Congestive heart failure, non-hypertensive	14,854	6.2	33.0
2	Pneumonia (except that caused by TB or STDs)	12,973	6.0	28.9	Pneumonia (except that caused by TB or STDs)	12,589	5.3	27.9
3	Nonspecific chest pain	8,280	3.8	18.4	Nonspecific chest pain	9,901	4.1	22.0
4	Coronary atherosclerosis and other heart disease	7,761	3.6	17.3	Coronary atherosclerosis and other heart disease	8,642	3.6	19.2
5	Acute cerebrovascular disease	6,108	2.8	13.6	Fluid and electrolyte disorders	6,797	2.8	15.1
6	Fluid and electrolyte disorders	6,000	2.8	13.4	Urinary tract infections	6,711	2.8	14.9
7	Acute myocardial infarction	5,890	2.7	13.1	Acute cerebrovascular disease	6,562	2.7	14.6
8	Urinary tract infections	5,885	2.7	13.1	Skin and subcutaneous tissue infections	6,330	2.6	14.0
9	Chronic obstructive pulmonary disease and bronchiectasis	5,850	2.7	13.0	Acute myocardial infarction	6,038	2.5	13.4
10	Skin and subcutaneous tissue infections	5,277	2.4	11.8	Cardiac dysrhythmias	5,458	2.3	12.1
	Total of Top 10 Discharges through Emergency Room	77,843	35.8	173.4	Total of Top 10 Discharges through Emergency Room	83,882	35.0	186.1
	Total # of Emergency Room Admissions	217,719	100.0	484.9	Total # of Emergency Room Admissions	239,648	100.0	531.8

*Note: Shadowed areas indicate rank unchanged for this two-year period, * Rate per 10,000 Louisiana Population, U.S. Census Bureau Estimate July 1, 2003 (4,490,380) and July 1, 2004 (4,506,685).*

Table 7. Top 10 Principal Diagnoses Admitted Through Emergency Room (ER) by Age Group. Louisiana 2004

Principal Diagnosis	Age Group in Years						
	< 1 yr	1-12	13-17	18-44	45-64	65-84	85 &+
Acute bronchitis	1,193	378					
Pneumonia (except that caused by TB or STDs)	401	1,117		1,322	2,744	5,008	1,919
Fluid and electrolyte disorders	330	904					1,039
Other perinatal conditions	190						
Other upper respiratory infections	189	261					
Noninfectious gastroenteritis	181	406					
Viral infection	180						
Asthma	178	1,414	128				
Fever of unknown origin	176						
Esophageal disorders	174						
Skin and subcutaneous tissue infections		568	194	2,318	1,813		
Intestinal infection		433					
Epilepsy, convulsions		409					
Sickle cell anemia		303	153	1,444			
Affective disorders			281	1,828			
Appendicitis and other appendiceal conditions			270				
Poisoning by other medications and drugs			147	1,031			
Fracture of lower limb			137				
Diabetes mellitus with complications			130	1,631	1,816		
Other mental conditions			125				
Urinary tract infections			117			2,766	1,392
Nonspecific chest pain				2,027	4,941	2,584	
Other complications of pregnancy				1,341			
Schizophrenia and related disorders				1,264			
Biliary tract disease				1,226			
Coronary atherosclerosis and other heart disease					4,013	3,484	
Congestive heart failure, non-hypertensive					3,985	7,608	2,436
Acute myocardial infarction					2,356	2,632	642
Acute cerebrovascular disease					2,021	3,214	923
Chronic obstructive pulmonary disease and bronchiectasis					1,723	2,952	
Cardiac dysrhythmias					1,459	2,891	691
Septicemia (except in labor)						2,500	947
Fracture of neck of femur (hip)							926
Aspiration pneumonitis, food/vomitus							559
Total of Top 10 ER Admissions	3,192	6,193	1,682	15,432	26,871	35,639	11,474
Total Number of ER Admissions	4,728	10,340	4,211	51,303	67,206	79,398	22,456

Note: The shadowed figures show the highest frequency of occurrence in the age group.

Table 8. Top 10 Principal Procedures Louisiana, 2003-2004

Rank	Principal Procedures 2003	# of Discharges	% of all Disch.	Rate *	Principal Procedures 2004	# of Discharges	% of all Disch.	Rate *
1	Low Cervical Cesarean Section	14,162	4.7	31.5	Low Cervical Cesarean Section	20,151	5.7	44.7
2	Other Procedures to Assist Delivery	11,886	4.0	26.5	Circumcision	16,370	4.6	36.3
3	Circumcision	11,126	3.7	24.8	Other Procedures to Assist Delivery	15,716	4.5	34.9
4	Left Heart Cardiac Catheterization	9,594	3.2	21.4	Left Heart Cardiac Catheterization	10,760	3.1	23.9
5	Single Vessel Percutaneous Transluminal Coronary Angioplasty (PTCA)	8,472	2.8	18.9	Single Vessel Percutaneous Transluminal Coronary Angioplasty (PTCA)	10,407	3.0	23.1
6	Transfusion of Packed Cells	7,314	2.4	16.3	Transfusion of Packed Cells	8,789	2.5	19.5
7	Esophagogastroduodenoscopy with closed biopsy	6,956	2.3	15.5	Esophagogastroduodenoscopy with closed biopsy	7,792	2.2	17.3
8	Venous Catheterization, not classified elsewhere	6,603	2.2	14.7	Total Abdominal Hysterectomy	7,717	2.2	17.1
9	Hemodialysis	6,187	2.1	13.8	Venous Catheterization, not classified elsewhere	7,480	2.1	16.6
10	Prophylactic Administration of Vaccines	6,005	2.0	13.4	Repair of Current Obstetric Laceration including Pelvic Floor, Perineum and Vulva	6,762	1.9	15.0
	Total of Top 10 Procedures	88,305	29.5	196.7	Total of Top 10 Procedures	111,944	31.8	248.4
	Total # of Procedures	299,044	100.0	666.0	Total # of Procedures	352,293	100.0	781.7

*Note: Shadowed areas indicate rank unchanged for this two-year period, * Rate per 10,000 Louisiana Population, U.S. Census Bureau Estimate July 1, 2003 (4,490,380) and July 1, 2004 (4,506,685)*

**Table 9. Top 10 Highest Average Charged Principal Diagnoses
Louisiana, 2003-2004**

Rank	Principal Diagnoses 2003	Avg* Charges	Avg ** LOS	Principal Diagnoses 2004	Avg* Charges	Avg** LOS
1	Intrauterine hypoxia and birth asphyxia	\$453,690	77	Immunity disorders	\$171,024	20
2	Short gestation, low birth weight, and fetal growth retardation	\$136,566	33	Spinal cord injury	\$79,473	15
3	Respiratory distress syndrome	\$105,451	22	Leukemias	\$76,247	12
4	Leukemias	\$75,811	14	Heart valve disorders	\$75,808	8
5	Spinal cord injury	\$69,062	15	Respiratory distress syndrome	\$75,091	41
6	Heart valve disorders	\$67,323	8	Cardiac and circulatory congenital anomalies	\$74,992	8
7	Respiratory failure, insufficiency, arrest (adult)	\$57,690	13	Other central nervous system infection and poliomyelitis	\$74,307	14
8	Other central nervous system infection and poliomyelitis	\$54,228	16	Aortic, peripheral, and visceral artery aneurysms	\$68,162	7
9	Aortic, peripheral, and visceral artery aneurysms	\$53,102	7	Respiratory failure, insufficiency, arrest (adult)	\$65,415	14
10	Cardiac and circulatory congenital anomalies	\$52,190	7	Short gestation, low birth weight, and fetal growth retardation	\$57,431	18

* Average charges per stay (rounded to the nearest dollar)

** Average length of stay (LOS) in hospital (in days)

**Table 10. Top 10 Least Average Charged Principal Diagnoses
Louisiana, 2003-2004**

Rank	Principal Diagnoses 2003	Avg* Charges	Avg** LOS	Principal Diagnoses 2004	Avg* charges	Avg** LOS
1	Hemolytic jaundice and perinatal jaundice	\$3,476	2	Intrauterine hypoxia and birth asphyxia	\$2,097	2
2	Medical examination/evaluation	\$3,799	3	History of mental disorder, behavioral problems, observation & screening for mental condition	\$2,364	2
3	History of mental disorder, behavioral problems, observation & screening for mental condition	\$4,019	5	Hemolytic jaundice and perinatal jaundice	\$3,104	2
4	Immunizations and screening for infectious disease	\$5,249	5	Birth trauma	\$3,765	1
5	Other screening for suspected conditions (not mental disorders or infectious diseases)	\$5,416	2	Medical examination/evaluation	\$3,964	2
6	Diabetes or abnormal glucose tolerance complicating pregnancy and childbirth	\$5,930	3	Forceps delivery	\$6,294	2
7	Mental retardation	\$6,005	3	Diabetes or abnormal glucose tolerance complicating pregnancy and childbirth	\$6,311	3
8	Substance-related mental disorders	\$6,159	5	Normal pregnancy and/or delivery	\$6,390	2
9	Induced abortion	\$6,217	2	Umbilical cord complication	\$6,400	2
10	Allergic reactions	\$6,238	3	Acute and chronic tonsillitis	\$6,532	2

*Note: * Average charges per stay (rounded to the nearest dollar)*

*** Average length of stay in hospital (in days)*

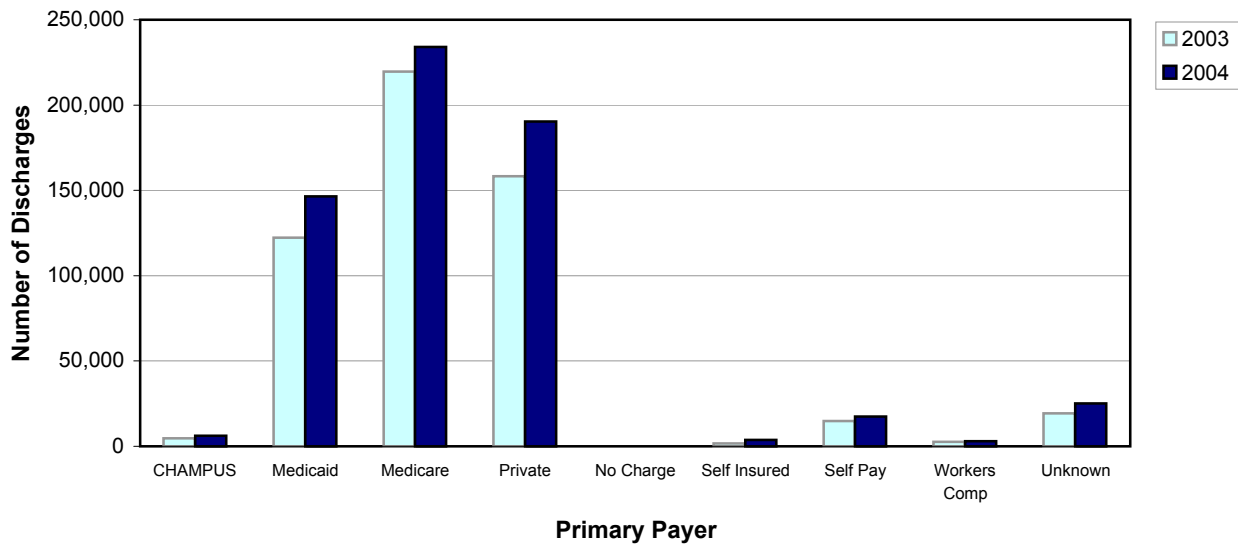
**Table 11. Top 10 Principal Diagnoses with the Longest Average Hospital Stay
Louisiana, 2003-2004**

Rank	Principal Diagnoses 2003	Avg* Charges	Avg** LOS	Principal Diagnoses 2004	Avg* Charges	Avg** LOS
1	Intrauterine hypoxia and birth asphyxia	\$453,690	77	Respiratory distress syndrome	\$75,091	41
2	Short gestation, low birth weight, and fetal growth retardation	\$136,566	33	Immunity disorders	\$171,024	20
3	Respiratory distress syndrome	\$105,451	22	Preadult disorders	\$16,577	19
4	Late effects of cerebrovascular disease	\$32,681	17	Short gestation, low birth weight, and fetal growth retardation	\$57,431	18
5	Chronic ulcer of skin	\$39,302	16	Other aftercare	\$37,865	18
6	Other central nervous system infection and poliomyelitis	\$54,228	16	Late effects of cerebrovascular disease	\$31,915	16
7	Spinal cord injury	\$69,062	15	Chronic ulcer of skin	\$41,677	16
8	Other aftercare	\$36,745	15	Spinal cord injury	\$79,473	15
9	Leukemias	\$75,811	14	Schizophrenia and related disorders	\$15,697	15
10	Rehabilitation care, fitting of prostheses, and adjustment of devices	\$26,230	13	Tuberculosis	\$40,761	14

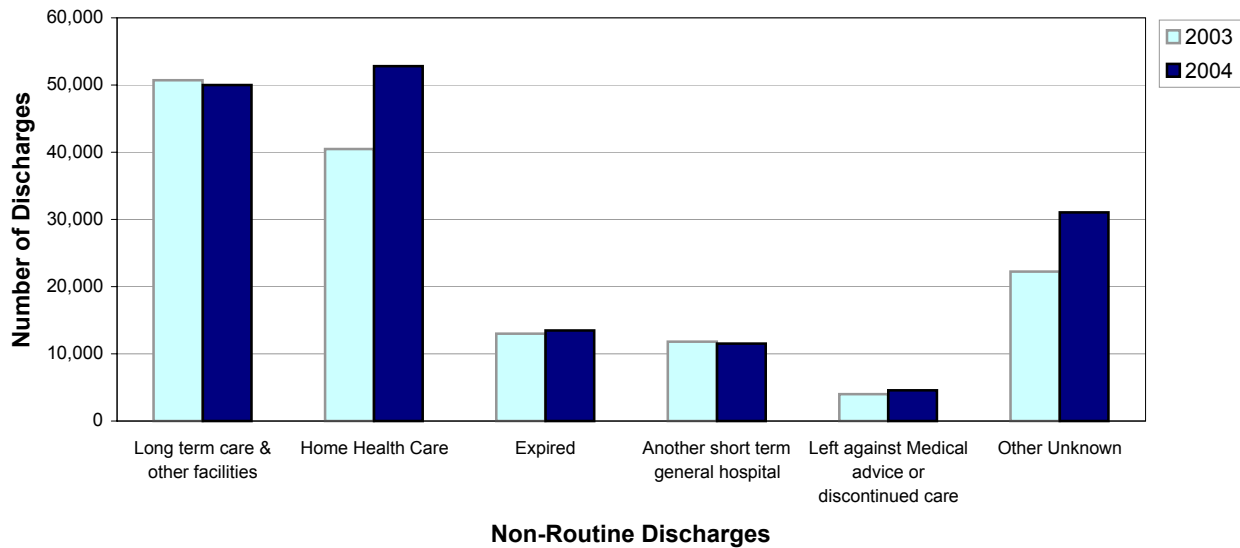
*Note: * Average charges per stay (rounded to the nearest dollar)*

***Average length of stay (LOS) in hospital (in days)*

**Chart 7. Number of Hospital Discharges by Primary Payer
Louisiana, 2003-2004**



**Chart 8. Number of Non-Routine Hospital Discharges
Louisiana, 2003-2004**



**Table 12. Top 10 Principal Diagnoses Charged to Medicare
Louisiana, 2003-2004**

Rank	Principal Diagnoses 2003	# of Discharges	% of all Disch.	Rate *	Principal Diagnoses 2004	# of Discharges	% of all Disch.	Rate *
1	Congestive heart failure, non-hypertensive	15,514	7.1	34.5	Congestive heart failure, non-hypertensive	16,554	7.1	36.7
2	Pneumonia (except that caused by TB or STDs)	12,485	5.7	27.8	Coronary atherosclerosis and other heart disease	11,889	5.1	26.4
3	Coronary atherosclerosis and other heart disease	10,944	5.0	24.4	Pneumonia (except that caused by TB or STDs)	11,838	5.1	26.3
4	Rehabilitation care, fitting of prostheses, and devices	8,587	3.9	19.1	Rehabilitation care, fitting of prostheses, and devices	9,664	4.1	21.4
5	Cardiac dysrhythmias	6,531	3.0	14.5	Urinary tract infections	7,123	3.0	15.8
6	Chronic obstructive pulmonary disease and bronchiectasis	6,522	3.0	14.5	Cardiac dysrhythmias	7,024	3.0	15.6
7	Urinary tract infections	6,017	2.7	13.4	Chronic obstructive pulmonary disease and bronchiectasis	6,154	2.6	13.7
8	Acute cerebrovascular disease	5,658	2.6	12.6	Fluid and electrolyte disorders	6,087	2.6	13.5
9	Fluid and electrolyte disorders	5,537	2.5	12.3	Complication of device, implant or graft	5,944	2.5	13.2
10	Complication of device, implant or graft	5,466	2.5	12.2	Acute cerebrovascular disease	5,782	2.5	12.8
Total of Top 10 Discharges		83,261	37.9	185.4	Total of Top 10 Discharges	88,059	37.6	195.4
Total # of Discharges paid by Medicare		219,653	100.0	489.2	Total # of Discharges paid by Medicare	234,142	100.0	519.5

*Note: Shadowed areas indicate rank unchanged for this two-year period, * Rate per 10,000 Louisiana Population, U.S. Census Bureau Estimate July 1, 2003 (4,490,380) and July 1, 2004 (4,506,685)*

**Table 13. Top 10 Principal Diagnoses Charged to Private Insurers
Louisiana, 2003-2004**

Rank	Principal Diagnoses 2003	# of Discharges	% of all Disch.	Rate *	Principal Diagnoses 2004	# of Discharges	% of all Disch.	Rate *
1	Liveborn	13,084	8.3	29.1	Liveborn	19,691	10.3	43.7
2	Coronary atherosclerosis and other heart disease	6,741	4.3	15.0	Coronary atherosclerosis and other heart disease	7,499	3.9	16.6
3	Nonspecific chest pain	4,755	3.0	10.6	Nonspecific chest pain	5,483	2.9	12.2
4	Pneumonia (except that caused by TB or STDs)	4,531	2.9	10.1	Spondylosis, intervertebral disc disorders, other back problems	4,370	2.3	9.7
5	Spondylosis, intervertebral disc disorders, other back problems	3,996	2.5	8.9	Pneumonia (except that caused by TB or STDs)	4,261	2.2	9.5
6	Congestive heart failure, non-hypertensive	3,283	2.1	7.3	Other complications of birth, puerperium affecting management of mother	4,082	2.1	9.1
7	Skin and subcutaneous tissue infections	3,241	2.0	7.2	Skin and subcutaneous tissue infections	4,004	2.1	8.9
8	Affective disorders	2,975	1.9	6.6	Congestive heart failure, non-hypertensive	3,590	1.9	8.0
9	Fluid and electrolyte disorders	2,814	1.8	6.3	Fluid and electrolyte disorders	3,308	1.7	7.3
10	Acute myocardial infarction	2,740	1.7	6.1	Previous C-section	3,265	1.7	7.2
Total of Top 10 Discharges paid by Private Insurers		48,160	30.4	107.3	Total of Top 10 Discharges paid by Private Insurers	59,553	31.3	132.1
Total # of Discharges paid by Private Insurers		158,279	100.0	352.5	Total # of Discharges paid by Private Insurers	190,408	100.0	422.5

*Note: Shadowed areas indicate rank unchanged for this two-year period, * Rate per 10,000 Louisiana Population, U.S. Census Bureau Estimate July 1, 2003 (4,490,380) and July 1, 2004 (4,506,685)*

**Table 14. Top 10 Principal Diagnoses Charged to Medicaid
Louisiana, 2003-2004**

Rank	Principal Diagnoses 2003	# of Discharges	% of all Disch.	Rate *	Principal Diagnoses 2004	# of Discharges	% of all Disch.	Rate *
1	Liveborn	20,315	16.6	45.2	Liveborn	26,168	17.9	58.1
2	Other complications of pregnancy	5,435	4.4	12.1	Other complications of pregnancy	6,595	4.5	14.6
3	Other complications of birth, puerperium affecting management of mother	4,836	4.0	10.8	Other complications of birth, puerperium affecting management of mother	6,257	4.3	13.9
4	Pneumonia (except that caused by TB or STDs)	4,417	3.6	9.8	Pneumonia (except that caused by TB or STDs)	4,463	3.0	9.9
5	Schizophrenia and related disorders	3,202	2.6	7.1	Previous C-section	4,149	2.8	9.2
6	Affective disorders	2,969	2.4	6.6	Asthma	3,974	2.7	8.8
7	Asthma	2,959	2.4	6.6	Trauma to perineum and vulva	3,621	2.5	8.0
8	Previous C-section	2,958	2.4	6.6	Normal pregnancy and/or delivery	3,491	2.4	7.7
9	Fluid and electrolyte disorders	2,912	2.4	6.5	Acute bronchitis	3,399	2.3	7.5
10	Trauma to perineum and vulva	2,715	2.2	6.0	Fluid and electrolyte disorders	3,196	2.2	7.1
	Total of Top 10 Discharges paid by Medicaid	52,718	43.1	117.4	Total of Top 10 Discharges paid by Medicaid	65,313	44.6	144.9
	Total # of Discharges paid by Medicaid	122,365	100.0	272.5	Total # of Discharges paid by Medicaid	146,510	100.0	325.1

*Note: Shadowed areas indicate rank unchanged for this two-year period, * Rate per 10,000 Louisiana Population, U.S. Census Bureau Estimate July 1, 2003 (4,490,380) and July 1, 2004 (4,506,685)*

**Table 15. Top 10 Principal Diagnoses of Patients who Leave Against Medical Advice
Louisiana, 2003-2004**

Rank	Principal Diagnoses 2003	# of Discharges	% of all Disch.	Rate *	Principal Diagnoses 2004	# of Discharges	% of all Disch.	Rate *
1	Substance-related mental disorders	591	14.7	1.3	Substance-related mental disorders	619	13.5	1.4
2	Nonspecific chest pain	199	5.0	0.4	Nonspecific chest pain	202	4.4	0.4
3	Congestive heart failure, non-hypertensive	167	4.2	0.4	Congestive heart failure, non-hypertensive	167	3.7	0.4
4	Pneumonia (except that caused by TB or STDs)	143	3.6	0.3	Skin and subcutaneous tissue infections	164	3.6	0.4
5	Alcohol-related mental disorders	139	3.5	0.3	Alcohol-related mental disorders	148	3.2	0.3
6	Skin and subcutaneous tissue infections	131	3.3	0.3	Coronary atherosclerosis and other heart disease	144	3.1	0.3
7	Coronary atherosclerosis and other heart disease	126	3.1	0.3	Diabetes mellitus with complications	130	2.8	0.3
8	Affective disorders	91	2.3	0.2	Pneumonia (except that caused by TB or STDs)	121	2.6	0.3
9	Diabetes mellitus with complications	91	2.3	0.2	Affective disorders	112	2.4	0.2
10	Chronic obstructive pulmonary disease and bronchiectasis	88	2.2	0.2	Other complications of pregnancy	99	2.2	0.2
	Total of Top 10 Leave Against Medical Advice	1,766	44.0	3.9	Total of Top 10 Leave Against Medical Advice	1,906	41.7	4.2
	Total # of Discharges Leave Against Medical Advice	4,015	100.0	8.9	Total # of Discharges Leave Against Medical Advice	4,574	100.0	10.1

*Note: Shadowed areas indicate rank unchanged for this two-year period, * Rate per 10,000 Louisiana Population, U.S. Census Bureau Estimate July 1, 2003 (4,490,380) and July 1, 2004 (4,506,685).*

**Table 16. Top 10 Principal Diagnoses of Patients Discharged to LTC¹ and Other Facilities
Louisiana, 2003-2004**

Rank	Principal Diagnoses 2003	# of Discharges	% of all Disch.	Rate *	Principal Diagnoses 2004	# of Discharges	% of all Disch.	Rate *
1	Pneumonia (except that caused by TB or STDs)	3,871	7.6	8.6	Pneumonia (except that caused by TB or STDs)	3,300	6.6	7.3
2	Urinary tract infections	2,695	5.3	6.0	Urinary tract infections	2,733	5.5	6.1
3	Congestive heart failure, non-hypertensive	2,633	5.2	5.9	Congestive heart failure, non-hypertensive	2,550	5.1	5.7
4	Acute cerebrovascular disease	2,030	4.0	4.5	Septicemia (except in labor)	2,056	4.1	4.6
5	Septicemia (except in labor)	1,873	3.7	4.2	Acute cerebrovascular disease	1,684	3.4	3.7
6	Fluid and electrolyte disorders	1,631	3.2	3.6	Rehabilitation care, fitting of prostheses, and adjustment of devices	1,648	3.3	3.7
7	Fracture of neck of femur (hip)	1,590	3.1	3.5	Fluid and electrolyte disorders	1,581	3.2	3.5
8	Senility and organic mental disorders	1,390	2.7	3.1	Senility and organic mental disorders	1,545	3.1	3.4
9	Rehabilitation care, fitting of prostheses, and adjustment of devices	1,368	2.7	3.0	Fracture of neck of femur (hip)	1,379	2.8	3.1
10	Aspiration pneumonitis, food/vomitus	1,236	2.4	2.8	Aspiration pneumonitis, food/vomitus	1,220	2.4	2.7
Total of Top 10 Discharged to LTC¹ and Other Facilities		20,317	40.1	45.2	Total of Top 10 Discharged to LTC¹ and Other Facilities	19,696	39.4	43.7
Total # of Discharges to LTC¹ and Other Facilities		50,633	100.0	112.8	Total # of Discharges to LTC¹ and Other Facilities	50,000	100.0	110.9

*Note: Shadowed areas indicate rank unchanged for this two-year period, * Rate per 10,000 Louisiana Population, U.S. Census Bureau Estimate July 1, 2003 (4,490,380) and July 1, 2004 (4,506,685).*

LTC¹ stands for Long Term Care.

LTC¹ and Other Facilities include skilled nursing facilities, intermediate care facilities, and another type (non-short term hospital) of institution.

**Table 17. Top 10 Principal Diagnoses of Discharges Resulting in In-Hospital Death
Louisiana, 2003-2004**

Rank	Principal Diagnoses 2003	# of Discharges	% of all Disch.	Rate *	Principal Diagnoses 2004	# of Discharges	% of all Disch.	Rate *
1	Septicemia (except in labor)	1,161	8.9	2.6	Septicemia (except in labor)	1,395	10.3	3.1
2	Pneumonia (except that caused by TB or STDs)	1,069	8.2	2.4	Acute cerebrovascular disease	942	7.0	2.1
3	Acute cerebrovascular disease	878	6.8	2.0	Congestive heart failure, non-hypertensive	905	6.7	2.0
4	Congestive heart failure, non-hypertensive	871	6.7	1.9	Pneumonia (except that caused by TB or STDs)	894	6.6	2.0
5	Acute myocardial infarction	777	6.0	1.7	Respiratory failure, insufficiency, arrest (adult)	794	5.9	1.8
6	Respiratory failure, insufficiency, arrest (adult)	633	4.9	1.4	Acute myocardial infarction	711	5.3	1.6
7	Aspiration pneumonitis, food/vomitus	426	3.3	0.9	Aspiration pneumonitis, food/vomitus	410	3.0	0.9
8	Cancer of bronchus, lung	357	2.7	0.8	Secondary malignancies	379	2.8	0.8
9	Secondary malignancies	330	2.5	0.7	Cancer of bronchus, lung	362	2.7	0.8
10	Acute and unspecified renal failure	269	2.1	0.6	Liveborn	324	2.4	0.7
Total of Top 10 with In-Hospital Death		6,771	52.1	15.1	Total of Top 10 with In-Hospital Death	7,116	52.7	15.8
Total # of Discharges with In Hospital Death		12,995	100.0	28.9	Total # of Discharges with In Hospital Death	13,499	100.0	30.0

*Note: Shadowed areas indicate rank unchanged for this two-year period, * Rate per 10,000 Louisiana Population, U.S. Census Bureau Estimate July 1, 2003 (4,490,380) and July 1, 2004 (4,506,685).*

**Table 18. Top 3 In-Hospital Death Counts by Principal Diagnoses and Age Group
Louisiana, 2004**

Principal Diagnoses	Discharges by Age Group in Years						
	< 1	1-12	13-17	18-44	45-64	65-84	85 & +
Liveborn	324						
Cardiac and circulatory congenital anomalies	16						
Septicemia (except in labor)	8			48	302	715	320
Intracranial injury		10	7	60			
Other injuries and conditions due to external causes		6					
Residual codes, unclassified		6	5				
Acute cerebrovascular disease		5		60	254		
Respiratory failure, insufficiency, arrest (adult)		5	3		159	467	
HIV infection				73			
Congestive heart failure, non-hypertensive						503	275
Pneumonia (except that caused by TB and STDs)							277
Total of Top 3 In-Hospital Deaths	348	32	15	241	715	1,685	872
Total In-Hospital Deaths in 2004	386	57	32	819	2,836	6,559	2,810

Note: The Bolded figures show the highest count in the age group.

Hospital Inpatient Discharge Data

Louisiana

LAHIDD Report



Louisiana vs. U.S. Summary 2004

State vs. United States 2004

This section summarizes information about hospital discharge data in Louisiana relative to the United States for 2003-2004.

Louisiana and the US* share most of the same top ten principal diagnoses for hospitalization. In 2003 and 2004, liveborn, pneumonia (except that caused by tuberculosis or STDs), coronary atherosclerosis and congestive heart failure, nonhypertensive were the top four diagnoses in both the U.S. and Louisiana (*Table 19a-b, pgs. 30-31*).

At least five of the top ten procedures during hospital stays were related to pregnancy, childbirth and perinatal care in both Louisiana and the United States (*Table 20a-b, pgs. 32-33*).

Total amounts charged for principal diagnoses in both the US* and Louisiana are shown in Tables 21a-b, pgs. 34-35. For both 2003 and 2004, coronary atherosclerosis, pneumonia (except that caused by tuberculosis or STDs), Liveborn, acute myocardial infarction and Congestive heart failure, nonhypertensive topped the list of those diagnoses with the highest total charges.

The top three principal diagnoses, along with their corresponding top five procedures, are shown in Tables 22a-b, pgs. 36-37. Average hospital charges per admission, average lengths of stay per discharge, and average patient age per discharge are also listed.

* Not all states are included

**Table 19a. Top 10 Principal Diagnoses Discharges
Louisiana vs. U.S.*, 2003**

Louisiana						U.S.*				
Rank	Principal Diagnosis	Discharges	%	Avg** Charges	Avg*** LOS	Principal Diagnosis	Discharges	%	Avg** Charges	Avg*** LOS
1	Liveborn	36,594	6.7	\$7,815	4.1	Liveborn	4,089,219	10.7	\$6,071	3.2
2	Pneumonia (except that caused by TB or STDs)	22,461	4.1	\$19,193	6.0	Pneumonia (except that caused by TB and STDs)	1,314,590	3.4	\$19,817	5.7
3	Congestive heart failure, nonhypertensive	21,627	4.0	\$20,543	5.5	Coronary atherosclerosis	1,256,548	3.3	\$35,143	3.5
4	Coronary atherosclerosis and other heart disease	20,164	3.7	\$31,877	3.5	Congestive heart failure, nonhypertensive	1,119,934	2.9	\$23,924	5.5
5	Rehabilitation care, fitting of prostheses, and adjustment of devices	12,038	2.2	\$26,230	13.3	Nonspecific chest pain	862,117	2.3	\$10,904	1.8
6	Nonspecific chest pain	11,821	2.2	\$9,545	2.0	Acute myocardial infarction	750,719	2.0	\$41,928	5.4
7	Fluid and electrolyte disorders	11,761	2.2	\$9,008	3.6	Trauma to perineum and vulva	748,166	2.0	\$6,176	2.0
8	Affective disorders	11,425	2.1	\$10,670	8.6	Affective disorders	713,882	1.9	\$12,098	7.3
9	Skin and subcutaneous tissue infections	10,689	2.0	\$11,403	4.9	Other complications of birth, puerperium affecting management of the mother	712,227	1.9	\$8,820	2.7
10	Chronic obstructive pulmonary disease and bronchiectasis	10,020	1.8	\$17,005	5.3	Cardiac dysrhythmias	708,041	1.9	\$23,071	3.5

*Source: HCUPnet, Healthcare Cost and Utilization Project. Agency for Healthcare Research and Quality, Rockville, MD

<http://www.ahrq.gov/data/hcup/hcupnet.htm>

Note: Shadowed areas indicate the same rank in both Louisiana and U.S.

**Average charges per stay

*** Average length of stay (LOS) in hospital (in days)

**Table 19b. Top 10 Principal Diagnoses Discharges
Louisiana vs. USA*, 2004**

Louisiana						USA*				
Rank	Principal Diagnosis	Discharges	%	Avg** Charges	Avg*** LOS	Principal Diagnosis	Discharges	%	Avg** Charges	Avg*** LOS
1	Liveborn	48,797	7.8	\$8,751	4.1	Liveborn	4,249,339	11.0	\$6,595	3.3
2	Congestive heart failure, nonhypertensive	23,292	3.7	\$22,117	5.3	Pneumonia (except that caused by TB or STDs)	1,213,468	3.1	\$21,388	5.7
3	Coronary atherosclerosis and other heart disease	22,673	3.6	\$38,036	3.5	Coronary atherosclerosis and other heart disease	1,192,392	3.1	\$37,226	3.4
4	Pneumonia (except that caused by TB or STDs)	21,619	3.4	\$20,167	5.9	Congestive heart failure, nonhypertensive	1,104,365	2.9	\$25,850	5.5
5	Nonspecific chest pain	13,886	2.2	\$10,478	1.9	Nonspecific chest pain	845,707	2.2	\$11,228	1.9
6	Rehabilitation care, fitting of prostheses, and adjustment of devices	13,685	2.2	\$28,461	13.4	Trauma to vulva and perineum	785,100	2.0	\$6,681	2.0
7	Fluid and electrolyte disorders	13,123	2.1	\$9,435	3.5	Other maternal complications of birth and puerperium	758,356	2.0	\$9,598	2.7
8	Skin and subcutaneous tissue infections	12,876	2.1	\$11,847	4.6	Affective disorders	708,894	1.8	\$12,301	7.3
9	Affective disorders	12,577	2.0	\$10,936	8.5	Heart attack (acute myocardial infarction)	695,062	1.8	\$45,076	5.4
10	Urinary tract infections	11,469	1.8	\$14,006	4.8	Cardiac dysrhythmias	693,687	1.8	\$23,732	3.5

*Source: HCUPnet, Healthcare Cost and Utilization Project. Agency for Healthcare Research and Quality, Rockville, MD

<http://www.ahrq.gov/data/hcup/hcupnet.htm>

Note: Shadowed areas indicate the same rank in both Louisiana and USA

**Average charges per stay (rounded to the next dollar)

*** Average length of stay (LOS) in hospital (in days)

**Table 20a. Top 10 Principal Procedures Discharges
Louisiana vs. U.S.*, 2003**

Louisiana				U.S.*		
Rank	Principal Procedures	Discharges	%	Principal Procedure	Discharges	%
1	Cesarean section	14,517	2.7	Other procedures to assist delivery	1,333,659	5.7
2	Other procedures to assist delivery	12,315	2.3	Cesarean section	1,168,280	5.0
3	Diagnostic cardiac catheterization, coronary arteriography	11,373	2.1	Circumcision	1,093,322	4.7
4	Upper gastrointestinal endoscopy, biopsy	11,239	2.1	Upper gastrointestinal (GI) endoscopy	712,105	3.1
5	Circumcision	11,126	2.0	Diagnostic cardiac catheterization, coronary arteriography	707,077	3.0
6	Percutaneous transluminal coronary angioplasty (PTCA)	11,042	2.0	Repair of obstetric laceration	694,422	3.0
7	Respiratory intubation and mechanical ventilation	8,231	1.5	Percutaneous transluminal coronary angioplasty (PTCA)	675,673	2.9
8	Blood transfusion	7,946	1.5	Respiratory intubation and mechanical ventilation	616,788	2.6
9	Hysterectomy, abdominal and vaginal	7,683	1.4	Hysterectomy	588,225	2.5
10	Other vascular catheterization, not heart	7,117	1.3	Vaccinations	555,707	2.4

*Source: HCUPnet, Healthcare Cost and Utilization Project. Agency for Healthcare Research and Quality, Rockville, MD

Note: Shadowed areas indicate the same rank in both Louisiana and U.S.

Table 20b. Top 10 Principal Procedures Discharges
Louisiana vs. USA*, 2004

Louisiana				USA*		
Rank	Principal Procedures	Discharges	%	Principal Procedures	Discharges	%
1	Cesarean section	20,656	3.3	Other procedures to assist delivery	1,472,994	3.8
2	Circumcision	16,370	2.6	Cesarean section	1,268,420	3.3
3	Other procedures to assist delivery	16,279	2.6	Circumcision	1,102,667	2.9
4	Percutaneous transluminal coronary angioplasty (PTCA)	13,711	2.2	Upper gastrointestinal endoscopy, biopsy	731,239	1.9
5	Upper gastrointestinal endoscopy, biopsy	12,730	2.0	Percutaneous transluminal coronary angioplasty (PTCA)	720,927	1.9
6	Diagnostic cardiac catheterization, coronary arteriography	12,463	2.0	Repair of obstetric laceration	680,536	1.8
7	Hysterectomy, abdominal and vaginal	10,933	1.7	Respiratory intubation and mechanical ventilation	676,430	1.7
8	Blood transfusion	9,523	1.5	Diagnostic cardiac catheterization, coronary arteriography	638,946	1.7
9	Respiratory intubation and mechanical ventilation	8,726	1.4	Hysterectomy (removal of the uterus)	574,564	1.5
10	Other vascular catheterization, not heart	8,206	1.3	Blood transfusion	568,245	1.5

*Source: HCUPnet, Healthcare Cost and Utilization Project. Agency for Healthcare Research and Quality, Rockville, MD
<http://www.ahrq.gov/data/hcup/hcupnet.htm>

**Table 21a. Top 10 Charges for Principal Discharges
Louisiana vs. U.S.*, 2003**

Louisiana					U.S.*			
Rank	Principal Diagnosis	Discharges	%	Aggregate charges	Principal Diagnosis	Discharges	%	Aggregate charges
1	Coronary atherosclerosis and other heart disease	20,164	3.7	\$642,767,501	Hardening of the heart arteries and other heart disease	1,256,548	3.3	\$44,158,244,278
2	Congestive heart failure, nonhypertensive	21,627	4.0	\$444,281,849	Heart attack (acute myocardial infarction)	750,719	2.0	\$31,475,951,499
3	Pneumonia (except that caused by TB or STD)	22,461	4.1	\$431,105,038	Congestive heart failure	1,119,934	2.9	\$26,793,235,129
4	Acute myocardial infarction	9,153	1.7	\$366,013,535	Pneumonia	1,314,590	3.4	\$26,051,607,813
5	Complication of device, implant or graft	9,125	1.7	\$329,600,030	Newborn infant	4,089,219	10.7	\$24,823,692,504
6	Rehabilitation care, fitting of prostheses, and adjustment of devices	12,038	2.2	\$315,759,700	Complication of medical device, implant or graft	597,070	1.6	\$22,557,497,096
7	Liveborn	36,594	6.7	\$285,984,712	Osteoarthritis	584,876	1.5	\$17,955,325,553
8	Acute cerebrovascular disease	8,860	1.6	\$211,820,698	Spondylosis, intervertebral disc disorders	658,121	1.7	\$16,703,830,868
9	Septicemia (except in labor)	6,632	1.2	\$210,963,261	Acute cerebrovascular disease	559,655	1.5	\$16,530,943,197
10	Spondylosis, intervertebral disc disorders, other back problems	7,934	1.5	\$204,367,350	Cardiac dysrhythmias	708,041	1.9	\$16,334,881,166

*Source: HCUPnet, Healthcare Cost and Utilization Project. Agency for Healthcare Research and Quality, Rockville, MD

<http://www.ahrq.gov/data/hcup/hcupnet.htm>

Note: Shadowed areas indicate the same rank in both Louisiana and U.S.

**Table 21b. Top 10 Charges for Principal Diagnosis
Louisiana vs. USA*, 2004**

Louisiana					USA*			
Rank	Principal Diagnosis	Discharges	%	Aggregate charges	Principal Diagnosis	Discharges	%	Aggregate charges
1	Coronary atherosclerosis and other heart disease	22,673	3.6	\$862,393,486	Coronary atherosclerosis and other heart disease	1,192,392	3.1	\$44,466,040,190
2	Congestive heart failure, non-hypertensive	23,292	3.7	\$515,158,176	Heart attack (acute myocardial infarction)	695,062	1.8	\$31,290,628,878
3	Pneumonia (except that caused by TB or STDs)	21,619	3.4	\$435,991,126	Congestive heart failure, non-hypertensive	1,104,365	2.9	\$28,562,252,799
4	Acute myocardial infarction	9,159	1.5	\$430,436,585	Newborn infant	4,249,339	11.0	\$27,928,448,918
5	Liveborn	48,797	7.8	\$427,000,947	Pneumonia (except that caused by TB or STDs)	1,213,468	3.1	\$25,964,942,048
6	Rehabilitation care, fitting of prostheses, and adjustment of devices	13,685	2.2	\$389,482,494	Complication of device, implant or graft	601,183	1.6	\$22,286,553,910
7	Complication of device, implant or graft	9,984	1.6	\$376,825,563	Osteoarthritis (degenerative joint disease)	659,368	1.7	\$21,831,899,404
8	Septicemia (except in labor)	7,965	1.3	\$294,874,088	Septicemia (except in labor)	451,806	1.2	\$17,845,236,870
9	Spondylosis, intervertebral disc disorders, other back problems	9,151	1.5	\$265,308,412	Spondylosis, intervertebral disc disorders, other back problems	615,698	1.6	\$17,199,194,810
10	Osteoarthritis	6,921	1.1	\$256,268,995	Cardiac dysrhythmias (irregular heart beat)	693,687	1.8	\$16,487,444,661

*Source: HCUPnet, Healthcare Cost and Utilization Project. Agency for Healthcare Research and Quality, Rockville, MD

<http://www.ahrq.gov/data/hcup/hcupnet.htm>

Note: Shadowed areas indicate the same rank in both Louisiana and USA

**Table 22a. Top 3 Principal Diagnoses with Corresponding Top 5 Principal Procedures
Louisiana vs. U.S.*, 2003**

Louisiana				U.S.*			
Principal Diagnoses & Top 5 Principal Procedures	# of Discharges	Avg*** Charges	Avg** LOS	Principal Diagnoses & Top 5 Principal Procedures	# of Discharges	Avg*** Charges	Avg** LOS
1 Liveborn	36,594	\$7,815	4.1	Liveborn	4,089,219	\$6,096	3.2
Circumcision	11,071	\$3,650	2.8	Circumcision	1,084,673	\$2,954	2.5
Prophylactic vaccinations and inoculations	5,969	\$2,343	2.7	Prophylactic vaccinations and inoculations	547,493	\$3,346	2.4
Ophthalmologic and otologic diagnosis and treatment	1,648	\$4,003	2.8	Ophthalmologic and otologic diagnosis and treatment	215,202	\$2,420	2.4
Respiratory intubation and mechanical ventilation	1,067	\$96,447	27.3	Respiratory intubation and mechanical ventilation	89,626	\$79,091	20.8
Other therapeutic procedures	834	\$14,763	8.3	Other therapeutic procedures	86,594	\$18,392	7.9
2 Pneumonia (except that caused by TB or STDs)	22,461	\$19,193	6.0	Pneumonia (except that caused by TB and STDs)	1,314,590	\$19,771	5.7
Respiratory intubation and mechanical ventilation	833	\$72,350	11.7	Respiratory intubation and mechanical ventilation	53,304	\$68,115	11.3
Diagnostic bronchoscopy and biopsy of bronchus	742	\$36,987	10.2	Other therapeutic procedures	39,956	\$14,466	4.9
Other therapeutic procedures	591	\$22,187	5.2	Diagnostic bronchoscopy and biopsy of bronchus	38,628	\$37,697	9.6
Other vascular catheterization, not heart	509	\$38,637	11.1	Blood transfusion	30,203	\$24,067	7.1
Blood transfusion	503	\$25,488	7.9	Other vascular catheterization, not heart	29,948	\$32,118	9.0
3 Congestive heart failure, nonhypertensive	21,627	\$20,543	5.5	Coronary atherosclerosis	1,256,548	\$35,003	3.5
Diagnostic cardiac catheterization, coronary arteriography	1,100	\$29,423	6.3	Percutaneous coronary angioplasty (PTCA)	382,989	\$34,994	2.1
Hemodialysis	874	\$15,475	3.8	Diagnostic cardiac catheterization, coronary arteriography	246,713	\$20,739	2.8
Respiratory intubation and mechanical ventilation	563	\$41,808	7.8	Coronary artery bypass graft (CABG)	210,342	\$77,088	8.1
Insertion, revision, replacement, removal of cardiac pacemaker or cardioverter/defibrillator	501	\$66,026	7.0	Other non-OR therapeutic cardiovascular procedures	51,359	\$36,578	1.8
Blood transfusion	425	\$24,075	6.8	Insertion, revision, replacement, removal of cardiac pacemaker or cardioverter/defibrillator	12,701	\$100,619	5.5

*Source: HCUPnet, Healthcare Cost and Utilization Project. Agency for Healthcare Research
and Quality, Rockville, MD
<http://www.ahrq.gov/data/hcup/hcupnet.htm>

Note: Shadowed areas indicate the same rank in both Louisiana and U.S.

** Average length of stay (LOS) in hospital (in days)

***Average charges per stay

**Table 22b. Top 3 Principal Diagnoses with Corresponding Top 5 Principal Procedures
Louisiana vs. USA*, 2004**

Louisiana					USA*			
	Principal Diagnoses & Top 5 Principal Procedures	# of Discharges	Avg* Charges	Avg** LOS	Principal Diagnoses & Top 5 Principal Procedures	# of Discharges	Avg* Charges	Avg** LOS
1	Liveborn	48,797	\$8,751	4.1	Liveborn	4,249,339	\$6,595	3.3
	Circumcision	16,286	\$3,399	2.8	Circumcision	1,091,604	\$3,409	2.6
	Prophylactic vaccinations and inoculations	6,324	\$2,651	2.7	Prophylactic vaccinations and inoculations	537,782	\$2,894	2.4
	Ophthalmologic and otologic diagnosis and treatment	1,664	\$3,933	2.7	Ophthalmologic and otologic diagnosis and treatment	181,861	\$3,397	2.5
	Respiratory intubation and mechanical ventilation	1,385	\$114,500	27.6	Respiratory intubation and mechanical ventilation	115,046	\$69,631	18.0
	Other therapeutic procedures	1,164	\$16,776	8.4	Other therapeutic procedures	98,418	\$19,831	7.7
2	Congestive heart failure, nonhypertensive	23,292	\$22,117	5.3	Pneumonia (except that caused by TB or STDs)	1,213,468	\$21,388	5.7
	Diagnostic catheterization, coronary arteriography	1,170	\$32,615	6.3	Respiratory intubation and mechanical ventilation	47,873	\$70,035	11.7
	Hemodialysis	888	\$18,022	4.1	Diagnostic bronchoscopy and biopsy of bronchus	37,751	\$39,062	9.4
	Insertion/replacement removal of cardiac pacemaker	677	\$79,660	6.0	Blood transfusion	31,824	\$25,955	7.1
	Other therapeutic procedures	636	\$22,638	5.3	Other therapeutic procedures	31,477	\$17,978	5.4
	Respiratory intubation and mechanical ventilation	555	\$43,550	8.0	Other vascular catheterization, not heart	28,132	\$34,985	9.3
3	Coronary atherosclerosis	22,673	\$38,036	3.5	Coronary atherosclerosis	1,192,392	\$37,226	3.4
	Percutaneous transluminal coronary angioplasty (PTCA)	8,615	\$41,221	2.1	Percutaneous coronary angioplasty (PTCA)	432,330	\$40,166	2.0
	Diagnostic cardiac catheterization, coronary arteriography	4,624	\$21,839	2.9	Diagnostic cardiac catheterization, coronary arteriography	219,712	\$21,183	2.8
	Coronary artery bypass graft (CABG)	3,463	\$80,601	8.0	Coronary artery bypass graft (CABG)	185,767	\$78,424	8.2
	Heart valve procedures	164	\$126,742	12.3	Insertion, revision, replacement, removal of cardiac pacemaker or cardioverter/defibrillator	15,190	\$100,176	4.7
	Insertion, revision, replacement, removal of cardiac pacemaker or cardioverted	163	\$86,897	5.4	Cardiac stress tests	8,870	\$15,023	2.6

*Source: HCUPnet, Healthcare Cost and Utilization Project. Agency for Healthcare Research and Quality, Rockville,
<http://www.ahrq.gov/data/hcup/hcupnet.htm>

Note: Shadowed areas indicate the same rank in both Louisiana and USA

**Average charges per stay (rounded to the next dollar)

*** Average length of stay (LOS) in hospital (in days)

Hospital Inpatient Discharge Data



Parish Summary 2004

Parish Summary

This section summarizes information about inpatient hospital discharge data by parish of patient residence for the year 2004. All parish percentages for principal diagnoses are derived from the total number of discharges for each parish.

The highest numbers of discharges in the year 2004 were from the following parishes: **Orleans 63,831, Jefferson 58,054, East Baton Rouge 48,520, Caddo 32,582, and St. Tammany 30,978 (Table 23, pg. 42).**

Table 24, pg. 43 shows the percentage of discharges for Louisiana's top 5 principal diagnoses by parish. *

Table 25, pg. 44 illustrates percentages of parish discharges for top 5 principal diagnoses resulting in in-hospital death. *

Table 26, pgs. 45-46 shows percentages and average charges for each payer by parish. The payers considered for this table are as follows: Medicare, Private (Blue Cross, Blue Shield and all other HMOs), Medicaid, No Charge (Free, Charity, Sp. Research, and Teaching), CHAMPUS (now called TRICARE), Self Pay, Workers Comp., Self Insured and Other-Unknown-Missing.

Each parish percentage in the following tables is calculated with respect to the total of all the discharges for a particular diagnosis.

Table 27, pg. 47 illustrates the percentage of Louisiana's top five diagnoses by parish.

Table 28, pg. 48 shows the percentage of Louisiana's top five diagnoses resulting in in-hospital death by parish. Each parish percentage is derived as a total of all the discharges for the particular diagnosis resulting in an in-hospital death.

Table 29, pg. 49 presents percentage of discharge by status

Table 30, pgs. 50-52 shows number of discharges by principal diagnoses and health region.

* The highest values have been highlighted.

**Table 23. Hospital Inpatient Discharges by Parish
Louisiana, 2004**

PARISH	# of Discharges	% of total Discharges
ACADIA	8,759	1.4
ALLEN	1,897	0.3
ASCENSION	10,683	1.7
ASSUMPTION	2,623	0.4
AVOYELLES	6,079	1.0
BEAUREGARD	1,453	0.2
BIENVILLE	2,351	0.4
BOSSIER	11,625	1.9
CADDO	32,582	5.2
CALCASIEU	20,128	3.2
CALDWELL	2,086	0.3
CAMERON	722	0.1
CATAHOULA	1,530	0.2
CLAIBORNE	2,805	0.4
CONCORDIA	1,595	0.3
DE SOTO	3,717	0.6
EAST BATON ROUGE	48,520	7.7
EAST CARROLL	1,038	0.2
EAST FELICIANA	3,395	0.5
EVANGELINE	7,768	1.2
FRANKLIN	3,627	0.6
GRANT	3,049	0.5
IBERIA	7,692	1.2
IBERVILLE	4,992	0.8
JACKSON	3,304	0.5
JEFFERSON	58,054	9.3
JEFFERSON DAVIS	5,116	0.8
LA SALLE	3,125	0.5
LAFAYETTE	24,490	3.9
LAFOURCHE	7,445	1.2
LINCOLN	4,827	0.8
LIVINGSTON	13,699	2.2
MADISON	1,577	0.3
MOREHOUSE	3,051	0.5
NATCHITOCHEs	6,247	1.0
ORLEANS	63,831	10.2
OUACHITA	22,322	3.6
PLAQUEMINES	3,375	0.5
POINTE COUPEE	3,142	0.5
RAPIDES	21,075	3.4
RED RIVER	2,086	0.3
RICHLAND	3,816	0.6
SABINE	3,341	0.5
ST. BERNARD	12,454	2.0
ST. CHARLES	6,162	1.0
ST. HELENA	1,165	0.2
ST. JAMES	2,629	0.4
ST. JOHN	5,471	0.9
ST. LANDRY	15,750	2.5
ST. MARTIN	6,924	1.1
ST. MARY	8,101	1.3
ST. TAMMANY	30,978	4.9
TANGIPAHOA	17,827	2.8
TENSAS	1,837	0.3
TERREBONNE	8,849	1.4
UNION	4,237	0.7
VERMILION	7,763	1.2
VERNON	9,446	1.5
WASHINGTON	8,296	1.3
WEBSTER	7,388	1.2
WEST BATON ROUGE	2,882	0.5
WEST CARROLL	1,272	0.2
WEST FELICIANA	1,241	0.2
WINN	3,279	0.5
MISSING	9	0.0
OUT OF STATE	18,101	2.9
ALL DISCHARGES	626,700	100.0

Table 24. Percent of Total Parish Discharges for Louisiana's Top 5 Diagnoses, 2004

PARISH	Liveborn	Congestive heart failure, nonhypertensive	Coronary atherosclerosis and other heart disease	Pneumonia (except that caused by TB or STD)	Nonspecific chest pain	Total # of Discharges by Parish
ACADIA	4.3	3.1	4.1	5.3	1.3	8,759
ALLEN	6.1	3.1	3.0	5.6	2.1	1,897
ASCENSION	12.2	2.7	2.2	2.5	2.0	10,683
ASSUMPTION	6.1	4.8	2.4	4.3	2.8	2,623
AVOUELLES	7.3	4.0	4.6	3.8	2.5	6,079
BEAUREGARD	7.1	3.8	2.8	5.8	2.0	1,453
BIENVILLE	2.1	4.5	3.9	6.8	2.6	2,351
BOSSIER	6.6	3.0	3.4	3.0	3.1	11,625
CADDO	4.3	4.1	3.3	3.3	3.1	32,582
CALCASIEU	7.4	3.6	2.5	3.8	2.6	20,128
CALDWELL	3.7	4.7	5.0	3.6	3.2	2,086
CAMERON	5.5	2.9	3.3	2.9	3.3	722
CATAHOULA	3.1	6.0	8.4	5.0	3.1	1,530
CLAIBORNE	1.2	3.9	2.9	10.3	1.2	2,805
CONCORDIA	0.4	7.4	9.5	6.0	3.4	1,595
DE SOTO	3.6	5.0	4.0	4.5	3.1	3,717
EAST BATON ROUGE	10.6	2.8	1.8	2.5	1.6	48,520
EAST CARROLL	5.2	6.9	3.9	4.1	3.4	1,038
EAST FELICIANA	7.1	3.6	2.7	4.8	2.0	3,395
EVANGELINE	5.3	4.2	3.5	5.1	1.0	7,768
FRANKLIN	2.3	5.4	5.2	5.1	2.9	3,627
GRANT	7.2	3.6	6.4	4.0	2.1	3,049
IBERIA	10.2	2.7	6.0	2.6	2.0	7,692
IBERVILLE	7.9	3.6	2.9	3.3	1.7	4,992
JACKSON	1.7	4.0	3.9	7.1	2.7	3,304
JEFFERSON	9.9	3.7	3.0	2.6	1.8	58,054
JEFFERSON DAVIS	4.6	5.2	3.1	4.5	2.4	5,116
LA SALLE	4.2	6.6	6.2	6.6	2.1	3,125
LAFAYETTE	10.6	3.2	4.2	2.9	1.3	24,490
LAFOURCHE	7.2	4.1	1.9	3.8	3.6	7,445
LINCOLN	1.9	4.7	3.6	3.9	3.1	4,827
LIVINGSTON	10.9	2.8	3.2	2.4	2.8	13,699
MADISON	1.8	2.4	1.7	4.4	2.0	1,577
MOREHOUSE	4.3	3.9	6.1	2.9	2.7	3,051
NATCHITOCHES	3.3	3.3	4.7	8.8	2.4	6,247
ORLEANS	10.3	3.9	2.1	2.5	2.0	63,831
OUACHITA	6.0	4.0	4.3	3.4	2.6	22,322
PLAQUEMINES	11.8	3.9	2.8	3.6	1.7	3,375
POINTE COUPEE	8.3	2.5	2.0	5.2	2.4	3,142
RAPIDES	8.1	3.4	4.8	3.7	2.6	21,075
RED RIVER	2.5	5.3	3.7	9.6	2.5	2,086
RICHLAND	4.2	3.9	5.6	5.6	2.6	3,816
SABINE	4.5	4.4	6.5	3.7	2.6	3,341
ST. BERNARD	7.0	4.8	4.7	3.9	2.3	12,454
ST. CHARLES	10.8	2.8	3.1	2.1	2.0	6,162
ST. HELENA	8.0	3.5	2.4	4.2	1.4	1,165
ST. JAMES	9.5	5.1	2.2	2.9	2.6	2,629
ST. JOHN	12.1	3.6	3.3	2.3	2.0	5,471
ST. LANDRY	5.5	3.9	4.3	3.4	1.4	15,750
ST. MARTIN	10.4	3.2	4.4	3.8	1.2	6,924
ST. MARY	6.3	5.0	5.0	3.3	1.7	8,101
ST. TAMMANY	9.3	3.2	5.0	3.4	2.8	30,978
TANGIPAHOA	8.5	5.1	3.6	3.2	2.9	17,827
TENSAS	5.3	5.9	3.8	4.0	2.5	1,837
TERREBONNE	6.7	3.2	1.4	3.6	2.9	8,849
UNION	2.6	3.8	4.9	4.6	3.5	4,237
VERMILION	9.4	3.6	5.3	3.6	1.4	7,763
VERNON	6.0	4.9	4.9	5.7	2.4	9,446
WASHINGTON	7.1	4.1	7.9	2.8	2.1	8,296
WEBSTER	2.4	3.8	4.8	5.1	1.9	7,388
WEST BATON ROUGE	10.8	3.1	2.3	2.5	1.7	2,882
WEST CARROLL	3.4	3.9	11.2	3.9	3.0	1,272
WEST FELICIANA	7.8	1.6	1.5	4.9	1.8	1,241
WINN	2.1	4.1	6.0	8.3	2.2	3,279
Missing	11.1	0.0	0.0	0.0	0.0	9
Out of State	3.0	2.7	4.6	2.4	2.6	18,101
LA Patient Residency	7.8	3.7	3.6	3.4	2.2	626,700

Table 25. Percent of Total Parish Discharges for Louisiana's Top 5 Principal Diagnoses resulting in In-hospital Death, Louisiana 2004

PARISH	Septicemia (except in labor)	Acute cerebrovascular disease	Congestive heart failure, nonhypertensive	Pneumonia (except that caused by TB or STD)	Respiratory failure, insufficiency, arrest	Total # of discharges by Parish
ACADIA	9.0	4.5	10.7	10.2	6.2	177
ALLEN	11.1	8.9	2.2	6.7	6.7	45
ASCENSION	9.5	8.9	8.3	4.2	3.0	168
ASSUMPTION	5.1	6.8	16.9	10.2	11.9	59
AVOYELLES	9.6	8.8	8.8	11.0	4.4	136
BEAUREGARD	6.7	3.3	6.7	13.3	0.0	30
BIENVILLE	18.2	9.1	6.5	14.3	2.6	77
BOSSIER	7.9	5.1	5.1	6.9	17.1	216
CADDO	11.1	6.1	6.3	7.0	9.7	846
CALCASIEU	7.6	7.4	6.1	7.2	6.8	458
CALDWELL	4.7	14.0	9.3	2.3	2.3	43
CAMERON	8.3	16.7	0.0	8.3	0.0	24
CATAHOULA	10.5	13.2	7.9	7.9	2.6	38
CLAIBORNE	20.9	3.0	13.4	11.9	9.0	67
CONCORDIA	8.3	5.6	11.1	5.6	8.3	36
DE SOTO	15.9	7.3	4.9	7.3	7.3	82
EAST BATON ROUGE	13.2	7.4	5.8	4.8	5.5	995
EAST CARROLL	5.9	0.0	0.0	0.0	11.8	17
EAST FELICIANA	12.2	6.1	4.1	10.2	5.1	98
EVANGELINE	22.6	5.2	5.8	4.5	1.9	155
FRANKLIN	3.8	3.8	11.5	15.4	1.9	104
GRANT	4.9	7.3	2.4	2.4	9.8	41
IBERIA	11.1	7.8	1.7	9.4	6.7	180
IBERVILLE	11.4	4.9	4.1	11.4	6.5	123
JACKSON	14.6	12.2	6.1	13.4	4.9	82
JEFFERSON	7.5	6.2	8.0	5.1	4.9	1,187
JEFFERSON DAVIS	11.6	9.5	8.4	2.1	5.3	95
LA SALLE	10.0	12.0	8.0	16.0	8.0	50
LAFAYETTE	8.2	6.7	8.4	4.9	4.4	550
LAFOURCHE	12.9	5.0	5.8	6.5	10.1	139
LINCOLN	11.2	7.8	8.6	12.1	6.0	116
LIVINGSTON	11.3	5.6	8.0	5.2	5.2	213
MADISON	4.3	8.5	4.3	10.6	2.1	47
MOREHOUSE	18.3	2.8	2.8	8.5	4.2	71
NATCHITOCHES	7.4	7.4	5.9	10.3	8.8	136
ORLEANS	10.3	8.7	5.7	6.6	3.8	1,391
OUACHITA	11.4	6.6	8.2	4.4	3.4	473
PLAQUEMINES	7.7	13.8	7.7	7.7	4.6	65
POINTE COUPEE	8.1	12.9	4.8	6.5	6.5	62
RAPIDES	10.3	6.0	6.4	5.8	6.9	467
RED RIVER	12.1	6.9	6.9	8.6	5.2	58
RICHLAND	12.0	1.3	4.0	4.0	6.7	75
SABINE	9.0	2.6	6.4	5.1	12.8	78
ST. BERNARD	8.0	7.4	8.0	5.2	7.1	325
ST. CHARLES	9.3	7.2	3.1	3.1	5.2	97
ST. HELENA	11.8	0.0	14.7	8.8	2.9	34
ST. JAMES	10.9	9.1	12.7	10.9	7.3	55
ST. JOHN	8.3	8.3	7.3	6.3	5.2	96
ST. LANDRY	12.9	7.3	7.6	7.0	4.2	356
ST. MARTIN	8.4	7.1	3.2	5.8	5.2	154
ST. MARY	12.1	5.2	5.2	6.9	4.7	232
ST. TAMMANY	7.2	5.2	7.2	7.0	5.2	597
TANGIPAHOA	11.1	10.6	8.2	4.7	4.7	379
TENSAS	9.8	7.3	9.8	9.8	4.9	41
TERREBONNE	4.7	8.1	6.8	6.1	4.7	148
UNION	9.9	7.7	5.5	12.1	2.2	91
VERMILION	8.7	7.6	8.7	6.0	4.3	184
VERNON	15.5	5.3	7.0	9.6	10.2	187
WASHINGTON	11.1	6.1	5.6	6.1	6.1	180
WEBSTER	18.2	6.3	5.1	6.3	6.3	176
WEST BATON ROUGE	9.8	5.9	3.9	2.0	0.0	51
WEST CARROLL	12.5	12.5	6.3	6.3	6.3	16
WEST FELICIANA	15.6	15.6	0.0	3.1	12.5	32
WINN	17.8	3.3	1.1	13.3	12.2	90
Missing	0.0	0.0	0.0	0.0	0.0	0
Out of State	8.1	6.1	5.9	6.1	0.0	408
State	9.1	7.0	6.7	6.6	5.9	13,499

Table 26. Percentage and Average Charges for Source of Charge by Parish, Louisiana, 2004

Parish	CHAMPUS		Medicaid		Medicare		Private		Total # of Discharges
	%	Avg*\$	%	Avg*\$	%	Avg*\$	%	Avg*\$	
ACADIA	0.1	38,416	32.6	7,628	36.2	17,891	22.4	12,339	8,759
ALLEN	0.1	4,538	22.8	13,776	43.2	16,905	25.7	17,532	1,897
ASCENSION	0.4	10,754	21.2	9,706	25.3	19,532	47.2	12,137	10,683
ASSUMPTION	0.3	12,999	22.2	11,071	46.0	17,375	22.6	13,189	2,623
AVOYELLES	0.7	20,723	27.4	12,373	43.8	21,045	21.7	16,488	6,079
BEAUREGARD	0.5	15,185	22.2	11,930	44.0	19,758	29.5	15,242	1,453
BIENVILLE	0.8	34,755	18.0	10,673	51.9	19,960	18.5	14,720	2,351
BOSSIER	10.0	12,942	13.2	11,229	38.5	27,264	28.7	16,827	11,625
CADDO	1.9	10,834	16.0	11,540	47.7	25,519	25.3	17,266	32,582
CALCASIEU	0.4	14,515	22.5	13,047	40.6	22,309	30.9	16,798	20,128
CALDWELL	0.4	9,274	22.5	6,747	47.7	22,593	23.2	16,217	2,086
CAMERON	0.1	23,913	17.2	12,310	39.2	26,313	35.5	18,032	722
CATAHOULA	0.4	12,336	21.0	10,721	54.4	18,235	19.4	16,859	1,530
CLAIBORNE	0.3	9,630	24.3	8,035	47.3	19,799	18.0	11,820	2,805
CONCORDIA	0.4	10,514	20.6	12,211	55.7	17,825	17.4	15,790	1,595
DE SOTO	0.6	14,644	15.0	11,304	51.3	21,772	23.9	16,429	3,717
EAST BATON ROUGE	0.5	14,081	26.2	9,896	31.7	16,895	36.0	13,074	48,520
EAST CARROLL	0.3	5,265	34.5	8,407	46.1	16,586	11.7	13,639	1,038
EAST FELICIANA	0.4	4,279	21.6	11,377	40.9	16,662	29.7	12,986	3,395
EVANGELINE	0.4	8,374	31.4	11,059	44.9	20,582	13.8	14,654	7,768
FRANKLIN	0.3	16,031	21.8	7,154	55.1	14,895	18.4	16,404	3,627
GRANT	1.5	14,008	25.0	11,307	38.9	23,730	28.0	18,662	3,049
IBERIA	0.4	17,732	27.7	11,455	39.9	23,897	24.3	16,332	7,692
IBERVILLE	0.1	6,510	28.2	15,839	35.9	24,075	25.9	17,311	4,992
JACKSON	0.2	13,640	19.5	10,275	52.3	16,184	20.9	12,475	3,304
JEFFERSON	0.6	17,948	22.3	15,970	28.2	30,559	39.6	28,127	58,054
JEFFERSON DAVIS	0.2	7,243	21.6	7,909	45.9	14,309	26.2	10,384	5,116
LA SALLE	0.4	14,907	20.6	10,375	54.5	16,415	20.6	14,294	3,125
LAFAYETTE	0.5	21,748	23.9	10,562	34.9	23,471	32.2	16,754	24,490
LAFOURCHE	0.5	16,914	23.9	9,783	40.7	15,252	26.3	14,445	7,445
LINCOLN	0.5	8,020	20.9	11,762	42.7	20,527	27.4	14,175	4,827
LIVINGSTON	0.6	13,570	23.3	11,065	25.3	20,590	44.0	14,520	13,699
MADISON	7.8	7,617	34.4	5,345	34.4	14,241	12.0	12,194	1,577
MOREHOUSE	0.3	19,051	21.3	16,429	48.0	30,197	21.5	21,205	3,051
NATCHITOCHE	1.1	14,502	24.5	8,759	43.4	19,153	22.5	12,230	6,247
ORLEANS	0.5	16,667	31.3	17,057	29.5	34,704	28.5	31,119	63,831
OUACHITA	0.5	15,723	20.1	10,511	42.7	24,258	29.4	16,905	22,322
PLAQUEMINES	6.7	11,982	24.3	20,540	21.6	35,165	40.9	30,051	3,375
POINTE COUPEE	0.7	6,316	28.3	9,040	36.8	14,663	28.9	12,139	3,142
RAPIDES	1.3	16,799	27.5	13,078	40.1	24,060	25.1	17,284	21,075
RED RIVER	1.1	13,105	19.0	9,916	54.4	18,637	18.0	19,708	2,086
RICHLAND	0.2	8,185	21.5	7,809	52.8	16,501	20.8	16,420	3,816
SABINE	0.6	26,537	18.7	11,061	52.0	25,170	19.4	15,533	3,341
ST. BERNARD	0.5	30,520	20.0	16,610	38.4	34,737	35.9	25,765	12,454
ST. CHARLES	0.4	23,870	20.8	11,918	30.0	26,480	40.7	19,399	6,162
ST. HELENA	0.8	13,074	28.0	14,445	40.1	20,106	25.0	20,997	1,165
ST. JAMES	0.2	8,797	24.5	11,044	39.6	23,143	28.2	16,910	2,629
ST. JOHN	0.5	11,559	27.2	14,874	31.3	31,264	34.9	21,756	5,471
ST. LANDRY	0.4	11,930	29.8	10,584	42.1	19,828	19.9	13,889	15,750
ST. MARTIN	0.1	8,806	25.5	10,102	40.1	20,789	27.4	16,038	6,924
ST. MARY	0.6	12,441	19.8	12,106	44.4	20,894	20.5	17,263	8,101
ST. TAMMANY	1.4	25,151	17.1	16,500	31.0	33,507	45.1	27,049	30,978
TANGIPAHOA	0.7	25,309	27.8	16,546	41.3	27,291	23.2	19,290	17,827
TENSAS	0.4	5,350	25.6	13,888	38.1	24,711	28.5	28,597	1,837
TERREBONNE	0.6	13,747	31.3	10,556	34.1	16,499	24.7	14,155	8,849
UNION	0.6	13,173	16.7	11,239	46.5	19,237	28.3	16,456	4,237
VERMILION	0.5	27,155	24.7	9,392	38.8	19,136	27.0	16,812	7,763
VERNON	4.5	19,385	23.0	11,512	44.1	23,625	23.6	17,995	9,446
WASHINGTON	0.5	22,868	27.9	16,431	42.4	31,198	22.8	24,572	8,296
WEBSTER	0.8	13,180	17.7	9,762	47.5	19,333	21.3	15,469	7,388
WEST BATON ROUGE	0.6	18,734	24.4	12,611	29.9	18,699	39.0	14,018	2,882
WEST CARROLL	0.2	59,128	19.3	11,705	54.9	23,543	17.8	16,838	1,272
WEST FELICIANA	0.2	9,459	20.8	9,729	33.9	16,011	30.9	14,548	1,241
WINN	0.6	19,208	19.7	10,800	52.9	19,279	18.9	16,468	3,279
Missing	0.0	(**)	22.2	12,465	22.2	19,631	44.4	11,934	9
Out of State	2.2	24,243	6.1	34,097	41.5	35,078	40.0	32,735	18,101
State	1.0	16,381	23.4	12,983	37.4	24,563	30.4	20,582	626,700

Note: Avg*\$ stands for average charges in dollars

(**) Division by zero

Continued

Table 26. (Cont.) Percentage and Average Charges for Source of Charge by Parish, Louisiana, 2004

Parish	Self Insured		Self Pay		Workers Comp		Other, Unknown		Total # of Discharges
	%	Avg*\$	%	Avg*\$	%	Avg*\$	%	Avg*\$	
ACADIA	0.1	13,482	4.2	9,955	0.7	19,679	3.7	12,946	8,759
ALLEN	0.2	47,041	3.5	11,584	0.8	34,611	3.7	15,945	1,897
ASCENSION	0.1	17,071	3.7	13,087	0.4	21,513	1.7	10,827	10,683
ASSUMPTION	0.0	39,710	3.1	8,996	0.3	39,354	5.3	10,639	2,623
AVOYELLES	0.2	17,293	2.0	13,812	0.9	22,370	3.4	10,791	6,079
BEAUREGARD	0.4	18,247	2.2	16,745	0.3	30,929	1.0	4,641	1,453
BIENVILLE	2.2	15,777	2.6	11,801	0.5	16,880	5.5	21,623	2,351
BOSSIER	2.6	9,152	1.3	13,767	0.8	14,702	4.9	14,977	11,625
CADDO	3.8	10,365	1.3	14,740	0.5	17,699	3.6	14,553	32,582
CALCASIEU	0.6	20,836	2.3	17,270	0.4	36,083	2.2	9,723	20,128
CALDWELL	1.0	25,299	0.9	12,693	0.4	25,018	4.0	9,327	2,086
CAMERON	0.7	13,081	2.8	16,194	1.1	24,808	3.5	7,068	722
CATAHOULA	0.9	21,815	1.2	16,220	0.2	16,034	2.5	9,850	1,530
CLAIBORNE	1.2	20,043	4.0	8,021	1.5	21,289	3.4	16,369	2,805
CONCORDIA	0.7	12,086	0.8	37,254	0.4	27,835	4.1	9,966	1,595
DE SOTO	2.8	9,726	0.8	12,735	0.6	37,257	5.1	16,754	3,717
EAST BATON ROUGE	0.1	9,039	2.7	12,382	0.4	25,120	2.4	10,769	48,520
EAST CARROLL	1.3	22,079	0.5	3,093	0.3	15,599	5.3	10,283	1,038
EAST FELICIANA	0.1	1,463	1.6	11,425	0.4	24,055	5.3	11,110	3,395
EVANGELINE	0.6	9,892	2.9	12,365	0.5	19,963	5.5	10,931	7,768
FRANKLIN	0.5	15,735	0.3	10,157	0.4	24,665	3.2	7,486	3,627
GRANT	0.5	16,410	1.9	18,001	0.7	21,539	3.5	10,968	3,049
IBERIA	0.1	24,514	3.2	12,886	0.8	29,956	3.6	13,402	7,692
IBERVILLE	0.0	1,887	2.5	14,311	0.4	20,871	7.0	13,426	4,992
JACKSON	0.9	13,895	3.4	8,267	0.3	11,529	2.4	9,550	3,304
JEFFERSON	0.4	21,436	4.6	18,556	0.4	38,690	3.9	12,971	58,054
JEFFERSON DAVIS	0.2	25,742	3.9	6,781	0.7	19,465	1.3	11,548	5,116
LA SALLE	0.4	11,367	0.8	22,005	0.8	20,516	2.0	15,742	3,125
LAFAYETTE	0.0	12,579	3.3	15,536	0.6	18,714	4.5	13,150	24,490
LAFOURCHE	0.1	45,655	3.0	9,886	0.5	23,340	5.0	8,395	7,445
LINCOLN	0.8	17,695	4.6	12,348	0.2	15,172	2.8	13,321	4,827
LIVINGSTON	0.3	20,110	4.2	12,337	0.5	23,809	1.8	14,691	13,699
MADISON	0.6	13,560	6.1	3,975	0.3	15,757	4.4	9,047	1,577
MOREHOUSE	1.3	16,850	0.8	20,235	0.1	14,897	6.8	9,027	3,051
NATCHITOCHES	1.5	12,529	4.1	9,504	0.5	17,202	2.4	13,356	6,247
ORLEANS	0.1	43,061	2.1	23,894	0.3	34,686	7.8	13,594	63,831
OUACHITA	1.3	13,385	0.5	18,420	0.3	22,904	5.3	8,365	22,322
PLAQUEMINES	0.3	33,145	3.2	22,486	0.3	27,564	2.8	15,076	3,375
POINTE COUPEE	0.0	(**)	3.6	7,835	0.3	9,589	1.5	15,882	3,142
RAPIDES	0.3	14,433	2.2	19,440	0.4	21,969	3.1	11,189	21,075
RED RIVER	1.5	9,541	2.5	12,279	0.6	17,989	2.8	14,410	2,086
RICHLAND	0.5	21,657	0.2	22,946	0.2	40,041	3.9	8,480	3,816
SABINE	2.7	11,483	2.2	12,099	0.7	18,124	3.7	12,410	3,341
ST. BERNARD	0.1	50,132	1.6	16,747	0.6	44,989	2.9	15,788	12,454
ST. CHARLES	0.2	20,329	4.9	12,491	0.4	25,361	2.5	14,146	6,162
ST. HELENA	0.3	8,988	3.4	11,733	0.5	14,148	2.0	8,427	1,165
ST. JAMES	0.1	19,213	3.5	11,556	0.5	27,521	3.4	14,717	2,629
ST. JOHN	0.0	51,382	2.4	19,595	0.6	29,563	3.1	14,867	5,471
ST. LANDRY	0.3	20,628	4.1	11,878	0.7	21,447	2.8	12,456	15,750
ST. MARTIN	0.0	18,320	2.4	12,127	0.9	21,998	3.5	12,335	6,924
ST. MARY	0.0	11,162	1.7	13,215	0.5	25,743	12.5	11,337	8,101
ST. TAMMANY	0.1	36,313	3.2	22,516	0.3	42,977	1.7	17,832	30,978
TANGIPAHOA	1.0	13,115	2.9	16,275	0.4	37,121	2.7	17,340	17,827
TENSAS	0.4	11,545	3.9	14,328	0.7	41,208	2.6	10,971	1,837
TERREBONNE	0.2	38,477	1.2	17,407	0.4	16,120	7.6	9,990	8,849
UNION	1.3	19,094	2.4	13,644	0.5	18,683	3.5	9,132	4,237
VERMILION	0.1	12,220	4.4	8,359	1.0	20,370	3.6	19,597	7,763
VERNON	0.4	14,644	2.2	15,818	0.6	29,172	1.7	18,273	9,446
WASHINGTON	0.2	39,785	1.1	23,197	0.3	41,456	4.8	11,526	8,296
WEBSTER	2.1	11,926	2.2	8,491	0.3	19,635	8.0	19,917	7,388
WEST BATON ROUGE	0.0	(**)	2.8	10,960	0.5	26,167	2.8	15,803	2,882
WEST CARROLL	1.5	12,903	0.7	6,152	0.2	37,646	5.5	8,761	1,272
WEST FELICIANA	0.2	4,171	2.7	11,271	0.2	57,731	11.1	12,956	1,241
WINN	0.6	24,524	3.7	13,346	0.9	16,345	2.6	11,730	3,279
Missing	0.0	(**)	11.1	(**)	0.0	(**)	0.0	(**)	9
Out of State	0.2	32,936	5.5	21,663	1.5	30,424	2.9	19,695	18,101
State	0.6	14,338	2.8	15,949	0.5	26,761	4.0	13,067	626,700

Note: Avg*\$ stands for average charges in dollars

(**) Division by zero

Table 27. Percent of Louisiana's Top 5 Principal Diagnoses by Parish, Louisiana, 2004

PARISH	Liveborn	Congestive heart failure, nonhypertensive	Coronary atherosclerosis and other heart disease	Pneumonia (except that caused by TB or STDs)	Non specific chest pain
ACADIA	0.8	1.2	1.6	2.2	0.8
ALLEN	0.2	0.2	0.2	0.5	0.3
ASCENSION	2.7	1.2	1.0	1.2	1.5
ASSUMPTION	0.3	0.5	0.3	0.5	0.5
AVOYELLES	0.9	1.0	1.2	1.1	1.1
BEAUREGARD	0.2	0.2	0.2	0.4	0.2
BIENVILLE	0.1	0.5	0.4	0.7	0.4
BOSSIER	1.6	1.5	1.7	1.6	2.6
CADDO	2.9	5.7	4.7	4.9	7.3
CALCASIEU	3.1	3.1	2.3	3.5	3.8
CALDWELL	0.2	0.4	0.5	0.4	0.5
CAMERON	0.1	0.1	0.1	0.1	0.2
CATAHOULA	0.1	0.4	0.6	0.4	0.3
CLAIBORNE	0.1	0.5	0.4	1.3	0.2
CONCORDIA	0.0	0.5	0.7	0.4	0.4
DE SOTO	0.3	0.8	0.6	0.8	0.8
EAST BATON ROUGE	10.6	5.9	3.9	5.6	5.7
EAST CARROLL	0.1	0.3	0.2	0.2	0.3
EAST FELICIANA	0.5	0.5	0.4	0.7	0.5
EVANGELINE	0.8	1.4	1.2	1.8	0.5
FRANKLIN	0.2	0.8	0.8	0.9	0.8
GRANT	0.4	0.5	0.9	0.6	0.5
IBERIA	1.6	0.9	2.0	0.9	1.1
IBERVILLE	0.8	0.8	0.6	0.8	0.6
JACKSON	0.1	0.6	0.6	1.1	0.6
JEFFERSON	11.8	9.2	7.7	7.0	7.3
JEFFERSON DAVIS	0.5	1.1	0.7	1.1	0.9
LA SALLE	0.3	0.9	0.9	0.9	0.5
LAFAYETTE	5.3	3.4	4.5	3.2	2.2
LAFOURCHE	1.1	1.3	0.6	1.3	1.9
LINCOLN	0.2	1.0	0.8	0.9	1.1
LIVINGSTON	3.1	1.6	1.9	1.5	2.8
MADISON	0.1	0.2	0.1	0.3	0.2
MOREHOUSE	0.3	0.5	0.8	0.4	0.6
NATCHITOCHES	0.4	0.9	1.3	2.5	1.1
ORLEANS	13.5	10.8	5.8	7.4	9.0
OUACHITA	2.8	3.8	4.3	3.5	4.2
PLAQUEMINES	0.8	0.6	0.4	0.6	0.4
POINTE COUPEE	0.5	0.3	0.3	0.7	0.5
RAPIDES	3.5	3.1	4.5	3.6	3.9
RED RIVER	0.1	0.5	0.3	0.9	0.4
RICHLAND	0.3	0.6	0.9	1.0	0.7
SABINE	0.3	0.6	1.0	0.6	0.6
ST. BERNARD	1.8	2.6	2.6	2.2	2.1
ST. CHARLES	1.4	0.7	0.8	0.6	0.9
ST. HELENA	0.2	0.2	0.1	0.2	0.1
ST. JAMES	0.5	0.6	0.3	0.4	0.5
ST. JOHN	1.4	0.9	0.8	0.6	0.8
ST. LANDRY	1.8	2.6	3.0	2.5	1.6
ST. MARTIN	1.5	1.0	1.3	1.2	0.6
ST. MARY	1.0	1.7	1.8	1.3	1.0
ST. TAMMANY	5.9	4.3	6.8	4.8	6.2
TANGIPAHOA	3.1	3.9	2.8	2.6	3.7
TENSAS	0.2	0.5	0.3	0.3	0.3
TERREBONNE	1.2	1.2	0.5	1.5	1.8
UNION	0.2	0.7	0.9	0.9	1.1
VERMILION	1.5	1.2	1.8	1.3	0.8
VERNON	1.2	2.0	2.0	2.5	1.6
WASHINGTON	1.2	1.5	2.9	1.1	1.2
WEBSTER	0.4	1.2	1.6	1.8	1.0
WEST BATON ROUGE	0.6	0.4	0.3	0.3	0.4
WEST CARROLL	0.1	0.2	0.6	0.2	0.3
WEST FELICIANA	0.2	0.1	0.1	0.3	0.2
WINN	0.1	0.6	0.9	1.3	0.5
Missing, Unknown, Blank	0.0	0.0	0.0	0.0	0.0
OUT OF STATE	1.1	2.1	3.7	2.0	3.3
Total # of Discharges by Diagnosis	48,797	23,292	22,673	21,619	13,886
Total % of Discharges by Diagnosis	100.00	100.00	100.00	100.00	100.00

Table 28. Percent of Louisiana's Top 5 Principal Diagnoses resulting in In-Hospital Death by Parish, Louisiana 2004

PARISH	Septicemia (except in labor)	Acute cerebro vascular disease	Congestive heart failure, nonhypertensi ve	Pneumonia (except that caused by TB or STD)	Respiratory failure, insufficiency, arrest
ACADIA	1.1	0.8	2.1	2.0	1.4
ALLEN	0.4	0.4	0.1	0.3	0.4
ASCENSION	1.1	1.6	1.5	0.8	0.6
ASSUMPTION	0.2	0.4	1.1	0.7	0.9
AVOUELLES	0.9	1.3	1.3	1.7	0.8
BEAUREGARD	0.1	0.1	0.2	0.4	0.0
BIENVILLE	1.0	0.7	0.6	1.2	0.3
BOSSIER	1.2	1.2	1.2	1.7	4.7
CADDO	6.7	5.5	5.9	6.6	10.3
CALCASIEU	2.5	3.6	3.1	3.7	3.9
CALDWELL	0.1	0.6	0.4	0.1	0.1
CAMERON	0.1	0.4	0.0	0.2	0.0
CATAHOULA	0.3	0.5	0.3	0.3	0.1
CLAIBORNE	1.0	0.2	1.0	0.9	0.8
CONCORDIA	0.2	0.2	0.4	0.2	0.4
DE SOTO	0.9	0.6	0.4	0.7	0.8
EAST BATON ROUGE	9.4	7.9	6.4	5.4	6.9
EAST CARROLL	0.1	0.0	0.0	0.0	0.3
EAST FELICIANA	0.9	0.6	0.4	1.1	0.6
EVANGELINE	2.5	0.8	1.0	0.8	0.4
FRANKLIN	0.3	0.4	1.3	1.8	0.3
GRANT	0.1	0.3	0.1	0.1	0.5
IBERIA	1.4	1.5	0.3	1.9	1.5
IBERVILLE	1.0	0.6	0.6	1.6	1.0
JACKSON	0.9	1.1	0.6	1.2	0.5
JEFFERSON	6.4	7.9	10.5	6.7	7.3
JEFFERSON DAVIS	0.8	1.0	0.9	0.2	0.6
LA SALLE	0.4	0.6	0.4	0.9	0.5
LAFAYETTE	3.2	3.9	5.1	3.0	3.0
LAFOURCHE	1.3	0.7	0.9	1.0	1.8
LINCOLN	0.9	1.0	1.1	1.6	0.9
LIVINGSTON	1.7	1.3	1.9	1.2	1.4
MADISON	0.1	0.4	0.2	0.6	0.1
MOREHOUSE	0.9	0.2	0.2	0.7	0.4
NATCHITOCHES	0.7	1.1	0.9	1.6	1.5
ORLEANS	10.3	12.8	8.7	10.3	6.7
OUACHITA	3.9	3.3	4.3	2.3	2.0
PLAQUEMINES	0.4	1.0	0.6	0.6	0.4
POINTE COUPEE	0.4	0.8	0.3	0.4	0.5
RAPIDES	3.4	3.0	3.3	3.0	4.0
RED RIVER	0.5	0.4	0.4	0.6	0.4
RICHLAND	0.6	0.1	0.3	0.3	0.6
SABINE	0.5	0.2	0.6	0.4	1.3
ST. BERNARD	1.9	2.5	2.9	1.9	2.9
ST. CHARLES	0.6	0.7	0.3	0.3	0.6
ST. HELENA	0.3	0.0	0.6	0.3	0.1
ST. JAMES	0.4	0.5	0.8	0.7	0.5
ST. JOHN	0.6	0.8	0.8	0.7	0.6
ST. LANDRY	3.3	2.8	3.0	2.8	1.9
ST. MARTIN	0.9	1.2	0.6	1.0	1.0
ST. MARY	2.0	1.3	1.3	1.8	1.4
ST. TAMMANY	3.1	3.3	4.8	4.7	3.9
TANGIPAHOA	3.0	4.2	3.4	2.0	2.3
TENSAS	0.3	0.3	0.4	0.4	0.3
TERREBONNE	0.5	1.3	1.1	1.0	0.9
UNION	0.6	0.7	0.6	1.2	0.3
VERMILION	1.1	1.5	1.8	1.2	1.0
VERNON	2.1	1.1	1.4	2.0	2.4
WASHINGTON	1.4	1.2	1.1	1.2	1.4
WEBSTER	2.3	1.2	1.0	1.2	1.4
WEST BATON ROUGE	0.4	0.3	0.2	0.1	0.0
WEST CARROLL	0.1	0.2	0.1	0.1	0.1
WEST FELICIANA	0.4	0.5	0.0	0.1	0.5
WINN	1.1	0.3	0.1	1.3	1.4
Missing	0.0	0.0	0.0	0.0	0.0
Out of State	2.4	2.7	2.7	2.8	4.5
Total # of In-Hospital death by Diagnosis	1,395	942	905	894	794
Total % of In-Hospital death by Diagnosis	100.0	100.0	100.0	100.0	100.0

**Table 29. Percent of Discharge Status by Year
Louisiana, 2003-2004**

Discharge Status	2003		2004	
	Number	Percent	Number	Percent
Discharged to home or self care (routine discharge)	401,029	73.8	463,253	73.9
Long term care and other facilities	50,633	9.3	50,000	8.0
Another short term general hospital	11,810	2.2	11,509	1.8
Mental Health Center	65	0.0	6	0.0
Home Health Care	40,454	7.4	52,807	8.4
Hospice (home/medical facility)	2,212	0.4	3,967	0.6
In-hospital Death	12,995	2.4	13,499	2.2
Left against medical advice or discontinued care	4,015	0.7	4,574	0.7
Other/Unknown	20,006	3.7	27,085	4.3
Total Discharges Status	543,219	100.0	626,700	100.0

**Table 30. Number of Discharges by Principal Diagnoses and Health Region
Louisiana, 2004**

	Liveborn	Congestive heart failure, nonhypertensive	Coronary atherosclerosis and other heart disease
ORLEANS	6,576	2,509	1,323
ST. BERNARD	867	594	580
JEFFERSON	5,772	2,141	1,751
PLAQUEMINES	397	133	94
Health Region 1	13,612	5,377	3,748

	Liveborn	Congestive heart failure, nonhypertensive	Pneumonia (except that caused by TB or STD)
EAST FELICIANA	242	121	162
POINTE COUPEE	260	78	162
EAST BATON ROUGE	5,165	1,371	1,212
WEST BATON ROUGE	312	90	71
WEST FELICIANA	97	20	61
IBERVILLE	394	181	163
ASCENSION	1,300	291	262
Health Region 2	7,770	2,152	2,093

	Liveborn	Congestive heart failure, nonhypertensive	Pneumonia (except that caused by TB or STD)
ST. MARY	509	404	271
TERREBONNE	595	287	316
ST. JOHN	662	199	125
ASSUMPTION	160	126	113
LAFOURCHE	533	306	284
ST. JAMES	250	133	76
ST. CHARLES	664	174	131
Health Region 3	3,373	1,629	1,316

	Liveborn	Coronary atherosclerosis and other heart diseases	Pneumonia (except that caused by TB or STD)
IBERIA	784	459	201
VERMILION	731	409	280
LAFAYETTE	2,593	1,024	701
ST. MARTIN	722	306	261
ACADIA	378	362	465
ST. LANDRY	870	685	539
EVANGELINE	411	271	395
ST. HELENA	93	28	49
Health Region 4	6,582	3,544	2,891

Continued

**Table 30. (Cont.) Number of Discharges by Principal Diagnoses and Health Region
Louisiana 2004**

	Liveborn	Pneumonia (except that caused by TB or STD)	Congestive heart failure, nonhypertensive
JEFFERSON DAVIS	233	231	264
CALCASIEU	1,495	763	715
CAMERON	40	21	21
BEAUREGARD	103	84	55
ALLEN	115	107	58
Health Region 5	1,986	1,206	1,113

	Liveborn	Coronary atherosclerosis and other heart disease	Pneumonia (except that caused by TB or STD)
AVOUELLES	443	278	234
LA SALLE	130	195	205
RAPIDES	1,712	1,017	771
CATAHOULA	48	128	76
CONCORDIA	6	151	95
VERNON	564	459	541
WINN	70	198	273
GRANT	219	194	123
Health Region 6	3,192	2,620	2,318

	Pneumonia (except that caused by TB or STD)	Liveborn	Congestive heart failure, nonhypertensive
RED RIVER	201	53	111
CADD0	1,065	1,415	1,336
SABINE	124	150	147
NATCHITOCHES	548	209	204
CLAIBORNE	290	35	110
WEBSTER	380	174	284
BOSSIER	353	762	346
BIENVILLE	160	49	106
DE SOTO	167	133	187
Health Region 7	3,288	2,980	2,831

Continued

**Table 30. (Cont.) Number of Discharges by Principal Diagnoses and Health Region
Louisiana 2004**

	Coronary atherosclerosis and other heart disease	Liveborn	Congestive heart failure, nonhypertensive
RICHLAND	214	160	148
UNION	209	111	163
FRANKLIN	188	82	196
OUACHITA	971	1,349	891
TENSAS	70	97	109
JACKSON	129	57	131
MADISON	27	29	38
MOREHOUSE	186	130	118
WEST CARROLL	142	43	49
CALDWELL	104	78	97
EAST CARROLL	40	54	72
LINCOLN	173	90	226
Health Region 8	2,453	2,280	2,238

	Liveborn	Coronary atherosclerosis and other heart disease	Congestive heart failure, nonhypertensive
ST. TAMMANY	2,881	1,540	990
WASHINGTON	592	656	344
TANGIPAHOA	1,524	634	910
LIVINGSTON	1,490	432	383
Health Region 9	6,487	3,262	2,627

Hospital Inpatient Discharge Data



Technical Notes 2004

TECHNICAL NOTES

In December 1998, the State Health Care Data Clearinghouse began collecting data related to hospital inpatient discharges from Louisiana's licensed hospitals. The information was submitted from acute care, long-term care, psychiatric, rehabilitation, and specialty hospitals.

The Louisiana Hospital Inpatient Discharge Database (LAHIDD) is based on the Health Care Financing Administration (HCFA) Uniform Billing UB-92 information. The LAC 48:V. Chapter 151, Section 15125 lists the required elements for LAHIDD submission.

Diagnoses and Procedures Classification

The diagnosis and procedures grouping methodology used in this report was generated using the Clinical Classifications Software (CCS) developed by the Agency for Healthcare Research and Quality (AHRQ). CCS aggregates the 4,290 procedures and the 15,298 diseases coded according to the International Classification of Diseases, 9th Revision, Clinical Modification (ICD-9-CM) into 260 clinically meaningful disease categories (ref: www.ahcpr.gov/data/hcup/ccsfact.htm).

LAHIDD also uses the Body System classification codes, which includes the following 18 groups of disease categories:

1. Infectious and Parasitic Diseases
2. Neoplasms
3. Endocrine, Nutritional, Metabolic and Immune Diseases
4. Diseases of the Blood and Blood-Forming Organs
5. Mental Disorders
6. Diseases of the Nervous System and Sense Organs
7. Diseases of the Circulatory System
8. Diseases of the Respiratory System
9. Diseases of the Digestive System
10. Diseases of the Genitourinary System
11. Complication of Pregnancy, Childbirth, and the Puerperium
12. Diseases of the Skin and Subcutaneous Tissue
13. Diseases of the Musculoskeletal System and Connective Tissue
14. Congenital Anomalies
15. Perinatal Conditions
16. Injury and Poisoning
17. Other Conditions
18. E Codes

When comparing 2003 and 2004, data consider the following:

- The number of reporting hospitals was 124 in the year 2003 and 161 in the year 2004.
- Types of hospitals reporting data are different for year 2003 and year 2004. (For instance, in 2003, 102 Acute Care hospitals reported to LAHIDD. In 2004, the number went up to 123). Similar changes are seen in other types of hospitals, e.g., Long-Term Care, Rehabilitation, Pediatric, and Psychiatric.

Hospital Inpatient Discharge Data



Glossary 2004

GLOSSARY

Some terms may not appear in this report.

Admit – A patient admitted to the provider for inpatient care or outpatient service

Admitting Diagnosis – The ICD-9-CM diagnosis code provided at the time of admission as stated by the physician

CHAMPUS – See TRICARE.

Co-morbidities – Coexisting medical problems that are listed as other diagnoses and are not directly related to the principal diagnosis.

Confidential Information – That information defined as confidential by this rule includes, but is not limited to:

- Employer identifiers, facility identifiers, patient or insured identifiers, payer identifiers, or physician or other service provider identifiers;
- Information identified by the identifiers;
- Combinations of data categories derived from part or all hospital discharge database information that would identify or tend to identify an employer, facility, patient or insured person, payer, or physician or other service provider; and
- Information referenced by combinations of these data categories.

Covered Benefit – A health service or item that is included in the health plan, and that is paid for either partially or fully.

Covered Charges – Services or benefits for which a health plan makes either partial or full payment.

Covered Days – The number of days covered by the primary payer, as qualified by the payer organization.

Custodial Care – Non-skilled, personal care, such as help with activities of daily living like bathing, dressing, eating, getting in and out of bed or chair, moving around, and using the bathroom. It may also include care that most people do themselves, like using eye drops.

Data Base – A structured repository of data, consisting of one or more related structured data tables.

Data Category – One of the typically (though not necessarily) non-unique data values of a data element, or to the equivalent labels for these values. For example, the data categories of the data element years may be three in number: "98", "99", "00", and may be labeled "1998", "1999" and "2000", whereas the data categories of the data element patient birth date may have thousands of possible values, some of which are probably uniquely associated with exactly one person.

Data Element – A logical field of a data record or a column of a data table, and includes both the named data elements in this rule, and any other data elements obtained or created by analytic or synthetic methods. Examples: Discharge year, age group, sex, and disease group.

Data Record – The row of a data table, or the set of related rows from related tables in a database.

Data Set – A structured subset of data from a database.

Discharge – A patient release from the hospital or move from one level of care to another. It may include moves from a hospital to a nursing home or to home care.

Discharge Date – Date that the patient was discharged from inpatient care.

External Cause of Injury (E-Code) – The ICD-9-CM code which describes the external cause of the injury, poisoning, or adverse effect.

Health Care Provider – A person who is trained and licensed to give health care. Also, a place licensed to give health care. Physicians, nurses, hospitals, skilled nursing facilities, some assisted living facilities, and certain kinds of home health agencies are examples of health care providers.

Health insurance – Insurance providing coverage of medical, surgical or hospital care in general or for which there is no specific heading.

Hospital – Any institution, place, building or agency, public or private, whether organized for profit or not-for-profit, which provides inpatient healthcare subject to licensure by the Louisiana Department of Health and Hospitals.

Hospital Discharge Information – All billing, medical, and personal information describing a patient, the services received, and charges billed, associated with a single inpatient hospital stay, including all elements of the Uniform Billing form, UB-92.

Hospital Discharge (Data) Record – The structured document, in paper or electronic form, of all the UB-92 data for a single hospital stay, or the data content of that document. This often will include more than one data record.

Hospital Stay or Inpatient Hospital Stay – The period, activities, events, and conditions associated with a patient, from the time of admission to a hospital, to the time of discharge from that hospital. Facilities licensed as hospitals and having different provider numbers are, for the purpose of this definition, distinct hospitals having discrete hospital stays and hospital discharges.

Insurance – Coverage by contract whereby one part indemnifies or guarantees another against loss by a specified contingency.

Intermediary – A data processing agent of a hospital, who is contracted or employed by that hospital to relay their hospital discharge records to the Office of Public Health in compliance with these rules.

Long-term Care – A "variety" of services that help people with health or personal needs and activities of daily living over a period of time. Long-term care can be provided at home, in the community, or in various types of facilities, including nursing homes and assisted living facilities. Most long-term care is custodial care.

Medicaid – A Federal-State health insurance program for certain low-income and needy people. It covers approximately 36 million individuals including children, the aged, blind, and/or disabled, and people who are eligible to receive federally assisted income maintenance payments.

Medicare – The federal health insurance program for people 65 years of age or older, certain younger people with disabilities, and people with End-Stage Renal Disease (permanent kidney failure with dialysis or a transplant, sometimes called ESRD).

No Charge – Medical service for which no payment is due. Example: Free, Charity, Special Research or Teaching.

Non-covered Days – Days of care not covered by the primary payer.

Other Diagnosis Codes – The ICD-9-CM diagnosis codes corresponding to an additional condition that co-exists at the time of admission or develops subsequently, and which have an effect on the treatment or the length of stay.

Patient – An individual awaiting or under medical care and treatment.

Patient or Insured Identifier – Patient name, insured's name, patient address or insured's address (specially including P.O. Box or street address, but not city, 5 digit Zip Code, or State), patient control number, Social Security Number, medical record number, health insurance claim identification number, or information that would identify or tend to identify an individual patient or insured person under whom the patient may be covered.

Payment Received – The amount the patient has paid to the provider for healthcare services.

Payor Identifier – The payor name, payor identification, insured group name, insured group number, or other information that could identify a payor.

Primary Payer – An insurance policy, plans, or programs that pay first on a claim for medical care. This could be Medicare or other health insurance. The patient provides this information at the time of admission.

Principal Diagnosis – The main medical reason for admission to the hospital.

Principal Diagnosis Code – The ICD-9-CM diagnosis code describing the principal diagnosis leading to the admission (or the condition established after study to be chiefly responsible for causing this hospitalization).

Private Insurer Provider – Insurer other than Medicaid, Medicare, TRICARE. Example: Blue Cross/Blue shield, HMO, Other Insurance Companies and the Self-Insured.

Procedure – A measure taken to remedy a health problem or to learn more about it. Surgery, diagnostic tests, and putting in an intravenous line are some examples.

Release – A conditional distribution of hospital discharges information for purposes authorized by the statute or its corresponding rules.

Secure Information – That information which is not subject to release by the Office Of Public Health or any other research panel for any purpose. Secure information includes patient and insured identifiers.

Submit – To deliver, or to cause to be delivered, to the Office Of Public Health, in the form and format specified, by the close of business on the prescribed date (with respect to a submission date, and data, report, surveys, statements or documents required to be submitted to the Louisiana Office of Public Health).

TRICARE (formerly called CHAMPUS) – The United State's government's health insurance program for members of the seven uniformed military services, including active duty members of the military, military retirees, and their eligible dependents.

Uncompensated Care – Medical services for which no payment is received. Uncompensated care includes charity care and bad debts.

Uninsured Patient – A patient who does not have any insurance. He/She will be ether self pay or be provided healthcare free of charge.

Workers Compensation – Insurance or Self insurance that employers are required to carry to cover the medical expenses and lost wages of employees who became ill or are injured at work.

SOURCE:

Louisiana Register, Vol. 24, No. 10, October 20, 1998
 Health care financing Administration (www.hcfa.gov/medicare.gov/glossary)
 Uniform Billing Training Manual UB-92, Addendum B, and Alphabetic listing of data elements, B1-B19.

a
b
38

UNIFORM BILL:**NOTICE: ANYONE WHO MISREPRESENTS OR FALSIFIES ESSENTIAL INFORMATION REQUESTED BY THIS FORM MAY UPON CONVICTION BE SUBJECT TO FINE AND IMPRISONMENT UNDER FEDERAL AND/OR STATE LAW.**

Certifications relevant to the Bill and Information Shown on the Face Hereof: Signatures on the face hereof incorporate the following certifications or verifications where pertinent to this Bill:

1. If third party benefits are indicated as being assigned or in participation status, on the face thereof, appropriate assignments by the insured/ beneficiary and signature of patient or parent or legal guardian covering authorization to release information are on file. Determinations as to the release of medical and financial information should be guided by the particular terms of the release forms that were executed by the patient or the patient's legal representative. The hospital agrees to save harmless, indemnify and defend any insurer who makes payment in reliance upon this certification, from and against any claim to the insurance proceeds when in fact no valid assignment of benefits to the hospital was made.
2. If patient occupied a private room or required private nursing for medical necessity, any required certifications are on file.
3. Physician's certifications and re-certifications, if required by contract or Federal regulations, are on file.
4. For Christian Science Sanitoriums, verifications and if necessary re-verifications of the patient's need for sanitorium services are on file.
5. Signature of patient or his/her representative on certifications, authorization to release information, and payment request, as required be Federal law and regulations (42 USC 1935f, 42 CFR 424.36, 10 USC 1071 thru 1086, 32 CFR 199) and, any other applicable contract regulations, is on file.
6. This claim, to the best of my knowledge, is correct and complete and is in conformance with the Civil Rights Act of 1964 as amended. Records adequately disclosing services will be maintained and necessary information will be furnished to such governmental agencies as required by applicable law.
7. For Medicare purposes:

If the patient has indicated that other health insurance or a state medical assistance agency will pay part of his/her medical expenses and he/she wants information about his/her claim released to them upon their request, necessary authorization is on file. The patient's signature on the provider's request to bill Medicare authorizes any holder of medical and non-medical information, including employment status, and whether the person has employer group health insurance, liability, no-fault, workers' compensation, or other insurance which is responsible to pay for the services for which this Medicare claim is made.

8. For Medicaid purposes:

This is to certify that the foregoing information is true, accurate, and complete.

I understand that payment and satisfaction of this claim will be from Federal and State funds, and that any false claims, statements, or documents, or concealment of a material fact, may be prosecuted under applicable Federal or State Laws.

9. For CHAMPUS purposes:

This is to certify that:

- (a) the information submitted as part of this claim is true, accurate and complete, and, the services shown on this form were medically indicated and necessary for the health of the patient;
- (b) the patient has represented that by a reported residential address outside a military treatment center catchment area he or she does not live within a catchment area of a U.S. military or U.S. Public Health Service medical facility, or if the patient resides within a catchment area of such a facility, a copy of a Non-Availability Statement (DD Form 1251) is on file, or the physician has certified to a medical emergency in any assistance where a copy of a Non-Availability Statement is not on file;
- (c) the patient or the patient's parent or guardian has responded directly to the provider's request to identify all health insurance coverages, and that all such coverages are identified on the face the claim except those that are exclusively supplemental payments to CHAMPUS-determined benefits;
- (d) the amount billed to CHAMPUS has been billed after all such coverages have been billed and paid, excluding Medicaid, and the amount billed to CHAMPUS is that remaining claimed against CHAMPUS benefits;
- (e) the beneficiary's cost share has not been waived by consent or failure to exercise generally accepted billing and collection efforts; and,
- (f) any hospital-based physician under contract, the cost of whose services are allocated in the charges included in this bill, is not an employee or member of the Uniformed Services. For purposes of this certification, an employee of the Uniformed Services is an employee, appointed in civil service (refer to 5 USC 2105), including part-time or intermittent but excluding contract surgeons or other personnel employed by the Uniformed Services through personal service contracts. Similarly, member of the Uniformed Services does not apply to reserve members of the Uniformed Services not on active duty.
- (g) based on the Consolidated Omnibus Budget Reconciliation Act of 1986, all providers participating in Medicare must also participate in CHAMPUS for inpatient hospital services provided pursuant to admissions to hospitals occurring on or after January 1, 1987.
- (h) if CHAMPUS benefits are to be paid in a participating status, I agree to submit this claim to the appropriate CHAMPUS claims processor as a participating provider. I agree to accept the CHAMPUS-determined reasonable charge as the total charge for the medical services or supplies listed on the claim form. I will accept the CHAMPUS-determined reasonable charge even if it is less than the billed amount, and also agree to accept the amount paid by CHAMPUS, combined with the cost-share amount and deductible amount, if any, paid by or on behalf of the patient as full payment for the listed medical services or supplies. I will make no attempt to collect from the patient (or his or her parent or guardian) amounts over the CHAMPUS-determined reasonable charge. CHAMPUS will make any benefits payable directly to me, if I submit this claim as a participating provider.

ESTIMATED CONTRACT BENEFITS



This public document was published at a total cost of \$3080.10. Three hundred copies of this document were printed for the Louisiana Department of Health and Hospitals by Louisiana State University Health Sciences Center, Auxiliary Enterprises, Duplicating and Graphics, 1900 Perdido, New Orleans, LA. This document was printed in accordance with standards for printing by State Agencies established pursuant to R.S.43:31.