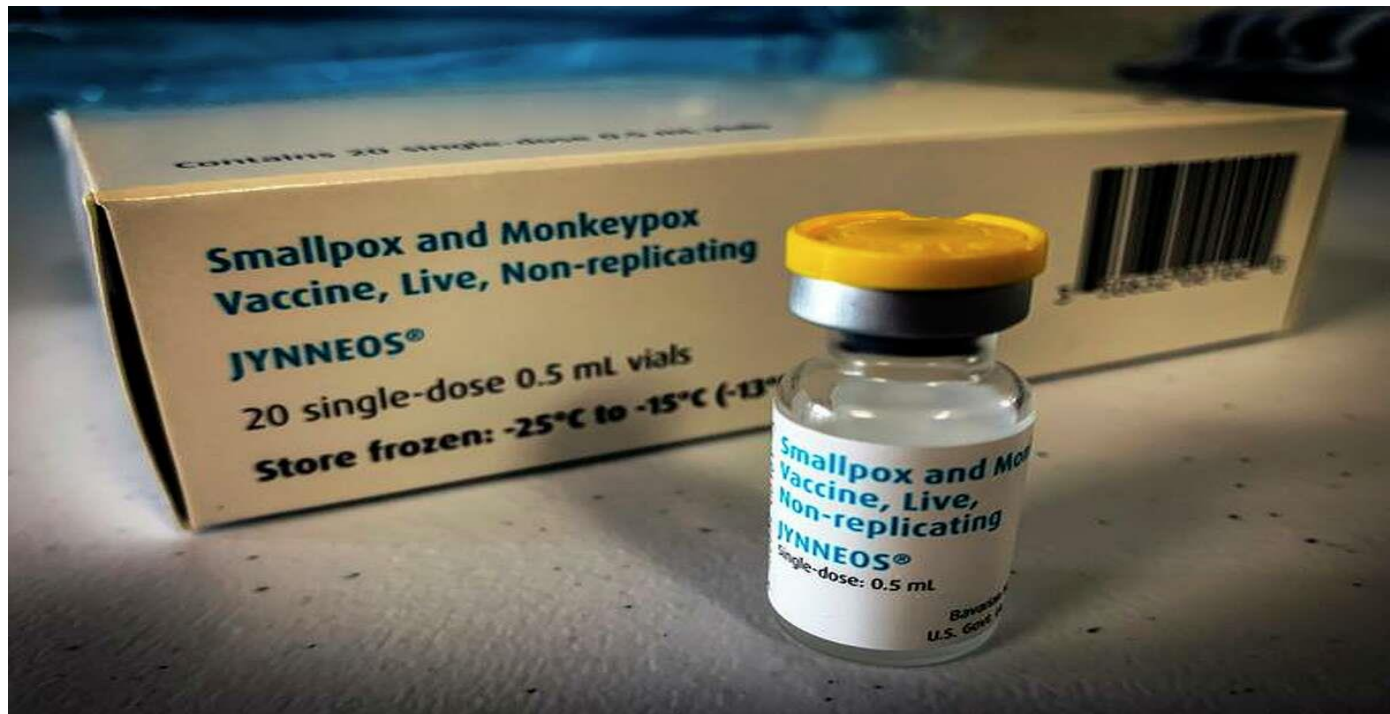


Immunization Program

JYNNEOS Updates

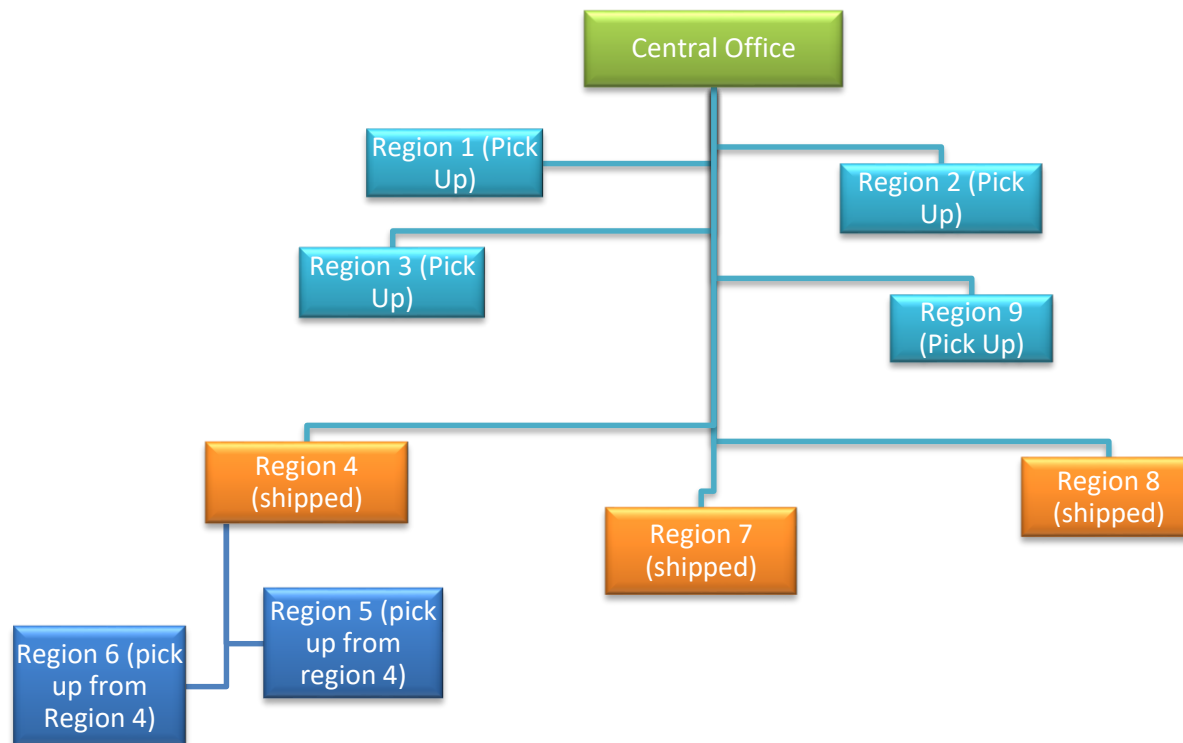


Regional Allocation

Regional allocations of JYNNEOS were:

- Determined by a workgroup of OPH clinical & Infectious Disease leadership
- Considered estimated population size of individuals at increased risk that may seek PEP or PEP++ services
- Future allocations may vary, based on case counts, demand and vaccine availability

Regional Distribution Plan



Storage and Handling

- Frozen vaccine should be maintained at temperatures between -25°C to -15°C (-13°F to +5°F).
- Frozen vaccine can be stored at appropriate temperatures up to expiration date.
- If unable to safeguard vaccine storage between -25°C to -15°C (-13°F to +5°F), refrigerate +2°C to +8°C (+36°F to +46°F).
- Vaccine can be held at refrigerated temperatures for up to 8 weeks.

Storage and Handling

- Vaccine must be held in appropriate freezer or refrigeration unit (no dormitory or bar type refrigerators or freezers).
- Providers must use a digital data logger thermometer (DDL) with a current and valid certificate of calibration.
- Do not use beyond the expiration date shown on the vial label, or Beyond Use Date (BUD).

Administration

- Each vial contains one dose of vaccine.
- JYNNEOS is administered through a two dose (0.5mL each) series 4 weeks apart.
- JYNNEOS is a milky, light yellow to pale white color.
- Providers should visually inspect all product before administration.

Quick Fact Sheet Preview



JYNNEOS Vaccine: Provider Update and Information

LAST UPDATED: July 15, 2022

General Information

JYNNEOS is a vaccine indicated for the prevention of smallpox and Monkeypox disease in adults 18 years of age and older determined to be at increased risk for smallpox or Monkeypox infection. Below you can find storage, handling, and administration information for the two dose JYNNEOS vaccination series.

Storage and Handling

- Once vaccine shipment is received/vaccine arrives, keep frozen at -25°C to -15°C (-13°F to +5°F) until the expiration date or it is ready to be used.
- Thawing should take 10 minutes or less at room temperature.
- Once thawed, the vaccine may be kept at +2°C to +8°C (+36°F to +46°F) for up to 8 weeks.
- Store in the original package to protect from light.
- Do not re-freeze a vial once it has been thawed or if it has been shipped at refrigerated temperatures (2°C to +8°C).
- Do not use the vaccine after the expiration date shown on the vial label or Beyond Use Date (BUD).

Preparation and Administration

JYNNEOS is administered through a two dose (0.5mL each) series, 4 weeks apart, through subcutaneous injection.

- Each vial contains one dose of the vaccine.
- Allow the vaccine to thaw and reach room temperature before use. Once thawed, the vaccine may be kept at +2°C to +8°C (+36°F to +46°F) for up to 8 weeks. Please be aware that this differs from the storage and use period of 12 hours once thawed that is found in the JYNNEOS package insert [Sections 2.2. Preparation and Administration and 16.2 Storage Conditions]. Do not refreeze.
- When thawed, JYNNEOS is a milky, light yellow to pale white colored suspension.
- Parenteral drug products should be inspected visually for particulate matter and discoloration prior to administration, whenever solution and container permit. If either of these conditions exists, the vaccine should not be administered.
- Providers administering JYNNEOS vaccines must use calibrated digital data logger (DDL) thermometers with a current and valid certificate of calibration issued by an appropriate entity.

Questions and More Information

CDC Virus Information Sheet: Find CDC's *What You Need to Know* about Monkeypox [here](#).

If you have any questions regarding Monkeypox or the JYNNEOS vaccine, please contact the Louisiana Immunization Program at la.immunization@la.gov.





LINKS

- MPX vaccine inventory and MPX vaccine administration will be closely monitored in LINKS.
- ALL MPX vaccinations that are administered must be entered into LINKS
- One-pager on how to add MPX vaccination in LINKS has been developed and shared on the MPX website
- JYNNEOS may not be in the Intergy EHR system (PHU)
- Vaccinia, smallpox, monkeypox vaccine live, PF (monkeypox)



LINKS

COVID-19, mRNA, LNP-S, PF, 10 mcg/0.2 mL dose, tris-sucrose (Pfizer Ped 5-11yo)		
COVID-19, mRNA, LNP-S, PF, 3 mcg/0.2 mL dose, tris-sucrose (Covid-19 (Pfizer-Maroon cap 6m-4y))		
COVID-19, mRNA, LNP-S, PF, pediatric 25 mcg/0.25 mL dose (Covid-19(Moderna 6m-5y))		
Pneumococcal conjugate PCV20, polysaccharide CRM197 conjugate, adjuvant, PF (PCV20)		
influenza, injectable, quadrivalent	07/12/2022	
Vaccinia, smallpox monkeypox vaccine live, PF ((monkeypox))		
--select--		

Add Administered

Clear

- If a combination vaccine is marked with a 'X', please verify which components of viewing the Vaccination Summary .



Adding Monkeypox Vaccine to Patient Records in LINKS

STEP ONE:

View the left column of LINKS Home page and click the **"Vaccinations"** tab then select **"View/Add"** (highlighted below).

- ▶ Main
- Dashboard
- ▶ Favorites
- ▶ Patient
 - Search/Add
 - Demographics
 - Remote Registry
 - Manage Population
- ▶ Vaccinations
 - View/Add
 - Forecast
 - Summary
 - Add Anonymous

STEP TWO:

Scroll down to the bottom list of Vaccine types on the “Vaccination View/Add” page until you find “**Vaccinia, smallpox monkeypox vaccine live, PF ((monkeypox))**” highlighted in the picture below.

Record the date in the blank box to the right of the vaccination and scroll to the very bottom left and click **"Add Administered"**.

[illegible]

STEP THREE:

Once you see the "Vaccination Detail Add" page, click "CLICK TO SELECT".

[illegible]

This will create a pop-up tab which shows the vaccine administered, the lot number, and amount of doses in your inventory.

Select Lot Number						
Select	Manufacturer	Lot Number	Facility	Funding Source	Expenditure Date	Order Date
				Available	Volume	
				Cancel	Clear	

Make sure to select the correct lot number. Selecting this lot number will subtract a dose from your inventory.

Lot Number Information will automatically fill in. Choose Vaccinator, Anatomical Site and Route, then click **SAVE**.

LA Immunization Program

